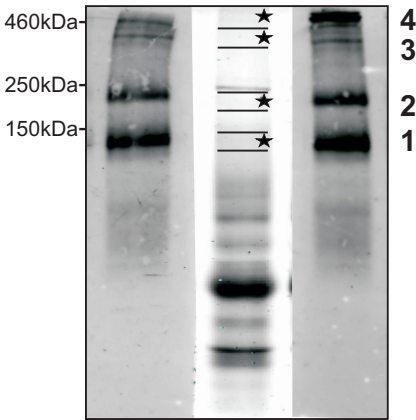


A



B

1 11 21 31 41 51
MPALWLGCCLCFSLLLPAARATSRREVCDNCGKSRQCFDRELHRQTGNNGFRCLNCNDNT
61 71 81 91 101 111
DGIHCECKNGFYRHRERDRCLPCNCSKGSLSARCDNSGRCSCKPGVTGARCDRCLPGF
121 131 141 151 161 171
HMLTDAGCTQDQRLDLSKCDPAGIAGPCDAGRCVCKPAVTGERCDRCRSGYYNLDGGN
181 191 201 211 221 231
PEGCTQCFYGHSSASCRSSAEYSVHKITSTFHQDVDGWKAVQRNGSPAKLQWSQRHQDVF
241 251 261 271 281 291
SSAQRLDPVYFVAPAKFLGNQQVSYGQSLSFYRVDVDRGGRHPSAHDVILEGAGLRITAPL
301 311 321 331 341 351
MPLGKTLPCGLTKTYTFRNLNEHPSNNWSPQLSYFEYRLLRNLTALRIRATYGEYSTGYI
361 371 381 391 401 411
DNVTLISARPVSGAPAPWVEQCICPVGYKGQFCQDCASGYKRDSARLGPFGTICIPNCQG
421 431 441 451 461 471
GGACDPDTGDCYSGDENPDIECADCPIGFYNDPHDPRCKPCPCHNGFSCSVMPEEEVV
481 491 501 511 521 531
CNNCPPGVTGARCELCADGYFGDPFGEHGVPVRPCQPCQCNNDVPSASGNCDRLTGRCLK
541 551 561 571 581 591
CIHNTAGIYCDQCKAGYFGDPLAPNPADKCRACNCNPMGSEFPVGRSDGTCVCKPGFGGP
601 611 621 631 641 651
NCEHGAFSPACYNQVKIQMDQFMQQLQRMELISKAQGGDGVVDPDTELEGRMQAEQAL
661 671 681 691 701 711
QDILRDAQISEGASRSLGLQAKVRSQENSYSQSRLLDDLKMTVERVRLGSAQYQNRVRDTH
721 731 741 751 761 771
RLITQMQLSLAEEASLGNTNIPASDHYVGPNGFKSLAQEATRLAESHVESANMEQLTR
781 791 801 811 821 831
ETEDYSKQALSLVRKALHEGVGSGSGSPDGAVVQGLVEKLEKTKSLAQQLTREATQAEIE
841 851 861 871 881 891
ADRSYQHSRLRLDSVSRLOQVSDQSFQVEEAKRIKQKADSLSSLVTRHMEFKRTQKNLG
901 911 921 931 941 951
NWKEEAQQLLQNGKSGREKSDQLLSRANLAKSRAQEALSMGNATFYEVESILKNLREFDL
961 971 981 991 1001 1011
QVDNRKAEAEAMKRLSYISQKVSASDKTQQAERALGSAADAQRAKNGAGEALEISSE
1021 1031 1041 1051 1061 1071
IEQEIGSLNLEANVTADGALAMEKGLASLKSEMREVEGELERKELEFDTNMDAVQMVITE
1081 1091 1101 1111
AQKVDTRAKNAGVTIQDTLNTLDGLLHLMGM