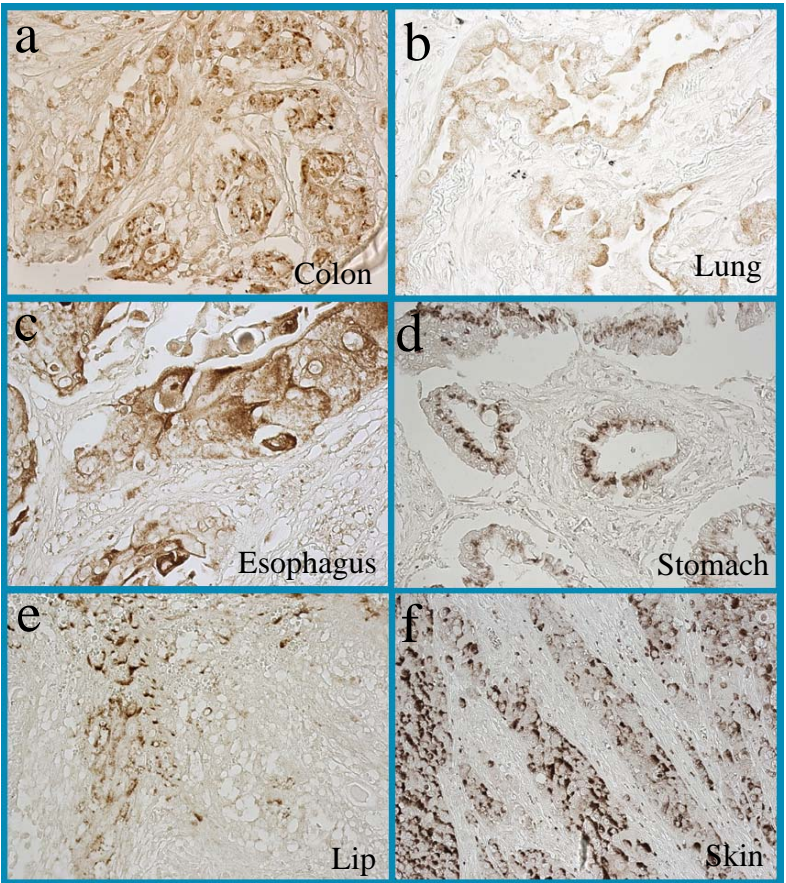


A



B

Types of cancer	VHZ +/-total samples	VHZ +%
Colon	25/143	17.5%
Lung	20/82	24.0%
*Squamous carcinoma	22/63	35.0%
Pancreas	17/51	33.3%
Brain	7/40	17.5%
Esophagus	4/12	33.3%
Stomach	5/14	35.7%
Bladder	2/6	33.3%
Kidney	2/11	18.1%
Skin	2/6	33.3%
Ovary	2/6	33.3%
Prostate	3/8	37.5%
Testis	2/6	33.3%