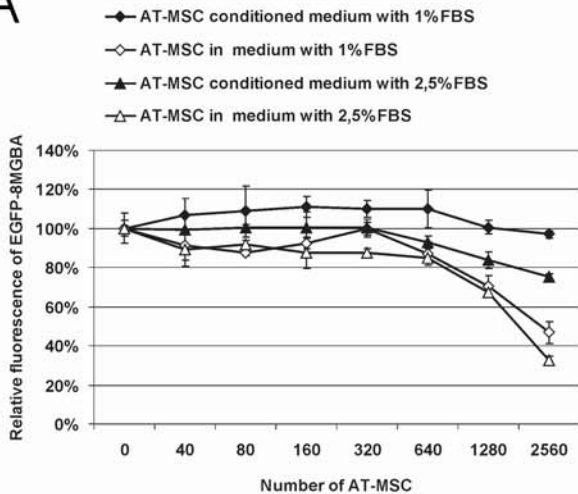


4,000 EGFP-8MGBA cells with:

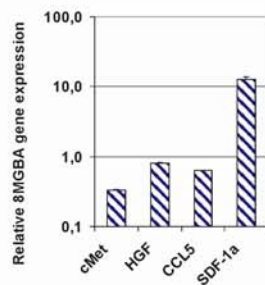
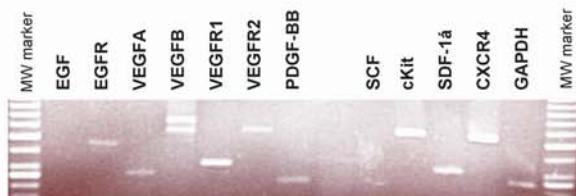
A



B

Tumor incidence		
Treatment	Day 35	Day 55
1.5E6 8MGBA s.c.	2/5	3/5
1E5 AT-MSC + 1.5E6 8MGBA s.c.	1/3	1/3
1E6 AT-MSC + 1.5E6 8MGBA s.c.	0/6	1/6
1E7 8MGBA s.c.	5/5	5/5
1E6 AT-MSC i.v.+ 1E7 8MGBA s.c.	3/8	3/8*

C



D

