

Additional file 8:

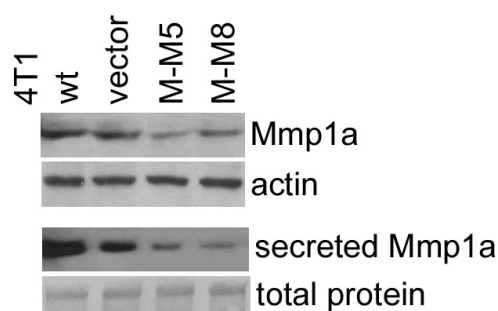


Figure S8a. c-Myb down-regulates interstitial collagenase Mmp1a in 4T1 cells. The control (wt, vector) and the MYBup (M-M5, M-M8) cell protein extracts were analyzed by immunoblotting. To control for sample loading, the blots were probed with a β -actin-specific antibody. The secretion of Mmp1a was determined in the cell-conditioned medium. The cells were cultured in a serum-free medium for 8 h, and the medium was harvested and concentrated using the Amicon Ultra centrifugal filter units. Equal amounts of total proteins were loaded.

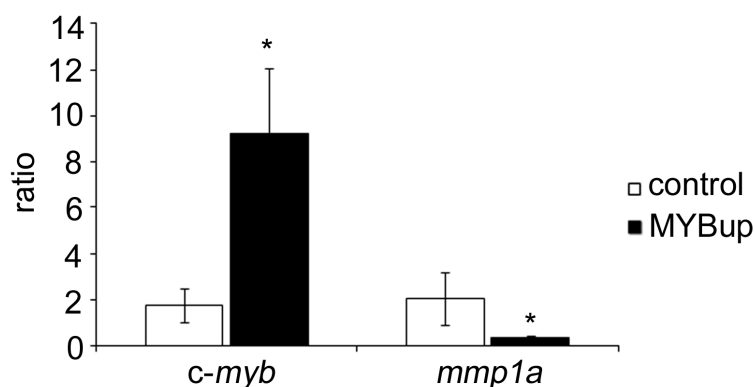


Figure S8b. Expression of *c-myb* and *mmp1a* mRNAs in 4T1 MYBup and control tumors. Total RNA was isolated from mouse mammary tumors. The relative amounts of *c-myb* and *mmp1a* mRNAs in the MYBup and control tumors were determined by qRT-PCR. *GAPDH* was used as an internal control. Asterisks indicate significant ($p < 0.05$) differences in the relative amounts of *c-myb* and *mmp1a* mRNAs in the control and MYBup tumors as determined by the *t*-test.