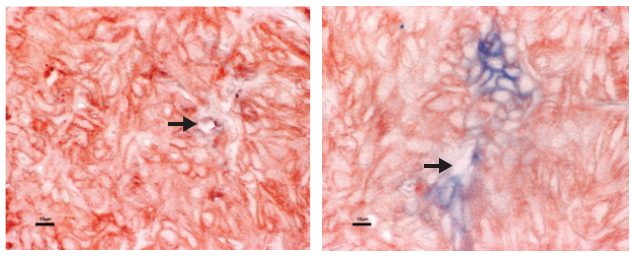


(A)

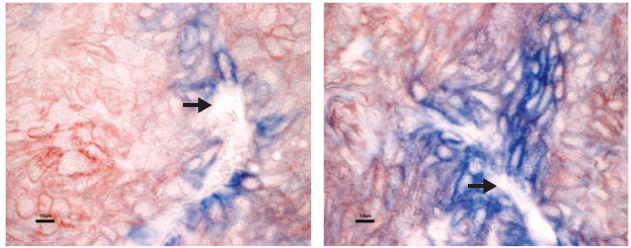


0 μg/mouse, 24 hours

20 μg/mouse, 24 hours

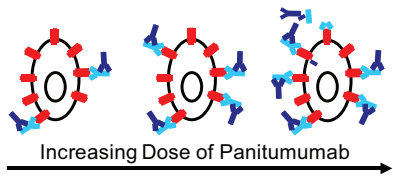
**Image Legend**  
 Red = EGFR staining  
 Light Blue = Panitumumab  
 Dark Blue = Anti-Idiotypic Ab

A431 tumor cell from control mouse

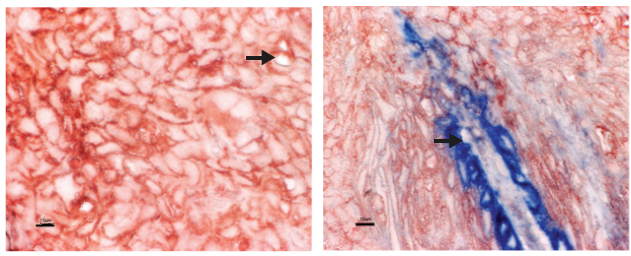


200 μg/mouse, 24 hours

500 μg/mouse, 24 hours



(B)

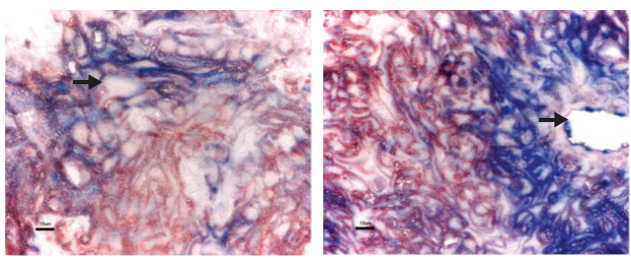


0 μg/mouse, 96 hours

20 μg/mouse, 96 hours

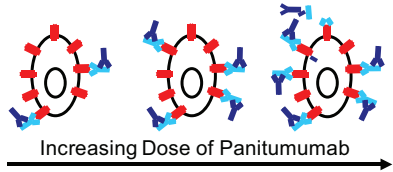
**Image Legend**  
 Red = EGFR staining  
 Light Blue = Panitumumab  
 Dark Blue = Anti-Idiotypic Ab

A431 tumor cell from control mouse



200 μg/mouse, 96 hours

500 μg/mouse, 96 hours



(C)

IHC Staining Intensity for Anti-Idiotypic Antibody in A431 Xenografts

