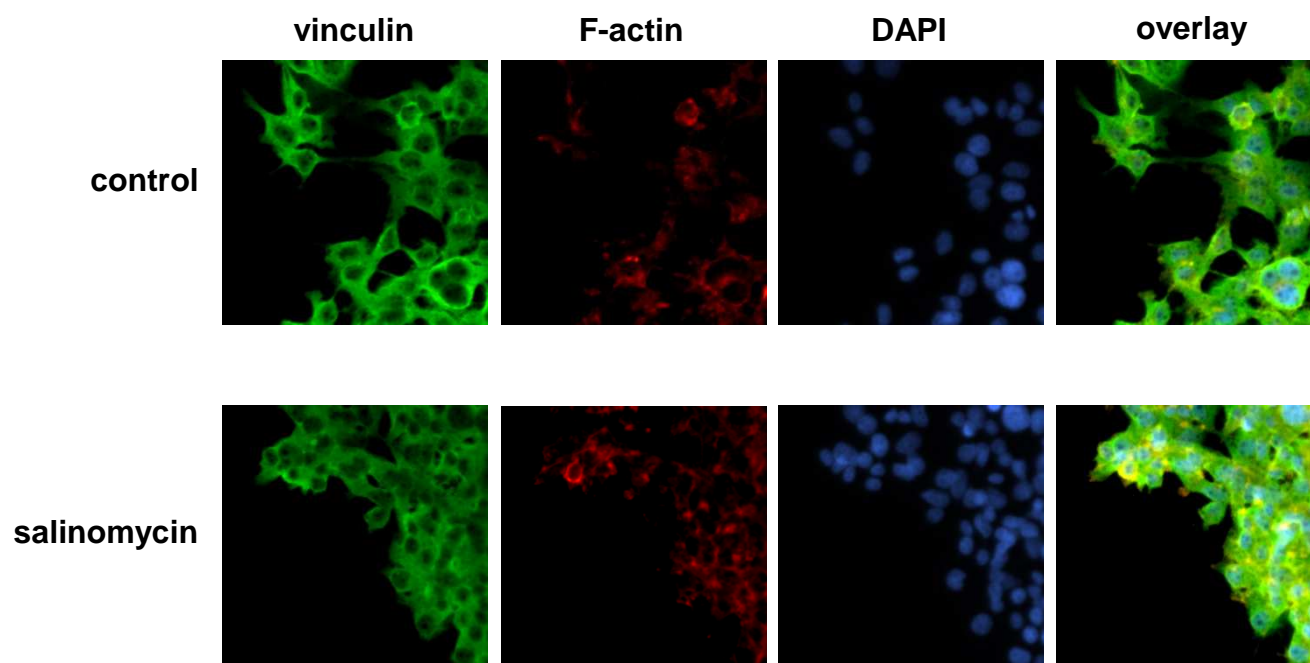


Supplement Figure S3)



Immunofluorescence microscopy of salinomycin-treated MDA-MB-436 cells. Cells were grown to a confluency of 80 – 90% and a scratch was placed. Subsequently, cells were treated with 500nM salinomycin for 24h and stained with anti-vinculin antibody (green), rhodamine phalloidin (F-actin, red) and DAPI (nuclei, blue). Representative pictures are shown.