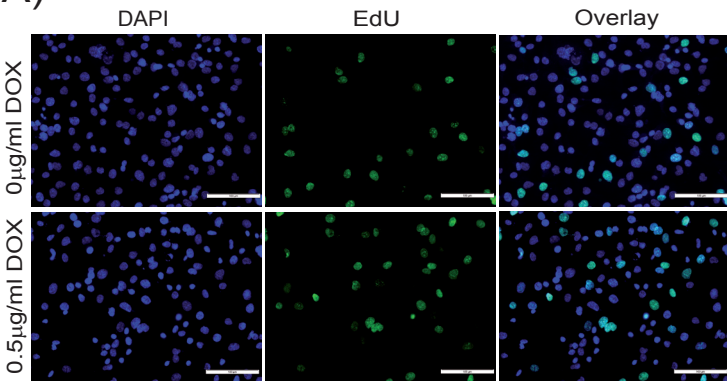
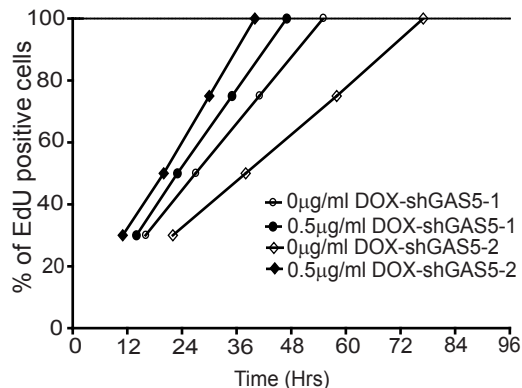


A)



B)



C)

Time in hours needed to label 30, 50, 75 & 100% of cells with EdU

% of EdU +	shGAS5-1		shGAS5-2	
	0ug/ml DOX	0.5ug/ml DOX	0 $\mu\text{g/ml}$ DOX	0.5ug/ml DOX
30	16	14	22	11
50	27	23	38	20
75	41	35	58	30
100	55	47	77	40