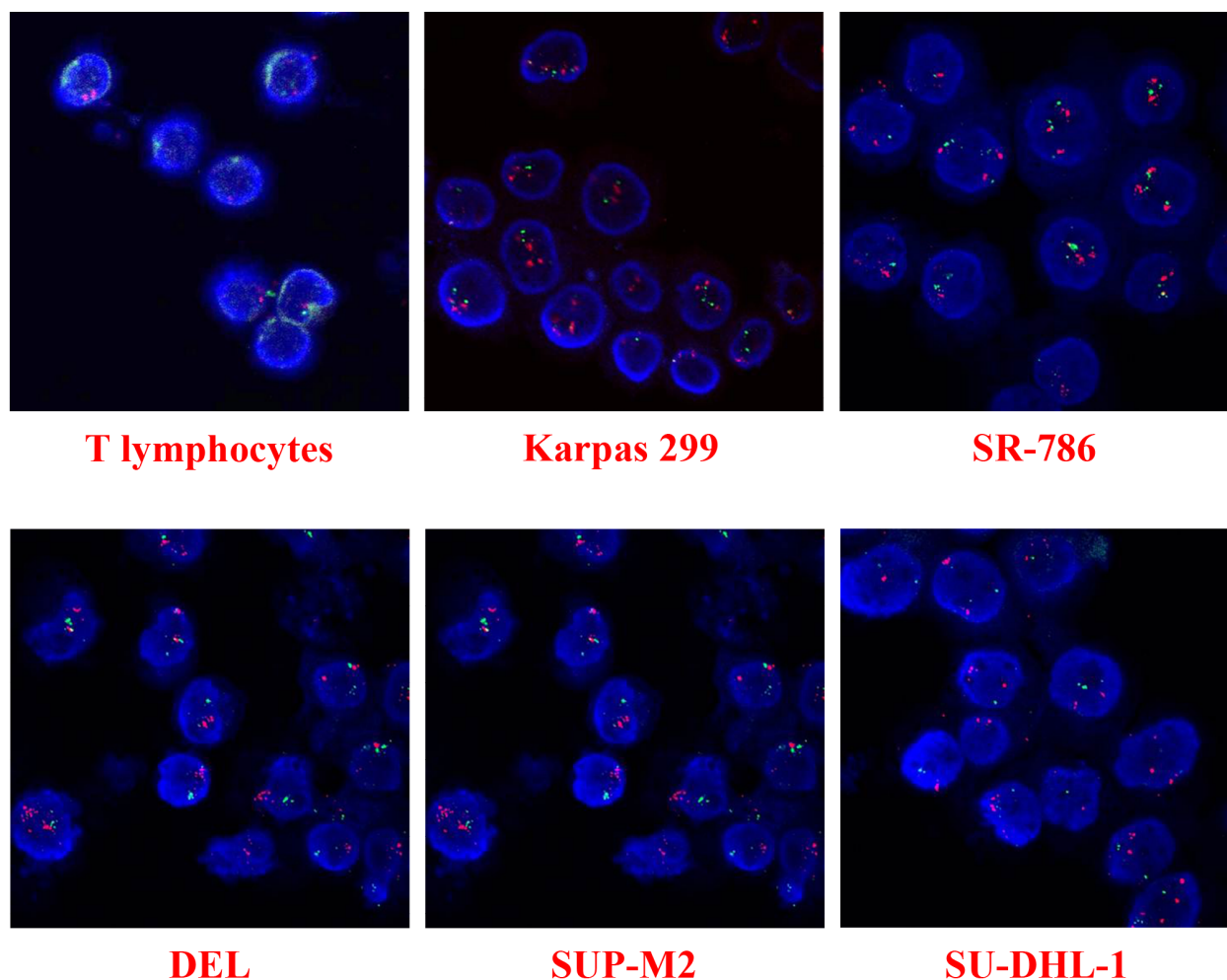


**SUPPORTING RESULTS**

**Figure 1-AF. FISH analysis of *IGF-IR* gene (red signal) and chromosome enumeration 15 (green signal; CEP15), which detects centromere 15, copy numbers in normal human T lymphocytes and NPM-ALK<sup>+</sup> T-cell lymphoma cell lines.**

FISH studies show no evidence to support amplification of *IGF-IR* gene in NPM-ALK<sup>+</sup> T-cell lymphoma cells. As shown in Table 1-AF, the *IGF-IR*-to-CEP15 ratio was consistently < 2.0 in the T lymphocytes as well as in the NPM-ALK<sup>+</sup> T-cell lymphoma cells.

**Table 1-AF. The average number of *IGF-IR* and CEP15 copies per cell as detected by FISH analysis.**

	<i>IGF-IR</i>	CEP15	<i>IGF-IR-to-CEP15 ratio</i>
<b>T lymphocytes</b>	1.51	1.53	0.99
<b>Karpas 299</b>	3.02	2.56	1.18
<b>SR-786</b>	4.18	3.89	1.07
<b>DEL</b>	4.44	4.44	1.00
<b>SUP-M2</b>	2.54	1.94	1.31
<b>SU-DHL-1</b>	2.65	2.13	1.24