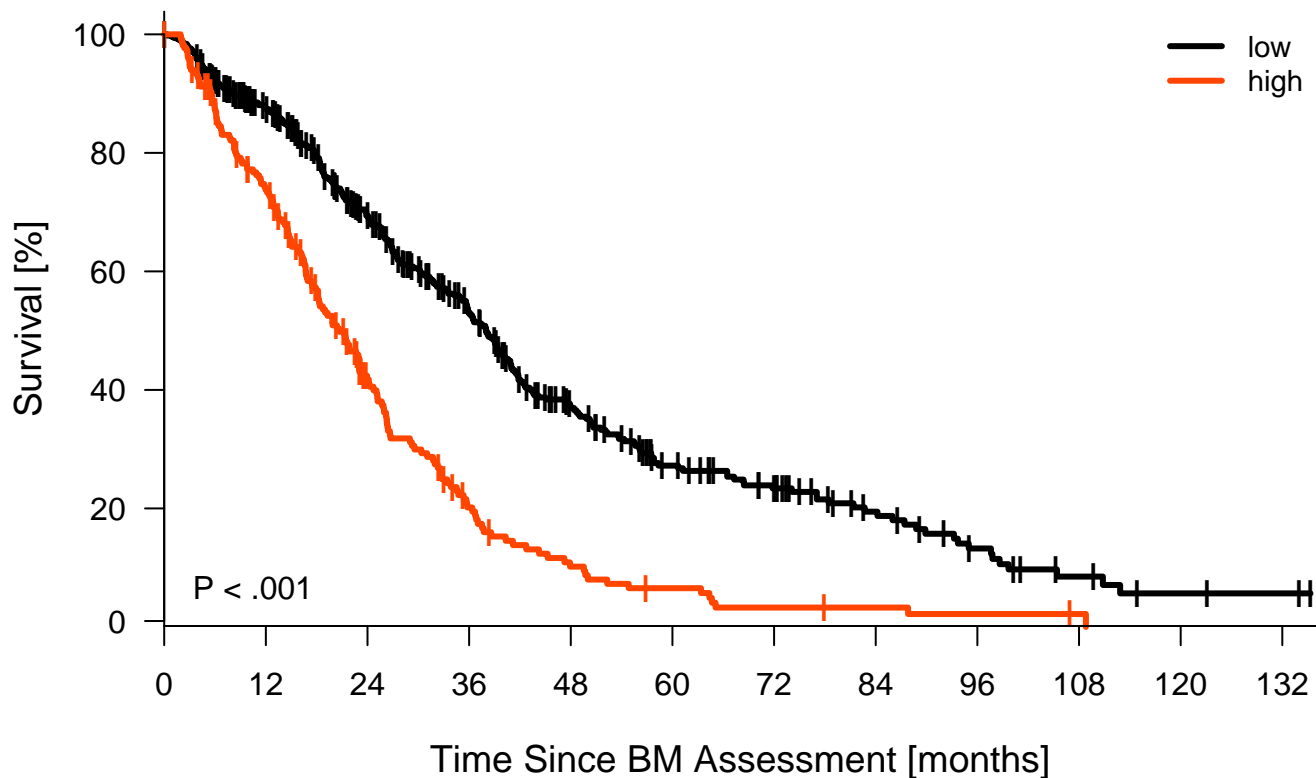


## **Figure Legends**

**Supplementary Figure 1.** Elevation of CHEK1 expression is significantly associated with poor outcome in both event free survival (A) and overall survival (B) in GEP database of GMMG-HD4 cohort.

**Supplementary Figure 2.** Illustration of the annotated genomic region of CHEK1, the putative different RNA splicing forms, and the validation strategy for circular exon 1 to 7 (circCHEK1).

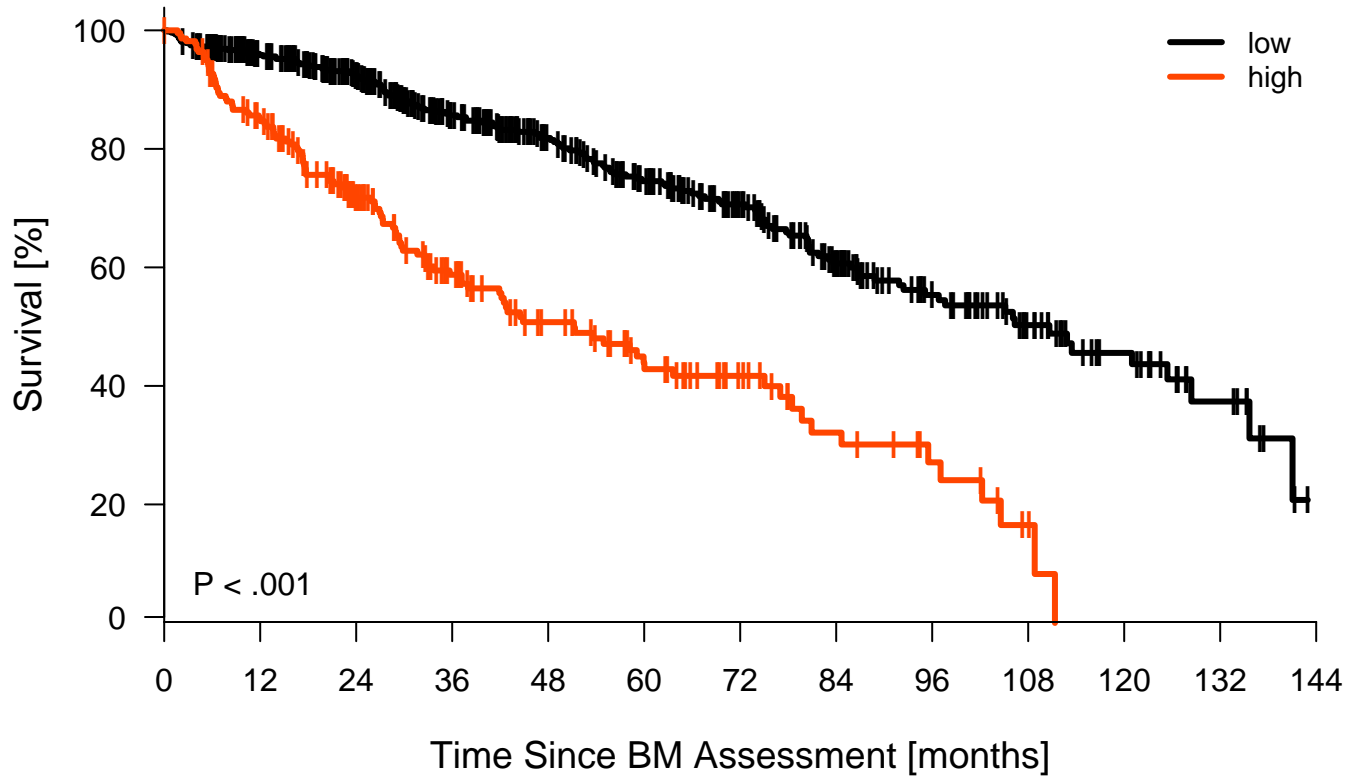
# ALL, EFS, MM, CHEK1 (205394\_at), maxstat cutoff = 6.4



502	386	266	175	102	62	45	27	15	7	3	2	low
217	149	67	29	14	8	4	3	2	1			high

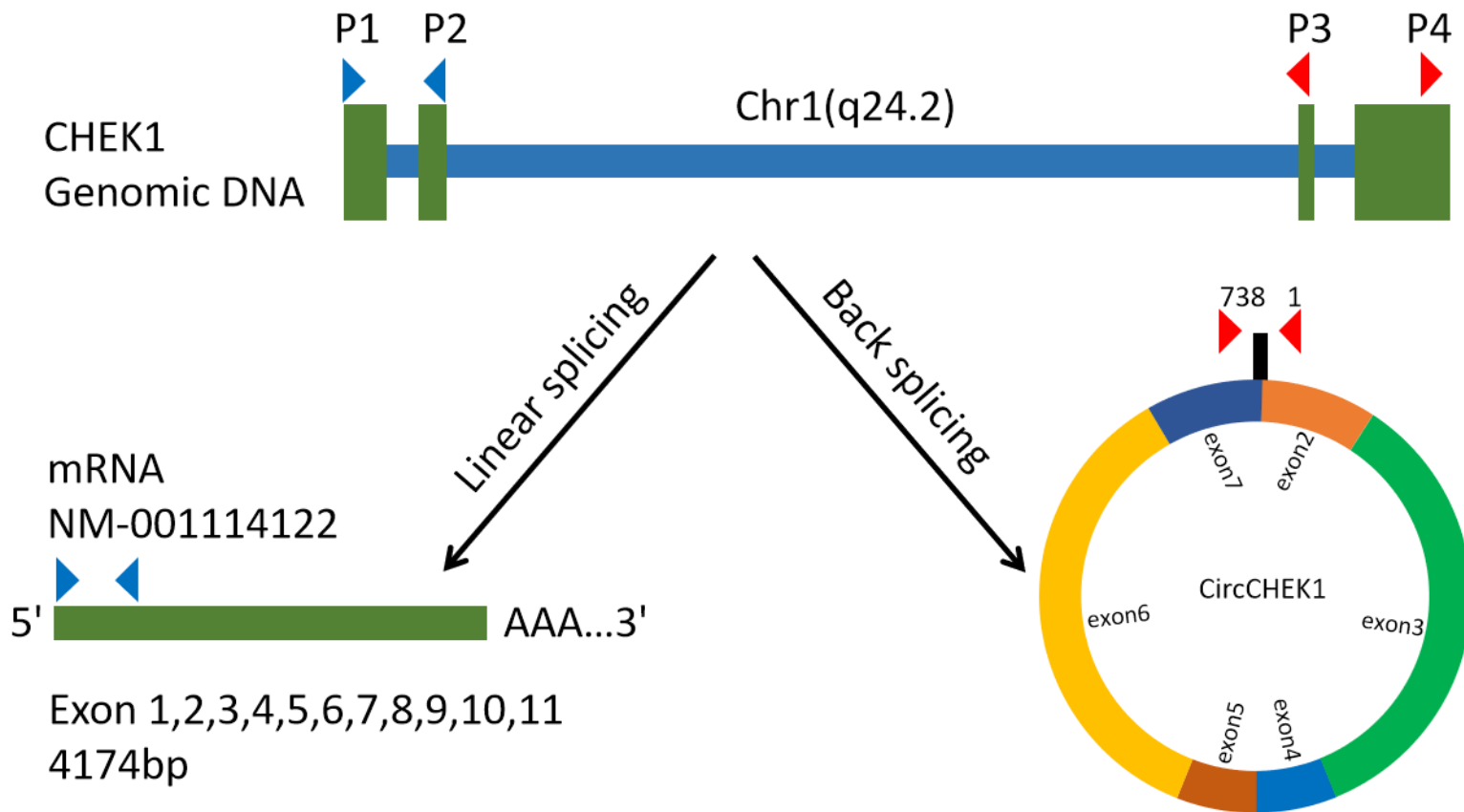
Supplementary Figure 1A

# ALL, OS, MM, CHEK1 (205394\_at), maxstat cutoff = 6.4



514	443	371	290	235	190	143	97	64	41	24	10	low
220	177	120	82	58	41	27	16	9	3			high

Supplementary Figure 1B



**Supplementary Figure 2**