

Patients at risk	$\geq 10$ mm	5-9 mm	1-4 mm	R1
	71	46	76	45
	28	18	18	11
	19	7	4	2
	7	1	1	0

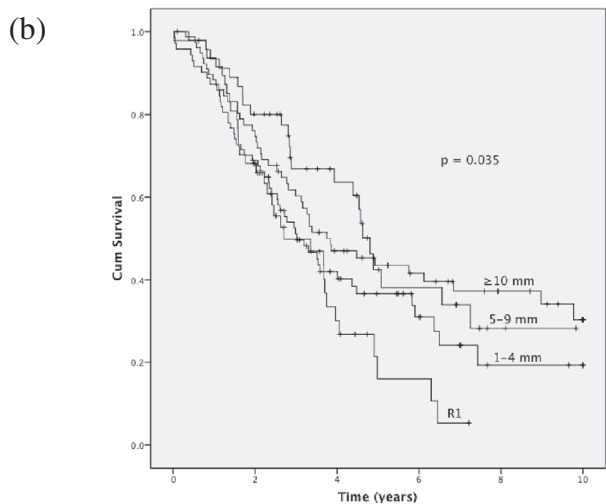
Note: Kaplan-Meier method and log-rank test:

1) R1 (A) vs. R0 (B-D):  $p = 0.127$ .

2)  $< 5$  mm (A and B) vs.  $\geq 5$  mm (C and D):  $p = 0.001$

3)  $< 10$  mm (A-C) vs.  $\geq 10$  mm (D):  $p = 0.020$

Date of recurrence was not retrieved in  $n = 4$  patients.



Patients at risk	$\geq 10$ mm	5-9 mm	1-4 mm	R1
	71	46	77	48
	53	35	52	30
	30	20	25	9
	21	11	10	3
	13	2	3	0
	7	0	2	0

Note: Kaplan-Meier method and log-rank test:

1) R1 (A) vs. R0 (B-D):  $p = 0.011$

2)  $< 5$  mm (A and B) vs.  $\geq 5$  mm (C and D):  $p = 0.008$

3)  $< 10$  mm (A-C) vs.  $\geq 10$  mm (D):  $p = 0.239$