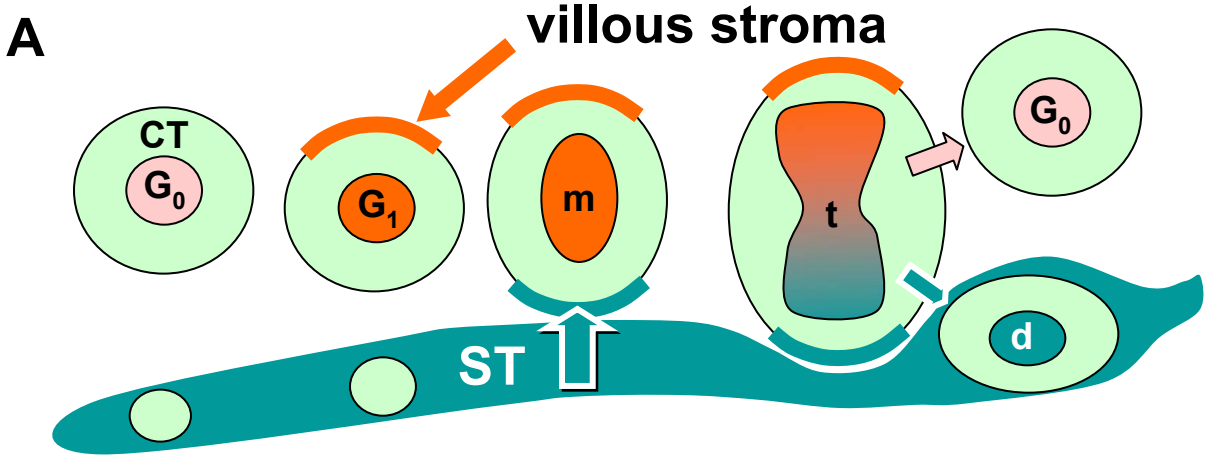
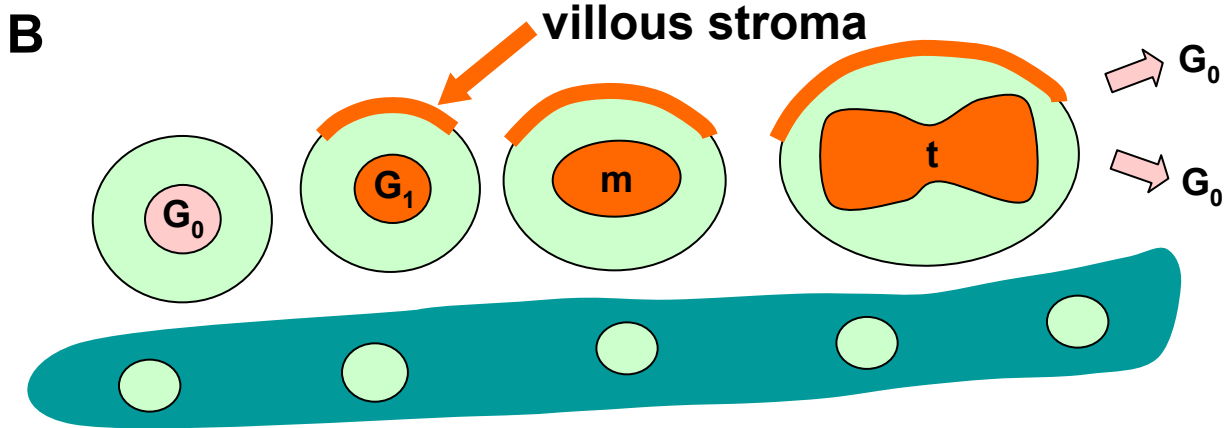


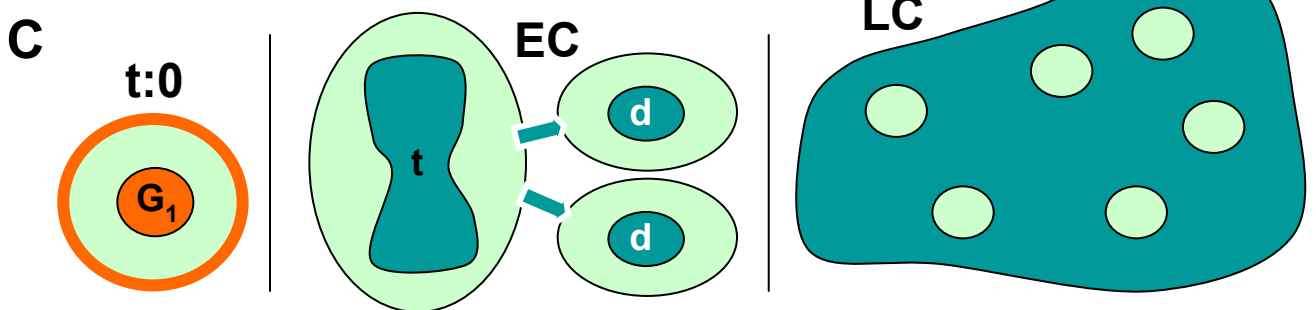
Asymmetric division (proliferation and differentiation) – stromal and ST signaling






Symmetric division resulting in proliferation - stromal signaling only



Symmetric division resulting in differentiation (cultured CT)



-  quiescence
-  proliferation-associated signaling and proteins (Notch; ER α)
-  differentiation-associated proteins (Numb; ER β ; p27)