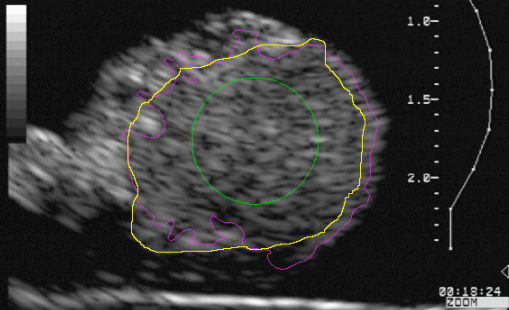


PT: COW 34L
ID:
RBRU-U OF S
C7 E5
LSPTRAD 13M10.7
LSPD8 C7 E5
HD1



02 JUL 93
11:37 AM

5

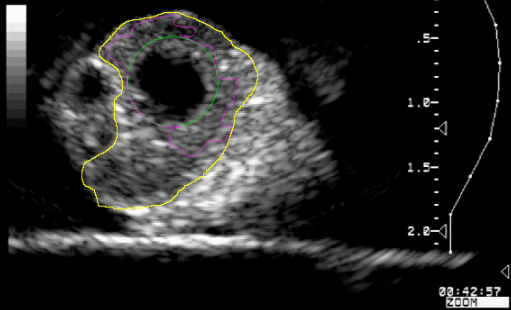


PT: COW 42 RO
ID:
RBRU-U OF S
C7 E5
LSPTRAD 13M10.7
LSPD8 C7 E5
HD1



13 MAY 93
2:22 PM

6

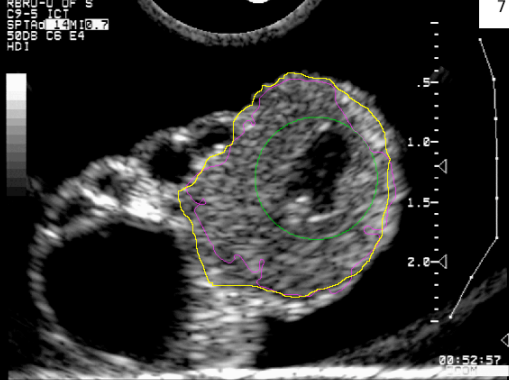


PT: COW 68L
ID:
RBRU-U OF S
C7 E5
LSPTRAD 13M10.7
LSPD8 C7 E5
HD1



17 MAY 93
10:15 AM

7



PT: COW 71R
ID:
RBRU-U OF S
C7 E5
LSPTRAD 13M10.7
LSPD8 C7 E5
HD1



28 JUN 93
1:47 PM

8

