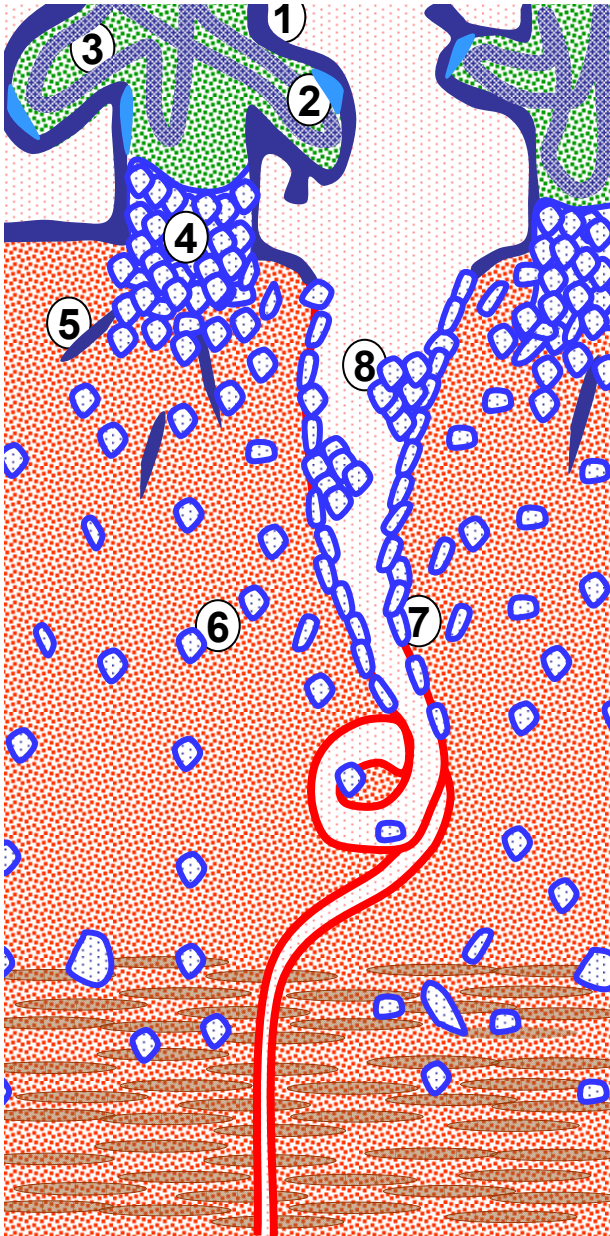


Human



(1) Villous STB / Labyrinthine STB

COX, eNOS, KAL/B2R, ANG-(1-7), ACE2, VEGF/KDR

(2) Villous CTB / Labyrinthine CTB

COX, eNOS, B2R, ANG-(1-7), ACE2, VEGF/KDR, KAL

(3) Fetoplacental endothelium

COX, eNOS, KAL/B2R, ANG-(1-7), ACE2, VEGF/KDR

(4) Cell columns / Subplacental CTB

eNOS, ANG-(1-7), ACE2, VEGF/KDR, KAL, B2R

(5) Invasive STB / Syncytial streamers

eNOS, KAL/B2R, ANG-(1-7), ACE2, VEGF/KDR →

(6) Interstitial (invasive extravillous) TB

← COX, eNOS, KAL/B2R, ANG-(1-7), ACE2, VEGF/KDR

(7) Intramural (invasive) TB

eNOS, KAL/B2R, ANG-(1-7), ACE2, VEGF/KDR →

(8) Intraarterial (invasive) TB

COX, KAL/B2R, ANG-(1-7), ACE2, VEGF/KDR, eNOS

(9) Perivascular (invasive) TB

eNOS, KAL/B2R, ANG-(1-7), ACE2, VEGF/KDR →

Guinea pig

