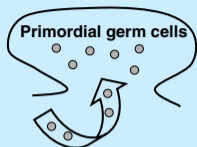
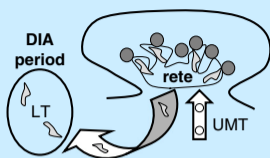
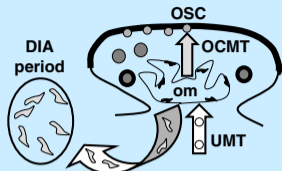
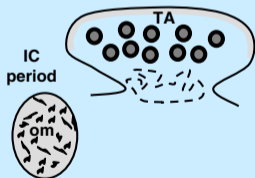
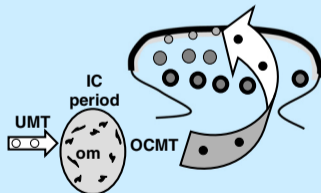
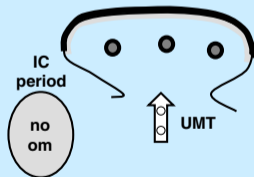




A Indifferent gonad**B** Embryonic oocytes
(direct influence of rete ovarii)**C** Fetal oocytes
(hormonal signaling + OCMT)**D** Perinatal phase & childhood
(OCMT signaling only)**E** Adult ovary
(hormonal signaling + OCMT)**F** Aging ovary
(hormonal signaling only)

○ = germ cells

● = oocytes

● = primary follicles

 = "veiled" MDC
(memory builders)

 = memory keepers

○ = uncommitted MDC & T Cells (UMT)

● = ovary-committed MDC & T cells (OCMT)