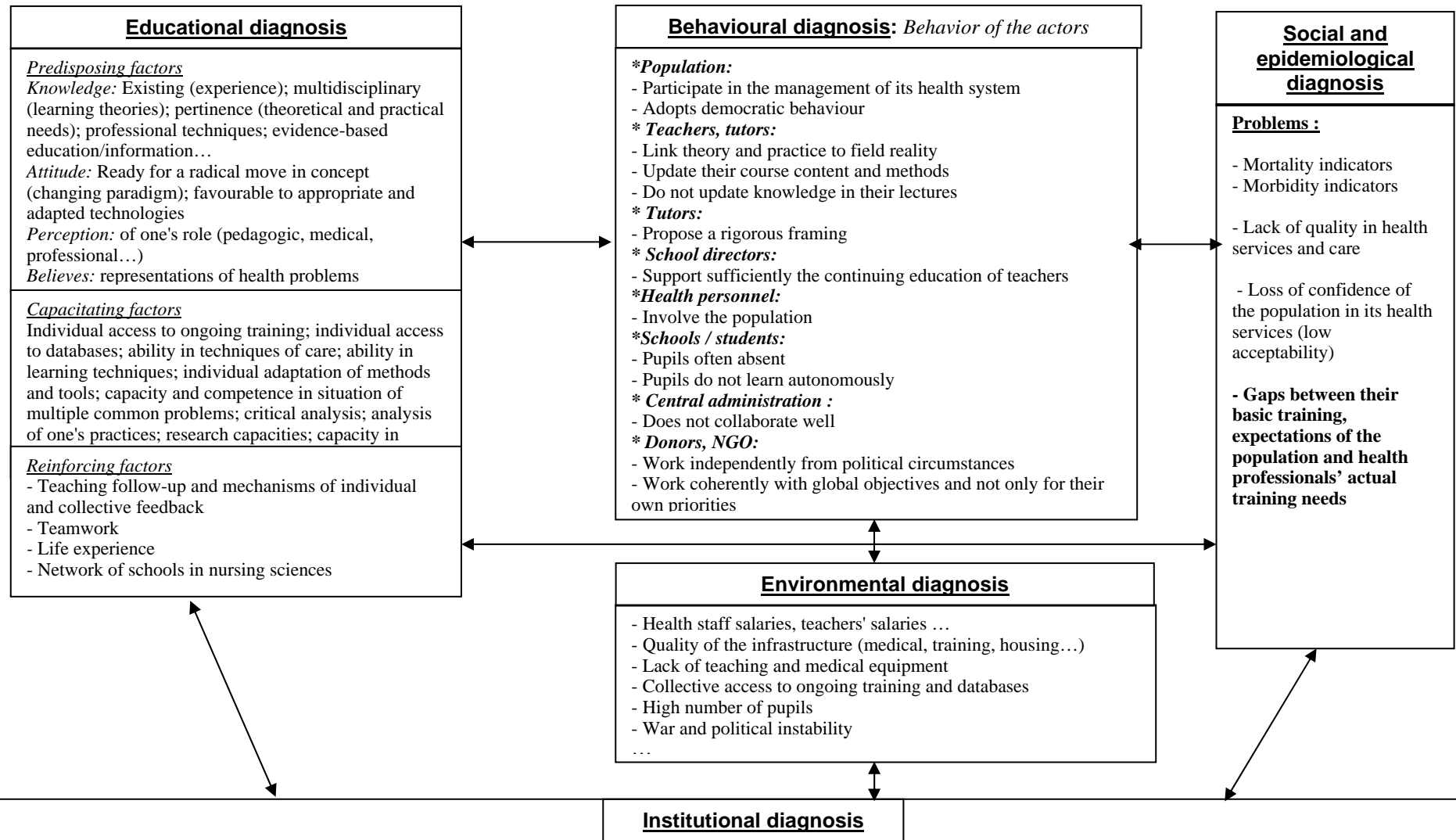


Table 1. PRECEDE model for health science teaching in the DRC



School project – Percentage of budget assigned to health – Strategic orientations of the health policy and operational planning – Coherence of programs and evaluation with the expected capacities of human resources – Existing legal body, such as a nursing council, to ensure quality control – Institutional transparency between professionals: doctors, nurses, teachers – Norms coherent with the expected change – Career scheme in relation to job descriptions and required qualifications – Existing mechanisms for intersectorality or multidisciplinary approach – Lack of data bases on human resources