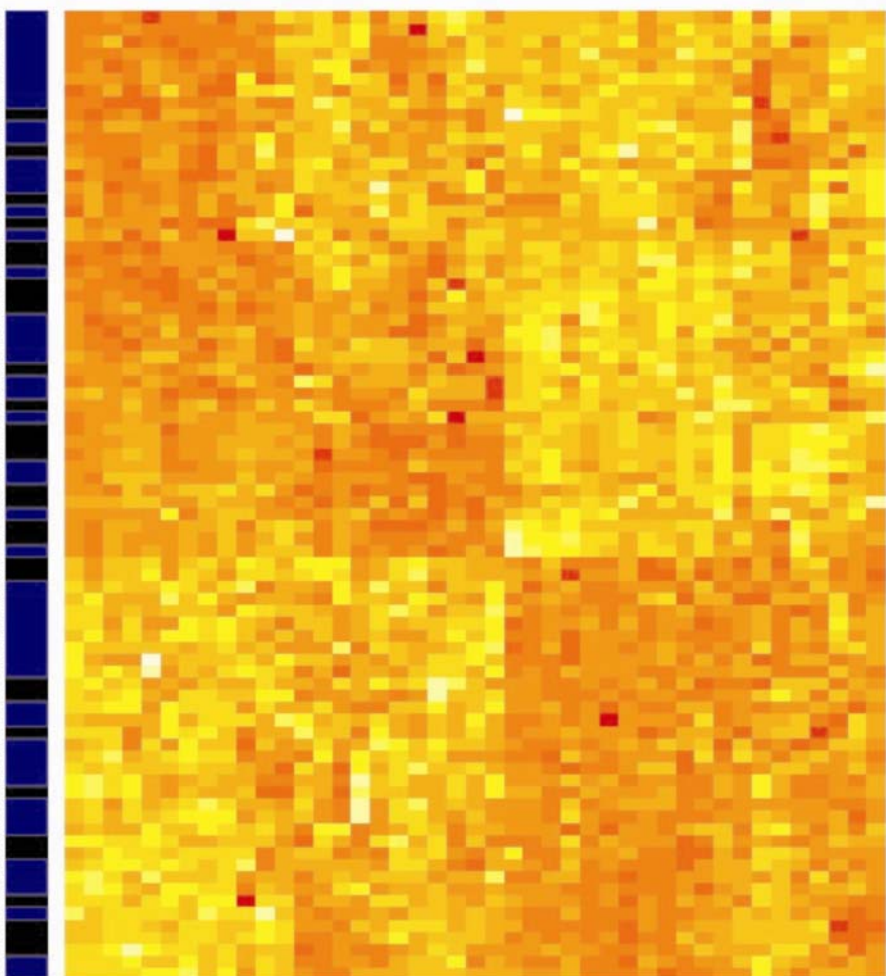
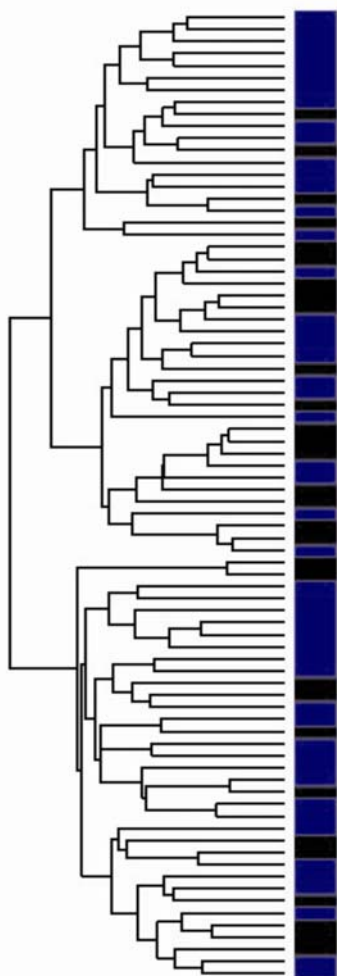
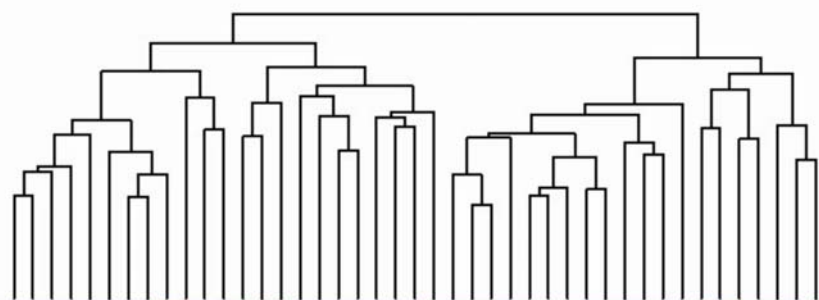


Shorter Survival | Longer Survival



Genes

0.54
0.85
0.70
0.61
0.34
1.84
1.05
0.65
2.95
2.41
0.58
0.69
0.28
1.42
0.10
1.02
1.29
0.47
0.05
0.30
1.07
1.02
2.51
2.38
4.10
6.21
5.81
1.63
2.20
2.97
1.66
5.45
1.67
2.22
1.06
4.88
2.23
1.51

Martingale residuals