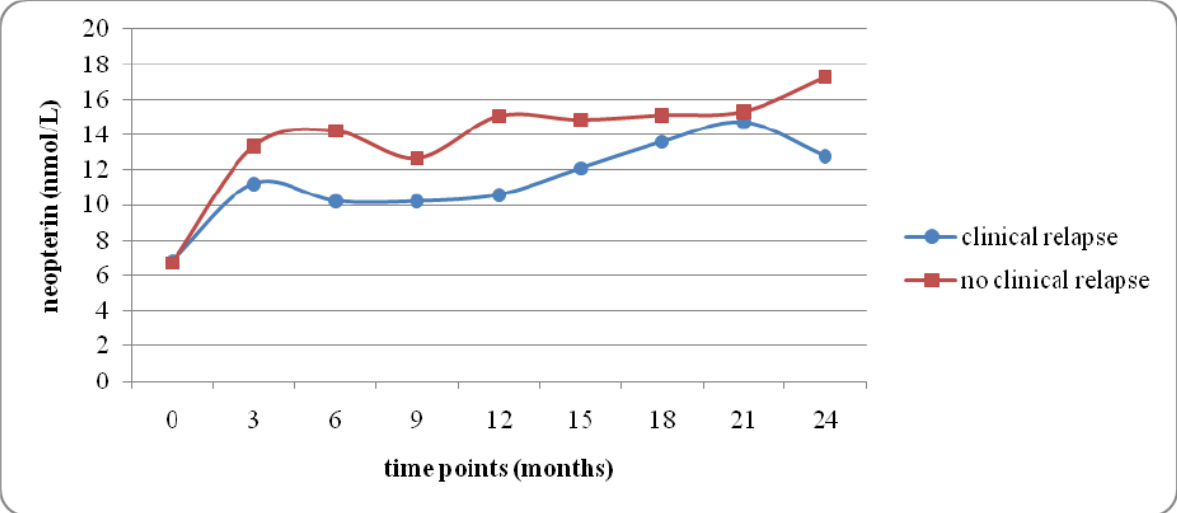
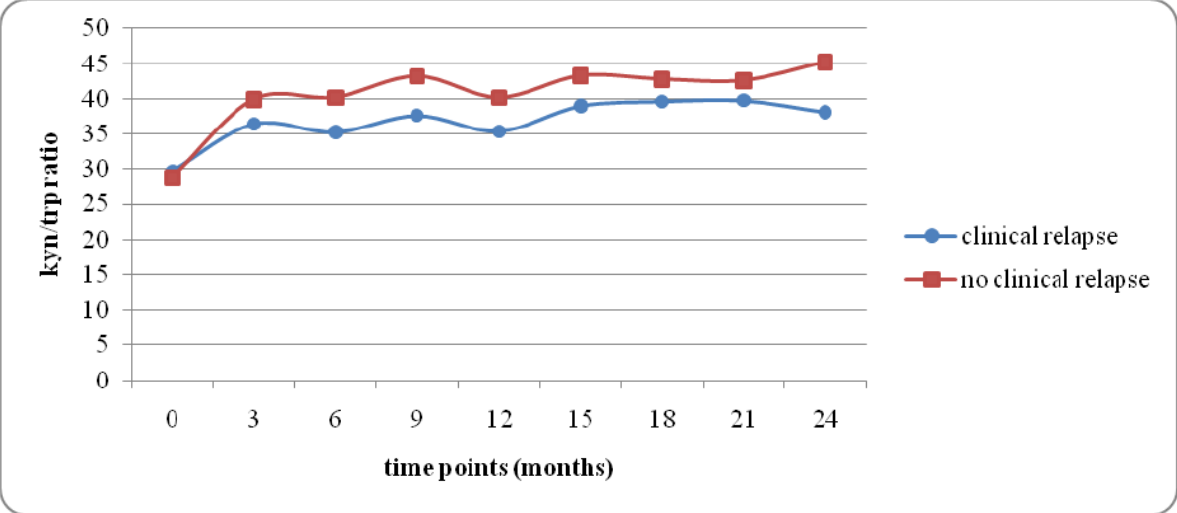


**FIGURE 4A: correlation between neopterin levels and clinical relapses**



**FIGURE 4B: correlation between kyn/tp ratio and clinical relapses**



**Figure 4 (A and B):** No significant correlation was found between neopterin levels (A) or kyn/tp ratio (B) and the onset of clinical relapses at any of the examined time points. The presence of clinical relapses consisted of the onset of at least one relapse during the treatment period (TP).