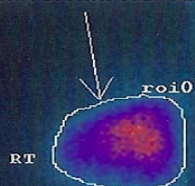


99mTc-HMPAO-ADScells



A

30MIN
ANTERIOR

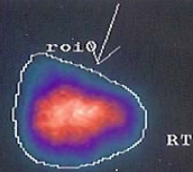
99mTcO4-ADScells



B

aver. count: 93.69

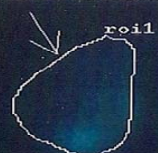
99mTc-HMPAO-ADScells



30MIN
POSTERIOR

aver. count: 334.65

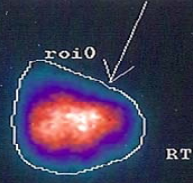
99mTcO4-ADScells



D

aver. count: 37.89

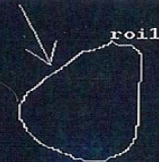
99mTc-HMPAO-ADScells



90MIN
POSTERIOR

aver. count: 227.24

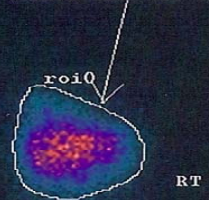
99mTcO4-ADScells



F

aver. count: 1.22

99mTc-HMPAO-ADScells



24HOURS
POSTERIOR

aver. count: 14.76

C

90MIN
ANTERIOR

30MIN
ANTERIOR

STOMACH

E

24HOURS
ANTERIOR

STOMACH