

Good Pathological Responders (Groups I and II)

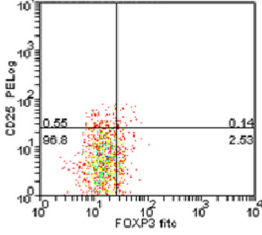
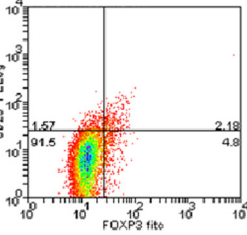
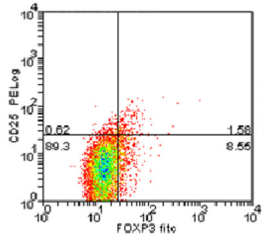
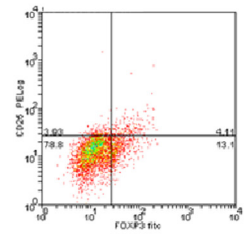
% of Tregs (CD4⁺CD25⁺ CD127⁻ FOXP3⁺)

Baseline
(4.1%)

Post-chemotherapy
(1.50%)

Post-surgery
(2.10%)

Healthy Donors
(0.14%)



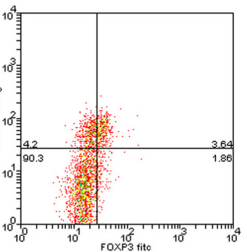
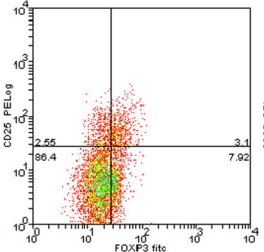
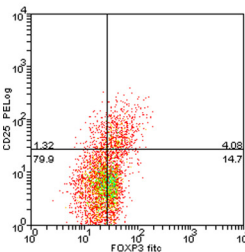
Poor Pathological Responders (Groups III and IV)

% of Tregs (CD4⁺CD25⁺ CD127⁻ FOXP3⁺)

Baseline
(4.08%)

Post-chemotherapy
(3.1%)

Post-surgery
(3.64%)



Good Pathological Responders (Groups I and II)

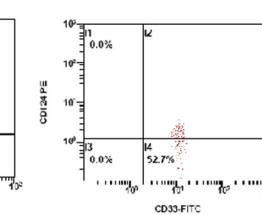
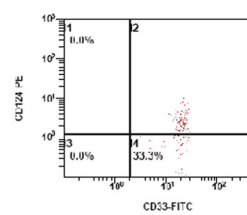
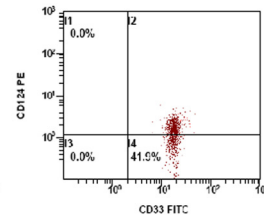
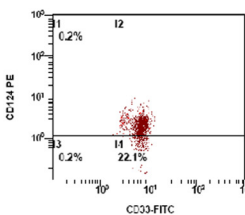
AbNs of Monocytic (CD11b⁺ CD14⁺ HLA DR⁻ CD124⁺ CD33⁺) MDSC

Baseline
(42 cells/ul)

Post-chemotherapy
(21 cells/ul)

Post-surgery
(10 cells/ul)

Healthy Donors
(8 cells/ul)



Good Pathological Responders (Groups I and II)

AbNs of Granulocytic (CD11b⁺ CD14⁻ CD66b⁺ CD124⁺ CD15⁺) MDSCs

Baseline
(150 cells/ul)

Post-chemotherapy
(80 cells/ul)

Post-surgery
(60 cells/ul)

Healthy Donors
(85 cells/ul)

