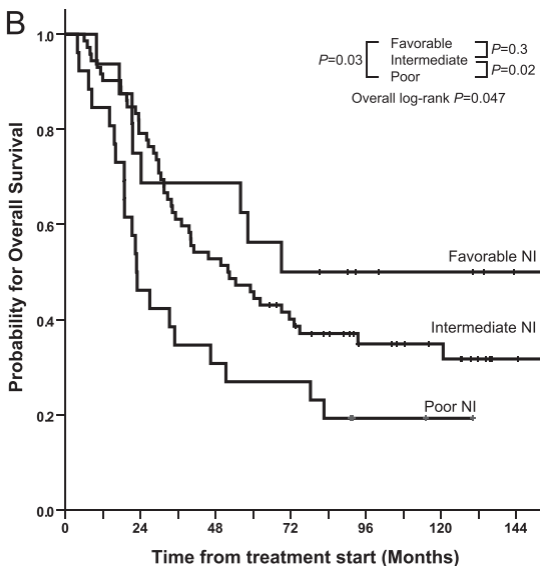


No. at risk

Favorable	21	15	9	8	7	6	5	1
Intermediate	65	36	19	13	8	4	2	1
Poor	25	8	3	2	2	2	0	0



No. at risk

Favorable	16	12	11	8	5	4	1
Intermediate	72	57	38	27	15	11	3
Poor	26	12	8	7	2	1	0