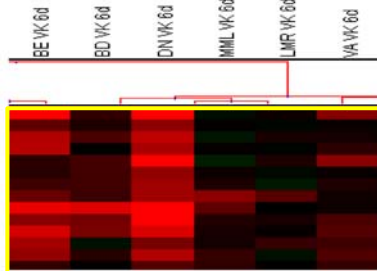
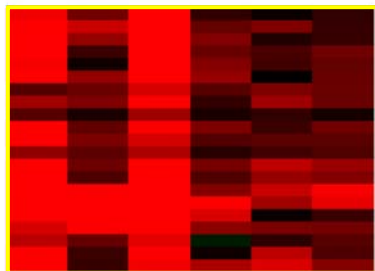


A



LILRA3; leukocyte immunoglobulin-like receptor, subfamily A (without TM domain), member 3
 CD82; CD82 molecule
 CXCL13; chemokine (C-X-C motif) ligand 13
 SLC7A11; solute carrier family 7, (cationic amino acid transporter, y+ system) member 11
 CRLF2; cytokine receptor-like factor 2
 NA; NA
 TRAF3IP2; TRAF3 interacting protein 2
 NA; NA
 C19orf59; chromosome 19 open reading frame 59
 PDPN; podoplanin
 S100A9; S100 calcium binding protein A9
 SERPINA1; serpin peptidase inhibitor, clade A (alpha-1 antiproteinase, antitrypsin), member 1
 LILRB2; leukocyte immunoglobulin-like receptor, subfamily B (with TM and ITIM domains), member 2
 LILRB1; leukocyte immunoglobulin-like receptor, subfamily B (with TM and ITIM domains), member 1

B



LILRA5; leukocyte immunoglobulin-like receptor, subfamily A (with TM domain), member 5
 CA12; carbonic anhydrase XII
 PI3D1; phosphotyrosine interaction domain containing 1
 CD300E; CD300e molecule
 NA; NA
 FCAR; Fc fragment of IgA, receptor for
 GLTD1; glycosyltransferase 1 domain containing 1
 FPR1; formyl peptide receptor 1
 DSE; dermatan sulfate epimerase
 LILRA1; leukocyte immunoglobulin-like receptor, subfamily A (with TM domain), member 1
 CLEC4D; C-type lectin domain family 4, member D
 KREMEN1; kringe containing transmembrane protein 1
 TNIP3; TNFAIP3 interacting protein 3
 KCNJ15; potassium inwardly-rectifying channel, subfamily J, member 15
 THBS1; thrombospondin 1
 VCAN; versican
 SLC11A1; solute carrier family 11 (proton-coupled divalent metal ion transporters), member 1
 ITGB8; integrin, beta 8
 LILRA6; leukocyte immunoglobulin-like receptor, subfamily A (with TM domain), member 6
 FPR2; formyl peptide receptor 2
 CCR2; chemokine (C-C motif) receptor 2