

Supplemental Figure 1

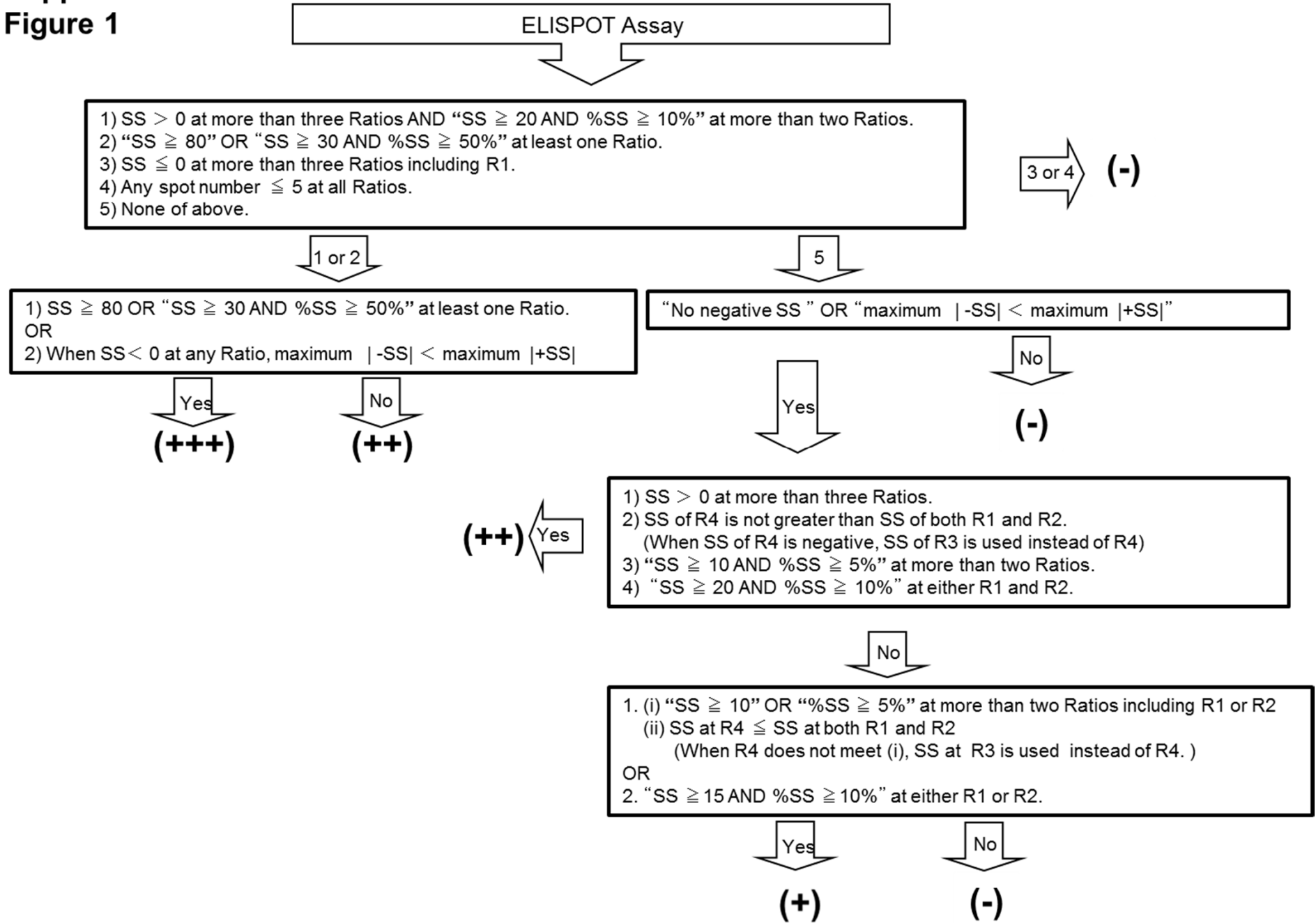


Figure S1. Positivity of antigen-specific T cell response was quantitatively defined according to the evaluation tree algorithm. In brief, the peptide-specific spots (SS) were the average of triplicates by subtracting the HIV peptide-pulsed stimulator well from the immunized peptide-pulsed stimulator well. The %SS means the percentage of SS among the average spots of the immunized peptide pulsed stimulator well. The positivity of antigen-specific T cell response were classified into four grades (, +, ++, and +++) depending on the amounts of peptide-specific spots and invariability of peptide-specific spots at different responder/stimulator ratios. SS, peptide-specific spots; R1, responder/stimulator ratio = 1; R2, responder/stimulator ratio = 0.5; R3, responder/stimulator ratio = 0.25; R4, responder/stimulator ratio = 0.125.