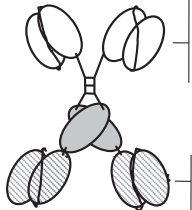


A



Targeting unit:

- 1) hCCL3 isoform LD78 $\beta$  or
- 2) scFv from NIP specific mAb or
- 3) scFv from I-E<sup>d</sup> specific mAb

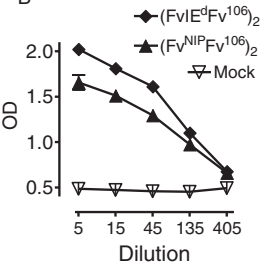
Dimerization unit:

H1+H4 exons and H $\gamma$ 3 CH3

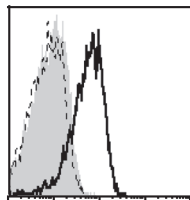
Antigenic unit:

- 1) scFv from CLL patients or
- 2) prototypic scFv from HCV-associated NHL

B



C



— (FvI-E<sup>d</sup>Fv<sup>P1</sup>)<sub>2</sub>  
 - - (FvNIPFv<sup>P1</sup>)<sub>2</sub>  
 ■ no vaccibody

D

