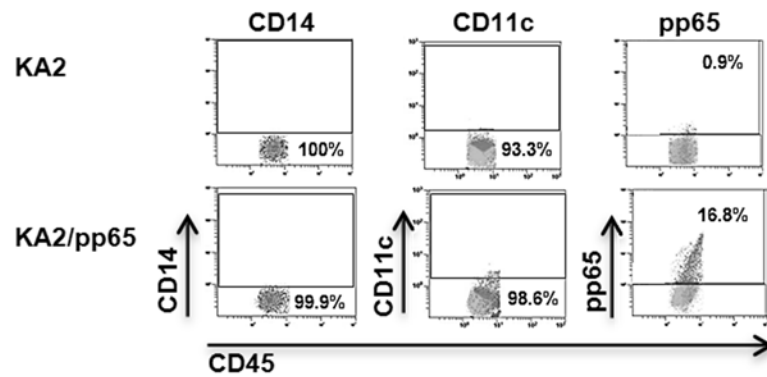


**Suppl Figure 2. Controls for flow cytometry analyses pp65 expression.**



**Supplementary Figure 2: Cell line control used in the characterization of pp65 expression in SmyleDCpp65 (GMP-like).** (A) KA2 cells and KA2 expressing pp65 (KA2/pp65) were used as negative and positive controls respectively for the qualitative determination of intracellular pp65 expression in SmyleDCpp65.