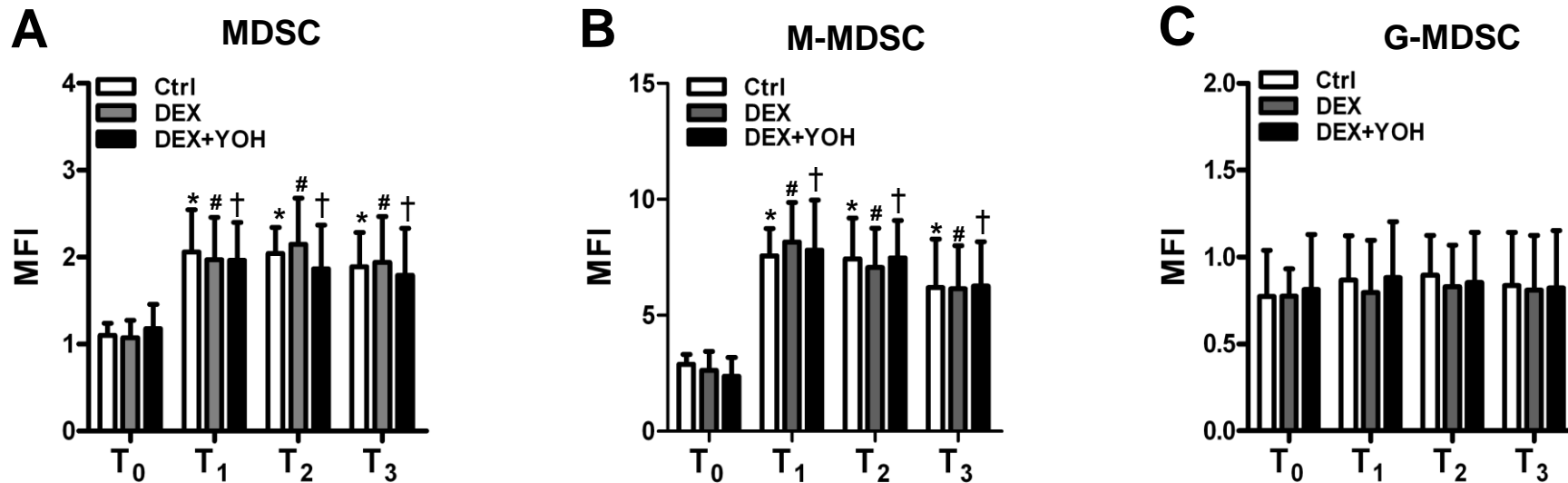


### Additional file 3: Figure S3



**Additional file 3: Figure S3. Expression of  $\alpha_2$ -AR on mouse MDSC.** LLC cells were injected s.c. into the dorsa of C57BL/6 mice. When tumours were 1,500 mm<sup>3</sup> in size, the mice were divided into 3 groups and treated with PBS (Ctrl), DEX or DEX and YOH (DEX + YOH). Then the mice immediately underwent surgical removal of the tumor. Expression of  $\alpha_2$ -AR was analyzed on days 0, 1, 3 and 7 (depicted as T<sub>0</sub>, T<sub>1</sub>, T<sub>2</sub> and T<sub>3</sub>) after surgery on the CD11b<sup>+</sup>Gr-1<sup>+</sup> (MDSC), CD11b<sup>+</sup>Ly6C<sup>high</sup>Ly6G<sup>-</sup> cells (M-MDSC) and CD11b<sup>+</sup>Ly6C<sup>low</sup>Ly6G<sup>+</sup> (G-MDSC) of lungs of mice (three mice per group at each time point) by flow cytometry. Mean fluorescent intensity (MFI) of  $\alpha_2$ -AR on (A) MDSC, (B) M-MDSC and (C) G-MDSC was assessed. \**P* < 0.001 as compared with T<sub>0</sub> in Ctrl group; # *P* < 0.001 as compared with T<sub>0</sub> in DEX group; † *P* < 0.001 as compared with T<sub>0</sub> in DEX+YOH group.