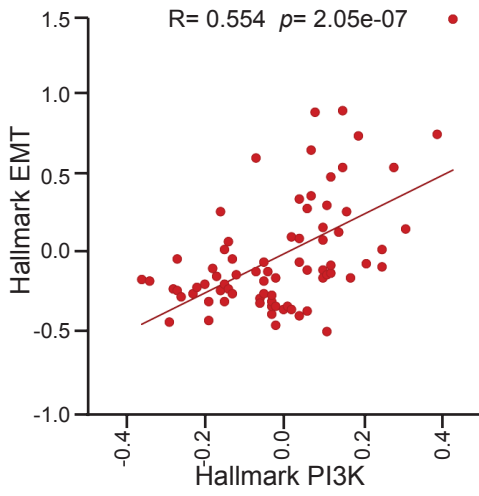


**A**

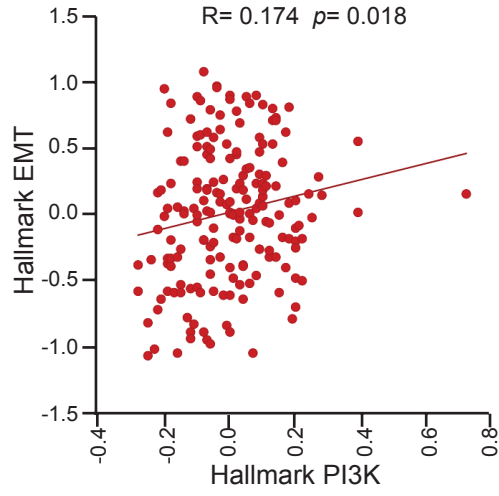
**Fitzgerald EAC n = 76**

$R = 0.554$   $p = 2.05e-07$



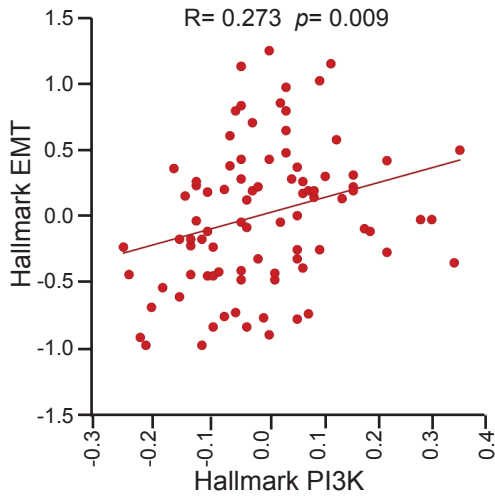
**TCGA n = 184**

$R = 0.174$   $p = 0.018$



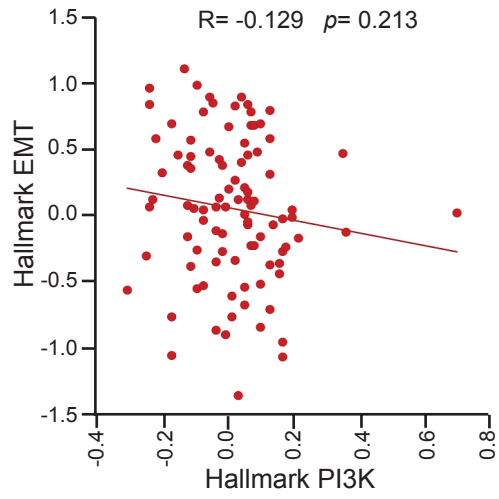
**TCGA EAC n = 89**

$R = 0.273$   $p = 0.009$



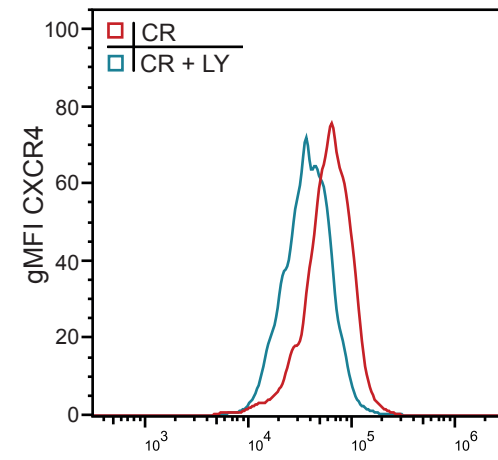
**TCGA ESC n = 95**

$R = -0.129$   $p = 0.213$



**B**

**031M**



**289B**

