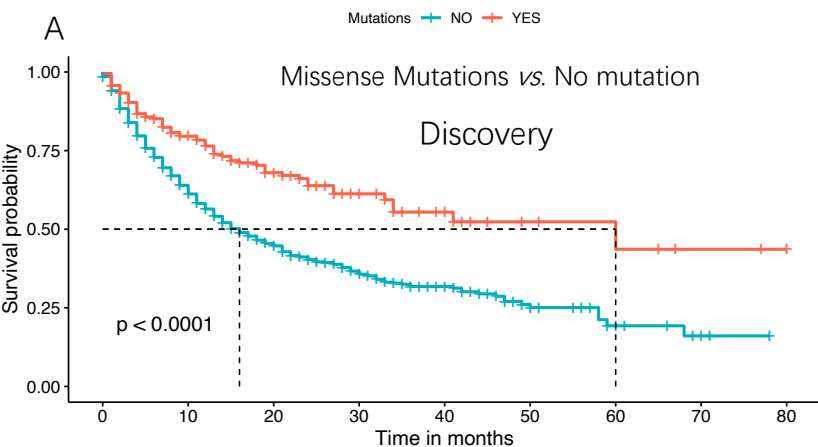


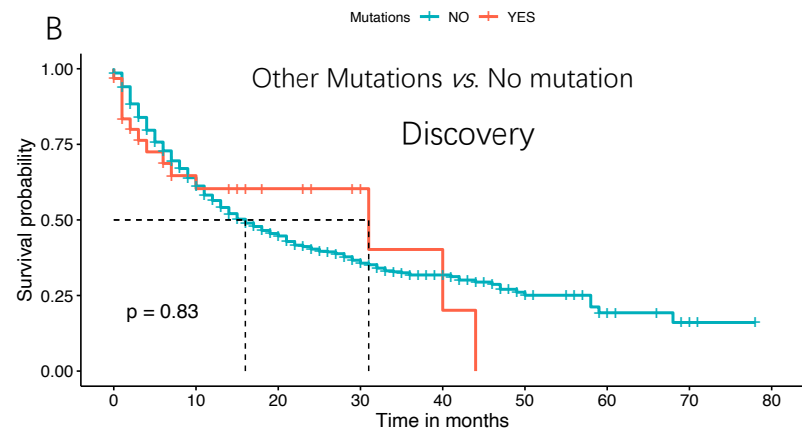
# Figure S1



Number at risk

NO	1420	742	340	152	63	26	9	3	0
YES	210	132	82	39	19	7	6	3	2

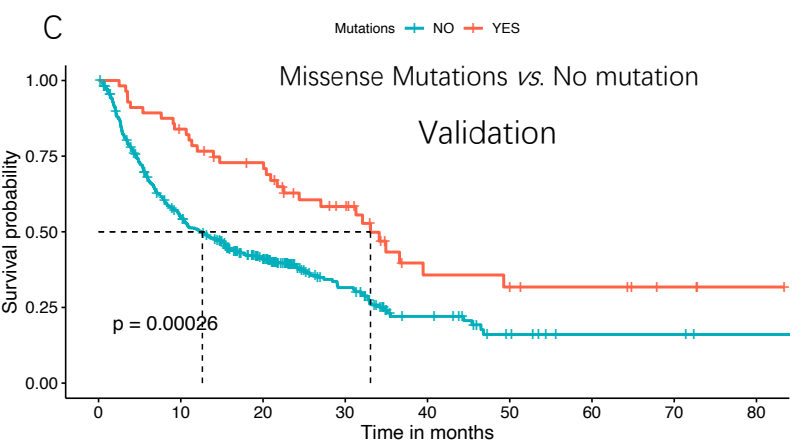
Comparison	HR (95% CI)	P
Yes vs. No	0.59 (0.45-0.77)	$9.33 \times 10^{-5}$



Number at risk

NO	1420	742	340	152	63	26	9	3	0
YES	31	15	7	4	2	0	0	0	0

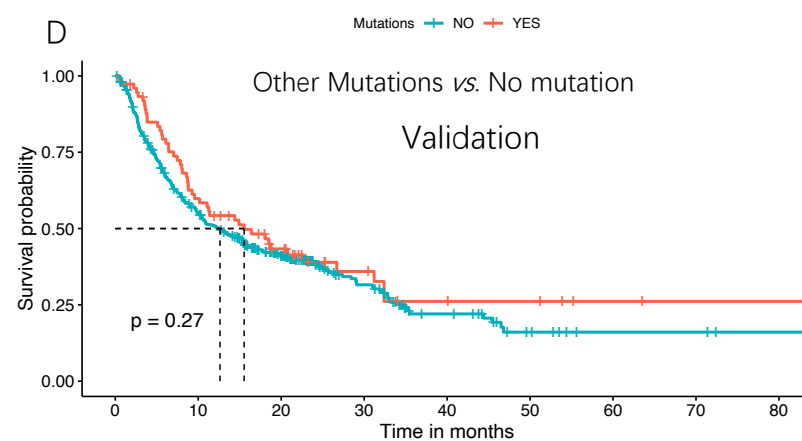
Comparison	HR (95% CI)	P
Yes vs. No	1.11 (0.65-1.91)	0.695



Number at risk

NO	423	218	125	47	20	8	3	3	1
YES	56	46	37	24	9	8	6	3	1

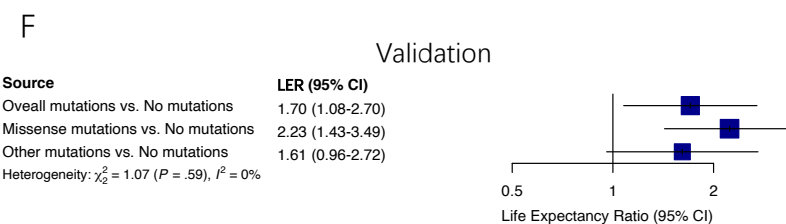
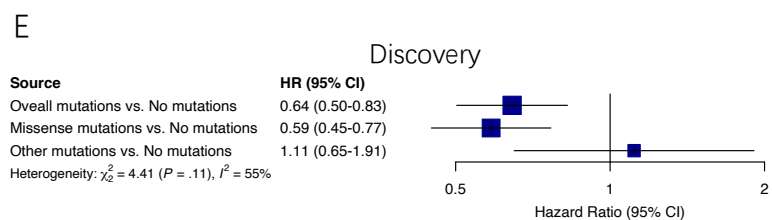
Comparison	LER (95% CI)	P
Yes vs. No	2.23 (1.43-3.49)	$4.71 \times 10^{-4}$



Number at risk

NO	423	218	125	47	20	8	3	3	1
YES	74	43	25	12	7	6	3	2	2

Comparison	LER (95% CI)	P
Yes vs. No	1.61 (0.96-2.72)	0.072



# Figure S2

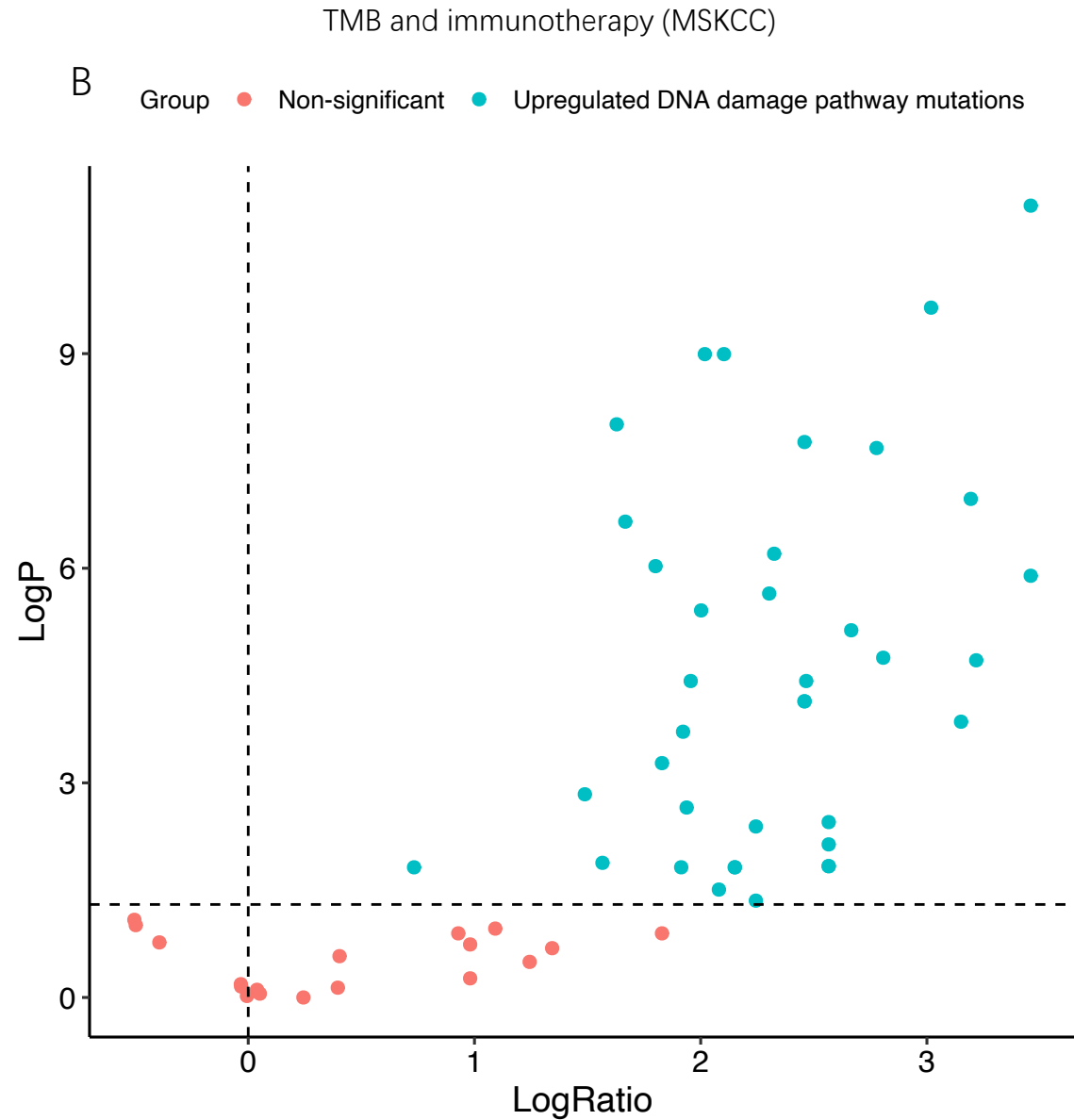
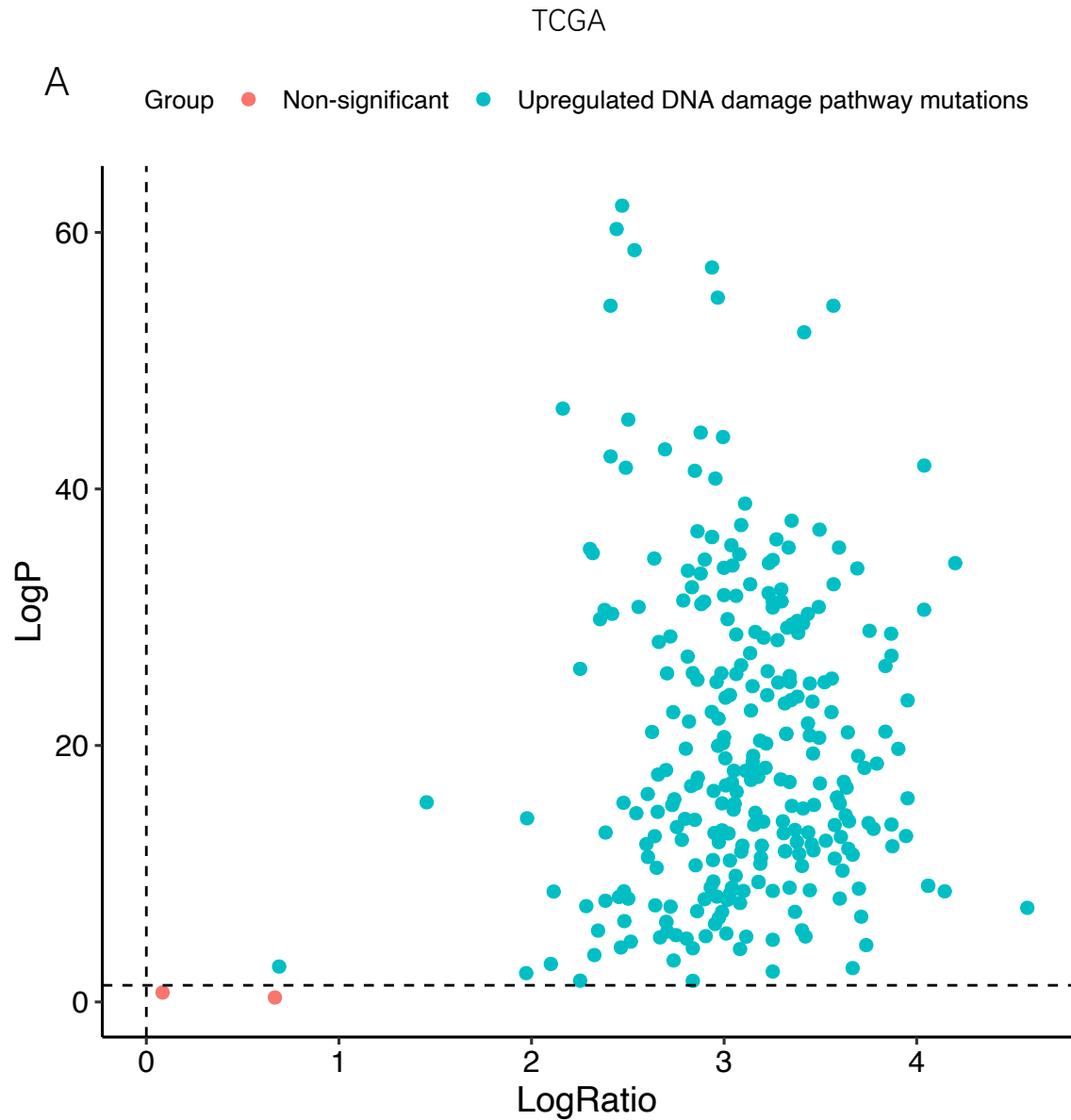
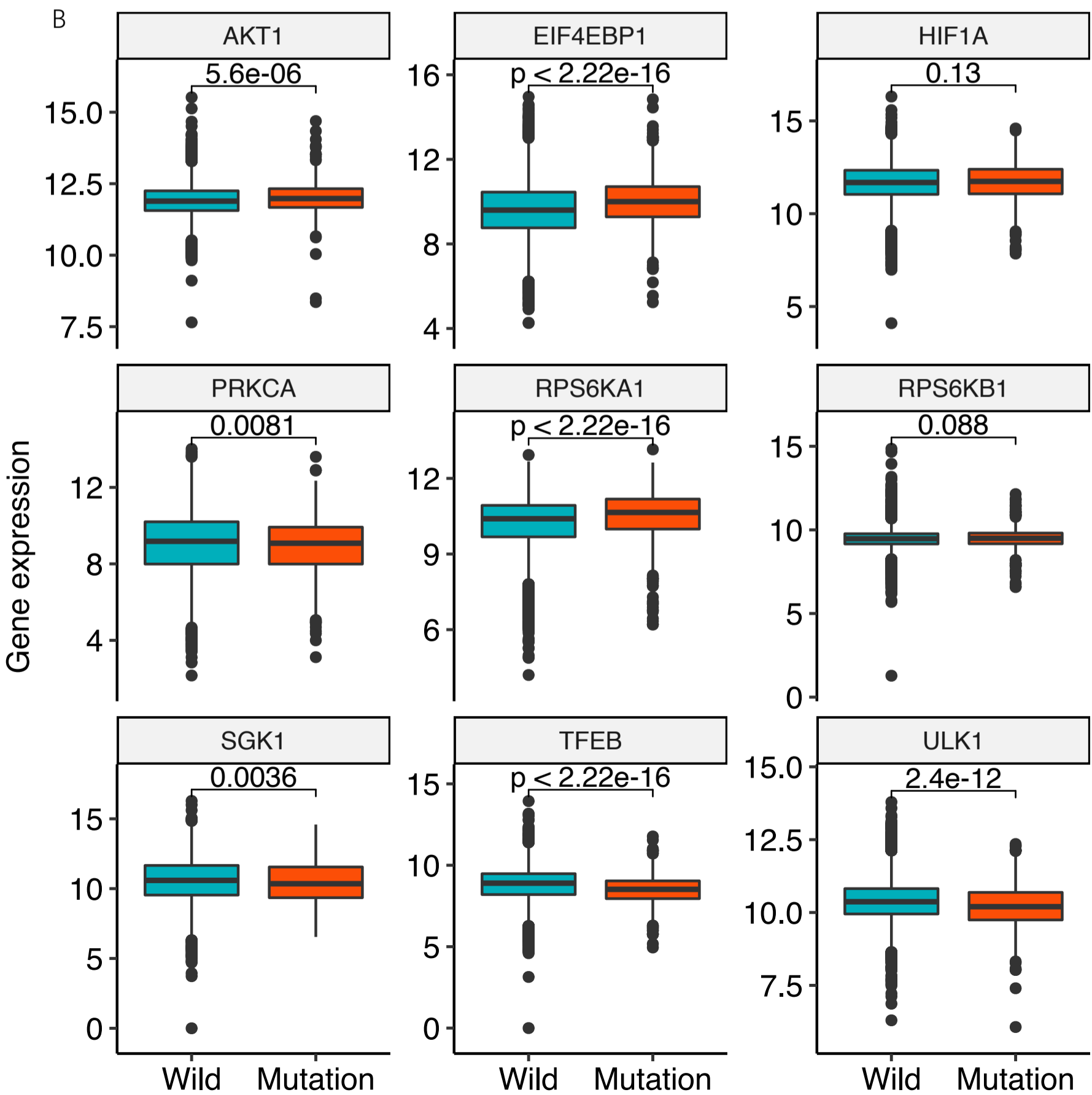
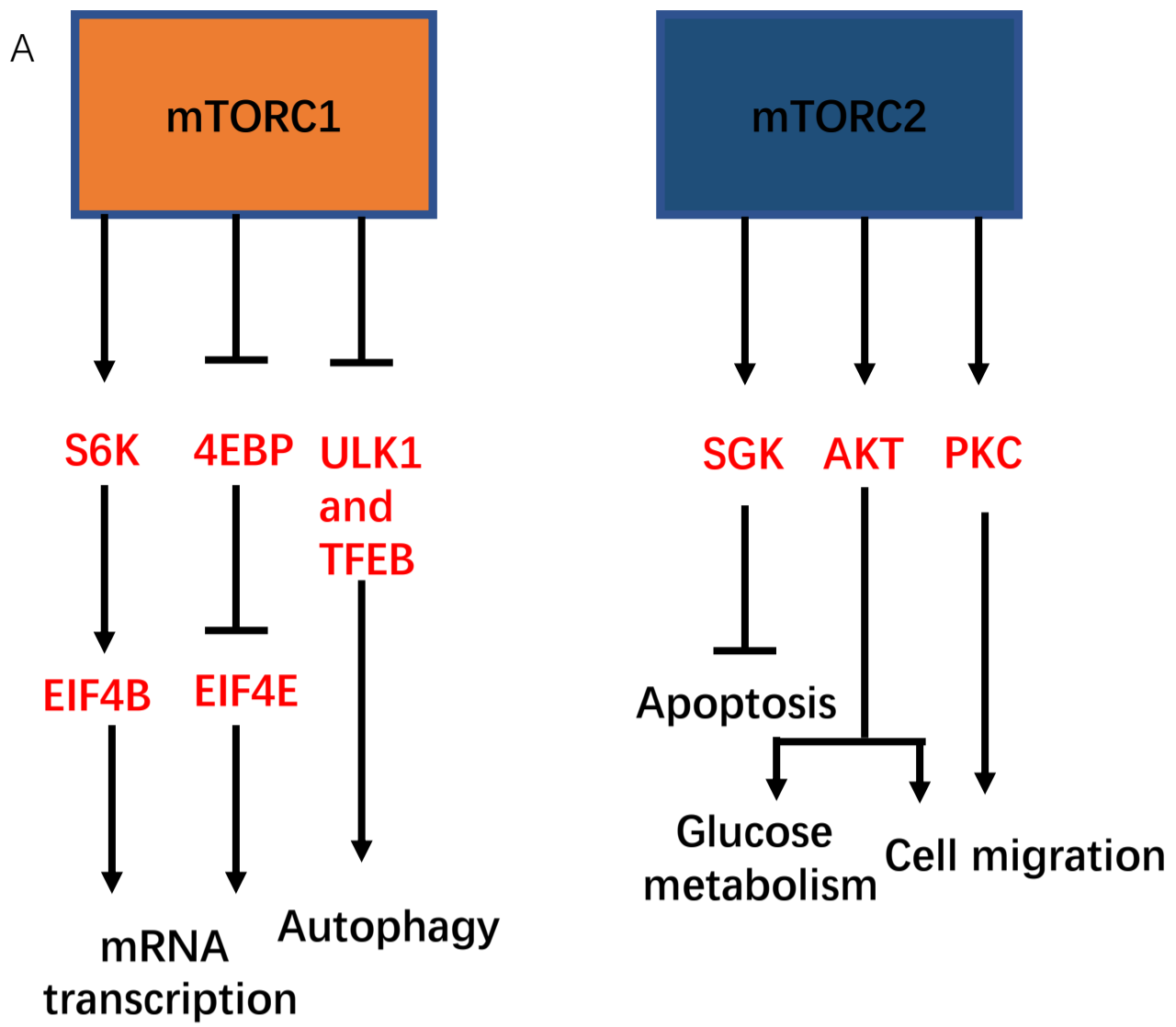


Figure S3



# A Figure S4

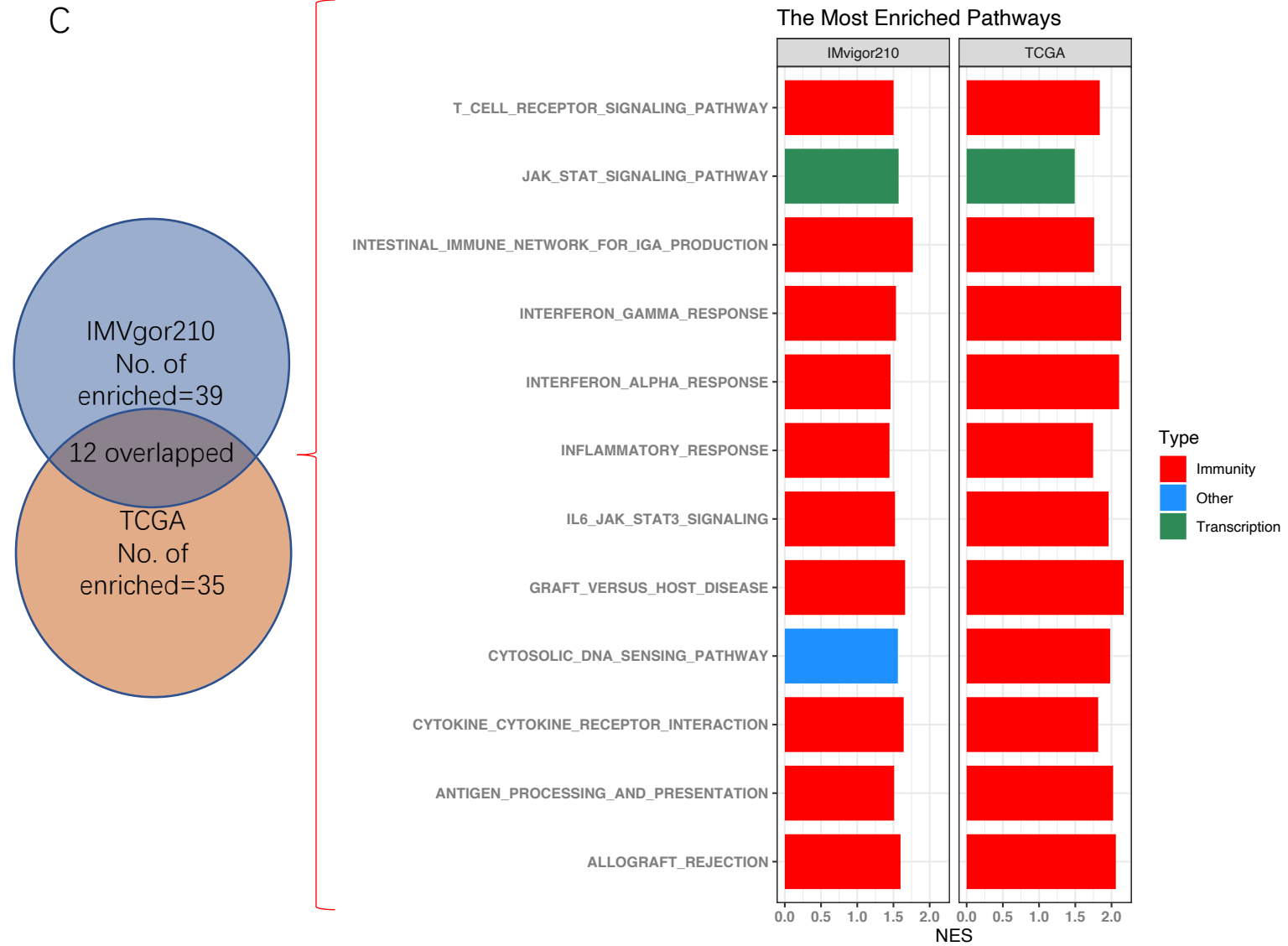
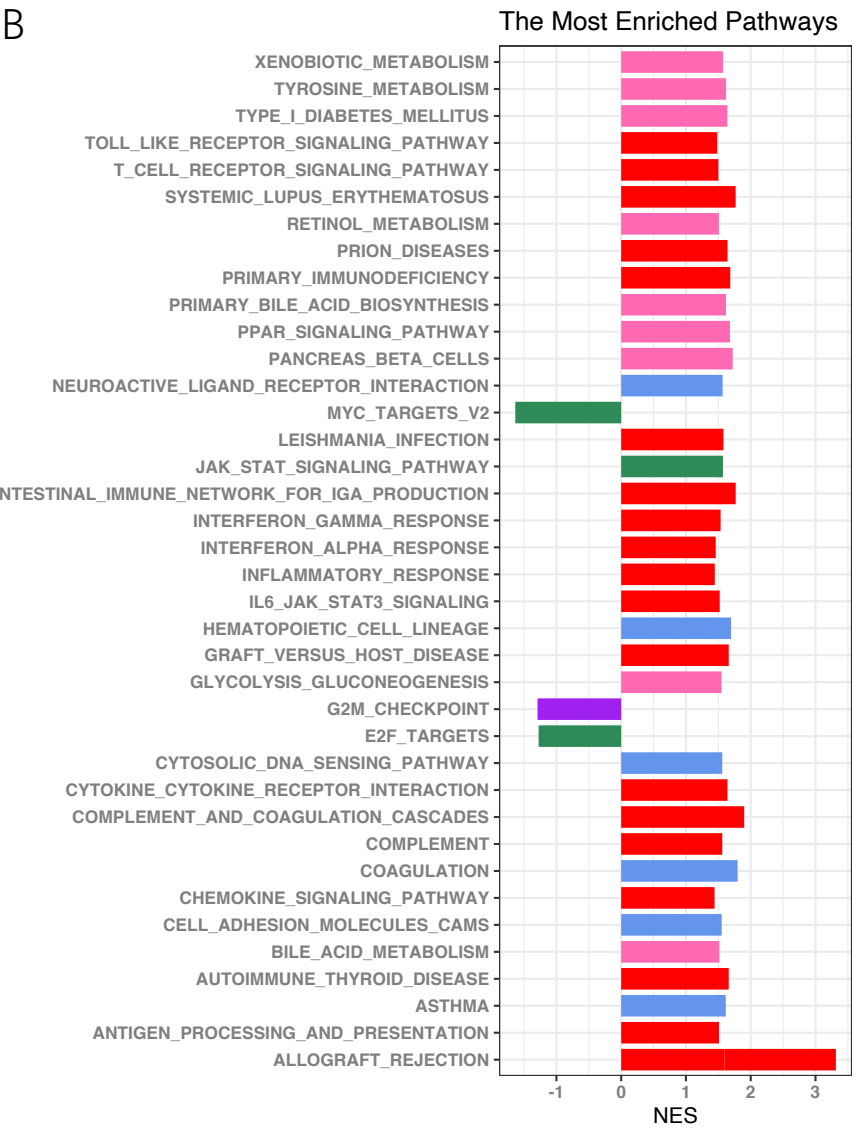
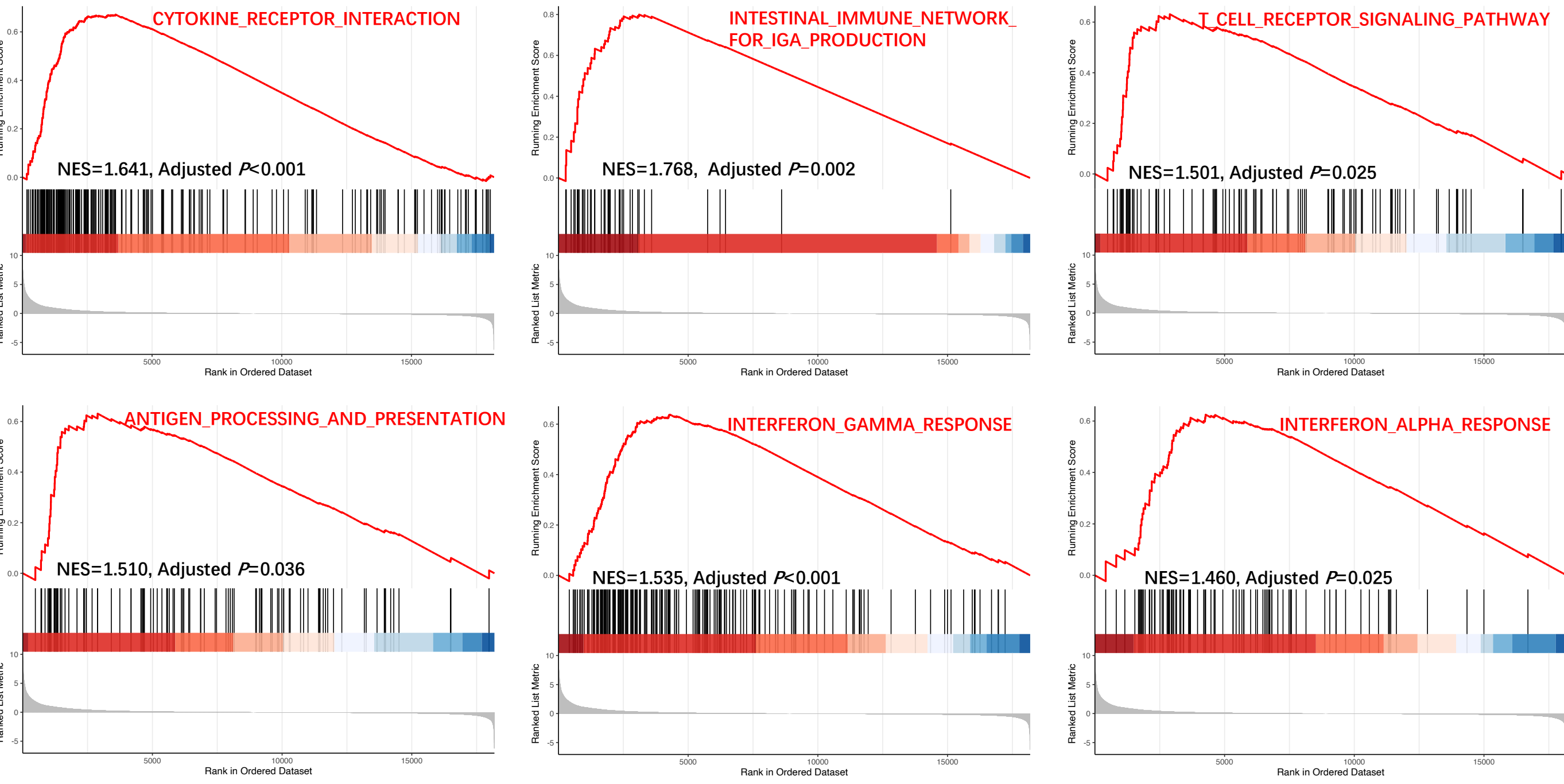
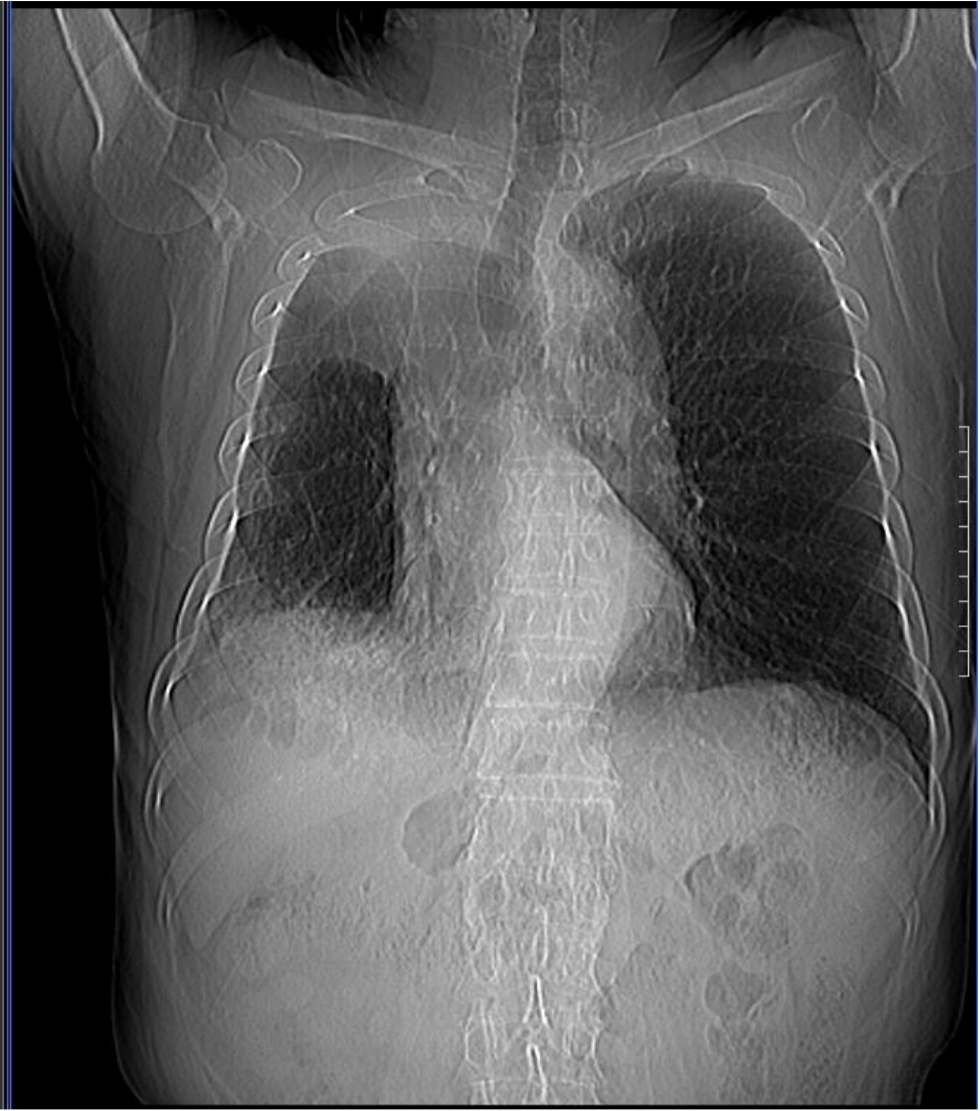
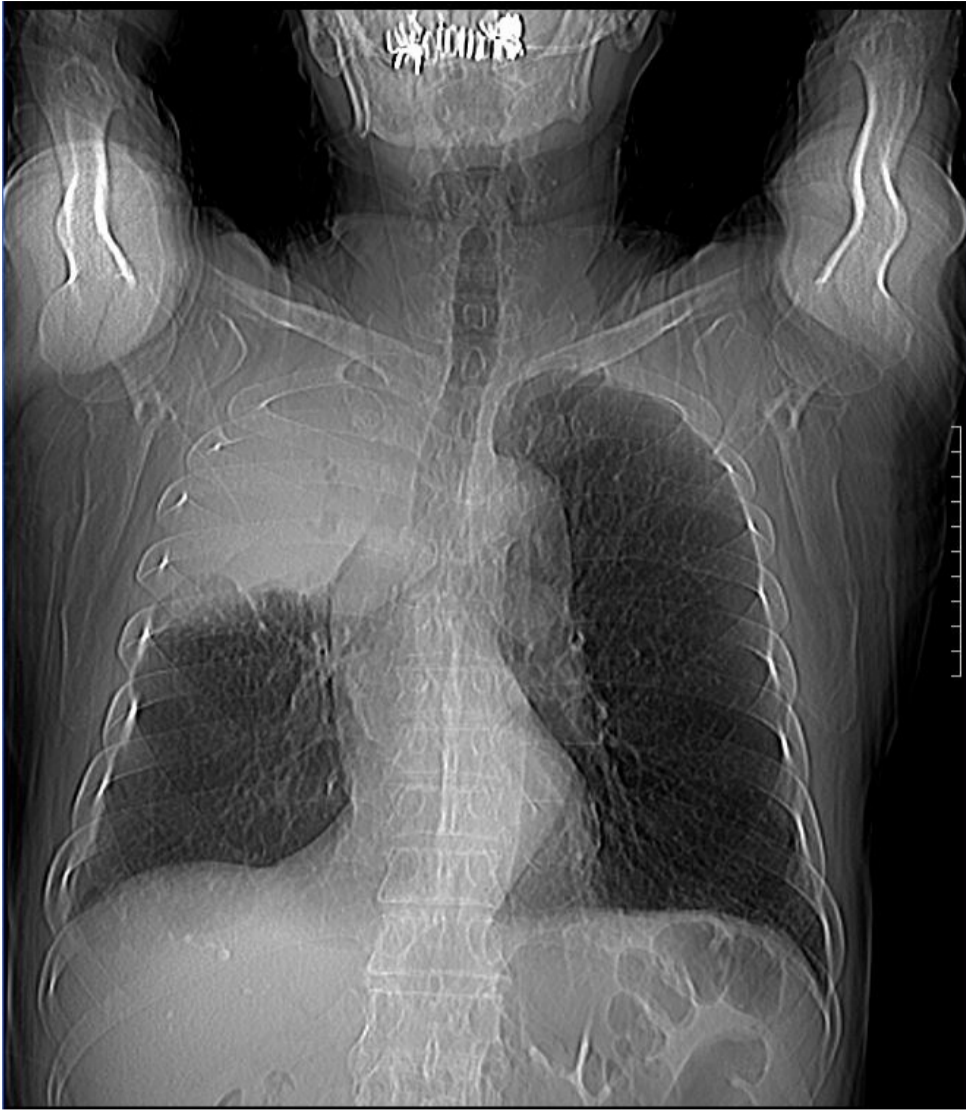


Figure S5

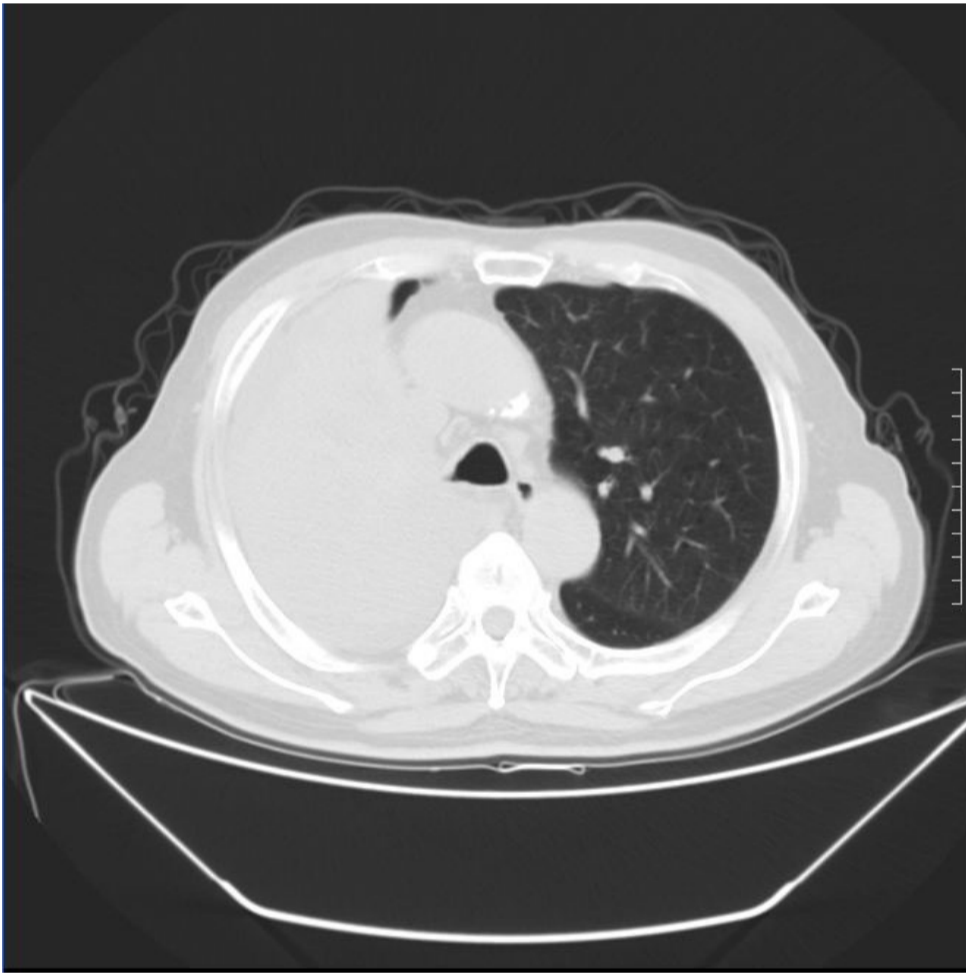
Baseline

After 2-cycle pembrolizumab treatment

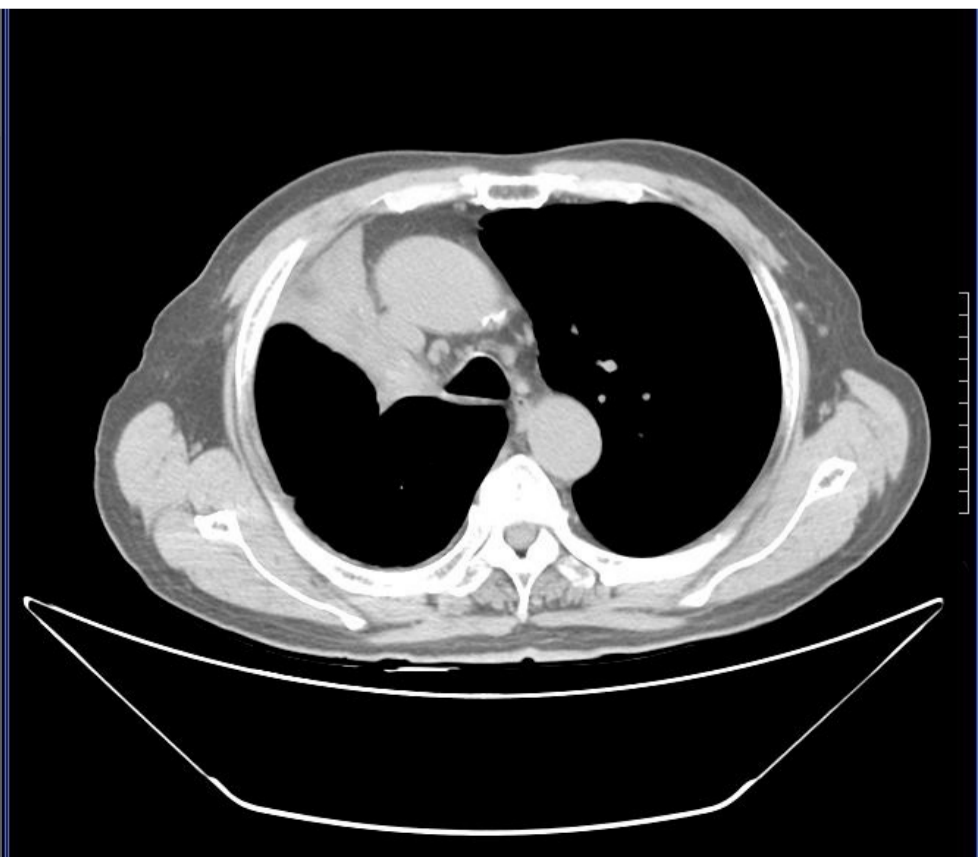
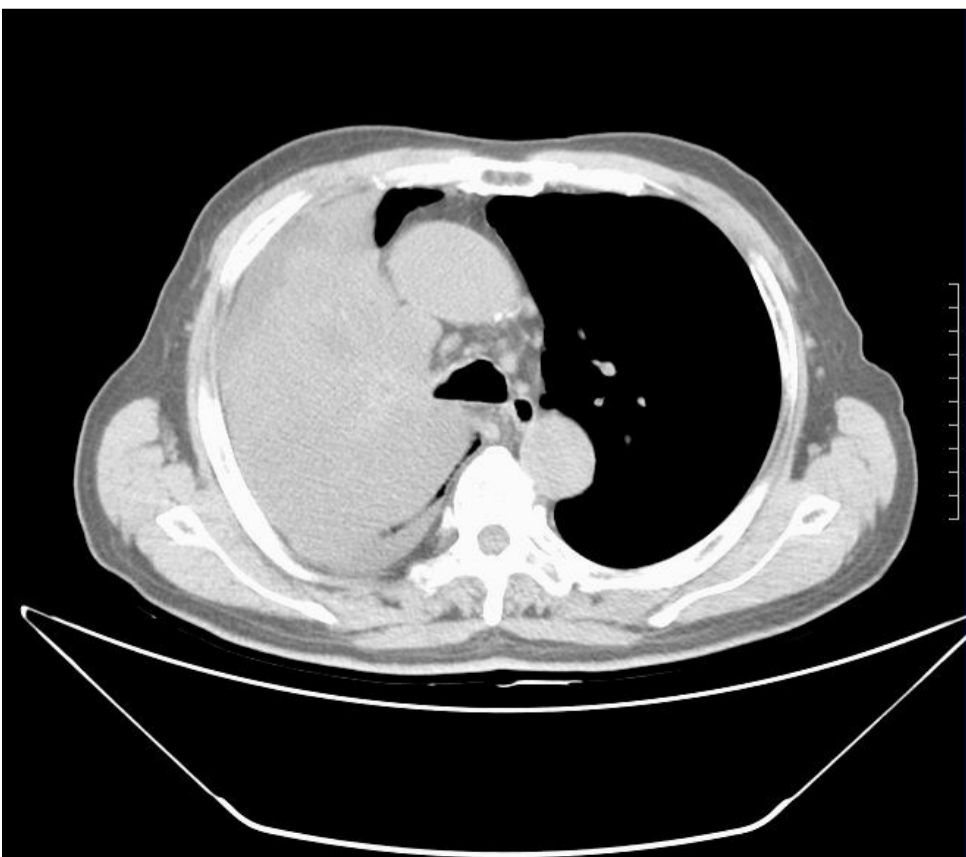
A



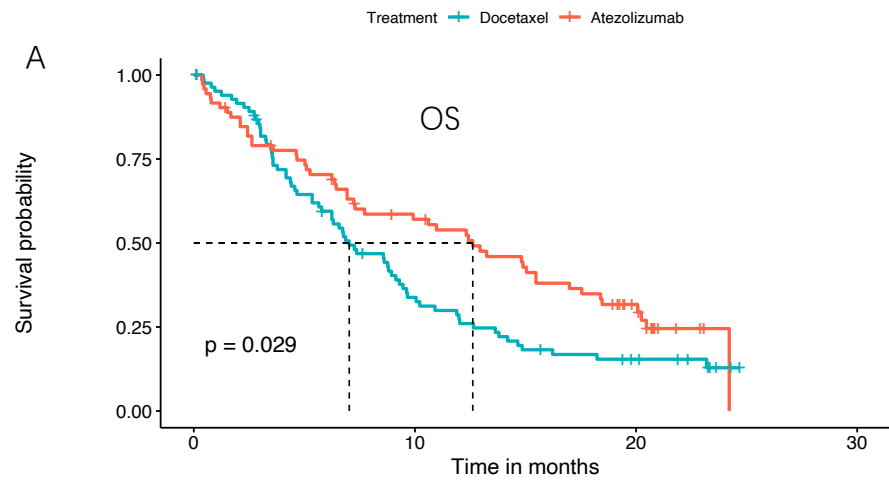
B



C



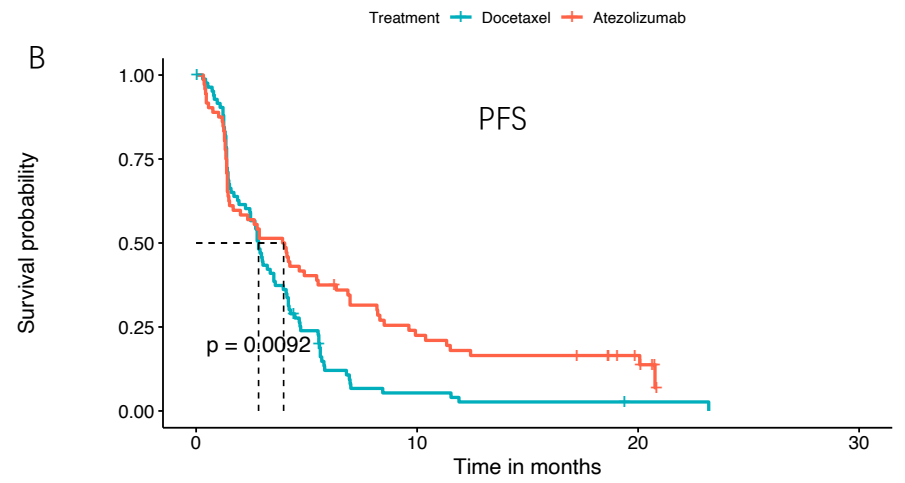
# Figure S6



Number at risk

Docetaxel	85	26	9	0
Atezolizumab	72	37	14	0

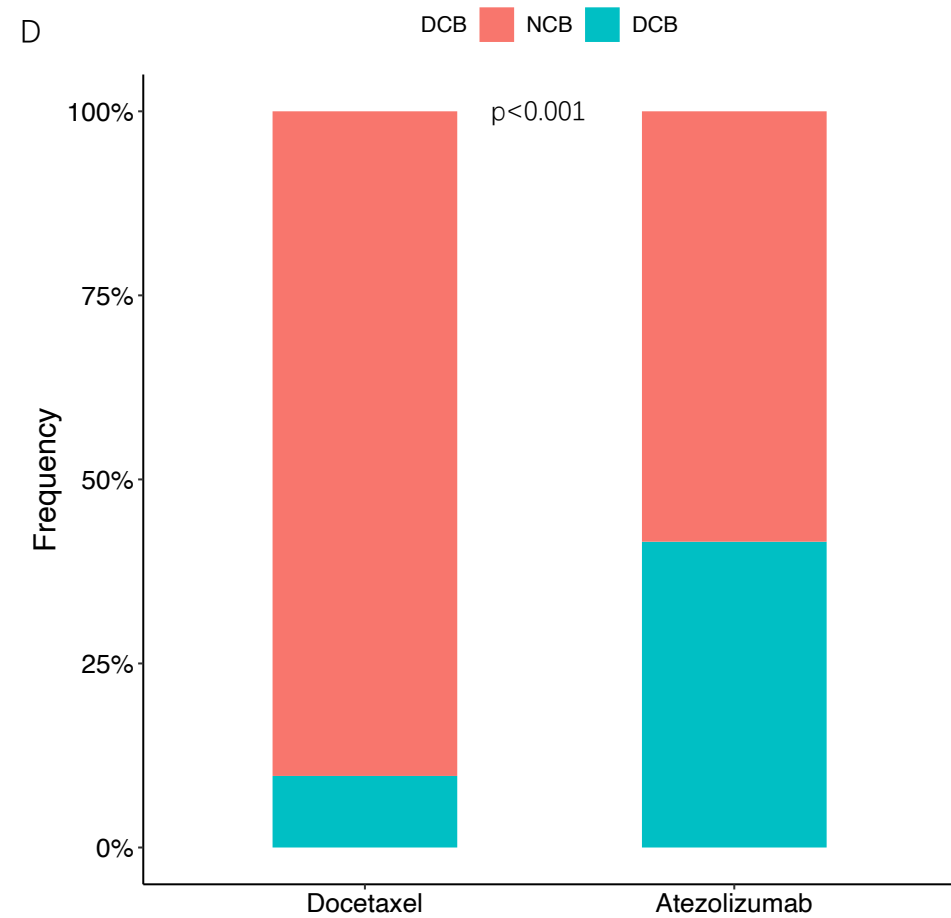
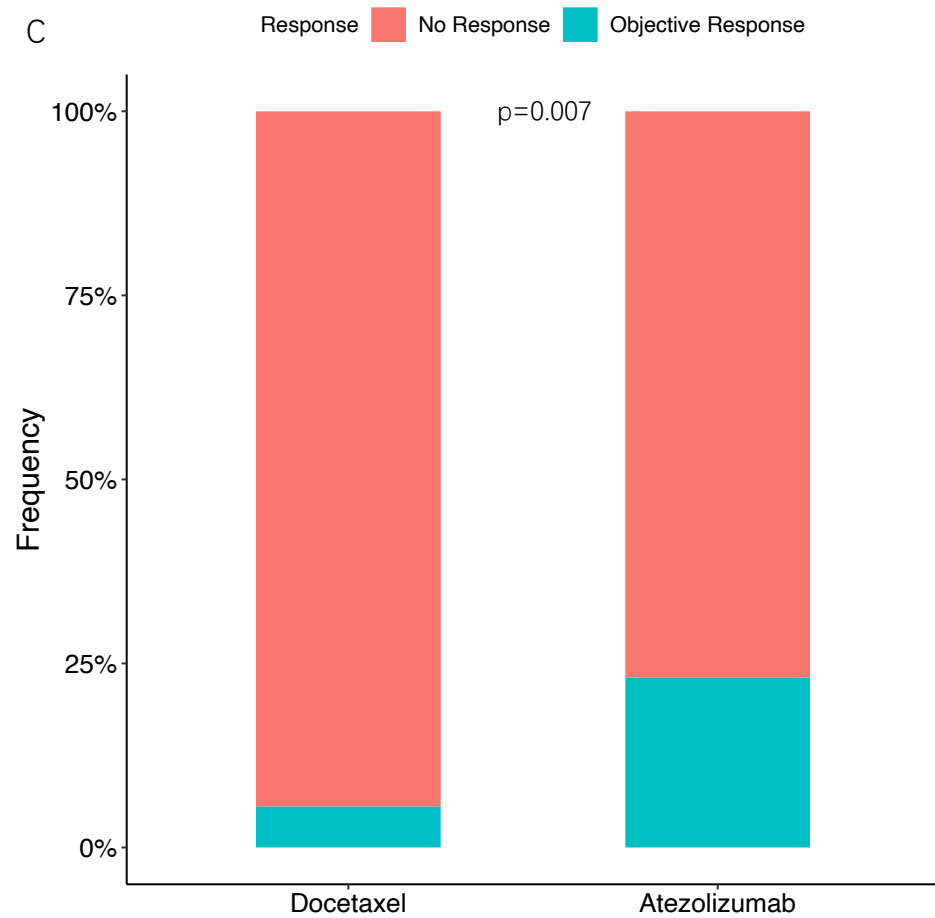
Comparison	HR (95% CI)	<i>P</i>
Atezo vs. Dox	0.57 (0.38-0.84)	0.005



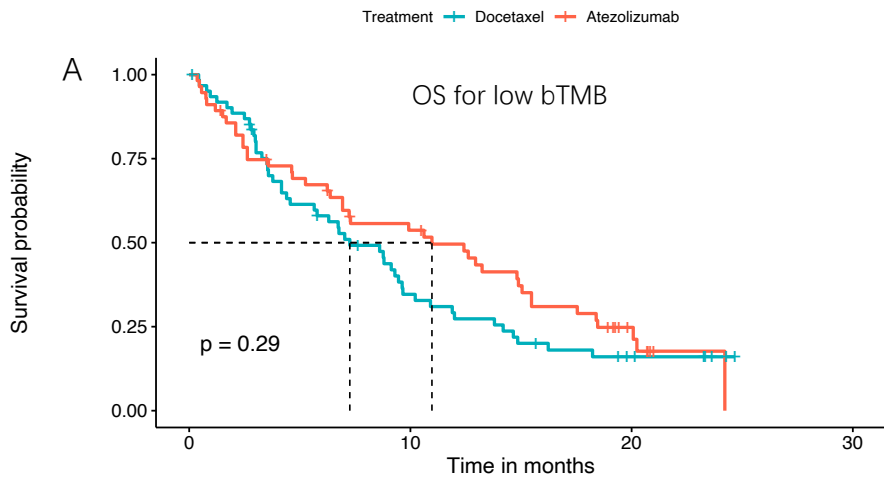
Number at risk

Docetaxel	85	4	1	0
Atezolizumab	72	15	6	0

Comparison	HR (95% CI)	<i>P</i>
Atezo vs. Dox	0.60 (0.42-0.87)	0.007



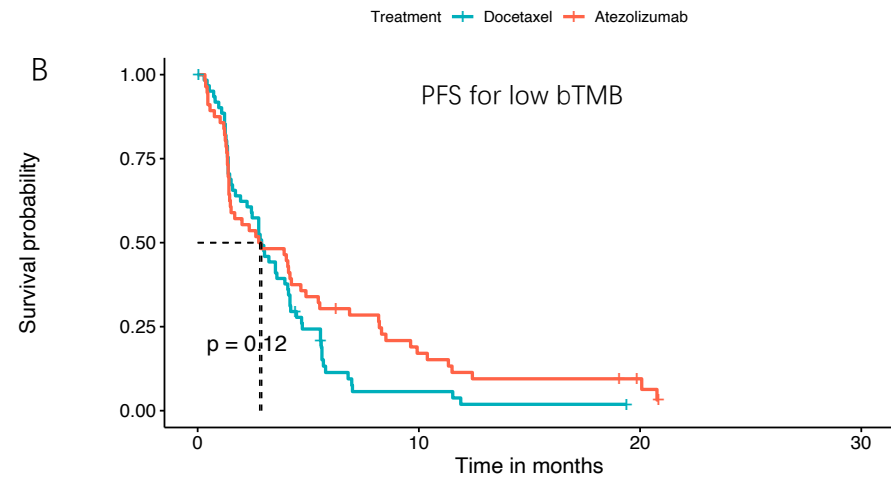
# Figure S7



Number at risk

Treatment	0	10	20	30
Docetaxel	62	19	6	0
Atezolizumab	56	27	7	0

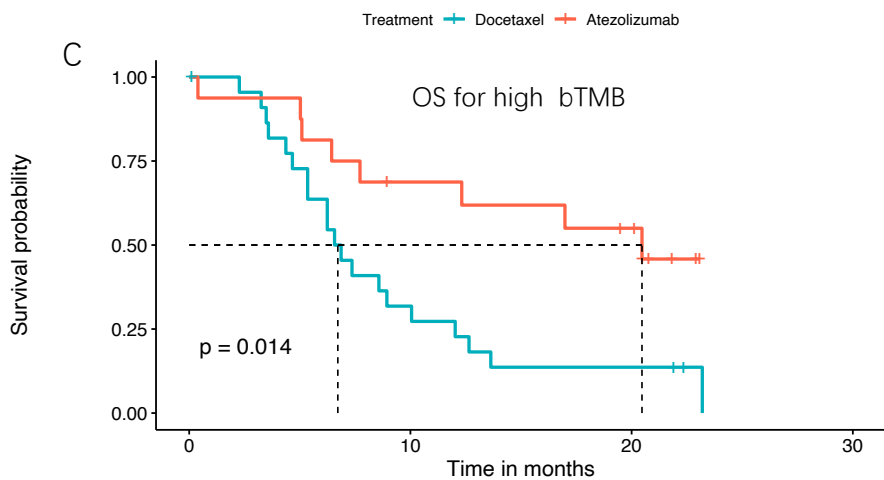
Comparison	HR (95% CI)	<i>P</i>
Atezo vs. Dox	0.60 (0.38-0.96)	0.033



Number at risk

Treatment	0	10	20	30
Docetaxel	62	3	0	0
Atezolizumab	56	9	3	0

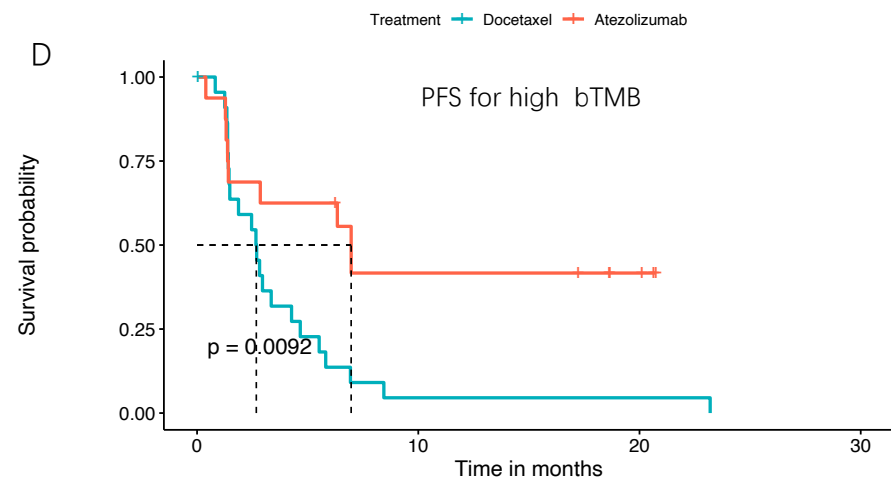
Comparison	LER (95% CI)	<i>P</i>
Atezo vs. Dox	1.51 (1.02-2.24)	0.040



Number at risk

Treatment	0	10	20	30
Docetaxel	23	7	3	0
Atezolizumab	16	10	7	0

Comparison	HR (95% CI)	<i>P</i>
Atezo vs. Dox	0.36 (0.15-0.88)	0.026



Number at risk

Treatment	0	10	20	30
Docetaxel	23	1	1	0
Atezolizumab	16	6	3	0

Comparison	LER (95% CI)	<i>P</i>
Atezo vs. Dox	1.46 (0.75-2.88)	0.263