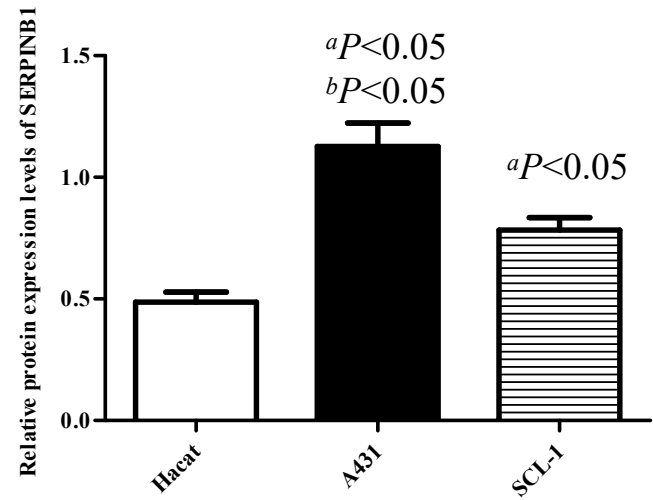
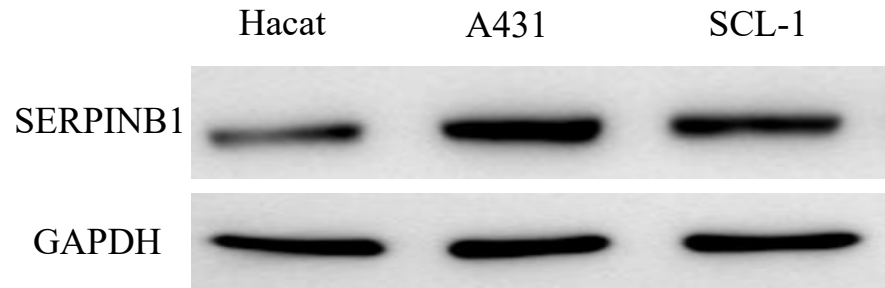
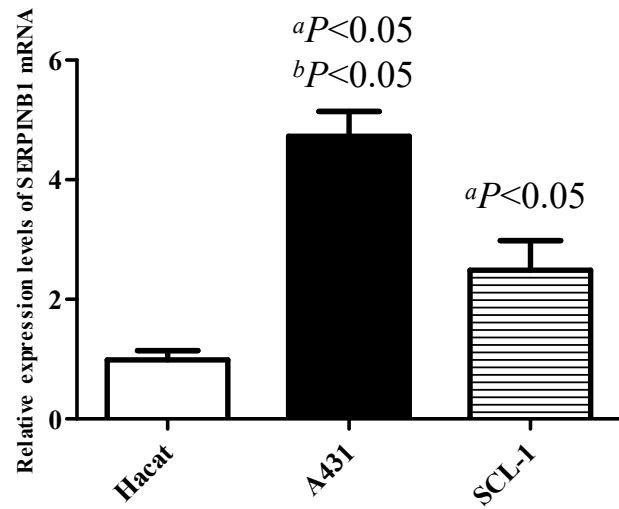


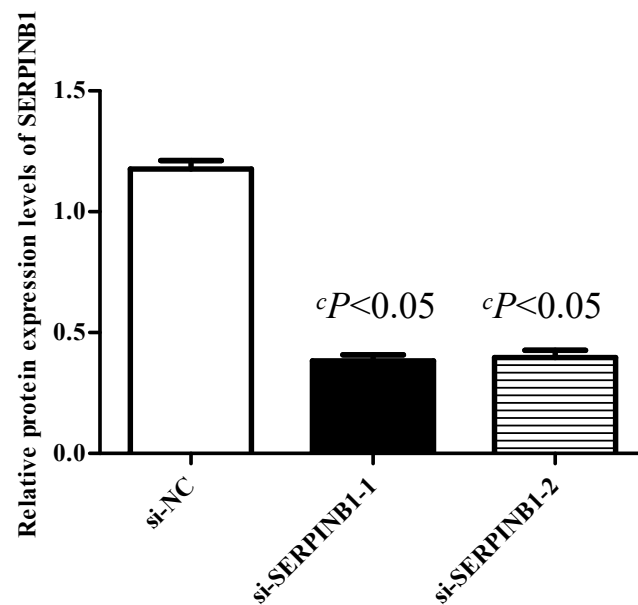
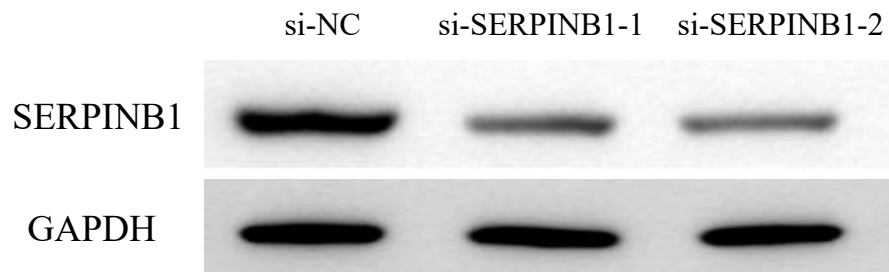
a



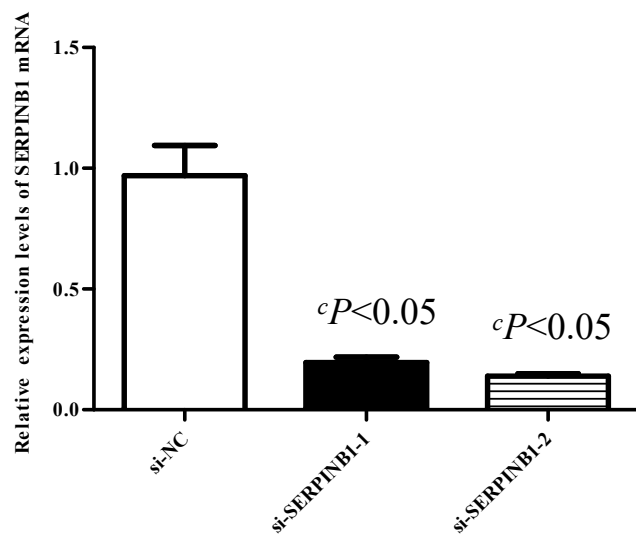
b



c



d



Supplemental Figure 3. The SERPINB1 protein (a) and mRNA (b) expression levels in CSCC cell line A431, SCL-1 and a human immortalized keratinocytes cell line Hacat were determined by Western blotting (a) and qRT-PCR (b). When compared with SCL-1, the SERPINB1 protein and mRNA expression levels in A431 were significantly higher ( $P<0.05$ ). Thus, the CSCC cell line A431 was selected for further research. When compared with si-NC, the SERPINB1 protein (c) and mRNA (d) expression levels in si-SERPINB1-1 and si-SERPINB1-2 were significantly lower ( $P<0.05$ ). When compared with Hacat,  $^aP<0.05$ ; When compared with SCL-1,  $^bP<0.05$ ; When compared with si-NC,  $^cP<0.05$ . si-SERPINB1, A431 cells transfected with this specific siRNA; si-con, A431 cells transfected with nonspecific siRNA.