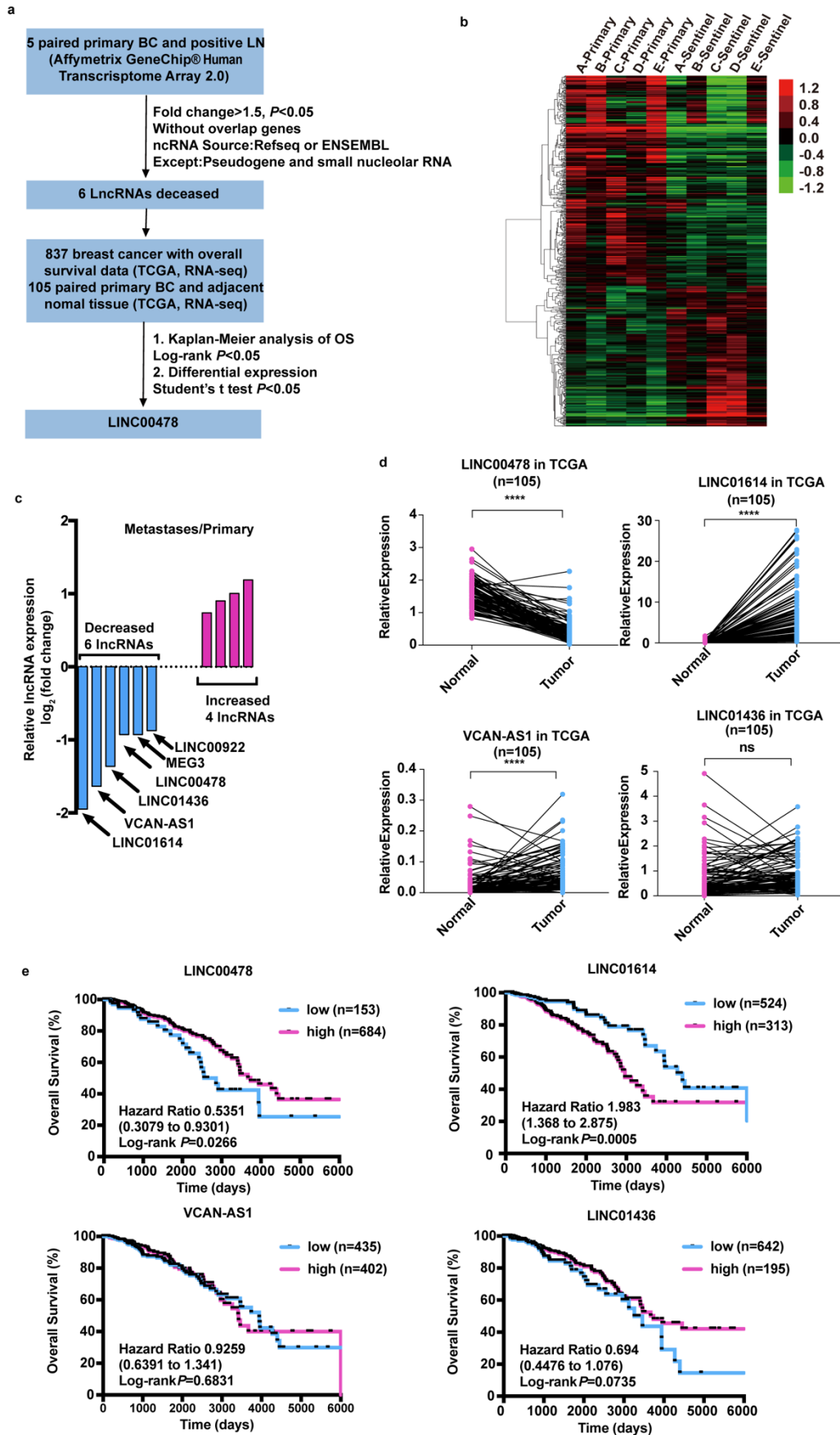
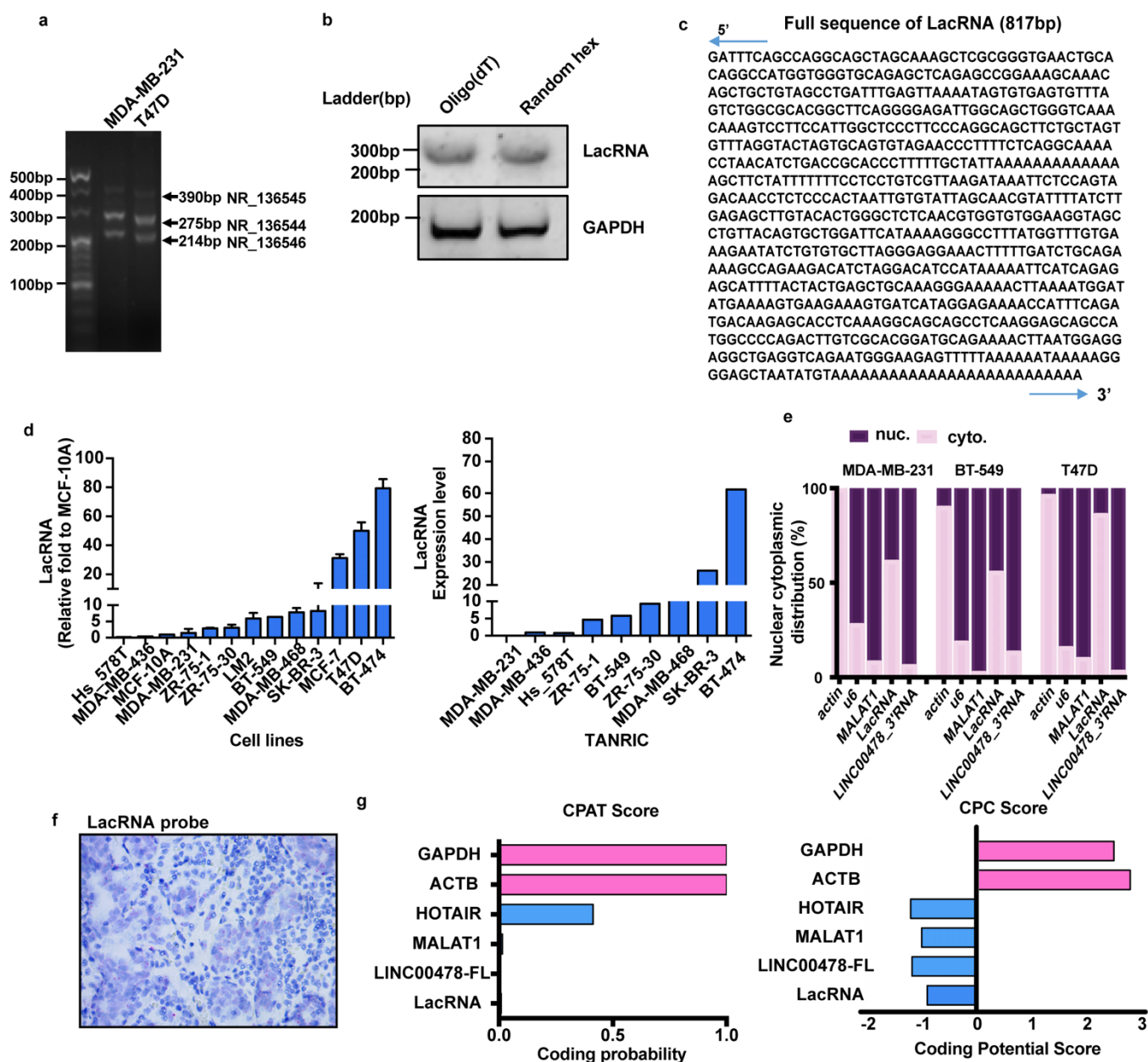


# Additional Figures



**Figure S1. The screening of lncRNAs associated with breast cancer progress.**

(a) Schematic flow chart for screening lncRNAs associated with breast cancer progression. (b) Heat map of RNA microarray data showing different expression RNA between primary breast tumors and paired axillary lymph node metastatic loci. (c) Microarray data showing the relative expression of candidate lncRNAs differentially expressed in metastatic tissues and primary tumor tissues. (d) TCGA database of LINC00478, LINC01614, VCAN-AS1 and LINC01436 relative expression in 105 paired primary breast cancer and adjacent normal tissues. *P* values were determined by Mann-Whitney test. ns, not significant, \*\*\*\**p*<0.0001. (e) TCGA database of LINC01614, VCAN-AS1 and LINC01436 expression and overall survival in 837 breast cancer patients (Kaplan-Meier log rank test).

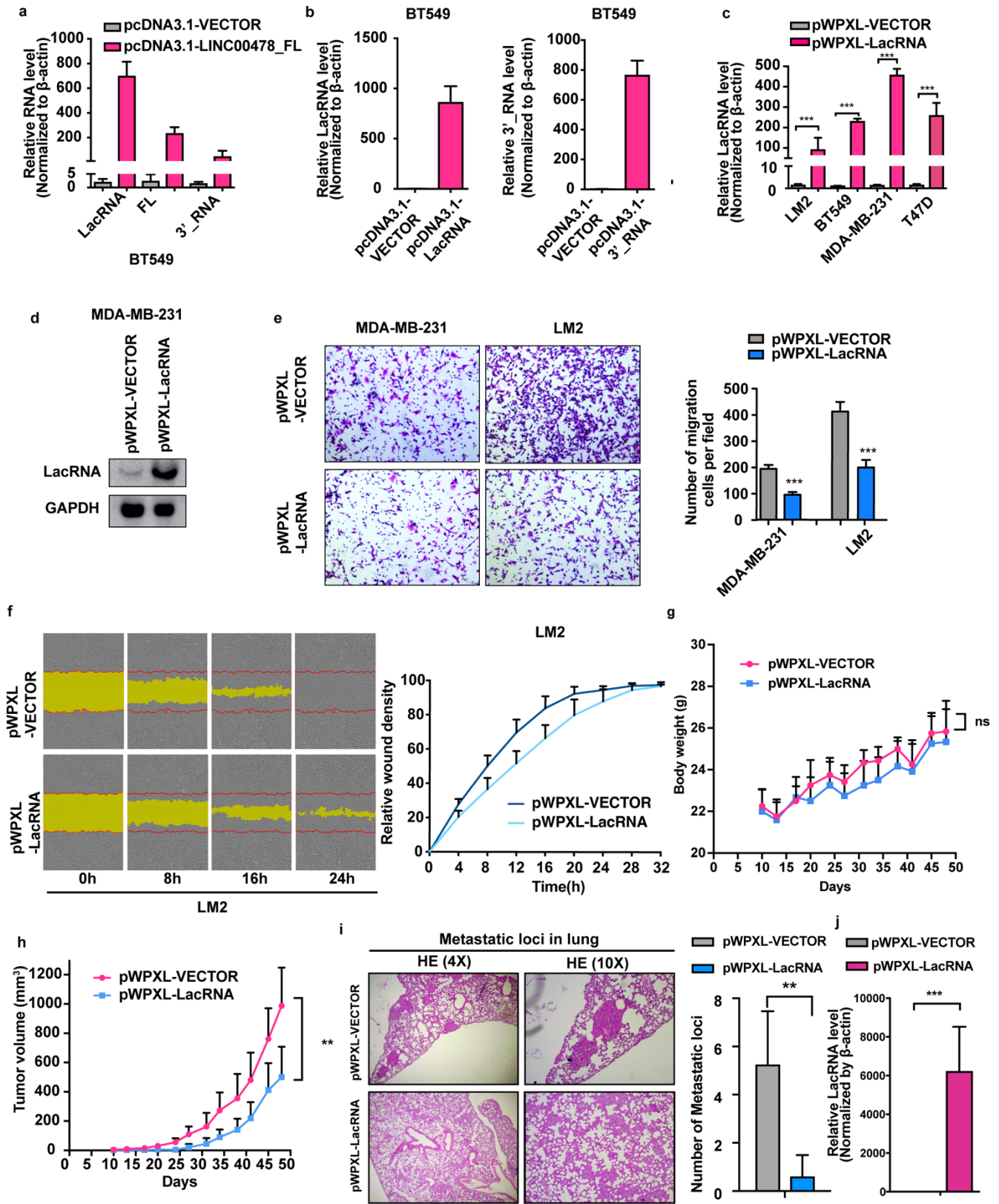


**Figure S2. LacRNA is a small cytoplasm RNA derived from LINC00478 in breast cancer cells.**

(a) The relative expression of isoforms NR\_136544, NR\_136545 and NR\_136546 in MDA-MB-231 and T47D cells according to semi-quantitative PCR amplification of exon 7 and exon 11 junction. (b) RT-PCR experiment using oligo dT or Random primer to reverse-transcribe total cell RNA separately, to confirm the existence of the poly A tail. (c) Sequence of LacRNA cloned from MDA-MB-231 cell cDNA. The sequence identified by RACE assays. (d) The expression level of LacRNA in different breast cancer cell

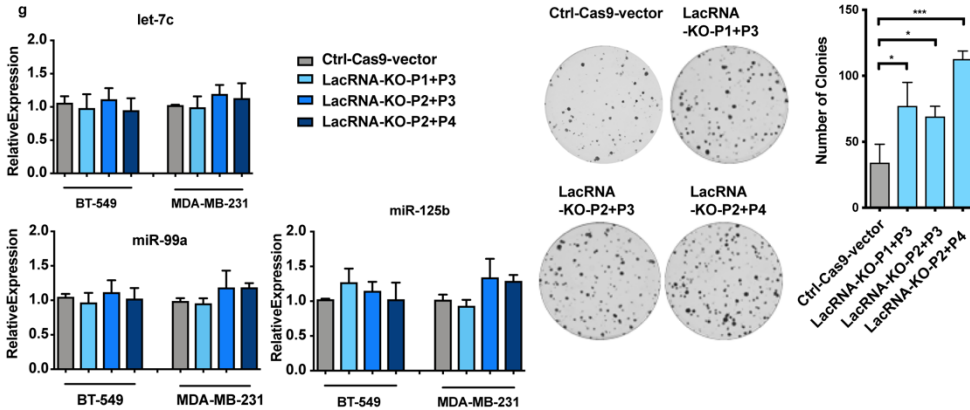
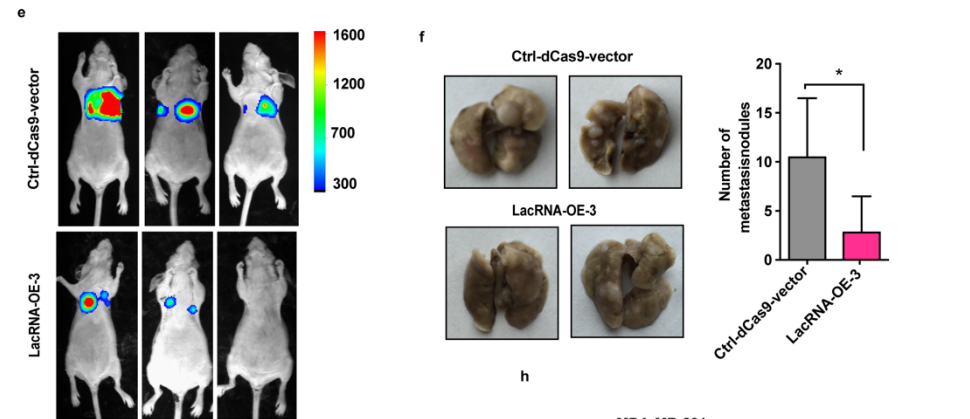
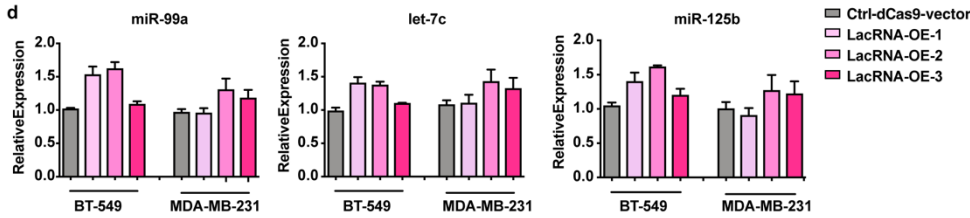
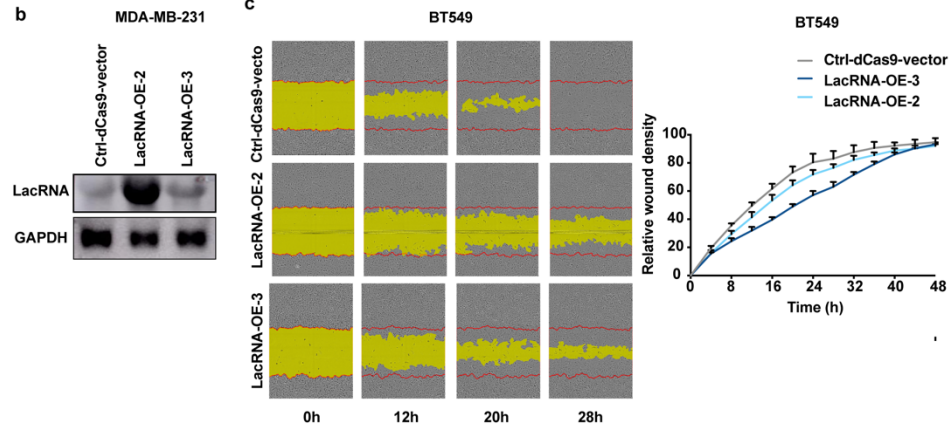
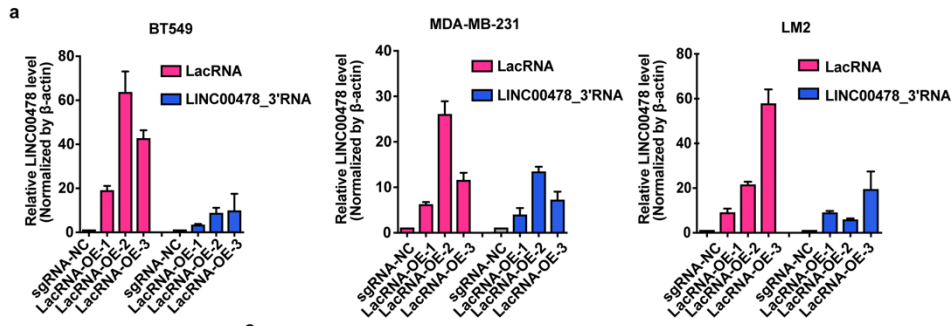
lines measured by RT-qPCR and TANRIC database separately. **(e)** RT-qPCR of the nuclear and cytoplasmic fractionations of MDA-MB-231, BT549 and T47D cells. Compared with nuclear lncRNA MALAT, cytoplasmic internal reference actin and nuclear internal reference U6. The data shown represent three independent experiments. **(f)** Representative image of RNA scope assay to show the subcellular localization of LacRNA. red, LacRNA RNA. **(g)** The protein coding potential of LINC00478 full length and LacRNA, using Coding Potential Assessment Tool (CPAT, <http://lilab.research.bcm.edu/cpat/>) and Coding Potential Calculator (CPC, <http://cpc.cbi.pku.edu.cn/>). GAPDH and  $\beta$ -actin served as the positive controls of coding genes, and HOTAIR and MALAT1 served as the negative control of non-coding genes.





**Figure S3. LacRNA inhibits breast cancer metastasis.**

**(a)** The level of lacRNA, LINC00478 full length and LINC00478\_3'RNA when LINC00478 full length was overexpressed by pcDNA3.1 in BT549 cells. **(b)** The overexpression of LacRNA and LINC00478\_3'RNA by pcDNA3.1 in BT549 cells. **(c)** The overexpression of LacRNA by lentivirus in LM2, BT549, MDA-MB-231 and T47D cell lines. **(d)** Northern-blotting for LacRNA in the pWPXL overexpression MDA-MB-231 cells. **(e)** Transwell migration assay in the MDA-MB-231 and LM2 cells with LacRNA overexpressed by lentivirus. **(f)** Wound healing assay with representative images in stable pWPXL-LacRNA and pWPXL-vector control cells. **(g, h) Body weights and** tumor volumes were measured in the pWPXL-LacRNA and negative control groups in the xenograft mouse models. **(i)** Representative data and statistical analysis of hematoxylin-eosin staining in the tumor foci of the lung samples obtained from NOD/SCID mice after injection with vector pWPXL-LacRNA and control pWPXL-vector LM2 cells, n=6. **(j)** Seven weeks after implantation of orthotopic transplanted tumors in mice, the orthotopic tumors were removed, and the expression level of LacRNA in orthotopic tumor was verified by qPCR. Values are expressed as the Mean  $\pm$  SEM in a-c and e. n=3 independent experiments. *P* values were determined by unpaired Student's *t*-test. ns, not significant, \*\**p*<0.01, \*\*\**p*<0.001.



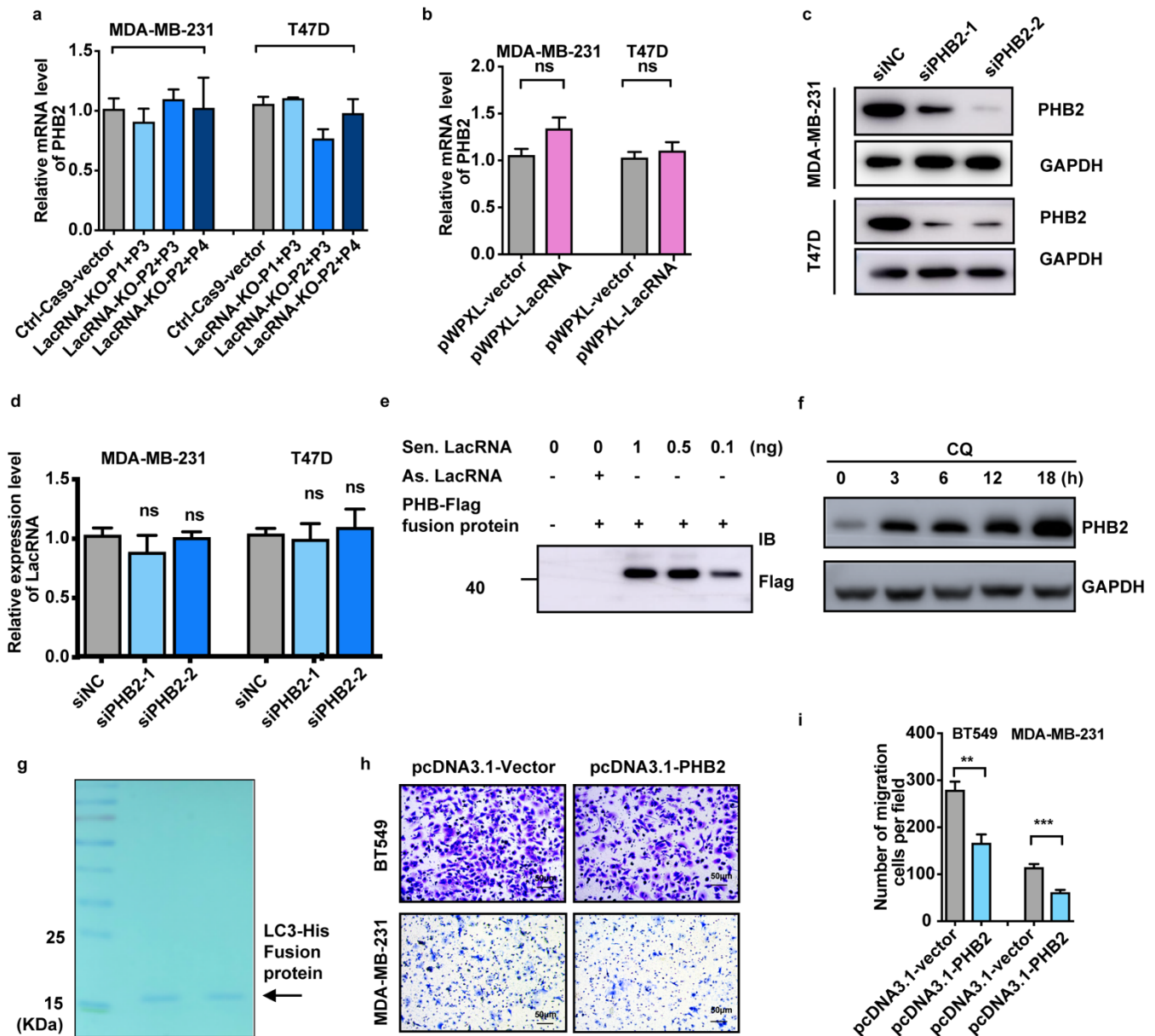
**Figure S4. LacRNA inhibits breast cancer metastasis.**

(a) The activation of LacRNA and 3'RNA by CRISPR-dCas9 technology activation in the BT549, MDA-MB-231 and LM2 cell lines, Mean  $\pm$  SEM; n=3 independent experiments. (b) Northern-blotting for LacRNA in the CRISPR-OE-2 or CRISPR-OE-3 cells, derived from MDA-MB-231 cells. (c) Representative images of wound healing assay in the BT-549 cells with LacRNA activation by the CRISPR/dead-Cas9 technology. (d) The expression of the microRNAs (let-7c, miR125b and miR99a) existed in the introns of LacRNA by qRT-PCR in LacRNA-endogenous- activated BT549 and MDA-MB-231 cells. (e) Representative images from BLI of the lungs of athymic BALB/c nude mice 5 weeks after the indicated cells were injected into the caudal vein, n=6. (f) Representative data and statistical analysis of lung metastasis in the control groups and LacRNA-activated groups. (g) The expression of the microRNAs (let-7c, miR125b and miR99a) existed in the introns of LacRNA by qRT-PCR in LacRNA-endogenous- knockout BT549 and MDA-MB-231 cells. (h) Representative images of colony formation assays in LacRNA-endogenous-knockout MDA-MB-231 cells. Values are expressed as the Mean  $\pm$  SEM; n=3 independent experiments. *P* values were determined by one way analysis of variance (ANOVA). \**p*<0.05, \*\*\**p*<0.001.



**Figure S5. Streptavidin pulldown assay and graphic illustration of predicted LacRNA secondary structure.**

**(a)** A list of the top LacRNA-associated proteins identified by RNA pulldown and MS analysis in MDA-MB-231 cells. **(b)** Schematic view of the predicted secondary structure of LacRNA and truncation-mapping of biotinylated LacRNA motifs as indicated. The red boxes represent the three truncation fragments of LacRNA, with the corresponding number labeled. **(c)** Schematic view of the predicted secondary structure of LacRNA 1-300nt motif and deletion-mapping of biotinylated LacRNA motifs as indicated. The red boxes represent the deleted fragments of LacRNA, with the corresponding number labeled. **(d)** The mass spectrometry identification of 30- kDa LacRNA-binding proteins.

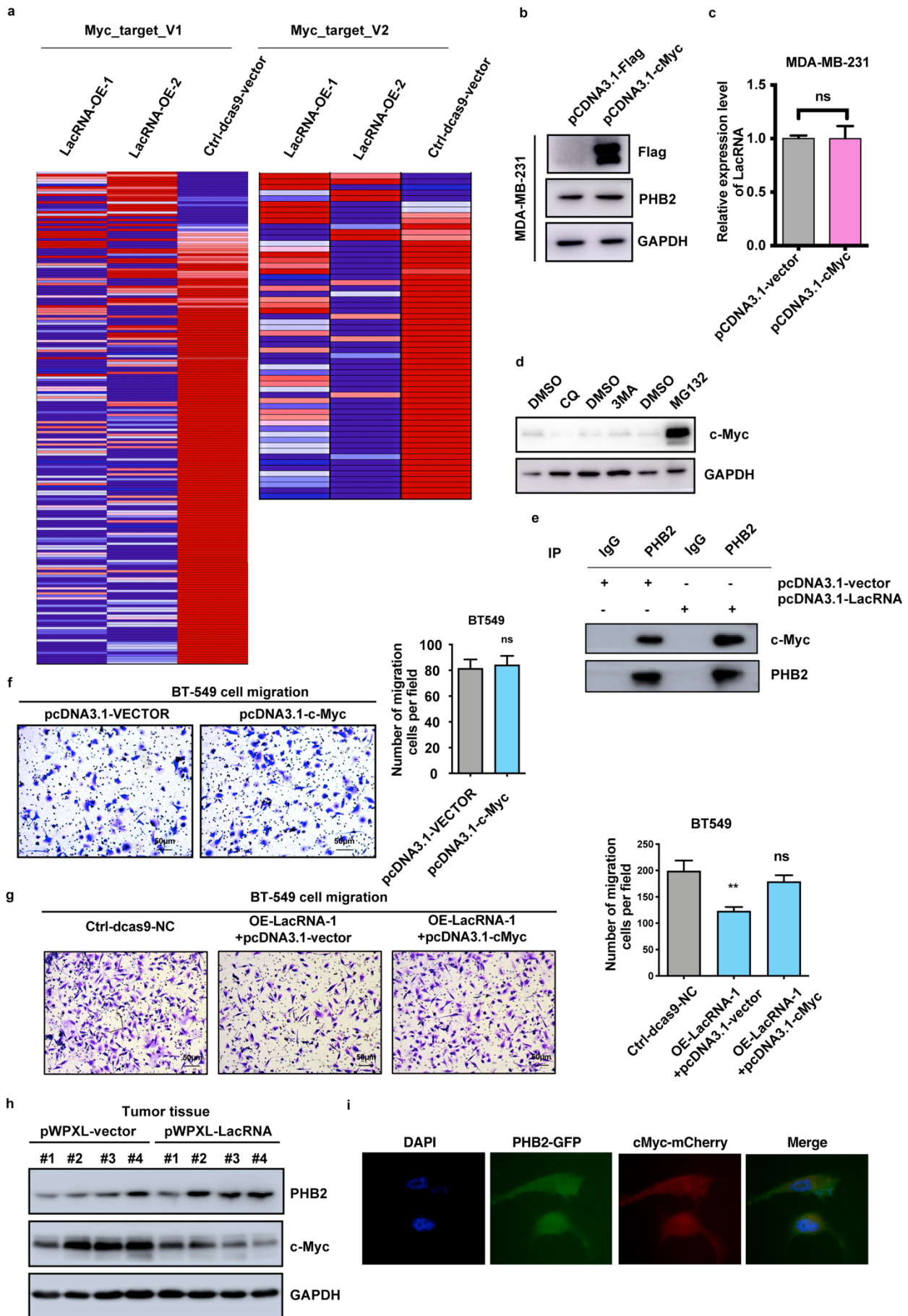


**Figure S6. LacRNA physically interacts with PHB2 in breast cancer cells.**

(a, b) The mRNA level of PHB2 was quantified by RT-qPCR in MDA-MB-231 and T47D cells with LacRNA knockout (a) or overexpression (b), Mean  $\pm$  SEM; n=3 independent experiments. (c) Immunoblotting of the efficiencies of two independent siRNAs for PHB2 in MDA-MB-231 and T47D cells. (d) The expression level of LacRNA was quantified by RT-qPCR in MDA-MB-231 and T47D cells with PHB2 knockdown. (e) Immunoblotting of PHB2 in pull-down samples by different density biotinylated-LacRNA. (f) Immunoblotting for PHB2 levels in the breast cancer cells treated with autophagy inhibitors chloroquine (CQ) for indicated times. (g) Exogenous synthetic LC3-His protein. (h)

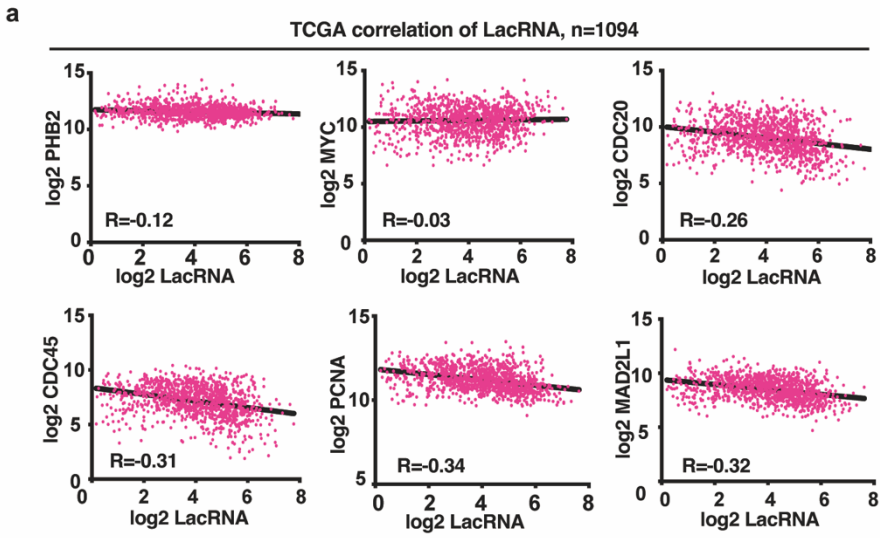
Representative images of transwell migration assays for BT-549 and MDA-MB-231 cells overexpressing PHB2. **(i)** Quantitative images of transwell migration assays of BT-549 and MDA-MB-231 cells with PHB2 overexpressed.





**Figure S7. The LacRNA-PHB2 complex is a negative regulator of MYC signaling.**

(a) Heat map of RNA-sequencing data after LacRNA activation showing different expression of MYC targets genes in GSEA MYC target gene set v1 and v2. (b) Immunoblotting for the protein levels of PHB2 and c-Myc after c-Myc overexpressed. GAPDH served as the internal control. (c) The expression level of LacRNA was quantified by RT-qPCR in MDA-MB-231 cells with c-Myc overexpressed. (d) Immunoblotting for the protein levels of c-Myc in MDA-MB-231 cells with the proteasome inhibitor MG132 and autophagy inhibitors chloroquine (CQ) and 3-methyladenine (3MA) treated. (e) Co-immunoprecipitation of c-Myc and PHB2 with or without the LacRNA overexpressed. (f) Representative images and quantitative of transwell migration assay in the BT-549 cells with c-Myc overexpressed, Mean  $\pm$  SEM; n=3 independent experiments. ns, not significant. (g) Representative images and quantitative of the transwell migration rescue assays in LacRNA activated BT549 cells with additional c-Myc overexpressed, Mean  $\pm$  SEM; n=3 independent experiments. ns, not significant, \*\* $p$ <0.01. (h) Immunoblotting of the expression of PHB2 and c-Myc in orthotopic transplanted tumors in mice. (i) Confocal microscopy imaging of co-immunostaining of PHB2-GFP (green), c-Myc-mCherry (red) and merged with DAPI (blue) in MDA-MB-231 cell overexpressing PHB2-GFP and c-Myc-mCherry.



**Figure S8.** The correlation of LacRNA and PHB2, c-Myc and its downstream pathways in RNA-seq data for 1,094 breast cancer patients from the TCGA database. linear regression analysis.

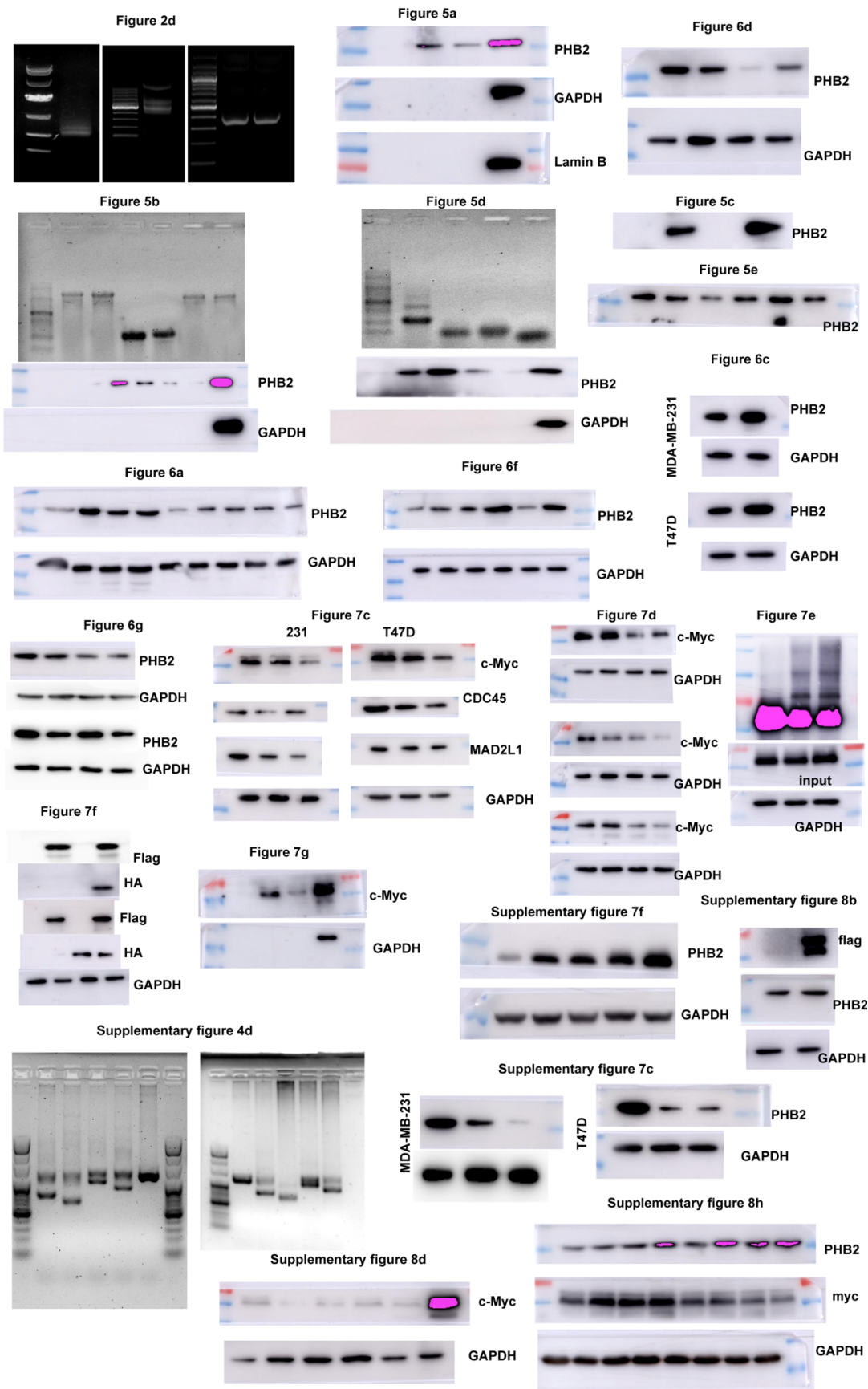


Figure S9. The uncropped original scans of blots.

## Additional Tables

**Table S1: Long non-coding RNAs differentially expressed in primary BC and positive lymph node.**

LincRNA ID	LncRNA	Description	Chromosome Cytoband	Start~ End	Strand	log2 Fold change	P_value	style
ENSG00000230838	LINC01614	long intergenic non-protein coding RNA 1614	chr2 q35	216582766~216584147	+	1.9468742	0.0024375	down
ENSG00000249835	VCAN-AS1	VCAN antisense RNA 1 (non-protein coding)	chr5 q14.3	82837296~82877139	-	1.634395	0.0007848	down
ENSG00000231106	LINC01436	long intergenic non-protein coding RNA 1436	chr21 q22.12	37377636~37379899	+	1.363169	0.0148049	down
ENSG00000215386	LINC00478	long intergenic non-protein coding RNA 478	chr21 q21.1	17442842~17982094	+	0.9276386	0.044495	down
ENSG00000214548	MEG3	maternally expressed 3 (non-protein coding)	chr14 q32	101245747~101327368	+	0.9266954	0.0072912	down
ENSG00000261742	LINC00922	long intergenic non-protein coding RNA 922	chr16 q21	65318402~65610203	-	0.6800536	0.0087496	down
ENSG00000247982	LINC00926	long intergenic non-protein coding RNA 926	chr15 q21.3	57592563~57599967	+	-0.7379656	0.043048	up
ENST00000427859	CHRM3-AS2	CHRM3 antisense RNA 2 (non-protein coding)	chr1 q43	239867192~239882419	-	-0.9022458	0.0412862	up
ENST00000499452	LINC02273	long intergenic non-protein coding RNA 2273	chr4 q31.3	153021906~153025872	+	-1.0046252	0.0361784	up
ENSG00000256039	LINC02446	long intergenic non-protein coding RNA 2446	chr12 p13.2	10705962~10710648	+	-1.1876758	0.0428353	up

**Table S2: Sequences for the primers, PCR, sgRNAs and shRNA.**

Primer name or Sequences of PCR, sgRNAs and shRNA primers	Sequence (5'→3')	Application
groupA-F (AF)	AAGGCCCAACCAGTTCTTCA TC	qPCR analysis
groupA-R (AR)	TTTCTGCA TCCGTGCGACAA	qPCR analysis
groupB-F (BF)	ACTGAAATGGAACAGGGGCA	qPCR analysis
groupB-R (BR)	AGTTTTCTGCATCCGTGCGA	qPCR analysis
groupC-F (CF)	TACTACTGGGCTCTCAACGTG	qPCR analysis
groupC-R (CR)	AAGTTTTCTGCATCCGTGCG	qPCR analysis
NR_136544-45-F	TCTGTGTGCTTAGGGAGGAAAC	qPCR analysis
NR_136544-45-R	CTGAAATGGTTTTCTCCTATGATCACT	qPCR analysis
NR_136545-F	TCTGTGTGCTTAGGGAGGAAAC	qPCR analysis
NR_136545-R	TGTTGACTCATGGCCTAGGGAAA	qPCR analysis
semi-quantitative rt-PCR TSS5-F	TGGGCTCTCAACGTGGTGTGGAAGGTAG	semi-quantitative rt-PCR analysis
semi-quantitative rt-PCR TSS5-R	GGCTGCTGCCTTTGAGGTGCTCTTGT	semi-quantitative rt-PCR analysis
LINC00478-5' RACE	GGCTGCTGCCTTTGAGGTGCTCTTGT	5'RACE
LINC00478-3' RACE-1	GAGAGCTTGTACACTGGGCTCTCAACGTGG	3'RACE
LINC00478-3' RACE-2	GTGGAACACCAGCCAAGTCCTGGGC	3'RACE
pWPXL-LINC00478-F-BamHI	TTAAACTACGGGATCCGATTTTCAGCCAGGCAGCTAG	PCR for vector construction
pWPXL-LINC00478-R-MluI	TAGCGCTAGGACGCGTTTTTCTGTTATTTCTTCTTTATTTCTA	PCR for vector construction
pWPXL-LacRNA-R-MluI-1	TAGCGCTAGGACGCGTCTCTTCCATTCTGACCTCAGCC	PCR for vector construction
pWPXL-LacRNA-R-MluI-2	TAGCGCTAGGACGCGTACATATTAGCTCCCCTTTTTATTTTTTAAAAACTCTCC CA TTCTG	PCR for vector construction
pWPXL-LINC00478_3'RNA-F-BamHI	TTAAACTACGGGATCCGCTAATATGTGAGGAACTGATTGCTG	PCR for vector construction
pcDNA3.1-LINC00478-F-NotI	AAGGAAAAAAGCGGCCGCGATTTTCAGCCAGGCAGCTAG	PCR for vector construction
pcDNA3.1-LINC00478-R-BamHI	TTAAACTACGGGATCCTTTTCTGTTATTTCTTCTTTATTTCTA	PCR for vector construction
pcDNA3.1- LacRNA-R-BamHI	TTAAACTACGGGATCCCATATTAGCTCCCCTTTTTATTTTTTAAAAACTC	PCR for vector construction
pcDNA3.1- LINC00478_3'RNA -F- NotI	AAGGAAAAAAGCGGCCGCGAGCTAATATGTGAGGAACTG	PCR for vector construction
LacRNA-Northern Probe-F	AACATCTGACCGCACCCCTTT	Northern Blotting
LacRNA-Northern Probe-R	GATCACTAATACGACTCACTATAGGGCTTTGCAGCTCAGTAGTAAAATGCTC	Northern Blotting
LINC00478_3'RNA-Northern-F	CCAACCATGCCTGCTAGTGA	Northern Blotting
LINC00478_3'RNA-Northern-R	GATCACTAATACGACTCACTATAGGGGGCTTCACATAGGTTGGGCT	Northern Blotting
LacRNA-sgRNA-1	AACAGTCCAGATTTACCATG	CRISPR/Cas9 and CRISPR/dead-Cas9
LacRNA-sgRNA-2	TAGCTCAACAAATCCCAACC	CRISPR/Cas9 and CRISPR/dead-Cas9

LacRNA-sgRNA-3	TCTGATTTTTGCAAAGCTCG	CRISPR/Cas9 and CRISPR/dead-Cas9
LacRNA-sgRNA-4	TGAACTGCACAGGCCATGGT	CRISPR/Cas9 and CRISPR/dead-Cas9
LINC00478-FL-sense-Pulldown-F	TAATACGACTCACTATAGGGAGAGATTTTCAGCCAGGCAGCTAG	<i>In vitro</i> transcription
LINC00478-FL-sense-Pulldown-R	TTTTCTGTTATTTCTTCTTTATTCTA	<i>In vitro</i> transcription
LINC00478-FL-antisense-Pulldown-F	TAATACGACTCACTATAGGGAGATTTTCTGTTATTTCTTCTTTATTCTATTTTTATTCT	<i>In vitro</i> transcription
LINC00478-FL-antisense-Pulldown-R	GGATCCGATTTTCAGCCAGGCAGCTAG	<i>In vitro</i> transcription
LacRNA-sense-Pulldown-R	ACATATTAGCTCCCCTTTTAT	<i>In vitro</i> transcription
LacRNA-antisense-Pulldown-F	AATACGACTCACTATAGGGAGAACATATTAGCTCCCCTTTTAT	<i>In vitro</i> transcription
LacRNA-#1-Pulldown-R	CTTTTTTTTTTTTTAATAGCAAAAAGGGTGCG	<i>In vitro</i> transcription
LacRNA-#2-Pulldown-F	TAATACGACTCACTATAGGGAGAGCTTCTATTTTTTTCCTCCTG	<i>In vitro</i> transcription
LacRNA-#2-Pulldown-R	TAAAGTTTTTCCCTTTCAGCTCAGTAG	<i>In vitro</i> transcription
LacRNA-#3-Pulldown-F	TAATACGACTCACTATAGGGAGAATGGATATGAAAAGTGAAGAAAG	<i>In vitro</i> transcription
LacRNA-Δ1-Pulldown-R	GGTCTCCCTATAGTGAGTCGTATTAATTTTCG	<i>In vitro</i> transcription
LacRNA-Δ1-Pulldown-F	GAGCTCAGAGCCGAAAGCAAACAG	<i>In vitro</i> transcription
LacRNA-Δ2-Pulldown-R	TGCACCCACCATGGCCTGTGCAGTTC	<i>In vitro</i> transcription
LacRNA-Δ2-Pulldown-F	TTCAGGGGAGATTGGCAGCTGGGTC	<i>In vitro</i> transcription
LacRNA-Δ3-Pulldown-R	GCCGTGCGCCAGACTAAACTCAC	<i>In vitro</i> transcription
LacRNA-Δ3-Pulldown-F	GCTTCTGCTAGTGTTAGGTACTAGTGCAGTGT	<i>In vitro</i> transcription
LacRNA-Δ4-Pulldown-R	TGCCTGGGAAGGGAGCCAATGGAAG	<i>In vitro</i> transcription
LacRNA-Δ4-Pulldown-F	GCTTCTATTTTTTTCCTCCTGTCGTTAAGA	<i>In vitro</i> transcription
PHB2-FL-F-HindIII	CCCAAGCTTATGGCCAGAAGTTGAAGGACT	PCR for vector construction
PHB2-FL-R-KpnI	CGGGGTACCTTTCTTACCCTTGATGAGGCTGTCCAC	PCR for vector construction
PHB2-N201-R-KpnI	CGGGGTACCTTGTTGGCTTCTACAGCAGCTG	PCR for vector construction
PHB2-ΔN39-F- HindIII	CCCAAGCTTATGTCTGTGTTACCGTGGAAGGCG	PCR for vector construction
PHB2-N39-R-KpnI	CGGGGTACCGTAGGCCACGGCGCCGCCCCAGCAACA	PCR for vector construction
PHB2-ΔN188-F- HindIII	CCCAAGCTTATGAGCTTTAGCCGAGAGTACACAG	PCR for vector construction
hsa-miR-125b-5p-F	TCCCTGAGACCCTAAGTTGTGA	qPCR analysis
hsa-miR-99a-5p-F	AACCCGTAGATCCGATCTTGTG	qPCR analysis
hsa-let7c-F	TGAGGTAGTAGGTTGTATGGTT	qPCR analysis
c-Myc-CDS-F-HindIII	CCCAAGCTTATGCCCCCAACGTTAGCTTCAC	PCR for vector construction
c-Myc-CDS-R-KpnI	CGGGGTACCCGCACAAGAGTTCCGTAGCTGTT	PCR for vector construction
c-Myc-CDS-F-EcoRI	CCGGAATTCATGCCCTCAACGTTAGCTTCAC	PCR for vector construction
c-Myc-RT-F	AATGAAAAGGCCCCCAAGGTAG	qPCR analysis
c-Myc-RT-R	GTCGTTTCCGCAACAAGTCCT	qPCR analysis
CCNA2-RT-F	TGATGTTGGGCAACTCTGCG	qPCR analysis

CCNA2-RT-R	GTGCAACCCGTCTCGTCT	qPCR analysis
CDC20-RT-F	CGCTATATCCCCCATCGCAG	qPCR analysis
CDC20-RT-R	CTGATAACCCTCTGGCGCAT	qPCR analysis
CDC45-RT-F	GTGATTTGGCGGGAGTCTTG	qPCR analysis
CDC45-RT-R	CGAAGAGAAGGACCCTCTGG	qPCR analysis
MAD2L1-RT-F	CGTGGCCGAGTTCTTCTCATT	qPCR analysis
MAD2L1-RT-R	TACAAGCAAGGTGAGTCCGT	qPCR analysis
APEX1-RT-F	TGAAGCCTTTCGCAAGTTCCT	qPCR analysis
APEX1-RT-R	ATGTGCCACATTGAGGTCTCC	qPCR analysis
POLB2-RT-F	CCACCCGCCTCATCCAAAT	qPCR analysis
POLB2-RT-R	CCAAGACCAGCTCGTCATCTG	qPCR analysis
PCNA-RT-F	ACACTAAGGGCCGAAGATAACG	qPCR analysis
PCNA-RT-R	ACAGCATCTCCAATATGGCTGA	qPCR analysis
CDKN1A-RT-F	GTCACTGTCTTGTACCCTTGTG	qPCR analysis
CDKN1A-RT-R	GGGCTTCCTCTTGGAGAAGAT	qPCR analysis
RAN-RT-F	ATGTAGCCACCTTGGGTGTTG	qPCR analysis
RAN-RT-R	GGGGATGTTTTACACACTCG	qPCR analysis
CCT2-RT-F	GAACGCCTAGCTCTTGTCAACA	qPCR analysis
CCT2-RT-R	GCACCACGCAAAACAATGGTA	qPCR analysis
VBP1-RT-F	AGTCCACCAACTCAATGGAGA	qPCR analysis
VBP1-RT-R	CAAGCATTACATTAGCCCCCAA	qPCR analysis
PSMA7-RT-F	ACCGCCGATGCAAGGATAG	qPCR analysis
PSMA7-RT-R	CTGCGTATAACGCTGCTTCAG	qPCR analysis
RFC4-RT-F	CCGCTGACCAAGGATCGAG	qPCR analysis
RFC4-RT-R	AGGGAACGGGTTTGGCTTTC	qPCR analysis
PHB2-siRNA-1	GCGAGTGTTGTCTCGACCCAA	PHB2 knockdown
PHB2-siRNA-2	GCTGAGCTTTAGCCGAGAGTA	PHB2 knockdown
c-Myc-siRNA-1	CCTGAGACAGATCAGCAACAA	c-Myc knockdown
c-Myc-siRNA-2	CAGTTGAAACACAAACTTGAA	c-Myc knockdown

---



**Table S3: Antibodies for Immunoblotting, RIP and IP.**

<b>Protein Name</b>	<b>Company</b>	<b>Catalog Number</b>	<b>Dilutions in IB</b>	<b>Dilutions in RIP/IP</b>
PHB2	Proteintech	12295-1-AP	1:1000	5µg
HRP-conjugated GAPDH	Proteintech	HRP-60004	1:10000	N/A
Lamin B1	Proteintech	12987-1-AP	1:1000	5µg
c-Myc	abcam	ab32072	1:1000	5µg
CDC45	Proteintech	15678-1-AP	1:1000	N/A
MAD2L1	Proteintech	10337-1-AP	1:1000	N/A
FLAG	sigma	F7425	1:1000	5µg
HA	sigma	H3663	1:1000	5µg
His	Proteintech	66005-1-Ig	1:5000	5µg
Goat Anti-Rabbit IgG, Fc fragment specific	Jackson			N/A
Goat Anti-Rabbit IgG, F(ab') <sub>2</sub> fragment specific	Jackson			N/A
Goat Anti-Mouse IgG, F(ab') <sub>2</sub> fragment specific	Jackson			N/A
Goat Anti- Mouse IgG, Fc fragment specific	Jackson			N/A

Abbreviations: IB: Immunoblotting; RIP: RNA immunoprecipitation; IP: immunoprecipitation.

**Table S4: RNA-seq analysis of the gene expression profile affected by LacRNA activated with two sgRNA.**

Gene ID	Signal Intensity (FPKM)			FC_(OE1/Ctrl)	FC_(OE2/Ctrl)
	Ctrl-dcas9-vector	LacRNA-OE-1	LacRNA-OE-2		
<i>BBX</i>	1.31210123	2.609767006	2.84216971	1.988998216	2.166120757
<i>COL13A1</i>	4.345154438	7.50817572	10.67766634	1.7279422	2.457373264
<i>SPDEF</i>	0.133530069	0.071337505	0.035642441	0.534242999	0.266924455
<i>BIK</i>	0.35757475	0.071636928	0.071584084	0.200341125	0.200193341
<i>FBXO48</i>	0.125328701	0.426844378	0.125449857	3.405799119	1.000966706
<i>HTRID</i>	0.240401225	0.457541392	0.794090955	1.903240684	3.303190131
<i>BOC</i>	0.933763463	2.435593954	2.096584435	2.608362878	2.24530571
<i>CIS</i>	0.727361231	1.57863731	2.572494128	2.170362184	3.536749029
<i>CIR</i>	13.74067487	33.69966596	38.07607368	2.452548094	2.771048296
<i>BSN</i>	0.069309619	0.132446946	0.153695898	1.910946112	2.217526242
<i>CRISPLD1</i>	0.64942067	1.89244607	1.780738835	2.914052722	2.742042129
<i>IGF1R</i>	2.449922934	5.148423374	5.601003671	2.101463398	2.286195861
<i>ENPP5</i>	0.132251774	0.264954691	0.405964175	2.003411247	3.069631233
<i>CA4</i>	1.528734137	3.730904945	3.283000236	2.440519155	2.14752857
<i>CA6</i>	0.249099954	0.149714895	0.049868152	0.601023374	0.200193341
<i>CA9</i>	3.41804508	1.286546961	0.870888919	0.376398477	0.254791525
<i>CCK</i>	1.20150159	0.275097348	0.824683261	0.228961285	0.68637717
<i>TBX15</i>	0.1894095	0.624009314	0.589843656	3.294498495	3.114118642
<i>BCAM</i>	2.358862576	4.695924835	5.905342672	1.990758123	2.503470415
<i>CFH</i>	0.309639632	1.191044202	1.024864838	3.846549594	3.309863242
<i>CFI</i>	0.076371299	0.183603744	0.244624409	2.404093496	3.20309346
<i>ZNF559-ZNF177</i>	0.14988069	0.360327192	0.288049115	2.404093496	1.921856076
<i>STON1</i>	0.226856517	0.327230567	0.593424812	1.442456098	2.615859659
<i>EDARADD</i>	0.176808407	0.047229327	0.117986219	0.2671215	0.667311138
<i>PLIN4</i>	0.013074307	0.041909142	0.041878227	3.205457995	3.20309346
<i>DIO2</i>	0.040109315	0.085712482	0.096355412	2.136971996	2.402320095
<i>DIO3</i>	2.148042703	9.061526052	16.38958809	4.218503682	7.630010365
<i>COL14A1</i>	0.088476889	0.28360895	0.451668341	3.205457995	5.104930202
<i>CPZ</i>	0.06708046	0.107511798	0.214864983	1.602728997	3.20309346
<i>SAPCD1</i>	0.093004568	0.149061118	0.372377904	1.602728997	4.003866825
<i>MAB21L3</i>	0.026383457	0.084571065	0.04225434	3.205457995	1.60154673
<i>MAB21L1</i>	0.029305877	0.046969379	0.093869463	1.602728997	3.20309346
<i>IL1R2</i>	0.290559973	0.139706668	0.093069075	0.480818699	0.320309346
<i>TCEAL8</i>	3.022494984	0.90125402	1.688604753	0.298182139	0.558679092
<i>LOC101927989</i>	0.119316785	0.286848706	0.286637109	2.404093496	2.402320095
<i>SVOP</i>	0.294443033	0.098315081	0.098242558	0.333901874	0.333655569
<i>C3orf58</i>	0.273866953	0.736782921	0.657916084	2.690295103	2.402320095
<i>LOC101927680</i>	0.033382517	0.053503129	0.133659154	1.602728997	4.003866825
<i>HLA-DMB</i>	0.243928945	0.244344996	0.732494259	1.001705623	3.002900119
<i>TTL9</i>	0.385009871	0.308533242	0.056055573	0.801364499	0.145595157
<i>HLA-DOB</i>	0.186280286	0.447835224	0.298336583	2.404093496	1.60154673
<i>MB</i>	0.291255331	0.816905887	1.399377067	2.804775745	4.80464019
<i>DSP</i>	0.639160272	1.66289703	1.269039403	2.601690222	1.985479165

<i>SH2D3C</i>	0.027010838	0.303037377	0.194666039	11.21910298	7.206960285
<i>COL15A1</i>	0.942739036	6.232690157	7.222070966	6.611257114	7.660731859
<i>LOC102724752</i>	0.07433873	0.297862094	0.357170848	4.006822493	4.80464019
<i>LINGO1</i>	0.02449459	0.03925819	0.058843846	1.602728997	2.402320095
<i>LINGO3</i>	0.159985322	0.064103279	0.064055993	0.400682249	0.400386683
<i>LOC102724705</i>	0.139202915	0.223104549	0.445879948	1.602728997	3.20309346
<i>EFS</i>	0.109220749	0.240695485	0.2623832	2.203752371	2.402320095
<i>EGF</i>	0.01521289	0.02438214	0.060910386	1.602728997	4.003866825
<i>SWT1</i>	0.132663666	0.194905246	0.371817356	1.469168248	2.802706778
<i>GPR161</i>	0.679478448	1.683030618	1.904378851	2.476944814	2.802706778
<i>SLC16A11</i>	0.047250241	0.113593997	0.113510203	2.404093496	2.402320095
<i>SLC16A14</i>	0.135594654	0.217321484	0.341253275	1.602728997	2.51671629
<i>EN2</i>	0.125467134	0.040217963	0.080376591	0.320545799	0.640618692
<i>GPR155</i>	0.067666548	0.099413544	0.189649493	1.469168248	2.802706778
<i>F10</i>	0.166390985	0.488912703	0.399724406	2.938336495	2.402320095
<i>COL16A1</i>	0.2288472	0.048904006	0.073301897	0.2136972	0.320309346
<i>EPX</i>	0.054909561	0.022001286	0.021985057	0.400682249	0.400386683
<i>F2R</i>	2.057134107	5.053054524	5.980408686	2.456356398	2.907155477
<i>STRA6</i>	10.95524695	15.66129057	28.94099413	1.429569834	2.641747307
<i>ADRA2C</i>	0.043509798	0.069734415	0.104524462	1.602728997	2.402320095
<i>MEST</i>	1.666433942	4.823867697	3.948840975	2.894724822	2.369635468
<i>AKAP9</i>	0.108129061	0.259952373	0.22729054	2.404093496	2.102030083
<i>C17orf104</i>	0.036391364	0.087488243	0.058282471	2.404093496	1.60154673
<i>HIST1H3J</i>	0.178226327	0.285648502	0.570875582	1.602728997	3.20309346
<i>NHLH1</i>	0.033291201	0.053356774	0.079976122	1.602728997	2.402320095
<i>HIST1H3F</i>	0.548447538	0.293004257	0.14639406	0.534242999	0.266924455
<i>HIST1H3G</i>	0.729697509	2.046637875	1.314725242	2.804775745	1.801740071
<i>HIST1H4I</i>	0.460498293	0.184513492	0.184377384	0.400682249	0.400386683
<i>HIST1H4E</i>	0.903895854	3.259575214	0.904769655	3.606140244	1.000966706
<i>ANKRD6</i>	0.029694034	0.095182979	0.083223671	3.205457995	2.802706778
<i>AKAP7</i>	0.116144764	0.255954298	0.395273941	2.203752371	3.403286801
<i>GLTPD2</i>	0.365631692	1.17201703	0.695371786	3.205457995	1.901836742
<i>TGFB2</i>	0.271859506	0.607710711	1.054115913	2.235385181	3.877428925
<i>FES</i>	0.029745874	0.071511863	0.047639408	2.404093496	1.60154673
<i>PALM3</i>	0.492237135	1.577845461	1.632991604	3.205457995	3.317489655
<i>PALMD</i>	0.264366747	0.37074472	0.952640323	1.402387873	3.603480143
<i>DYX1C1</i>	0.085491404	0.205529329	0.376525816	2.404093496	4.404253508
<i>RGS11</i>	0.176381334	0.282691478	0.621462486	1.602728997	3.523402806
<i>FRS3</i>	0.703744523	1.347227928	1.565388527	1.914370747	2.224370458
<i>MFI2</i>	2.579627076	5.52981767	7.38486554	2.143650034	2.86276478
<i>OLR1</i>	0.033860169	0.217074696	0.081342963	6.410915989	2.402320095
<i>FRY</i>	0.02384777	0.08918353	0.044558871	3.739700994	1.868471185
<i>LOC102724549</i>	0.344442793	0.184016151	0.091940205	0.534242999	0.266924455
<i>DLX4</i>	0.974835939	2.037910208	2.172167388	2.090516084	2.228238929
<i>SLC14A1</i>	0.019548459	0.062661764	0.26611605	3.205457995	13.61314721
<i>LOC102724560</i>	0.112341342	0.300087877	0.359839817	2.671214996	3.20309346
<i>COMMD10</i>	4.905729708	1.917696404	2.826515652	0.390909512	0.576166202
<i>FYB</i>	0.123110093	0.394624231	0.492916416	3.205457995	4.003866825
<i>FYN</i>	1.150611088	2.427461126	3.140209081	2.109714701	2.729166367

<i>ATP6V1G2</i>	0.797182011	1.320255615	2.127873737	1.656153297	2.66924455
<i>ZNF585B</i>	0.493867734	0.901471714	1.296282863	1.825330247	2.624757141
<i>GK5</i>	0.351066693	0.850248984	0.737171848	2.421901596	2.099805713
<i>ADPRH</i>	0.123861855	0.238220385	0.376904044	1.923274797	3.042938787
<i>GRTP1</i>	1.068910718	2.455549691	1.883101511	2.297244896	1.761701403
<i>TIMP3</i>	0.124232132	0.186666037	0.348186237	1.502558435	2.802706778
<i>TMSB15B</i>	1.53499431	0.205014991	0.40972752	0.13356075	0.266924455
<i>MGLL</i>	0.422106901	0.147070211	0.146961723	0.348419347	0.348162333
<i>KALI</i>	0.026985171	0.216249579	0.194481054	8.013644987	7.206960285
<i>RAB38</i>	0.295806195	0.039508097	0.236873722	0.13356075	0.800773365
<i>LOC102724620</i>	0.383748577	0.922567459	1.434046319	2.404093496	3.73694237
<i>RAB17</i>	0.127852202	0.614737296	0.341268794	4.808186992	2.66924455
<i>RALGPS1</i>	0.184827302	0.370285095	0.401727261	2.003411247	2.173527705
<i>VAV3</i>	1.500554303	3.335480841	3.318715585	2.222832478	2.21165977
<i>FAIM3</i>	0.745362597	0.265469833	0.110530836	0.356161999	0.148291364
<i>DNMI</i>	3.857595723	7.381009054	8.191215037	1.913370292	2.123399035
<i>FLJ22184</i>	0.075424687	0.151106667	0.317089923	2.003411247	4.204060166
<i>FIGNL2</i>	0.090745829	0.058176389	0.014533369	0.641091599	0.160154673
<i>SH3BGRL2</i>	0.293386773	0.74941231	0.528606705	2.55434934	1.801740071
<i>SRSF12</i>	0.045302943	0.127064596	0.14510956	2.804775745	3.20309346
<i>LOC102724369</i>	0.121877231	0.586008515	0.4879802	4.808186992	4.003866825
<i>GPR64</i>	0.017364897	0.027831224	0.069526735	1.602728997	4.003866825
<i>SH2D6</i>	0.285879813	0.610917154	0.610466506	2.136971996	2.13539564
<i>SLC12A8</i>	5.655207669	11.20328074	13.70223378	1.981055585	2.422940868
<i>PPP1R3G</i>	0.392590711	0.275282226	0.078594046	0.701193936	0.200193341
<i>PPP1R36</i>	0.060635007	0.388725933	0.097109796	6.410915989	1.60154673
<i>PPP1R1B</i>	0.046199666	0.296182178	0.850895627	6.410915989	18.4177874
<i>HNF4G</i>	0.062320544	0.033294315	0.016634877	0.534242999	0.266924455
<i>KIF1A</i>	0.046119632	0.199576633	0.413631376	4.327368293	8.968661688
<i>DOK6</i>	0.086178449	0.191834304	0.222363643	2.226012496	2.580269732
<i>DOK7</i>	0.099601151	0.026605609	0.053171966	0.2671215	0.53384891
<i>IL7</i>	0.287256883	0.460394936	0.690082983	1.602728997	2.402320095
<i>VCAN</i>	0.102922259	0.599341908	0.642855746	5.82324869	6.246032247
<i>TASIR3</i>	0.532659221	0.346819029	0.159952244	0.651108655	0.300290012
<i>MAPK13</i>	0.026840638	0.107545671	0.085973071	4.006822493	3.20309346
<i>SERPINA3</i>	3.375539374	8.587420375	23.29764791	2.544014282	6.901903765
<i>SERPINB3</i>	0.143824734	0.345768108	0.268732371	2.404093496	1.868471185
<i>SEMA5B</i>	0.086349264	0.207591705	0.15212162	2.404093496	1.761701403
<i>CHRM4</i>	0.058032823	0.418548997	0.929422779	7.212280488	16.0154673
<i>ANKRD36B</i>	0.02846381	0.091239548	0.034189592	3.205457995	1.201160048
<i>RHOBTB1</i>	0.093146932	0.238862863	0.25360458	2.564366396	2.722629441
<i>SLC37A2</i>	0.548186123	0.113891788	0.162582536	0.207761166	0.296582728
<i>SYCP2</i>	0.045925706	0.085874204	0.159363022	1.869850497	3.470017915
<i>SEMA3A</i>	0.029105632	0.05831055	0.104881566	2.003411247	3.603480143
<i>SEMA3B</i>	0.116382765	0.326427557	1.281448006	2.804775745	11.01063377
<i>SEMA4D</i>	0.655744843	1.780829382	1.225240344	2.715735246	1.868471185
<i>SYCP3</i>	0.057953867	0.278653028	0.092815826	4.808186992	1.60154673
<i>SRPK3</i>	0.085107077	0.204605371	0.272605922	2.404093496	3.20309346
<i>SYDE2</i>	0.108502039	0.173899364	0.275137552	1.602728997	2.535782323

<i>OPN3</i>	4.175452797	1.685999042	1.477400845	0.403788313	0.353830092
<i>SIPR3</i>	3.785025272	6.548568381	9.761205036	1.730125405	2.578900888
<i>SIPR2</i>	0.499172954	0.990524437	1.389518174	1.98433114	2.783640745
<i>SIPR5</i>	1.056383084	2.048099759	2.510482458	1.938785077	2.376488696
<i>ATAD5</i>	0.204624942	0.579393046	0.404183568	2.831487895	1.975240967
<i>KMT2C</i>	0.658586724	1.407381387	1.294475009	2.136971996	1.965534623
<i>SGSM1</i>	0.013794071	0.022108158	0.033137775	1.602728997	2.402320095
<i>KMO</i>	0.016177779	0.051857191	0.025909469	3.205457995	1.60154673
<i>WDR86</i>	0.057620686	0.138525516	0.207634998	2.404093496	3.603480143
<i>WDR52</i>	0.041520706	0.113128947	0.139644436	2.724639295	3.363248133
<i>WDR31</i>	0.161111506	0.272563532	0.43004601	1.691769497	2.66924455
<i>LOC102724232</i>	1.143519251	0.458187866	0.457849879	0.400682249	0.400386683
<i>WDR17</i>	0.045308966	0.108926992	0.099776087	2.404093496	2.202126754
<i>ADTRP</i>	0.917031046	0.404181869	0.367167018	0.440750474	0.400386683
<i>LBH</i>	0.405953226	1.231555335	0.882350584	3.033737031	2.173527705
<i>WDR96</i>	0.03171712	0.139793357	0.101592899	4.407504743	3.20309346
<i>IFITM1</i>	2.613986126	5.808186207	15.6990785	2.221965201	6.005800238
<i>HS6ST3</i>	1.047981764	1.478424993	2.762353116	1.41073542	2.635878993
<i>TMEM74B</i>	0.04362119	0.139825892	0.069861374	3.205457995	1.60154673
<i>DOCK11</i>	0.969833133	2.259986253	1.982415909	2.330283608	2.044079379
<i>GPSM3</i>	0.516316268	0.183892234	0.229695731	0.356161999	0.444874092
<i>LXN</i>	0.30534833	0.734085935	2.200633291	2.404093496	7.206960285
<i>HLA-DPA1</i>	0.576922241	0.115581251	0.346487973	0.200341125	0.600580024
<i>NSUN7</i>	0.069112102	0.239997268	0.092238551	3.472579494	1.334622275
<i>FAM227A</i>	0.033013828	0.152122633	0.072700635	4.607845867	2.202126754
<i>FSCN2</i>	0.206401415	0.330805534	0.557822551	1.602728997	2.702610107
<i>DSC2</i>	0.097455311	0.260324088	0.325165072	2.671214996	3.336555688
<i>DSC3</i>	0.036626047	0.078268836	0.068434713	2.136971996	1.868471185
<i>MDK</i>	91.06001321	176.3641459	189.8663738	1.936790252	2.085068595
<i>ME3</i>	1.73109929	0.47225243	0.796338117	0.272804936	0.460018742
<i>MGP</i>	89.76121512	191.4618716	322.5728017	2.133013366	3.59367686
<i>COL9A3</i>	0.137130276	0.274728338	0.46669366	2.003411247	3.403286801
<i>MKX</i>	0.069810585	0.279718623	0.260878134	4.006822493	3.73694237
<i>MSC</i>	0.206978096	0.497594694	0.43093062	2.404093496	2.082010749
<i>HS3ST3B1</i>	0.109889951	0.264185715	0.263990837	2.404093496	2.402320095
<i>DYNLT3</i>	0.807326655	1.447964631	2.001027112	1.793530068	2.478584225
<i>MMP3</i>	1.677745422	0.597549164	0.522469829	0.356161999	0.311411864
<i>MX1</i>	3.181966611	1.454248443	1.393456154	0.457028191	0.437922934
<i>NKX2-6</i>	0.282093325	1.507063841	0.978868892	5.342429991	3.470017915
<i>FZD1</i>	3.211843266	5.006466079	9.942815333	1.558751677	3.095672643
<i>CDK18</i>	0.476902812	2.223551902	3.298150148	4.662484356	6.915769971
<i>WNT10A</i>	0.179351967	0.02874526	0.057448111	0.1602729	0.320309346
<i>DNAH10</i>	0.024156003	0.062912731	0.058030452	2.604434621	2.402320095
<i>DNAH14</i>	0.08519827	0.151180067	0.214419873	1.774449961	2.51671629
<i>BNC1</i>	0.143542012	0.07189342	0.014368078	0.500852812	0.100096671
<i>DTNA</i>	0.175421471	0.572347337	0.431452298	3.262698316	2.459518193
<i>NMU</i>	0.522010933	0.083664206	0.08360249	0.1602729	0.160154673
<i>NOG</i>	6.979275132	3.500100012	1.58650307	0.501499073	0.22731631
<i>NPY</i>	0.608515601	1.828660499	3.410981601	3.00511687	5.605413555

<i>COL3A1</i>	36.01658643	72.77158344	76.09781903	2.020501959	2.112854842
<i>CDKL5</i>	0.0252222	0.14148523	0.114451174	5.609551491	4.537715735
<i>TBX1</i>	0.693109387	2.149285209	1.206572904	3.100932191	1.740811663
<i>TBX6</i>	0.121356388	0.259335202	0.453501827	2.136971996	3.73694237
<i>HSD17B3</i>	0.217697234	0.581516116	0.929739448	2.671214996	4.27079128
<i>TEKT2</i>	0.046655084	0.22432637	0.410961639	4.808186992	8.808507015
<i>ODF3B</i>	0.242195264	0.58226006	0.533344671	2.404093496	2.202126754
<i>CHI3L1</i>	2.550664197	6.949639902	3.825052857	2.724639295	1.49963012
<i>DHRS3</i>	82.19998505	205.9403872	313.8513828	2.505357965	3.818144037
<i>DHRS9</i>	0.059491749	0.166861014	0.285836447	2.804775745	4.80464019
<i>TRPC6</i>	0.018471853	0.059210748	0.05916707	3.205457995	3.20309346
<i>NPIPB4</i>	0.015355477	0.036916001	0.024592513	2.404093496	1.60154673
<i>NPIPB5</i>	0.669574411	1.609719486	1.090227287	2.404093496	1.628239176
<i>PPL</i>	0.355081242	0.569099003	1.038933158	1.602728997	2.92590268
<i>PSD</i>	0.061069666	0.195756249	0.146708886	3.205457995	2.402320095
<i>PTGER1</i>	0.539570484	1.056959763	1.392237388	1.958890997	2.580269732
<i>PTGER2</i>	0.034351687	0.11011289	0.385110826	3.205457995	11.21082711
<i>MPP7</i>	0.032722176	0.340891068	0.288233513	10.41773848	8.808507015
<i>TRPV2</i>	0.606781939	0.121563376	0.194357926	0.200341125	0.320309346
<i>TRPV4</i>	0.544434631	1.270933443	1.156264949	2.334409627	2.123790229
<i>TDO2</i>	0.100049541	0.280616526	0.600877557	2.804775745	6.005800238
<i>AGAP2</i>	2.716774359	4.535680255	6.345268258	1.669509372	2.335588981
<i>WFIKKN1</i>	0.043733154	0.140184788	0.07004069	3.205457995	1.60154673
<i>TMEM40</i>	9.382572808	3.032817783	4.35645961	0.323239462	0.464313968
<i>TRMT10A</i>	0.160566852	0.441163115	0.385732976	2.747535424	2.402320095
<i>PLXDC2</i>	0.229235329	0.545536466	0.461695161	2.379809723	2.014066342
<i>TMEM56</i>	0.237269349	0.610447011	0.529997141	2.572801812	2.233736229
<i>SESN3</i>	0.063152101	0.144593862	0.245628242	2.289612853	3.88947063
<i>TMEM17</i>	0.840857922	0.425579171	0.177193849	0.506124947	0.210729833
<i>KIF21A</i>	0.064141081	0.123360925	0.154087409	1.923274797	2.402320095
<i>KIF21B</i>	0.068565138	0.151100586	0.130399699	2.203752371	1.901836742
<i>ST6GAL1</i>	1.525359133	2.514988385	4.043476851	1.648784428	2.650835967
<i>RSAD2</i>	0.121287278	0.019439064	0.077698898	0.1602729	0.640618692
<i>RAMP2</i>	0.325575226	1.739362853	1.042847878	5.342429991	3.20309346
<i>STAMBPL1</i>	2.550061441	0.86043314	1.155354146	0.337416631	0.453069141
<i>FRRS1L</i>	0.573202249	0.229671966	0.286878183	0.400682249	0.500483353
<i>SCN9A</i>	0.061088434	0.223790181	0.083859412	3.663380565	1.37275434
<i>SLC30A2</i>	1.205712271	2.125673022	2.951678377	1.763001897	2.448078573
<i>SCN5A</i>	0.180322121	0.345203393	0.441213518	1.914370747	2.446807504
<i>BCL2A1</i>	0.271024976	0.072396598	0.072343194	0.2671215	0.266924455
<i>COL12A1</i>	4.429198971	11.39700272	7.399935902	2.57315212	1.670716522
<i>REL</i>	0.032867355	0.210709852	0.21055442	6.410915989	6.40618692
<i>RET</i>	0.014930281	0.047858389	0.035867314	3.205457995	2.402320095
<i>RHD</i>	0.029046091	0.139659036	0.139556015	4.808186992	4.80464019
<i>MORN3</i>	0.22070514	0.530595793	0.530204394	2.404093496	2.402320095
<i>GCSAM</i>	0.142065899	0.075897712	0.056881294	0.534242999	0.400386683
<i>C4orf36</i>	1.842898773	0.805545628	0.939109979	0.437107908	0.50958305
<i>C4orf19</i>	0.234173129	1.388669436	0.787582338	5.93009729	3.363248133
<i>KLF7</i>	1.505233659	2.882025038	3.154945629	1.91466954	2.095983976

<i>KLF9</i>	0.687033744	1.271541709	2.017247183	1.85077039	2.936169005
<i>OXTR</i>	21.09781218	37.32072022	55.43920565	1.76893793	2.627722968
<i>BCL11B</i>	0.074135416	0.01697414	0.050884857	0.228961285	0.68637717
<i>KLLN</i>	0.139430743	0.271356059	0.382808316	1.946170925	2.74550868
<i>GALNT12</i>	0.685275339	1.897082044	4.065740409	2.768350086	5.933002659
<i>COL4A1</i>	2.373695273	5.915617799	4.282003847	2.492155529	1.803939998
<i>C5AR1</i>	0.218254955	0.670456796	0.34954551	3.071897245	1.60154673
<i>NR4A3</i>	0.059721125	0.13161057	0.143469258	2.203752371	2.402320095
<i>ARAP2</i>	0.01132122	0.036289697	0.045328659	3.205457995	4.003866825
<i>AGAP9</i>	0.285520517	0.486212762	0.657332022	1.70289956	2.302223424
<i>AGAP5</i>	0.175581583	0.337691634	0.393682955	1.923274797	2.242165422
<i>UNC5A</i>	0.087872289	0.0528133	0.017591447	0.601023374	0.200193341
<i>UNC5C</i>	0.008574093	0.013741947	0.04119543	1.602728997	4.80464019
<i>ADAMTS16</i>	0.548079995	0.096077592	0.178298194	0.175298484	0.32531418
<i>ADAMTS13</i>	0.206484793	0.565354407	0.399589846	2.73799537	1.935202299
<i>SHF</i>	0.920075589	1.966175769	2.183028224	2.136971996	2.372661822
<i>MMP24</i>	0.196612472	0.063023302	0.125953625	0.320545799	0.640618692
<i>MMP28</i>	0.138242895	0.138478686	0.498155528	1.001705623	3.603480143
<i>MMP11</i>	1.846270246	3.95549268	3.771540912	2.142423456	2.042789197
<i>BMP8A</i>	0.075712926	0.02426946	0.048503116	0.320545799	0.640618692
<i>BMP8B</i>	0.022579429	0.090471762	0.126567035	4.006822493	5.605413555
<i>SP9</i>	0.117102659	0.328446697	0.56263614	2.804775745	4.80464019
<i>SPDYE5</i>	0.029175406	0.046760268	0.070088663	1.602728997	2.402320095
<i>UNC79</i>	0.009580767	0.046066121	0.030688094	4.808186992	3.20309346
<i>VMO1</i>	1.165564709	0.254738776	0.169700577	0.218553954	0.145595157
<i>RAC2</i>	1.240389181	0.316273954	0.316040651	0.254979613	0.254791525
<i>MST1</i>	0.133488223	0.406496348	0.299302679	3.045185095	2.242165422
<i>GAB2</i>	0.30480209	1.110261701	1.142725988	3.642565903	3.7490753
<i>CNKSR1</i>	0.077612072	0.041463706	0.02071656	0.534242999	0.266924455
<i>ZFP14</i>	0.045478278	0.109334032	0.081940036	2.404093496	1.801740071
<i>TGM2</i>	60.06027264	21.89792196	28.63067677	0.36459911	0.476699081
<i>MSX2</i>	0.1521289	0.030477675	0.030455193	0.200341125	0.200193341
<i>GYLTL1B</i>	1.534393294	2.860175858	3.979923716	1.864043508	2.593809378
<i>SLIT3</i>	1.400323554	2.798410397	2.838396442	1.998402719	2.02695758
<i>TNIP3</i>	0.10431696	0.501575451	0.222757982	4.808186992	2.13539564
<i>BTG2</i>	1.539239316	2.01386407	4.578161145	1.308350202	2.97430107
<i>DENND2D</i>	0.025847143	0.062138949	0.206977039	2.404093496	8.00773365
<i>RARB</i>	1.981862739	3.467185045	5.565756347	1.749457708	2.808346027
<i>SYNE4</i>	0.110567403	0.044302396	0.044269716	0.400682249	0.400386683
<i>TRO</i>	2.423556349	5.170142614	5.05925464	2.133287562	2.087533324
<i>LANCL3</i>	0.025567882	0.040978387	0.122844475	1.602728997	4.80464019
<i>TUB</i>	0.996011507	2.192302159	2.03116909	2.201081156	2.039302836
<i>VNN1</i>	0.177299031	0.390723159	0.319446768	2.203752371	1.801740071
<i>TENM2</i>	16.35888829	37.42895669	31.87343313	2.287989014	1.948386257
<i>GOLGA6L9</i>	0.105126866	0.336979754	0.273594082	3.205457995	2.602513436
<i>HIST1H2AK</i>	0.1852004	0.593652104	0.296607096	3.205457995	1.60154673
<i>GLP2R</i>	0.032994649	0.052881481	0.184948654	1.602728997	5.605413555
<i>RBKS</i>	0.677260042	0.314213352	0.342525349	0.463947868	0.505751599
<i>HIST1H2BN</i>	0.379475208	1.672538779	0.759684098	4.407504743	2.001933413

<i>HIST1H2BL</i>	2.632871035	1.507063841	0.752976071	0.572403213	0.285990488
<i>GBP2</i>	0.26796477	0.330365313	0.775785798	1.23286846	2.895103704
<i>COL1A1</i>	5.18886089	12.23261878	9.990659792	2.357476725	1.92540521
<i>ADSSL1</i>	0.56418665	1.167974476	1.129464106	2.070191622	2.001933413
<i>GAREM</i>	0.024212643	0.009701576	0.00969442	0.400682249	0.400386683
<i>MXRA5</i>	0.182958615	0.353212571	0.419546741	1.930559929	2.293123727
<i>NDRG4</i>	0.239303888	0.019176964	0.134139726	0.08013645	0.560541356
<i>MMRN2</i>	1.356243498	0.590385151	0.616765541	0.43530911	0.454760183
<i>GSDMB</i>	0.186280286	0.721512306	0.944732513	3.873261744	5.071564645
<i>TMEM173</i>	1.410077532	3.295792716	2.57195854	2.337313121	1.823983776
<i>VTN</i>	0.050770074	0.122056005	0.081310646	2.404093496	1.60154673
<i>CDRT4</i>	0.375145727	0.655916656	0.98314922	1.748431633	2.620712831
<i>IFNLR1</i>	0.018670213	0.044884939	0.059802439	2.404093496	3.20309346
<i>WAS</i>	0.046527681	0.074571264	0.111774383	1.602728997	2.402320095
<i>LILRB3</i>	0.390661834	0.111808045	0.022345114	0.286201607	0.057198098
<i>TJP3</i>	0.21823166	0.437207762	0.699016402	2.003411247	3.20309346
<i>AMY2B</i>	0.075996596	0.243603896	0.152140125	3.205457995	2.001933413
<i>LMX1B</i>	0.234648812	0.763909361	0.692883162	3.255543276	2.952851784
<i>SELIL3</i>	0.093638365	0.300153845	0.599864867	3.205457995	6.40618692
<i>UPK1B</i>	0.041395619	0.099518939	0.165742546	2.404093496	4.003866825
<i>PDE5A</i>	0.134084136	0.429801066	0.819924036	3.205457995	6.114996606
<i>SAMD5</i>	0.161654998	0.4642014	0.183386108	2.87155612	1.134428934
<i>LIMS2</i>	0.109127478	0.116601182	0.436931887	1.068485998	4.003866825
<i>LEAP2</i>	0.361494417	0.193125861	0.0964917	0.534242999	0.266924455
<i>HAND2</i>	0.179882146	0.201811632	0.604988291	1.121910298	3.363248133
<i>KIAA1549L</i>	0.234568051	0.405320035	0.833521575	1.7279422	3.553431807
<i>SYT15</i>	0.030933981	0.099157577	0.099084433	3.205457995	3.20309346
<i>SYT17</i>	0.279135597	0.603961266	0.894097405	2.163684146	3.20309346
<i>SYT12</i>	7.142709502	19.63567787	24.82952181	2.749051724	3.476204906
<i>PIK3AP1</i>	0.017707791	0.198665535	0.042539783	11.21910298	2.402320095
<i>KCTD12</i>	0.573684742	1.28067806	1.137540761	2.232372532	1.98286738
<i>LPAR1</i>	0.827542876	2.258340507	3.779034485	2.728970995	4.566572433
<i>IL11</i>	0.035825141	0.057417992	0.086063455	1.602728997	2.402320095
<i>IL1B</i>	0.704899869	0.928019986	3.749660625	1.316527391	5.319423068
<i>MGAT3</i>	0.015799737	0.139274835	0.265692187	8.815009485	16.81624067
<i>REM2</i>	0.229134438	0.110172123	0.036696951	0.480818699	0.160154673
<i>IL32</i>	0.220895897	0.118012086	0.058962517	0.534242999	0.266924455
<i>CACNA1A</i>	0.029560092	0.126338176	0.11835467	4.273943993	4.003866825
<i>CACNA1H</i>	0.042132633	0.362958662	0.210866815	8.614668361	5.004833531
<i>CACNA1G</i>	0.033897218	0.101865103	0.061073977	3.00511687	1.801740071
<i>SNTG1</i>	0.025071273	0.100456139	0.040152815	4.006822493	1.60154673
<i>TMEM249</i>	0.159935264	0.341777181	0.298834433	2.136971996	1.868471185
<i>RERG</i>	0.109925399	0.322997812	0.381443104	2.938336495	3.470017915
<i>TMEM221</i>	0.044141028	0.106119159	0.600898313	2.404093496	13.61314721
<i>ZNF804A</i>	0.054552092	0.014572037	0.029122575	0.2671215	0.53384891
<i>NYNRIN</i>	0.130114065	0.225915717	0.32125829	1.736289747	2.469051209
<i>PLEKHS1</i>	0.296836879	0.158583024	0.079233022	0.534242999	0.266924455
<i>PCDHA1</i>	0.015732629	0.02521514	0.06299135	1.602728997	4.003866825
<i>FAM211B</i>	0.298770185	1.060305487	1.367126894	3.548899923	4.5758478



<i>FAM211A</i>	0.332427821	0.145306829	0.145199642	0.437107908	0.436785472
<i>FAM214A</i>	0.397925277	0.768218593	0.984911885	1.930559929	2.475117674
<i>FAM212A</i>	2.457466852	1.378528684	0.983937	0.560955149	0.400386683
<i>SALL2</i>	2.938833074	5.66307411	6.420671248	1.926980529	2.18476895
<i>SEC16B</i>	0.02117102	0.067862815	0.084765944	3.205457995	4.003866825
<i>LRFN1</i>	3.80227289	7.841247518	8.154843652	2.062252696	2.144728663
<i>PIK3C2A</i>	0.472731128	0.959165177	0.934294842	2.028986709	1.976376816
<i>PLEKHH2</i>	0.036752452	0.107991072	0.137341796	2.938336495	3.73694237
<i>LOC101928083</i>	0.161830472	0.352002672	0.370255805	2.175132211	2.2879239
<i>P2RY2</i>	0.009751853	0.015629577	0.039045119	1.602728997	4.003866825
<i>P2RX6</i>	0.751143432	1.329283459	2.155359424	1.769679935	2.869437891
<i>TLL2</i>	0.012581921	0.040330818	0.030225801	3.205457995	2.402320095
<i>KRT9</i>	0.409220099	0.119248894	0.148951162	0.291405272	0.363987893
<i>SPTBN2</i>	0.19153668	0.520533663	0.473469587	2.717670909	2.471952562
<i>TLR5</i>	0.019661247	0.063023302	0.062976812	3.205457995	3.20309346
<i>HOXA11</i>	0.096334924	0.257331293	0.179999029	2.671214996	1.868471185
<i>EFNA2</i>	0.039753702	0.127428823	0.063667412	3.205457995	1.60154673
<i>MEGF11</i>	0.086431029	0.230875861	0.219170275	2.671214996	2.535782323
<i>LOC730268</i>	0.038015254	0.761601874	0.395740837	20.03411247	10.41005375
<i>IL22RA1</i>	0.316378807	0.59926394	0.806106388	1.89413427	2.547915252
<i>LYPD6B</i>	0.054159049	0.477412531	0.21684562	8.815009485	4.003866825
<i>TMC3</i>	0.077377097	0.020669086	0.02065384	0.2671215	0.266924455
<i>MYRF</i>	0.430989127	0.874961111	1.046877995	2.030123397	2.429012541
<i>MYT1</i>	0.015391542	0.037002706	0.024650274	2.404093496	1.60154673
<i>EDIL3</i>	1.503391486	3.313102552	5.202463534	2.203752371	3.460484899
<i>KSR2</i>	0.080143165	0.156545725	0.184507471	1.953325966	2.302223424
<i>ATP9A</i>	0.40460668	0.855626549	1.250993252	2.114711872	3.091874937
<i>NOVA1</i>	0.616038654	1.051042564	1.6231403	1.706130868	2.634802685
<i>NOVA2</i>	0.232917051	0.471072722	0.843752772	2.022491354	3.622546175
<i>PCDH10</i>	0.444536183	0.928756879	1.029778269	2.089271729	2.316522949
<i>PCDH18</i>	0.288493682	0.762922362	0.612197849	2.644502846	2.122049417
<i>RGMA</i>	0.871193703	2.221366333	2.304288779	2.549796132	2.644978691
<i>GGT1</i>	0.031847545	0.229693431	0.204021329	7.212280488	6.40618692
<i>TMEM191C</i>	0.651814722	0.156702353	0.260977934	0.24040935	0.400386683
<i>TMEM191B</i>	0.447035449	0.204707622	0.153417463	0.457922571	0.343188585
<i>SYTL5</i>	0.035371469	0.08503632	0.113298123	2.404093496	3.20309346
<i>METTL7B</i>	1.4707814	2.810583999	3.986273318	1.910946112	2.710309851
<i>METTL7A</i>	0.022809152	0.03655689	0.073059847	1.602728997	3.20309346
<i>INHA</i>	0.059533322	0.238539455	0.095345398	4.006822493	1.60154673
<i>TNIK</i>	0.278789442	0.776062603	1.151485349	2.783687206	4.130304725
<i>CEP350</i>	0.251100683	0.477905036	0.573063006	1.903240684	2.28220409
<i>TNNI3</i>	1.717991852	3.563321052	4.774564993	2.074119879	2.77915462
<i>HSF2BP</i>	1.525294504	0.862811905	0.538859653	0.565669058	0.353282367
<i>TNSI</i>	0.911944362	0.451767172	0.398324048	0.495388963	0.436785472
<i>TMEM52B</i>	0.030545781	0.269261352	0.244602481	8.815009485	8.00773365
<i>EBF3</i>	0.199903444	0.026699254	0.053359118	0.13356075	0.266924455
<i>RUNX2</i>	0.245466405	0.614712696	0.565118508	2.504264058	2.302223424
<i>ILI7RD</i>	0.400559582	1.401413826	2.167068586	3.498640128	5.410102978
<i>RHOJ</i>	0.047080511	0.282964874	0.207354505	6.01023374	4.404253508

<i>RHOV</i>	0.299796543	0.720738918	0.560161201	2.404093496	1.868471185
<i>KLAA0754</i>	3.478975856	6.710590987	7.380114941	1.928898407	2.121346985
<i>ARHGAP44</i>	3.723154666	5.983248827	10.14638794	1.607037409	2.725212581
<i>ARHGAP42</i>	0.215131778	0.330431358	0.617307276	1.535948622	2.869437891
<i>CMPK2</i>	0.056530978	0.090603838	0.158439756	1.602728997	2.802706778
<i>PBX1</i>	2.383166498	4.514037333	5.185385988	1.89413427	2.175838739
<i>SNX10</i>	0.063128703	0.177061854	0.075827675	2.804775745	1.201160048
<i>SLC18A3</i>	0.105610146	0.02821074	0.028189931	0.2671215	0.266924455
<i>SNX32</i>	0.355894242	1.354704802	0.926219547	3.806481369	2.602513436
<i>SNX22</i>	0.302512536	0.167831174	0.093170762	0.554790807	0.307989756
<i>NOXA1</i>	0.667569858	1.646051645	2.508377066	2.465736919	3.757475021
<i>ZNF891</i>	0.665852938	0.296439392	0.177732433	0.445202499	0.266924455
<i>TRIM74</i>	0.063105322	0.101140729	0.252665304	1.602728997	4.003866825
<i>ZNF878</i>	0.193398829	0.542440345	0.271020104	2.804775745	1.401353389
<i>TM6SF1</i>	0.401639423	0.035762175	0.214414768	0.0890405	0.53384891
<i>TM6SF2</i>	0.114891685	0.046035059	0.0460011	0.400682249	0.400386683
<i>B4GALNT4</i>	6.980135532	15.75309311	14.81318008	2.256846309	2.122190897
<i>ECM2</i>	0.051788562	0.145255302	0.248825406	2.804775745	4.80464019
<i>PCLO</i>	0.075584548	0.188442407	0.131139868	2.493133996	1.735008958
<i>MCF2L2</i>	0.067977007	0.122567311	0.231345251	1.803070122	3.403286801
<i>SPINK6</i>	0.581119947	0.465688895	0.093069075	0.801364499	0.160154673
<i>PCP2</i>	0.085534321	0.205632506	0.136987213	2.404093496	1.60154673
<i>SYNGR3</i>	3.32295209	5.625367452	7.716701427	1.692882503	2.322242759
<i>SARDH</i>	0.050349991	0.100871738	0.161275726	2.003411247	3.20309346
<i>GJA3</i>	0.130913844	0.144250847	0.406225239	1.101876186	3.10299679
<i>ARMC4</i>	0.023849996	0.305800636	0.248279736	12.82183198	10.41005375
<i>AKAP17A</i>	0.312249912	1.021756141	0.687613884	3.27223837	2.202126754
<i>GJB2</i>	0.255503552	0.175501265	0.029228634	0.686883856	0.114396195
<i>LOC101928485</i>	0.095685718	0.230037412	0.153245149	2.404093496	1.60154673
<i>GLT8D2</i>	0.039977562	0.25629279	0.064025933	6.410915989	1.60154673
<i>ZNF732</i>	0.660404529	0.34243954	0.27997113	0.51852997	0.42393884
<i>ZNF813</i>	0.101709867	0.260821364	0.276918277	2.564366396	2.722629441
<i>ZNF805</i>	0.067305696	0.276424024	0.229060585	4.106993056	3.403286801
<i>VWA2</i>	0.029090724	0.011656137	0.011647538	0.400682249	0.400386683
<i>FAM86B2</i>	0.476200023	1.030346441	1.029586397	2.163684146	2.162088086
<i>IQCG</i>	0.565935679	1.239623415	1.208496581	2.190396296	2.13539564
<i>SLC16A9</i>	0.02136749	0.102738889	0.359320861	4.808186992	16.81624067
<i>KLAA0408</i>	0.04194593	0.058824464	0.109164847	1.402387873	2.602513436
<i>LOC101928170</i>	0.433879217	1.060470973	1.007572869	2.444161721	2.322242759
<i>NRARP</i>	0.650073897	1.562838428	1.119208003	2.404093496	1.721662735
<i>IQUB</i>	0.024236752	0.038844946	0.058224437	1.602728997	2.402320095
<i>CKMT2</i>	0.18723557	0.337598861	0.412316457	1.803070122	2.202126754
<i>C2orf88</i>	0.020361421	0.065267679	0.04891465	3.205457995	2.402320095
<i>C2orf72</i>	0.047580108	0.171580544	0.114302651	3.606140244	2.402320095
<i>ZNF610</i>	0.150516226	0.271391311	0.331455809	1.803070122	2.202126754
<i>SRGAP2D</i>	0.026722768	0.17131742	0.149792166	6.410915989	5.605413555
<i>THAP9</i>	0.105488093	0.338137652	0.118260878	3.205457995	1.121082711
<i>ZNF714</i>	0.154754195	0.341039924	0.348533542	2.203752371	2.252175089
<i>ZNF704</i>	0.035359235	0.165291209	0.188764892	4.674626242	5.3384891

<i>C2orf48</i>	0.936177848	0.187554923	0.655958	0.200341125	0.700676694
<i>TMEM150C</i>	0.135368937	0.506239347	0.758798873	3.739700994	5.605413555
<i>ESYT3</i>	0.034462858	0.069043277	0.124186223	2.003411247	3.603480143
<i>HIST4H4</i>	0.413554292	0.994223184	0.827908156	2.404093496	2.001933413
<i>IRF5</i>	0.114775593	0.229942715	0.298705024	2.003411247	2.602513436
<i>MILR1</i>	0.630334886	0.310848	0.271791363	0.493147384	0.431185658
<i>PIH1D2</i>	0.252234446	0.909592787	0.555452222	3.606140244	2.202126754
<i>GLI2</i>	0.176198933	0.292484823	0.423286238	1.659969319	2.402320095
<i>ZNF596</i>	0.394669285	0.27109196	0.112871661	0.686883856	0.285990488
<i>SULF1</i>	0.014904161	0.083605658	0.155153117	5.609551491	10.41005375
<i>SULF2</i>	0.020026371	0.064193693	0.064146339	3.205457995	3.20309346
<i>PHLDA2</i>	11.85282563	4.229771242	4.968168853	0.356857628	0.419154808
<i>C19orf73</i>	0.57252812	1.284650387	1.283702753	2.243820596	2.242165422
<i>SMPDL3A</i>	0.113388	0.666344199	0.696118694	5.87667299	6.139262465
<i>ZNF501</i>	0.075569649	0.141303946	0.221885261	1.869850497	2.936169005
<i>EDNRB</i>	0.019054391	0.32065977	0.534038721	16.82865447	28.02706778
<i>C19orf38</i>	0.058270988	0.233481505	0.18664742	4.006822493	3.20309346
<i>KRT32</i>	0.084979735	0.374548584	0.476346558	4.407504743	5.605413555
<i>CA12</i>	10.50167805	19.61366814	23.92406718	1.867669913	2.278118512
<i>CA11</i>	8.324307798	16.75836314	18.6319586	2.013183984	2.238259211
<i>KRT16</i>	1.239700003	0.119214189	0.119126249	0.09616374	0.096092804
<i>KRT86</i>	0.218534889	0.058375367	0.145830765	0.2671215	0.667311138
<i>ISLR</i>	0.074241555	0.535450917	0.237802639	7.212280488	3.20309346
<i>ZNF493</i>	0.015048964	0.108537348	0.060254047	7.212280488	4.003866825
<i>ZNF492</i>	0.02006883	0.112577136	0.048211754	5.609551491	2.402320095
<i>ZNF483</i>	0.137075115	0.45769638	0.311003954	3.339018744	2.268857868
<i>ISPD</i>	0.200488486	0.024717593	0.07409808	0.123286846	0.369587707
<i>ZNF469</i>	0.109692277	0.305076841	0.366855554	2.781206201	3.344406407
<i>NUDT13</i>	0.409086119	0.163913546	0.136493862	0.400682249	0.333655569
<i>NAAA</i>	0.868841385	0.109935575	0.29294528	0.126531237	0.337167733
<i>ZNF417</i>	0.380403119	0.87097587	0.681761153	2.289612853	1.792207055
<i>ZNF404</i>	0.075059193	0.481198181	0.360632416	6.410915989	4.80464019
<i>EGR3</i>	0.019463602	0.093584636	0.062343735	4.808186992	3.20309346
<i>LOC101060389</i>	0.025560211	0.102415229	0.143275555	4.006822493	5.605413555
<i>MAP1LC3C</i>	0.071469953	0.229093933	0.286156175	3.205457995	4.003866825
<i>AKR7A3</i>	0.068648013	0.275060403	0.164914501	4.006822493	2.402320095
<i>GNG2</i>	0.241151319	0.421636595	0.702209285	1.748431633	2.911903146
<i>ZNF396</i>	0.061113475	0.122435423	0.195752172	2.003411247	3.20309346
<i>RBPM52</i>	1.36580656	3.42034028	3.93048982	2.504264058	2.877779281
<i>RNLS</i>	0.282093325	0.028257447	0.141183013	0.100170562	0.500483353
<i>TUBB4A</i>	13.72021462	30.63054107	32.55936982	2.232511803	2.37309479
<i>ZNF33B</i>	0.209901899	0.437340619	0.403401241	2.083547697	1.921856076
<i>SERF1B</i>	1.164561929	0.39483171	0.430407773	0.339038826	0.369587707
<i>PHIP</i>	0.505485967	1.095423572	0.99769644	2.167070194	1.973737167
<i>CEACAM19</i>	0.037896879	0.212584495	0.060693623	5.609551491	1.60154673
<i>MAATS1</i>	0.057653181	0.169404447	0.184668528	2.938336495	3.20309346
<i>RAET1E</i>	1.095849916	0.520400129	0.390012189	0.474882666	0.355899273
<i>ROBO1</i>	7.798483902	17.38179139	18.10633148	2.228868023	2.321775835
<i>CBY3</i>	0.071590071	0.172109223	0.171982266	2.404093496	2.402320095

<i>YBX2</i>	0.269084599	1.121301195	0.603332185	4.167095393	2.242165422
<i>THBS2</i>	2.057012439	6.465972714	5.22000245	3.143380463	2.537662072
<i>TCF7L1</i>	1.45977012	3.345650738	2.524921267	2.291902466	1.729670468
<i>ZNF284</i>	0.231500501	0.463790706	0.834207457	2.003411247	3.603480143
<i>FERMT3</i>	0.066765035	0.133757821	0.160390984	2.003411247	2.402320095
<i>LRRC6</i>	0.049907548	0.119982411	0.099911588	2.404093496	2.001933413
<i>ZNF234</i>	0.425960921	0.712382525	1.02329448	1.672412867	2.402320095
<i>ZNF233</i>	0.091506105	0.342205474	0.293102608	3.739700994	3.20309346
<i>ZNF221</i>	0.10534895	0.393973573	0.421803166	3.739700994	4.003866825
<i>ATXN1</i>	0.816999134	1.694554145	2.007591653	2.074119879	2.45727513
<i>HUS1B</i>	0.249099954	0.133079906	0.066490869	0.534242999	0.266924455
<i>C9orf47</i>	0.052201093	0.069720172	0.153271232	1.335607498	2.936169005
<i>CXXC5</i>	0.465107466	0.99392163	0.900077037	2.136971996	1.935202299
<i>ADHFE1</i>	0.674344466	1.116817811	1.763990485	1.656153297	2.615859659
<i>LRRN1</i>	0.021097619	0.084534413	0.033788822	4.006822493	1.60154673
<i>FAM57B</i>	0.201590592	0.581571157	0.839427559	2.884912195	4.164021498
<i>CD37</i>	1.553862202	3.627350882	2.596782186	2.334409627	1.671179197
<i>CD72</i>	0.220134843	0.44102062	0.749182005	2.003411247	3.403286801
<i>RUNDC3A</i>	0.254443124	0.055609551	0.16670559	0.218553954	0.655178208
<i>RASGRP3</i>	0.159602343	0.014211072	0.127805306	0.0890405	0.800773365
<i>ZNF135</i>	0.318901224	0.109524051	0.05472163	0.343441928	0.171594293
<i>ZNF121</i>	0.439890796	0.822530024	0.978480092	1.869850497	2.224370458
<i>ZNF112</i>	0.068427457	0.32901201	0.273974426	4.808186992	4.003866825
<i>ATP6AP1L</i>	0.224781489	0.450329762	1.349992718	2.003411247	6.005800238
<i>GPR4</i>	0.16770115	0.627152157	0.738598378	3.739700994	4.404253508
<i>CDH4</i>	0.379329547	0.041928446	0.125692551	0.110533034	0.331354496
<i>CDH3</i>	14.36472517	27.20581533	30.71159767	1.893932185	2.13798714
<i>CDH1</i>	0.035386162	0.141786068	0.042504444	4.006822493	1.201160048
<i>LOC101060321</i>	0.181646448	0.058226006	0.11636611	0.320545799	0.640618692
<i>LSMEM1</i>	0.079955124	0.032036599	0.032012967	0.400682249	0.400386683
<i>LOC100653515</i>	0.26247592	0.120193648	0.030026246	0.457922571	0.114396195
<i>PTPN13</i>	0.923627084	2.172733482	2.051837848	2.352392561	2.221500303
<i>FAM63B</i>	0.169942518	0.367701932	0.353822149	2.163684146	2.082010749
<i>LOC101928641</i>	0.181517438	0.549521716	0.468363951	3.027376995	2.580269732
<i>RDH10</i>	10.40449587	20.91339144	30.53788221	2.010034094	2.935066012
<i>NEBL</i>	0.044104465	0.070687505	0.155397795	1.602728997	3.523402806
<i>PKIA</i>	0.567812701	1.088809679	1.575173603	1.917550765	2.774107729
<i>KCNC1</i>	1.028679002	2.151344174	2.290395538	2.091365887	2.226540576
<i>KIAA2018</i>	0.186443356	0.512971197	0.527522687	2.751351445	2.829399223
<i>PKLR</i>	0.080092934	0.256734536	0.192408865	3.205457995	2.402320095
<i>NEO1</i>	0.138205517	0.29534132	0.322791283	2.136971996	2.335588981
<i>KCNJ4</i>	0.99012708	1.917510671	2.378602182	1.936630872	2.402320095
<i>COL26A1</i>	0.337061065	1.035416957	0.472341666	3.071897245	1.401353389
<i>KCNK1</i>	0.197112874	0.379102223	0.631370958	1.923274797	3.20309346
<i>SLC23A3</i>	0.0352325	0.084702223	0.084639742	2.404093496	2.402320095
<i>SOAT2</i>	0.32876868	0.065865887	0.098725951	0.200341125	0.300290012
<i>KCNQ2</i>	0.110843132	0.688399572	0.451197826	6.210574865	4.070597939
<i>NTNG2</i>	0.156795431	0.104708577	0.041852535	0.667803749	0.266924455
<i>KCNS2</i>	0.026891472	0.064649614	0.04306795	2.404093496	1.60154673

<i>PLAT</i>	61.29648803	138.756123	248.9489817	2.263687977	4.061390624
<i>PLBI</i>	0.049645795	0.013261459	0.013251677	0.2671215	0.266924455
<i>ADAMI2</i>	7.49419861	14.86530869	16.00873783	1.983575492	2.13615073
<i>CARD14</i>	0.061201282	0.245222672	0.147025069	4.006822493	2.402320095
<i>PIBF1</i>	0.355651379	0.789248462	0.722944077	2.219163227	2.032732388
<i>GRM2</i>	0.25362365	0.121946994	0.040619013	0.480818699	0.160154673
<i>ELF3</i>	0.157374725	0.44140081	0.609103857	2.804775745	3.870404598
<i>HS3ST1</i>	0.346838409	1.007546955	1.527564279	2.904946308	4.404253508
<i>ST3GAL6</i>	0.095426698	0.286768379	0.267453052	3.00511687	2.802706778
<i>LRRC37A2</i>	0.049386773	0.13192269	0.171372989	2.671214996	3.470017915
<i>PLLP</i>	0.569086067	1.003299815	1.321555998	1.763001897	2.322242759
<i>PLP1</i>	0.02717454	0.065330136	0.369931019	2.404093496	13.61314721
<i>IL13RA2</i>	3.722892245	1.541420067	1.391223377	0.414038324	0.373694237
<i>APOA1</i>	0.091114636	0.146032068	0.364810866	1.602728997	4.003866825
<i>CEBPA</i>	0.71236338	1.530950029	1.607608204	2.149113883	2.256724938
<i>CEBPE</i>	0.385484996	0.17652228	0.176392067	0.457922571	0.45758478
<i>APOBR</i>	0.06739888	0.01800369	0.035980819	0.2671215	0.53384891
<i>NIPAL1</i>	0.116488857	0.062233356	0.031093725	0.534242999	0.266924455
<i>SLC22A4</i>	1.632331996	0.622901387	0.466831423	0.381602142	0.285990488
<i>FAM43B</i>	0.032994649	0.158644443	0.079263709	4.808186992	2.402320095
<i>FAM46B</i>	8.899604752	4.85995217	3.879380927	0.54609113	0.435904856
<i>PMCH</i>	0.675235278	0.36073972	0.180236808	0.534242999	0.266924455
<i>NGEF</i>	0.535126785	0.879104796	1.671209578	1.642797222	3.123016124
<i>GRIN2A</i>	0.058017015	0.158075438	0.102208656	2.724639295	1.761701403
<i>PRKAR2B</i>	0.442133707	0.988339135	1.024878383	2.235385181	2.318028162
<i>GLYATL2</i>	0.061733467	0.346297061	0.346041612	5.609551491	5.605413555
<i>GRIN3A</i>	0.010962834	0.026355678	0.017557491	2.404093496	1.60154673
<i>AADAT</i>	0.549390698	0.234806507	0.087987488	0.427394399	0.160154673
<i>FAM13C</i>	0.024011326	0.057725472	0.03845526	2.404093496	1.60154673
<i>LAG3</i>	0.042767161	0.137088337	0.205480819	3.205457995	4.80464019
<i>ST6GALNAC2</i>	0.121414039	0.291890702	0.486125644	2.404093496	4.003866825
<i>SLC47A2</i>	0.074382	0.039738063	0.019854375	0.534242999	0.266924455
<i>CECR6</i>	0.016953668	0.095102476	0.027152092	5.609551491	1.60154673
<i>BAIAP3</i>	0.054598708	0.145844888	0.116589843	2.671214996	2.13539564
<i>GREB1L</i>	0.079147309	0.380555059	0.324817665	4.808186992	4.103963496
<i>CRIP3</i>	0.160942413	0.988797113	0.42959466	6.14379449	2.66924455
<i>CRIP1</i>	20.7655949	8.960436447	8.243205535	0.431503961	0.396964574
<i>FAM171B</i>	0.093515021	0.312248408	0.436825306	3.339018744	4.671177963
<i>RTL1</i>	0.040635432	0.048845689	0.16269886	1.202046748	4.003866825
<i>FAM174B</i>	1.392876015	2.777524389	6.873841249	1.994093055	4.934998645
<i>CHD2</i>	2.256264596	4.082784655	5.595117192	1.809532739	2.479814292
<i>CHDH</i>	0.558074273	1.032048254	1.443801736	1.849302689	2.587113949
<i>LOC101928991</i>	0.064686548	0.31102502	0.41439412	4.808186992	6.40618692
<i>RNF125</i>	0.014468781	0.104352909	0.104275932	7.212280488	7.206960285
<i>RNF157</i>	0.980604705	1.792225153	2.617473765	1.827673418	2.66924455
<i>RNF152</i>	0.01894844	0.007592303	0.007586703	0.400682249	0.400386683
<i>LOC102723563</i>	1.959275105	1.046729008	0.813522017	0.534242999	0.415215819
<i>LOC102723565</i>	0.17529256	0.561892938	0.561478453	3.205457995	3.20309346
<i>IQCA1</i>	0.076451257	0.081687098	0.285693942	1.068485998	3.73694237

<i>CHRD</i>	0.169368159	0.329619388	0.484376825	1.946170925	2.859904875
<i>LOC102723588</i>	0.112242667	0.269841866	0.179761876	2.404093496	1.60154673
<i>KCNAB3</i>	0.060960418	0.146554545	0.122038698	2.404093496	2.001933413
<i>B3GNT8</i>	0.136380231	0.072860184	0.036403219	0.534242999	0.266924455
<i>B3GNT7</i>	0.070503877	0.169497911	0.301107341	2.404093496	4.27079128
<i>OVOS2</i>	0.073919466	0.236945742	0.251569142	3.205457995	3.403286801
<i>FAM186B</i>	0.027375381	0.175501265	0.153450329	6.410915989	5.605413555
<i>PTCH2</i>	0.03964271	0.127073042	0.174596545	3.205457995	4.404253508
<i>POLK</i>	0.260925526	0.62728936	0.522355528	2.404093496	2.001933413
<i>RNF207</i>	1.308668657	2.69916614	2.61127778	2.0625283	1.995369696
<i>NRIP1</i>	0.284484561	0.736537288	0.709708476	2.589023765	2.494717022
<i>POLN</i>	0.029386749	0.070648491	0.094128502	2.404093496	3.20309346
<i>LCA5</i>	0.018053016	0.144670464	0.144563747	8.013644987	8.00773365
<i>CCDC169- SOHLH2</i>	0.257183952	0.077286783	0.025743257	0.300511687	0.100096671
<i>ACHE</i>	0.432155145	0.669539996	1.153527765	1.549304697	2.66924455
<i>YPEL3</i>	3.057905856	6.104747394	7.646784949	1.996381734	2.500660684
<i>CRLF1</i>	0.047224049	0.491967791	0.378157605	10.41773848	8.00773365
<i>YPEL2</i>	0.03256582	0.078291275	0.104311364	2.404093496	3.20309346
<i>LCN2</i>	0.207280254	0.747481664	0.580945771	3.606140244	2.802706778
<i>TTC39A</i>	0.087826994	0.258065262	0.117215863	2.938336495	1.334622275
<i>KALRN</i>	0.010609238	0.017003734	0.025486787	1.602728997	2.402320095
<i>EPGN</i>	0.123154585	0.024672928	0.073964184	0.200341125	0.600580024
<i>SCNN1D</i>	0.306848077	0.692982892	1.005200865	2.25839086	3.275891039
<i>SCNN1A</i>	0.04894696	0.176509603	0.137183977	3.606140244	2.802706778
<i>HHIPL2</i>	0.463360753	0.954825063	1.033630788	2.060651568	2.230725803
<i>ADD2</i>	2.419879959	0.928166922	1.093104082	0.383559076	0.451718308
<i>AGPAT4</i>	1.070443741	2.304837907	2.095335823	2.153161178	1.957446003
<i>LDHD</i>	0.287811433	0.626027919	1.28405678	2.175132211	4.461451605
<i>C10orf54</i>	4.389877946	10.43927401	8.988300908	2.378032862	2.047505881
<i>TP53TG5</i>	0.450071917	1.030490445	0.97824378	2.289612853	2.173527705
<i>ICOSLG</i>	0.154754195	0.041338173	0.082615358	0.2671215	0.53384891
<i>MCF2L</i>	0.02447348	0.068642623	0.19597711	2.804775745	8.00773365
<i>PGAP1</i>	0.276282831	0.616338783	0.723514372	2.230825496	2.618745329
<i>NYAP1</i>	0.303175033	0.60738427	0.867051754	2.003411247	2.859904875
<i>RHBDL1</i>	0.473582247	1.349376	1.05342236	2.849295995	2.224370458
<i>VAMP7</i>	0.73690118	1.258078077	2.668236829	1.707254802	3.620888259
<i>LRRC29</i>	0.637926498	1.161844656	2.229096213	1.821282952	3.494283775
<i>LEPR</i>	0.315219377	1.023717504	0.983106674	3.247635074	3.118801527
<i>IFI16</i>	0.079519774	0.488553147	0.169806178	6.14379449	2.13539564
<i>SH3BP1</i>	8.59859002	16.21942356	18.88221958	1.886288743	2.195966959
<i>IFI27</i>	0.116861707	0.374595292	0.842217679	3.205457995	7.206960285
<i>PDZRN3</i>	1.760761317	3.609564584	4.951292686	2.050002206	2.812018096
<i>HIST2H4B</i>	0.215131778	0.517196909	0.344543596	2.404093496	1.60154673
<i>AKR1C3</i>	1.252826238	2.733030725	3.121159635	2.181492246	2.491294913
<i>AKR1C2</i>	0.047250241	0.113593997	0.359448976	2.404093496	7.607346968
<i>CLGN</i>	0.07754143	0.124277898	0.227674743	1.602728997	2.936169005
<i>AFF3</i>	0.036025873	0.129914352	0.07933354	3.606140244	2.202126754
<i>CRMP1</i>	0.320701957	0.624140825	0.917177091	1.946170925	2.859904875
<i>PTHLH</i>	0.360411144	0.902564675	1.406962268	2.504264058	3.903770155

<i>PRTG</i>	0.040525894	0.086602701	0.086538818	2.136971996	2.13539564
<i>CLMN</i>	0.080180879	0.165989784	0.278229087	2.070191622	3.470017915
<i>ACOT6</i>	0.424263866	0.271992	0.067947841	0.641091599	0.160154673
<i>C17orf72</i>	0.027410613	0.043931784	0.15364782	1.602728997	5.605413555
<i>GYG2</i>	0.777896233	2.131552032	1.768285012	2.740149576	2.273163101
<i>C2orf27A</i>	0.298710323	0.095750339	0.047839854	0.320545799	0.160154673
<i>PSD3</i>	0.481105858	0.911279092	1.074049139	1.89413427	2.232459078
<i>NTSR1</i>	1.113353811	0.165222633	0.561342567	0.148400833	0.504190637
<i>DNASE1L2</i>	0.145379154	0.388338976	0.232831509	2.671214996	1.60154673
<i>MYH14</i>	0.024650516	0.029631073	0.069088169	1.202046748	2.802706778
<i>NCAM2</i>	0.11908745	0.310155476	0.238405144	2.604434621	2.001933413
<i>LGI4</i>	0.058997357	0.496423072	0.094487025	8.414327236	1.60154673
<i>LYPD6</i>	0.228397277	0.599005535	0.315908605	2.62264745	1.383153994
<i>JAK3</i>	0.093361298	0.423959768	0.535788891	4.541065492	5.738875783
<i>CCDC7</i>	0.151198907	0.10770261	0.026905791	0.712323999	0.177949637
<i>ARL17A</i>	0.145379154	0.310671181	0.362182347	2.136971996	2.491294913
<i>PTK6</i>	0.033606384	0.053861927	0.134555487	1.602728997	4.003866825
<i>NEK10</i>	0.085499984	0.191846625	0.191705108	2.243820596	2.242165422
<i>SLFN13</i>	0.040237187	0.112856286	0.112773037	2.804775745	2.802706778
<i>C6orf165</i>	0.038461483	0.061643334	0.277190378	1.602728997	7.206960285
<i>PTX3</i>	0.395629338	0.951129919	1.337639843	2.404093496	3.381043097
<i>BNIP1</i>	0.105960428	0.028304308	0.056566859	0.2671215	0.53384891
<i>MRGPRF</i>	0.149263573	0.478458113	0.328697307	3.205457995	2.202126754
<i>UBN2</i>	0.076675325	0.132342826	0.188921717	1.726015843	2.463918046
<i>LHX6</i>	0.165974197	0.475020818	0.360749515	2.862016067	2.173527705
<i>LHX9</i>	0.066582403	0.146731128	0.159952244	2.203752371	2.402320095
<i>IFIT2</i>	0.609386153	1.074348944	1.502979017	1.763001897	2.466381964
<i>GDPD1</i>	0.181535857	0.27017044	0.539942293	1.488248355	2.97430107
<i>GDPD3</i>	0.129373097	0.570212537	0.880587505	4.407504743	6.806573603
<i>GDPD5</i>	0.617334668	1.269038918	1.246609533	2.055674149	2.019341529
<i>ZDHHC19</i>	0.572186312	1.426537146	1.323664502	2.493133996	2.313345277
<i>KISS1R</i>	0.157277879	0.042012303	0.041981312	0.2671215	0.266924455
<i>COLQ</i>	0.081549634	0.174269284	0.261211099	2.136971996	3.20309346
<i>ARHGDI3</i>	0.361750251	0.724734522	0.724199915	2.003411247	2.001933413
<i>LIG4</i>	0.308947178	0.727264194	0.896812932	2.354008215	2.902803448
<i>ZSCAN1</i>	0.285400952	0.781426486	0.876075676	2.73799537	3.069631233
<i>NOS3</i>	0.038374858	0.015376124	0.015364782	0.400682249	0.400386683
<i>SAMD14</i>	0.77424735	1.340981959	1.97998932	1.731981336	2.557308488
<i>SAMD11</i>	8.439163117	18.44412469	16.42720191	2.185539542	1.946543951
<i>NOX5</i>	0.028069912	0.134965388	0.112388191	4.808186992	4.003866825
<i>NOX1</i>	0.168430574	0.107979426	0.053949887	0.641091599	0.320309346
<i>C20orf195</i>	0.912773402	1.706749799	3.228250444	1.869850497	3.536749029
<i>FOXO4</i>	1.119610545	2.120692702	2.934177721	1.89413427	2.620712831
<i>FOXO1</i>	0.66811577	2.117821292	2.544266513	3.169841795	3.808122225
<i>CPA4</i>	7.258120059	30.58456865	29.83549402	4.213841656	4.110636607
<i>C7orf61</i>	0.084852773	0.33999	0.475634885	4.006822493	5.605413555
<i>PVRIG</i>	0.214589885	0.028660786	0.114558576	0.13356075	0.53384891
<i>SLC25A27</i>	0.100432873	0.26157085	0.241271908	2.604434621	2.402320095
<i>SFRP2</i>	2.525798426	7.959114643	5.999213871	3.151128198	2.375175235

<i>C20orf26</i>	0.080275321	0.016082448	0.048211754	0.200341125	0.600580024
<i>PILRA</i>	0.194207107	0.622522723	0.259193131	3.205457995	1.334622275
<i>SBSPON</i>	0.74021645	1.923351538	1.095681294	2.598363678	1.480217432
<i>FOXBI</i>	0.817471267	0.421130862	0.37406241	0.515162892	0.45758478
<i>FOXA1</i>	0.025204788	0.060594667	0.343116492	2.404093496	13.61314721
<i>SAMD9L</i>	0.011943388	0.047855034	0.038255787	4.006822493	3.20309346
<i>RPGRIP1L</i>	0.509885282	0.993901533	1.125590823	1.949264997	2.207537385
<i>NPNT</i>	0.19766168	0.532796816	0.805800336	2.695498768	4.076664404
<i>NPRI</i>	0.060008582	0.176325408	0.080088791	2.938336495	1.334622275
<i>CPS1</i>	0.044370929	0.106671862	0.118436861	2.404093496	2.66924455
<i>CD164L2</i>	0.055355545	0.399239719	0.177308985	7.212280488	3.20309346
<i>LAMC3</i>	0.097793586	0.380646069	0.223744283	3.892341851	2.2879239
<i>ATP2A3</i>	0.592944578	1.649101137	1.145140189	2.781206201	1.931276939
<i>PNLIPRP3</i>	0.036895706	0.20696836	0.206815688	5.609551491	5.605413555
<i>C20orf112</i>	0.204875814	0.608432522	0.772042801	2.969762554	3.768345247
<i>ATP2C2</i>	0.049073839	0.078652064	0.196485115	1.602728997	4.003866825
<i>COL21A1</i>	0.019683961	0.063096111	0.031524784	3.205457995	1.60154673
<i>BEST3</i>	0.120600487	0.03865798	0.057944195	0.320545799	0.480464019
<i>FAM107B</i>	1.282082689	1.824548307	4.248238631	1.423112817	3.313544959
<i>BEST1</i>	0.092025044	0.258109611	0.128959607	2.804775745	1.401353389
<i>NUTM2A</i>	0.203543446	0.118627267	0.07408735	0.582810544	0.363987893
<i>NUTM2G</i>	0.040625744	0.162780143	0.065064027	4.006822493	1.60154673
<i>ACSSI</i>	0.231374753	0.037083103	0.055583622	0.1602729	0.24023201
<i>PARP10</i>	0.605402105	1.319601892	1.105320928	2.179711436	1.825763272
<i>ALOX12B</i>	0.102148902	0.163717007	0.29992644	1.602728997	2.936169005
<i>DISC1</i>	0.011906664	0.076332626	0.066741778	6.410915989	5.605413555
<i>PRELP</i>	0.043913497	0.175953588	0.058607931	4.006822493	1.334622275
<i>SULT1A1</i>	0.422906596	0.112967444	0.3010243	0.2671215	0.711798547
<i>WNT9A</i>	0.206110123	0.330338671	0.49514249	1.602728997	2.402320095
<i>PPARA</i>	0.211941945	0.339685501	0.556673283	1.602728997	2.626536637
<i>BODIL1</i>	0.301565254	0.674114499	0.660907474	2.235385181	2.191590262
<i>NRG2</i>	0.172759816	0.017305448	0.051878047	0.100170562	0.300290012
<i>CCDC78</i>	0.261593196	0.139754334	0.034912811	0.534242999	0.133462228
<i>CCDC87</i>	0.087676347	0.187361899	0.163820729	2.136971996	1.868471185
<i>ZBED6CL</i>	0.029652692	0.142575688	0.047490172	4.808186992	1.60154673
<i>NRTN</i>	1.080335669	1.917001586	2.471725798	1.774449961	2.2879239
<i>COX6B2</i>	0.256140061	0.04105231	0.041022028	0.1602729	0.160154673
<i>RARRES1</i>	0.609386153	1.85569363	3.96890563	3.045185095	6.512956702
<i>ALPL</i>	0.295350407	1.025627769	0.68324747	3.472579494	2.313345277
<i>FAM154B</i>	0.027209257	0.130827196	0.130730691	4.808186992	4.80464019
<i>MYOCD</i>	0.019791424	0.039650361	0.039621113	2.003411247	2.001933413
<i>ACTA2</i>	26.21670742	58.2508464	54.48257301	2.221897871	2.0781623
<i>ACTA1</i>	0.171183223	0.091453439	0.045692989	0.534242999	0.266924455
<i>ASB16</i>	0.159312172	0.351084578	0.318932361	2.203752371	2.001933413
<i>FAM156B</i>	0.191013866	0.393613022	0.458876449	2.060651568	2.402320095
<i>EYA4</i>	0.927791221	2.122569573	1.677630157	2.287766391	1.808197921
<i>NFATC2</i>	0.045284882	0.136086363	0.126920246	3.00511687	2.802706778
<i>CSF1</i>	114.7297672	239.5254442	289.4903468	2.087735817	2.523236592
<i>GOLGA8B</i>	0.117614612	0.397953627	0.324406902	3.383538994	2.758219368



<i>TSSK3</i>	0.711552032	1.814312619	2.0719706	2.549796132	2.911903146
<i>TSSK4</i>	0.15194801	0.446474383	0.567820956	2.938336495	3.73694237
<i>CCDC33</i>	0.463890817	0.721623874	1.17996801	1.555589909	2.543633042
<i>CCDC18</i>	0.281317064	0.763982666	0.438027357	2.715735246	1.557059321
<i>CCDC19</i>	0.142382481	0.380334217	0.266037562	2.671214996	1.868471185
<i>ZGLP1</i>	0.086052711	0.344797939	0.413452315	4.006822493	4.80464019
<i>MAGIX</i>	0.751619514	0.373854535	0.352824382	0.497398654	0.469418869
<i>CCDC65</i>	0.046937843	0.188071603	0.187932871	4.006822493	4.003866825
<i>SNAP91</i>	0.150916181	0.498872838	0.302124145	3.305628557	2.001933413
<i>CLDN22</i>	0.062918895	0.22689436	0.176343214	3.606140244	2.802706778
<i>LMO2</i>	0.222821755	0.059520481	0.118953151	0.2671215	0.53384891
<i>AMPH</i>	0.137739991	0.082784954	0.027574629	0.601023374	0.200193341
<i>RASL12</i>	0.090277836	0.337612112	0.433752517	3.739700994	4.80464019
<i>CHRNA3</i>	0.051351528	0.205756456	0.164483742	4.006822493	3.20309346
<i>FAM163A</i>	0.10763384	0.43126969	0.344761248	4.006822493	3.20309346
<i>VATIL</i>	0.045242796	0.126895896	0.12680229	2.804775745	2.802706778
<i>FAM167A</i>	0.45335961	0.252734815	0.189411287	0.557470956	0.417794799
<i>CLDN4</i>	0.41874913	0.671141374	1.341292601	1.602728997	3.20309346
<i>CLDN7</i>	0.212026342	0.067964153	0.135828038	0.320545799	0.640618692
<i>UGT8</i>	0.040879167	0.114656896	0.114572319	2.804775745	2.802706778
<i>COL24A1</i>	0.01310649	0.052515378	0.125943936	4.006822493	9.60928038
<i>HAPI</i>	0.238208954	0.399138235	0.606936228	1.675580315	2.547915252
<i>RBPMS</i>	0.022289949	0.142898989	0.142793578	6.410915989	6.40618692
<i>PTPRD</i>	0.016853053	0.040516316	0.040486428	2.404093496	2.402320095
<i>NTN3</i>	0.085792733	0.240629378	0.206101607	2.804775745	2.402320095
<i>PPP5D1</i>	0.088788102	0.320182349	0.213297442	3.606140244	2.402320095
<i>SPATA25</i>	0.494154201	1.583990533	0.870552149	3.205457995	1.761701403
<i>ANK2</i>	0.125736485	0.293122198	0.329519221	2.331242178	2.620712831
<i>ANK1</i>	4.223506636	8.164181091	9.512571467	1.933033802	2.252292298
<i>ALPK3</i>	0.023410878	0.056281939	0.056240422	2.404093496	2.402320095
<i>KIAA1211L</i>	0.21298046	0.68269992	0.477537424	3.205457995	2.242165422
<i>WNK2</i>	0.485926293	1.458194003	0.885861726	3.000854293	1.823037235
<i>CTSS</i>	0.020743166	0.033245674	0.049831725	1.602728997	2.402320095
<i>ANO4</i>	0.100819153	0.048475734	0.032293317	0.480818699	0.320309346
<i>ANO2</i>	0.114505624	0.073408594	0.036677222	0.641091599	0.320309346
<i>SCARA5</i>	0.020523292	0.148019737	0.723118239	7.212280488	35.23402806
<i>FAM132A</i>	0.081679946	0.458187866	0.196221377	5.609551491	2.402320095
<i>SBK1</i>	0.921365501	2.187702527	2.090447366	2.374413329	2.268857868
<i>ROPNIL</i>	0.187098501	0.549758354	0.299646993	2.938336495	1.60154673
<i>ANXA8</i>	0.039132836	0.094078997	0.062673066	2.404093496	1.60154673
<i>ANXA3</i>	0.157958314	0.042194062	0.042162937	0.2671215	0.266924455
<i>PRSS16</i>	0.178412951	0.09531587	0.07143417	0.534242999	0.400386683
<i>AOC3</i>	0.021129014	0.067728167	0.033839103	3.205457995	1.60154673
<i>PRSS35</i>	0.06533143	0.445011451	0.366209681	6.811598239	5.605413555
<i>C11orf16</i>	0.04425568	0.106394793	0.07087754	2.404093496	1.60154673
<i>TMCC3</i>	0.435914297	0.79180615	1.361367379	1.816426197	3.123016124
<i>BTN3A1</i>	1.05702543	2.00362897	2.278871029	1.895535256	2.15592829
<i>LRR1Q3</i>	0.237883935	0.09531587	0.119056949	0.400682249	0.500483353
<i>SCG2</i>	1.75551546	1.884591536	5.596556126	1.073526027	3.187984529

<i>USP53</i>	0.310024628	0.71427285	0.786154971	2.303922934	2.535782323
<i>AOX1</i>	6.164087912	2.628961994	3.428955967	0.426496512	0.556279536
<i>CAMK1D</i>	0.985486748	1.545862481	2.54375443	1.56862838	2.581216272
<i>RAPGEF3</i>	0.05479478	0.087821183	0.219391002	1.602728997	4.003866825
<i>SRCIN1</i>	0.398771926	0.69722545	1.103125964	1.748431633	2.766307988
<i>PRKAA2</i>	0.12753321	0.248201425	0.320964907	1.946170925	2.51671629
<i>APLN</i>	9.697745534	4.129233386	3.491389356	0.425793126	0.360020723
<i>APLF</i>	0.132801534	0.195107797	0.354479771	1.469168248	2.66924455
<i>CERKL</i>	0.543779899	1.597808323	2.135751397	2.938336495	3.927602695
<i>SDC2</i>	1.760068081	4.760289254	4.169521268	2.704605183	2.368954538
<i>SDC3</i>	6.404801975	12.65147869	13.46808201	1.975311453	2.102810057
<i>APOE</i>	38.56719737	64.29631419	94.47067877	1.667124359	2.449508526
<i>APOB</i>	0.042231095	0.024173214	0.01449323	0.572403213	0.343188585
<i>DYNC111</i>	0.111874175	0.067238994	0.022396465	0.601023374	0.200193341
<i>FGF14</i>	0.030092612	0.120575754	0.048194724	4.006822493	1.60154673
<i>CYP26B1</i>	0.037397798	0.209784874	0.239577285	5.609551491	6.40618692
<i>PRKCH</i>	0.121494843	0.194723309	0.486449173	1.602728997	4.003866825
<i>SDPR</i>	0.026204917	0.14699783	0.188857794	5.609551491	7.206960285
<i>PRKD1</i>	0.254719768	0.463916771	0.723176311	1.821282952	2.839105567
<i>FREM2</i>	0.015812445	0.038014597	0.139284035	2.404093496	8.808507015
<i>ASGR1</i>	0.169931218	0.453922819	0.408229181	2.671214996	2.402320095
<i>ASHIL</i>	1.418181425	2.980361464	2.815928415	2.101537512	1.985591099
<i>MAP2K6</i>	0.128494999	0.377561544	0.342984575	2.938336495	2.66924455
<i>AQP3</i>	0.182131874	0.547327568	0.510462238	3.00511687	2.802706778
<i>DYNC2HI</i>	0.236316738	0.563143959	0.478070273	2.383004957	2.023006396
<i>SVEP1</i>	0.227749682	0.536470287	0.375804843	2.355525951	1.650078449
<i>C15orf27</i>	0.03551154	0.085373062	0.085310086	2.404093496	2.402320095
<i>C22orf24</i>	0.06831771	0.218989549	0.164121007	3.205457995	2.402320095
<i>RNASE4</i>	1.167016222	1.834441302	2.839489425	1.571907286	2.433119071
<i>UBE2Q2L</i>	1.881755073	1.096706698	0.684936064	0.582810544	0.363987893
<i>GPRC5B</i>	0.182480199	0.376028108	0.626251212	2.060651568	3.43188585
<i>PFKFB1</i>	0.097029823	0.038878128	0.038849449	0.400682249	0.400386683
<i>CNTNAP3</i>	4.486344973	11.69650537	13.79886098	2.607134636	3.075746752
<i>TAS2R20</i>	0.445100231	0.285350019	0.106927323	0.641091599	0.24023201
<i>ARR3</i>	0.063011971	0.201982225	0.100916615	3.205457995	1.60154673
<i>EPHB3</i>	0.040375443	0.097066339	0.096994737	2.404093496	2.402320095
<i>EPHA5</i>	0.060699811	0.259427591	0.105314715	4.273943993	1.735008958
<i>TAS2R14</i>	0.089299983	0.357809182	0.214527145	4.006822493	2.402320095
<i>PIK3R1</i>	2.308433378	4.580696236	5.829233072	1.98433114	2.525190082
<i>LKAAEAR1</i>	0.294443033	0.078652064	0.078594046	0.2671215	0.266924455
<i>KLHL38</i>	0.155035822	0.34166056	0.310371392	2.203752371	2.001933413
<i>CCND2</i>	0.052249116	0.157014701	0.073219476	3.00511687	1.401353389
<i>C9orf163</i>	0.09933018	0.185732586	0.212109233	1.869850497	2.13539564
<i>C9orf169</i>	0.32842014	0.684279025	0.631176241	2.083547697	1.921856076
<i>MAML2</i>	0.802682652	1.516897586	1.909113595	1.889784937	2.378416413
<i>MAML3</i>	0.011997209	0.048070689	0.038428183	4.006822493	3.20309346
<i>SLC2A12</i>	0.060862428	0.451150152	0.450817357	7.412621613	7.407153627
<i>ANKRD65</i>	0.038340317	0.092173707	0.061403809	2.404093496	1.60154673
<i>CD177</i>	0.180186515	0.548701289	0.259719411	3.045185095	1.441392057

<i>CD180</i>	0.048349707	0.096864347	0.212944368	2.003411247	4.404253508
<i>ANKRD12</i>	0.097654386	0.210691272	0.216551164	2.157519804	2.217526242
<i>EIF4E3</i>	0.013720758	0.032985984	0.12085939	2.404093496	8.808507015
<i>GRASP</i>	0.027375381	0.153563607	0.087685902	5.609551491	3.20309346
<i>SGCG</i>	0.048764845	0.117235247	0.078099178	2.404093496	1.60154673
<i>NLGN3</i>	0.171025715	0.479688777	0.855955232	2.804775745	5.004833531
<i>NLGN1</i>	0.068758825	0.22827508	0.220240943	3.319938637	3.20309346
<i>FAAH</i>	0.569303379	0.228109758	0.293067632	0.400682249	0.514782878
<i>STAG3</i>	0.01945027	0.062347025	0.093451551	3.205457995	4.80464019
<i>MAP4K1</i>	0.03029594	0.097112364	0.097040728	3.205457995	3.20309346
<i>STAC3</i>	0.154333667	0.371032565	0.37075887	2.404093496	2.402320095
<i>STAC2</i>	0.025997005	0.041666153	0.145723962	1.602728997	5.605413555
<i>SOHLH2</i>	0.155389301	0.062261735	0.031107903	0.400682249	0.200193341
<i>LATS1</i>	0.679996149	1.61661016	1.343156251	2.377381346	1.975240967
<i>ARID3C</i>	0.068758825	0.330605288	0.440481885	4.808186992	6.40618692
<i>FAT2</i>	0.017369618	0.060317378	0.03245463	3.472579494	1.868471185
<i>MPV17L</i>	0.294910201	0.679450375	0.531351526	2.303922934	1.801740071
<i>MFSD2B</i>	0.045146891	0.144716464	0.108457285	3.205457995	2.402320095
<i>PCDHB14</i>	0.086256008	0.32257168	0.207214542	3.739700994	2.402320095
<i>ZFAND4</i>	0.28984517	0.125069339	0.160684818	0.431503961	0.55438156
<i>MAN1C1</i>	0.091782142	0.279493611	0.27928744	3.045185095	3.042938787
<i>SMOC1</i>	0.728917084	2.007940941	2.809043671	2.754690464	3.853721819
<i>PPIL6</i>	0.020054657	0.112497633	0.192710825	5.609551491	9.60928038
<i>FCN2</i>	0.078445842	0.565773414	0.125634681	7.212280488	1.60154673
<i>PCDHA11</i>	0.012440447	0.029907999	0.039847916	2.404093496	3.20309346
<i>PRRT4</i>	0.022657496	0.145255302	0.054430557	6.410915989	2.402320095
<i>JPH3</i>	0.021282084	0.068218828	0.136337011	3.205457995	6.40618692
<i>STON1-GTF2AIL</i>	0.06673017	0.124775442	0.142495315	1.869850497	2.13539564
<i>FRMD5</i>	0.536792858	0.784421702	1.403331941	1.461311733	2.614289515
<i>SI00A8</i>	0.162891366	1.04428286	0.652195335	6.410915989	4.003866825
<i>PPMIN</i>	0.521584801	0.905622343	1.287819584	1.736289747	2.469051209
<i>PPMIJ</i>	0.894667045	1.553401218	2.427886554	1.736289747	2.713731959
<i>PPMIK</i>	0.051709975	0.13467525	0.207039854	2.604434621	4.003866825
<i>PPMIE</i>	0.104131012	0.312925861	0.354387699	3.00511687	3.403286801
<i>TPD52L1</i>	1.837358394	4.417181365	5.836187067	2.404093496	3.176401015
<i>MCOLN2</i>	0.671686078	0.336415861	0.20170062	0.500852812	0.300290012
<i>RASSF5</i>	2.847584057	0.980673918	1.413390166	0.344388049	0.496347127
<i>DCLK1</i>	0.100664285	0.475945826	0.773849069	4.728050542	7.687424304
<i>C5orf42</i>	0.223987338	0.38142794	0.515668897	1.70289956	2.302223424
<i>C5orf54</i>	0.667697917	0.267534703	0.315944145	0.400682249	0.473184261
<i>CRYBB3</i>	0.78973056	0.316431017	0.1580988	0.400682249	0.200193341
<i>CPXMI</i>	0.638941381	1.877424779	2.47296166	2.938336495	3.870404598
<i>CNTFR</i>	0.581233226	1.530418924	1.163590215	2.633054781	2.001933413
<i>SOX15</i>	20.47301414	7.982789593	7.927962974	0.389917652	0.387239657
<i>HOXA7</i>	0.042216147	0.067661043	0.270444527	1.602728997	6.40618692
<i>HOXA4</i>	0.246505163	0.118524292	0.078957907	0.480818699	0.320309346
<i>HOXB9</i>	1.577048948	2.729788646	7.627667111	1.730947317	4.836671125
<i>ELANE</i>	0.066608432	0.320265795	0.106676516	4.808186992	1.60154673
<i>CNTD1</i>	0.103988019	0.06249923	0.020817709	0.601023374	0.200193341

<i>CLSTN3</i>	3.305239259	5.733119918	7.699629277	1.734555192	2.329522516
<i>SERINC2</i>	0.060635007	0.145772225	0.169942144	2.404093496	2.802706778
<i>CCT6B</i>	0.179540957	0.647449871	0.467257754	3.606140244	2.602513436
<i>LOC101929097</i>	0.194354793	0.726828812	1.141317037	3.739700994	5.87233801
<i>STEAP1</i>	0.908370585	0.155986273	0.623484832	0.171720964	0.68637717
<i>DPYSL3</i>	0.031092038	0.087206194	0.074693028	2.804775745	2.402320095
<i>CACNA2D3</i>	0.068262968	0.237048583	0.127547389	3.472579494	1.868471185
<i>FEZ1</i>	0.045900961	0.073566802	0.147025069	1.602728997	3.20309346
<i>TXNIP</i>	6.453516828	2.239495848	2.606972749	0.347019448	0.403961564
<i>BTBD19</i>	0.242614031	0.583266815	0.444065953	2.404093496	1.83033912
<i>BTBD11</i>	0.443709293	0.99560405	2.510861456	2.243820596	5.658798446
<i>LOC101929668</i>	0.162332668	0.182122692	0.493968372	1.121910298	3.042938787
<i>PLSCR4</i>	0.744470005	1.511365974	1.748711802	2.030123397	2.348935204
<i>CASP8AP2</i>	0.352710507	0.686434933	0.756538873	1.946170925	2.144928656
<i>ALDH1L1</i>	0.284923693	0.020757067	0.04148351	0.072851318	0.145595157
<i>TNFRSF14</i>	0.084712149	0.362054979	0.520070115	4.273943993	6.139262465
<i>TNFRSF1B</i>	0.20863392	0.297229897	0.705400277	1.424647998	3.381043097
<i>NBEAL1</i>	0.092691793	0.303872368	0.249666309	3.278309313	2.69351041
<i>GRIK4</i>	0.014800588	0.047442663	0.047407666	3.205457995	3.20309346
<i>GRIP2</i>	0.074758091	0.171167085	0.136832658	2.289612853	1.83033912
<i>CNTN3</i>	0.253246683	0.446474383	0.635418689	1.763001897	2.509089877
<i>CNTN4</i>	0.049092692	0.07868228	0.11793636	1.602728997	2.402320095
<i>TTC36</i>	0.752802806	0.402179629	0.200941479	0.534242999	0.266924455
<i>LOC100507462</i>	0.062826095	0.125866504	0.251547316	2.003411247	4.003866825
<i>TTC16</i>	0.059079185	0.236719806	0.236545187	4.006822493	4.003866825
<i>OPN1SW</i>	0.775885102	1.865300327	1.55327031	2.404093496	2.001933413
<i>LOC101929747</i>	0.12727916	0.509985	0.305765283	4.006822493	2.402320095
<i>SLC4A4</i>	0.594594539	0.114709822	0.246885058	0.192921083	0.415215819
<i>AC022007.5</i>	0.718542408	1.115640354	1.87001627	1.552643716	2.602513436
<i>PLAC9</i>	31.26667087	15.01331176	12.16397599	0.480169821	0.389039692
<i>LOC101929792</i>	0.147774821	0.059210748	0.05916707	0.400682249	0.400386683
<i>MYZAP</i>	0.319737138	0.085408664	0.199139877	0.2671215	0.622823728
<i>ADCY1</i>	0.06134328	0.016386109	0.010916014	0.2671215	0.177949637
<i>ADCY7</i>	0.080827499	0.226703009	0.183386108	2.804775745	2.268857868
<i>FGD6</i>	0.082550566	0.183758592	0.242382413	2.226012496	2.936169005
<i>RSPH4A</i>	0.029704388	0.166628293	0.09514593	5.609551491	3.20309346
<i>NOXRED1</i>	0.096226112	0.051408126	0.025685102	0.534242999	0.266924455
<i>KIAA1407</i>	0.1902083	0.406469811	0.558483715	2.136971996	2.936169005
<i>SLC51A</i>	0.058551329	0.093841913	0.37509076	1.602728997	6.40618692
<i>TIAM2</i>	0.014400302	0.115398905	0.126845158	8.013644987	8.808507015
<i>HMX2</i>	0.156988054	0.167739538	0.50284741	1.068485998	3.20309346
<i>GRHL3</i>	0.089082103	0.166570214	0.190225534	1.869850497	2.13539564
<i>GRHL1</i>	0.115876203	0.130002705	0.371162307	1.121910298	3.20309346
<i>MAGED4B</i>	0.223266675	0.281156837	0.612980595	1.259287069	2.74550868
<i>OAS1</i>	0.804690036	0.252332619	0.308179036	0.313577413	0.382978566
<i>SNCB</i>	0.05875323	0.282496519	0.188192088	4.808186992	3.20309346
<i>SNCA</i>	0.370976852	0.976802374	1.124616018	2.633054781	3.031499168
<i>FGFBP1</i>	0.062687406	0.200941845	0.250992024	3.205457995	4.003866825
<i>RIPK4</i>	3.080295916	6.453206887	11.76929602	2.094995761	3.820832913

<i>FNDC1</i>	1.66457023	3.772513677	3.717662743	2.266358973	2.233406963
<i>CHRD12</i>	0.341965616	0.71935265	1.06111821	2.103581809	3.10299679
<i>CCDC116</i>	0.186334611	0.089593165	0.059684717	0.480818699	0.320309346
<i>CAPS2</i>	0.036037303	0.043318523	0.115430849	1.202046748	3.20309346
<i>CCDC169</i>	0.852632369	0.170817328	0.398279753	0.200341125	0.467117796
<i>CCDC153</i>	0.219379015	0.937613624	1.229710105	4.273943993	5.605413555
<i>CCDC150</i>	0.092474555	0.277896847	0.203640693	3.00511687	2.202126754
<i>CCDC147</i>	0.231430624	0.061820095	0.144140484	0.2671215	0.622823728
<i>CCDC175</i>	0.065281367	0.026157085	0.02613779	0.400682249	0.400386683
<i>PLCE1</i>	1.339009462	2.278361235	3.47377392	1.70152736	2.594286313
<i>NHLRC4</i>	0.041679151	0.133600767	0.133502215	3.205457995	3.20309346
<i>RIPPLY2</i>	0.384904447	1.439427542	1.130144506	3.739700994	2.936169005
<i>LOC101929571</i>	0.87927713	1.80069933	1.721137505	2.047931497	1.957446003
<i>ENKUR</i>	0.025189883	0.040372556	0.060514162	1.602728997	2.402320095
<i>CSF1R</i>	0.042713554	0.102687378	0.171019383	2.404093496	4.003866825
<i>KIAA1644</i>	0.416618565	1.51756058	1.13227605	3.642565903	2.717776269
<i>1-Mar</i>	0.015483858	0.037224641	0.061995304	2.404093496	4.003866825
<i>DDX60L</i>	0.172553614	0.483974191	0.473747445	2.804775745	2.74550868
<i>SOX7</i>	2.754841832	0.999682616	1.602474578	0.362882037	0.58169386
<i>SOX4</i>	2.147702123	4.78547597	4.642122941	2.228184216	2.16143705
<i>CREBRF</i>	0.085394997	0.205297558	0.264980403	2.404093496	3.10299679
<i>ERO1LB</i>	0.084281939	0.202621662	0.269962928	2.404093496	3.20309346
<i>MAGEB17</i>	0.875048114	2.253961584	2.102145667	2.57581446	2.402320095
<i>KIAA1109</i>	0.27141438	0.712211935	0.677593796	2.624075907	2.496528726
<i>SPATA1</i>	0.199140216	0.095750339	0.031893236	0.480818699	0.160154673
<i>ITGAM</i>	0.017954096	0.02877555	0.115017293	1.602728997	6.40618692
<i>ITGB4</i>	14.64747301	28.79698983	34.77022449	1.966003953	2.373803623
<i>ITGB8</i>	0.165007079	0.707823775	0.792799643	4.289657022	4.80464019
<i>ITGA4</i>	1.876973476	4.063422739	5.462505885	2.164880213	2.910273349
<i>ITGA2</i>	2.55253447	3.883880707	7.494672594	1.521578162	2.936169005
<i>ITGA7</i>	0.832620192	1.698409396	2.727573026	2.039836906	3.275891039
<i>LRRC16B</i>	0.03704008	0.05936521	0.133473193	1.602728997	3.603480143
<i>DDR1</i>	6.626058771	12.38973929	14.23347878	1.869850497	2.148106328
<i>RP11-35G9.3</i>	0.128948816	0.34445001	0.58513307	2.671214996	4.537715735
<i>MAGEA12</i>	0.457530527	1.026616421	2.01508043	2.243820596	4.404253508
<i>LOC101927402</i>	0.070406764	0.02821074	0.028189931	0.400682249	0.400386683
<i>LOC101927562</i>	0.321884827	0.472902967	1.28878398	1.469168248	4.003866825
<i>CIQTNF6</i>	0.124732334	0.359841832	0.199764662	2.884912195	1.60154673
<i>KIAA1024</i>	0.037908121	0.091134667	0.091067441	2.404093496	2.402320095
<i>GRAMD1C</i>	0.1585603	0.290433361	0.435328681	1.831690283	2.74550868
<i>CXorf22</i>	0.188634784	0.037791305	0.094408569	0.200341125	0.500483353
<i>NLRC4</i>	0.02524961	0.101170705	0.060657646	4.006822493	2.402320095
<i>SLC22A31</i>	0.120271319	0.032127055	0.032103356	0.2671215	0.266924455
<i>LRRC37A</i>	0.013954494	0.055913179	0.044697548	4.006822493	3.20309346
<i>IQGAP2</i>	0.043778101	0.175411079	0.233708914	4.006822493	5.3384891
<i>ABCA1</i>	0.67323158	1.209008713	2.104461656	1.795828877	3.125910485
<i>ZBTB8B</i>	0.211973586	0.492617509	0.458305565	2.323957046	2.162088086
<i>SRPX</i>	3.044176839	5.488864305	7.958359594	1.803070122	2.614289515
<i>FABP3</i>	0.232977714	1.369133841	0.559687045	5.87667299	2.402320095

<i>ZBTB20</i>	0.009223926	0.014783454	0.036931373	1.602728997	4.003866825
<i>ITIH4</i>	0.051898985	0.124770013	0.249355595	2.404093496	4.80464019
<i>ZBTB41</i>	0.100533614	0.265861427	0.193211136	2.644502846	1.921856076
<i>IL12A</i>	0.236152971	0.283866911	0.803696288	1.202046748	3.403286801
<i>ST8SIA4</i>	0.282985743	0.129585559	0.151071631	0.457922571	0.53384891
<i>ST8SIA6</i>	0.060142735	0.096392505	0.144482101	1.602728997	2.402320095
<i>ST8SIA1</i>	0.008770042	0.091364	0.105342236	10.41773848	12.01160048
<i>DAPK2</i>	0.030777523	0.086324051	0.110906194	2.804775745	3.603480143
<i>ACE</i>	0.154302608	0.384697077	0.906117068	2.493133996	5.87233801
<i>SSPN</i>	0.018793775	0.090363987	0.150495548	4.808186992	8.00773365
<i>GARNL3</i>	0.227908465	0.566177034	0.693511508	2.484229946	3.042938787
<i>LOC101927371</i>	0.05457539	0.437347803	0.655537784	8.013644987	12.01160048
<i>MOB3B</i>	0.026112547	0.125554008	0.20910232	4.808186992	8.00773365
<i>NOTCH4</i>	0.02523839	0.050562874	0.080840921	2.003411247	3.20309346
<i>AK7</i>	0.051631627	0.206878764	0.124035695	4.006822493	2.402320095
<i>UGT3A2</i>	0.035719993	0.114498938	0.171621716	3.205457995	4.80464019
<i>RCAN2</i>	0.124622856	0.33955233	0.518932251	2.724639295	4.164021498
<i>C16orf45</i>	9.694809492	16.57810737	26.43816384	1.709998261	2.727043153
<i>BAI2</i>	4.200611852	10.26256204	11.98095476	2.443111243	2.852192772
<i>AMN</i>	0.16414679	0.043847137	0.043814793	0.2671215	0.266924455
<i>TRAF5</i>	0.252969026	0.483410176	0.5921302	1.910946112	2.340722144
<i>NFAT5</i>	0.700884409	1.857032838	1.658467188	2.649556496	2.366249223
<i>LOC102723974</i>	0.12205184	0.489040057	0.586415175	4.006822493	4.80464019
<i>MAP7</i>	0.055463662	0.118524292	0.222069115	2.136971996	4.003866825
<i>SLC2A1</i>	63.51112152	32.36778911	24.48099601	0.509639703	0.385459986
<i>SLC2A4</i>	0.081161179	0.151759271	0.368286359	1.869850497	4.537715735
<i>SLC2A5</i>	0.069886944	0.476041782	0.251836213	6.811598239	3.603480143
<i>ABCC6</i>	0.066595415	0.200127004	0.479950509	3.00511687	7.206960285

---

**Table S5: Correlation analysis of the gene expression between c-Myc targets and LacRNA, TCGA database, n=1094**

Gene Name	Pearson correlation coefficient	-LOG10(FDR)	<i>P</i> value (two-tailed)
CDC20	-0.2353	12.99999218	1.00002E-13
CDC45	-0.2837	13	1E-13
VBP1	-0.2538	12.99999409	1.00001E-13
IFRD1	0.07467	1.869666232	0.0135
CCT2	-0.2463	12.99999661	1.00001E-13
CCT5	-0.223	11.99995093	1.00011E-12
NPM1	-0.1433	4.217443535	6.06117E-05
DUT	-0.2134	11.14532967	7.156E-12
NOP16	-0.1696	8.097040321	7.9976E-09
RAN	-0.2833	13	1E-13
MRPL9	-0.1346	6.807014621	1.5595E-07
CCNA2	-0.243	13	1E-13
PSMA4	-0.1686	8.847011843	1.42229E-09
EEF1B2	0.096415	2.804931004	0.001567
AP3S1	0.086	2.332080315	0.004655
SNRPB2	-0.138956	5.301029996	0.000005
LSM7	-0.106716	3.335358024	0.000462
PCNA	-0.343797	13	1E-13
CCT4	-0.164508	6.224025669	0.000000597
PPIA	-0.179203	7.468859709	3.39735E-08
PSMA7	-0.253531	12.9998541	1.00034E-13
AIMP2	-0.242792	12.99682457	1.00734E-13
EIF4A1	-0.171278	7.783886903	1.6448E-08
SRM	-0.061536	1.357782871	0.043875
TRA2B	-0.118951	4.026872146	0.000094
NME1	-0.21612	12.0308055	9.31525E-13
ODC1	-0.010256	0.132416441	0.737197
RFC4	-0.25069	12.99966546	1.00077E-13
PWP1	-0.099451	2.956244873	0.001106
RPS5	0.012517	0.166133487	0.682129
PSMA2	-0.179313	8.477881936	3.3275E-09
RRP9	-0.182122	7.729093015	1.86598E-08
POLD2	-0.282565	15	1E-13
MAD2L1	-0.329241	15	1E-13
CDKN1A	0.081253	2.110810388	0.007748

**Table S6: Univariate and multivariate Cox regression analysis of OS and DFS in patients with breast cancer**

Covariates	Univariate analysis		Multivariate analysis	
	HR (95% CI)	P-value	HR (95% CI)	P-value
<b>DFS</b>				
<b>Age</b>	1.213	0.335	—	
≤50 versus >50 years	(0.819-1.798)			
<b>T stage</b>	1.952	<b>0.006</b>	1,620	0.094
T2/3 versus T1	(1.211-3.144)		(0,921-2.847)	
<b>pN stage</b>		<b>0.000</b>		<b>0.000</b>
N1 versus N0	2.307	<b>0.002</b>	1.652	0.103
	(1.353-3.935)		(0.903-3.023)	
N2 versus N0	3.535	<b>0.000</b>	3.991	<b>0.000</b>
	(1.846-6.772)		(2.025-7.869)	
N3 versus N0	5.934	<b>0.000</b>	4.16	<b>0.000</b>
	(3.491-10.086)		(2.246-7.707)	
<b>ER</b>	0.752	0.197	—	
positive versus negative	(0.488-1.159)			
<b>HER2</b>	1.181	0.456	—	
positive versus negative	(0.763-1.828)			
<b>Ki-67</b>	1.508	0.189	—	
positive versus negative	(0.817-2.784)			
<b>Subtype</b>		0.179		0.634
ER <sup>+</sup> /HER <sup>+</sup> versus ER <sup>+</sup> /HER2 <sup>-</sup>	1.745	<b>0.047</b>	1.48	0.202
	(1.008-3.020)		(0.811-2.703)	
ER <sup>-</sup> /HER <sup>+</sup> versus ER <sup>+</sup> /HER2 <sup>-</sup>	1.451	0.253	1.229	0.549
	(0.766-2.749)		(0.626-2.414)	
ER <sup>-</sup> /HER <sup>-</sup> versus ER <sup>+</sup> /HER2 <sup>-</sup>	1.51	0.192	1.264	0.524
	(0.813-2.805)		(0.615-2.597)	
<b>Grade</b>	1.65	<b>0.016</b>	1.472	0.119
G3 versus G1+G2	(1.104-2.610)		(0.905-2.393)	
<b>LacRNA expression level</b>	0.483	<b>0.001</b>	0.483	<b>0.006</b>
high versus low	(0.312-0.749)		(0.287-0.811)	
<b>OS</b>				
<b>Age</b>	1.413	0.261	—	
≤50 versus >50 years	(0.773-2.584)			
<b>T stage</b>	2.562	<b>0.013</b>	1.787	0.211
T2/3 versus T1	(1.191-5.512)		(0.720-4.435)	
<b>pN stage</b>		<b>0.000</b>		<b>0.000</b>
N1 versus N0	3.972	<b>0.003</b>	3.847	<b>0.008</b>
	(1.584-9.958)		(1.422-10.411)	



N2 versus N0	6.424 (2.252-18.324)	<b>0.001</b>	8.983 (2.916-27.675)	<b>0.000</b>
N3 versus N0	12.173 (5.081-29.164)	<b>0.000</b>	8.447 (3.095-23.051)	<b>0.000</b>
<b>ER</b> positive versus negative	0.561 (0.306-1.026)	0.061	—	
<b>HER2</b> positive versus negative	1.606 (0.878-2.937)	0.124	—	
<b>Ki-67</b> positive versus negative	1.586 (0.657-3.832)	0.305	—	
<b>Subtype</b>		0.066		0.154
ER <sup>+</sup> /HER <sup>+</sup> versus ER <sup>+</sup> /HER2 <sup>-</sup>	2.355 (1.087-5.104)	<b>0.030</b>	2.369 (.011-5.547)	<b>0.047</b>
ER <sup>-</sup> /HER <sup>+</sup> versus ER <sup>+</sup> /HER2 <sup>-</sup>	1.904 (0.755-4.802)	0.172	1.737 (0.645-4.674)	0.274
ER <sup>-</sup> /HER <sup>-</sup> versus ER <sup>+</sup> /HER2 <sup>-</sup>	2.488 (1.080-5.733)	<b>0.032</b>	2.569 (0.953-6.930)	0.062
<b>Grade</b> G3 versus G1+G2	3.124 (1.817-6.502)	<b>0.000</b>	1.878 (0.908-3.881)	0.089
<b>LacRNA expression level</b> high versus low	0.338 (0.171-0.667)	<b>0.002</b>	0.318 (0.135-0.750)	<b>0.009</b>

Abbreviations: CI, confidence interval; HR, hazard ratio; DFS, disease-free survival; OS, overall survival;

BC, breast cancer.