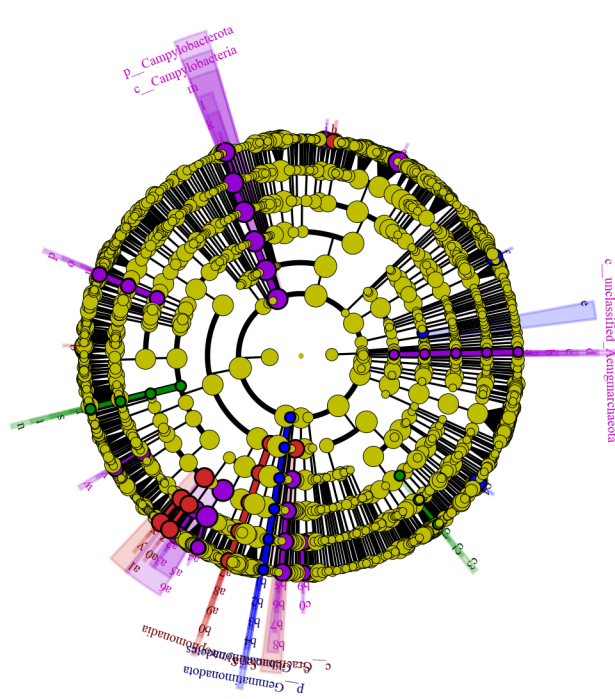


A

## Cladogram

KAB  
KCC  
KHP  
KZ



a: s\_unclassified\_Aenigmarchaeota  
 b: g\_unclassified\_Aenigmarchaeota  
 c: f\_unclassified\_Aenigmarchaeota  
 d: o\_unclassified\_Aenigmarchaeota  
 e: o\_Subgroup\_2  
 f: s\_Peptidiphaga\_gingivicola  
 g: s\_Prevotella\_conceptionensis  
 h: s\_uncultured\_eubacterium\_E1\_K10  
 i: s\_Tannerella\_sp\_oral\_taxon\_BU063\_isolate\_Cell\_2  
 j: s\_Campylobacter\_conciscus  
 k: g\_Campylobacter  
 l: f\_Campylobacteraceae  
 m: o\_Campylobacteriales  
 n: s\_uncultured\_rumen\_bacterium  
 o: g\_uncultured\_rumen\_bacterium  
 p: f\_uncultured\_rumen\_bacterium  
 q: s\_Lachnoanaerobaculum\_cf\_saburreum\_oral\_strain\_C27KA  
 r: s\_unclassified\_Monoglobus  
 s: g\_Monoglobus  
 t: f\_Monoglobaceae  
 u: o\_Monoglobales  
 v: s\_Peptostreptococcaceae\_bacterium\_feline\_oral\_taxon\_135  
 w: g\_Annipila  
 x: s\_Filifactor\_alocis  
 y: g\_Filifactor  
 z: s\_Eubacterium\_yurii\_group  
 a0: g\_Eubacterium\_yurii\_group  
 a1: f\_Peptostreptococcaceae  
 a2: s\_Centipeda\_periodontii  
 a3: g\_Centipeda  
 a4: s\_Selenomonas\_sp\_oral\_taxon\_920  
 a5: g\_Selenomonas  
 a6: f\_Selenomonadaceae  
 a7: s\_Syntrophomonadaceae\_genomosp\_P1  
 a8: g\_Pelospora  
 a9: f\_Syntrophomonadaceae  
 b0: o\_Syntrophomonadales  
 b1: s\_unclassified\_Gemmatimonadaceae  
 b2: g\_unclassified\_Gemmatimonadaceae  
 b3: f\_Gemmatimonadaceae  
 b4: o\_Gemmatimonadales  
 b5: s\_unclassified\_SR1\_bacterium\_human\_oral\_taxon\_HOT\_345  
 b6: g\_unclassified\_SR1\_bacterium\_human\_oral\_taxon\_HOT\_345  
 b7: f\_SR1\_bacterium\_human\_oral\_taxon\_HOT\_345  
 b8: o\_Absconditibacteriales\_SR1  
 b9: s\_unclassified\_TM7\_bacterium\_human\_oral\_taxon\_HOT\_869  
 c0: g\_TM7\_bacterium\_human\_oral\_taxon\_HOT\_869  
 c1: s\_unclassified\_MND1  
 c2: g\_MND1  
 c3: f\_Nitrosomonadaceae  
 c4: s\_Haemophilus\_haemolyticus

B

