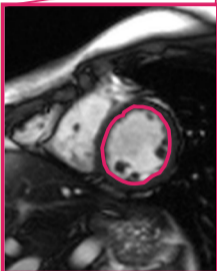
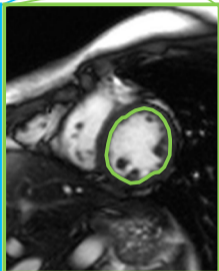
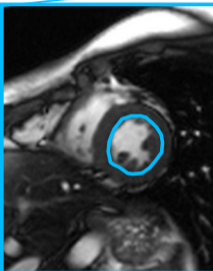
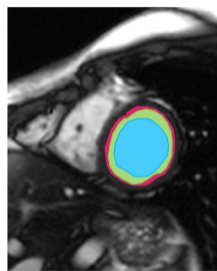


Cine images (25 phases / cardiac cycle)

End-diastole End-systole 30%-diastole End-diastole



Tracking of LV endomyocardial contours



Systolic index (%)

$$\left[\frac{\text{Red} - \text{Light Blue}}{\text{Red}} \right] \times 100$$

Diastolic index (%)

$$\left[\frac{\text{Green} - \text{Light Blue}}{\text{Red} - \text{Light Blue}} \right] \times 100$$