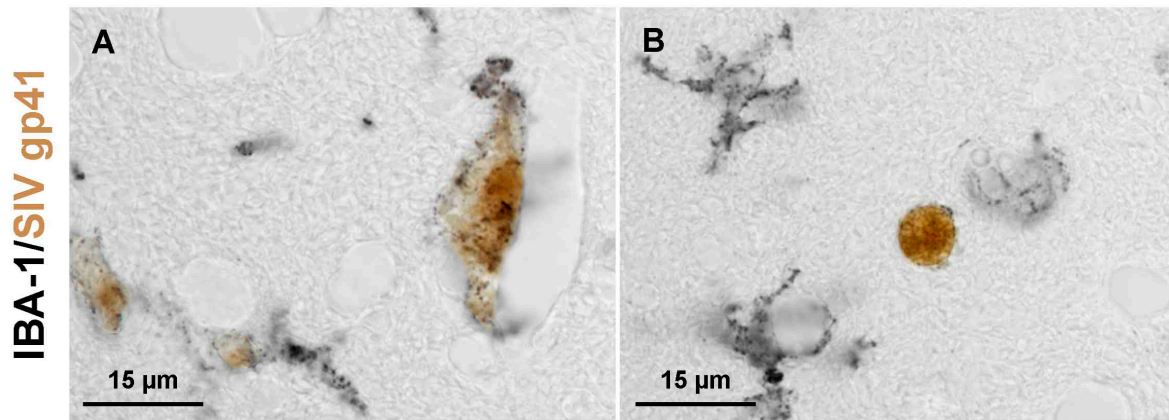
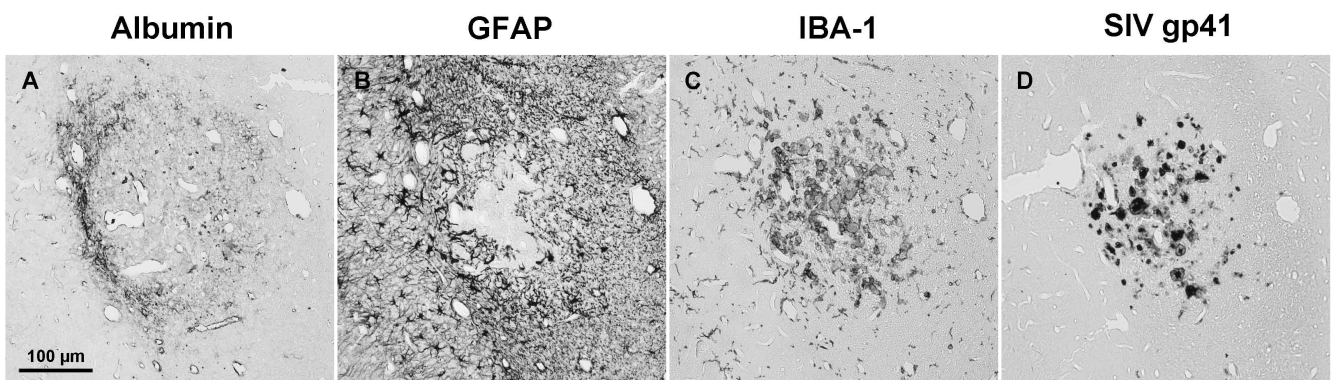


SUPPLEMENTARY MATERIAL



Supplementary figure 1 Colocalization of IBA-1/SIV gp41. SIV gp41⁺ cells are of monocytic origin, visualised with IBA-1.



Supplementary figure 2 Breakdown of BBB. Consecutive sections showing macromolecular breakdown of BBB. Parenchymal albumin accumulation (A) is associated with rarefication of astrocytic structures (B) and accumulation of infected monocytic cells (C, D).

Supplementary table 1 Neuroinflammatory activity score. Reaction of IBA-1⁺ cells of monocytic origin in the cerebellum during SIV infection. Features like cell shape (ramified vs. ameboid), dissemination (focally vs. diffuse) and density of multinucleated giant cells (MNGC) and microglial nodules were visualised with IBA-1, scored and summed up.

Neuroinflammatory activity score										
Cell shape			MNGC			Microglial nodules			Total	
	ramified	ameboid		none	<5/cm ²	>5/cm ²	none	<3/cm ²	>3/cm ²	0-6
		focally	diffuse							
Score	0	1	2	0	1	2	0	1	2	