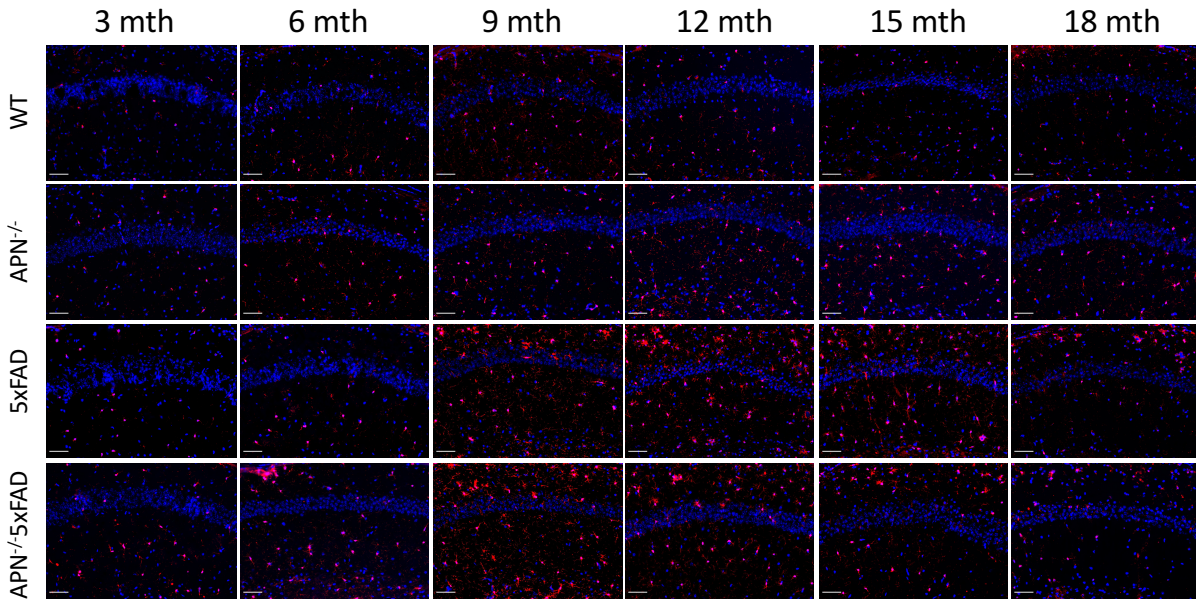
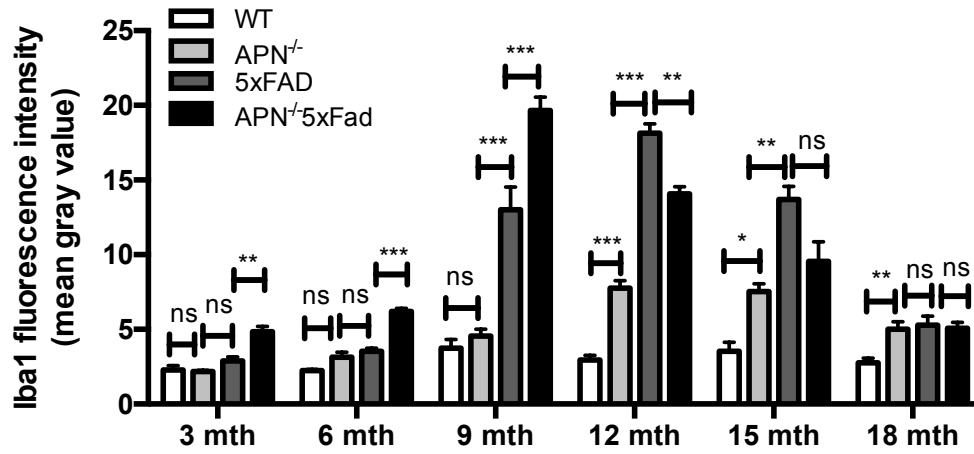


Supplementary Figure 1

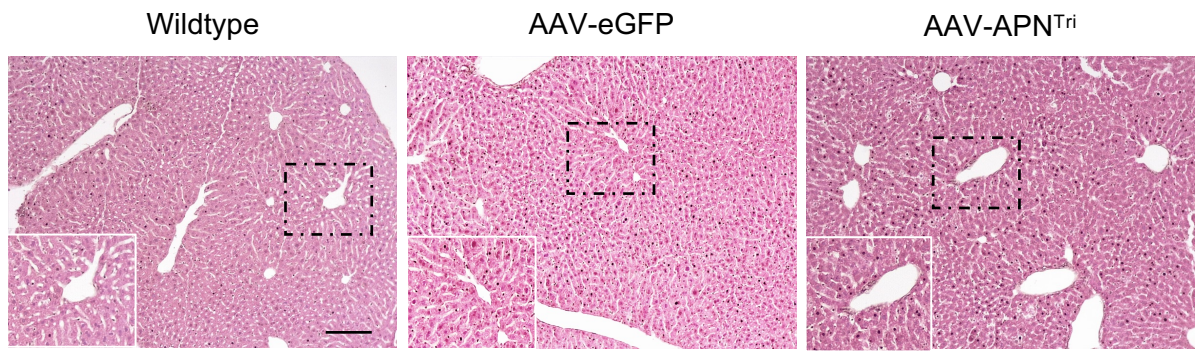
A



B

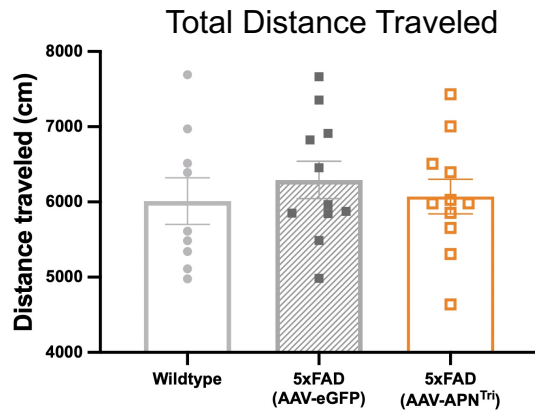


Supplementary Figure 2

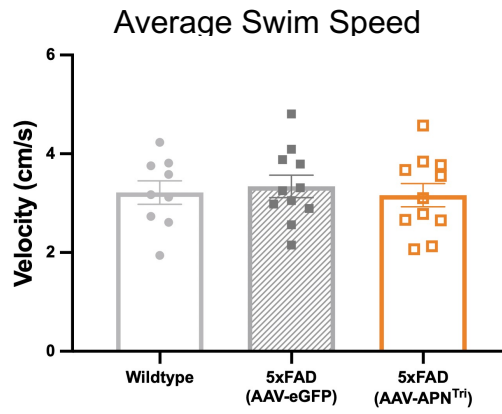


Supplementary Figure 3

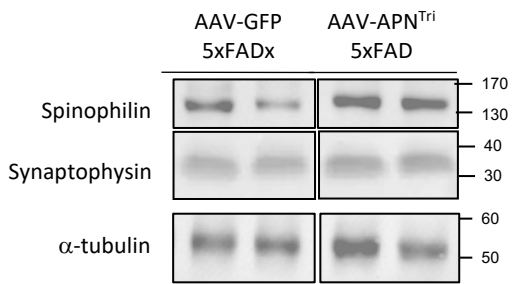
A



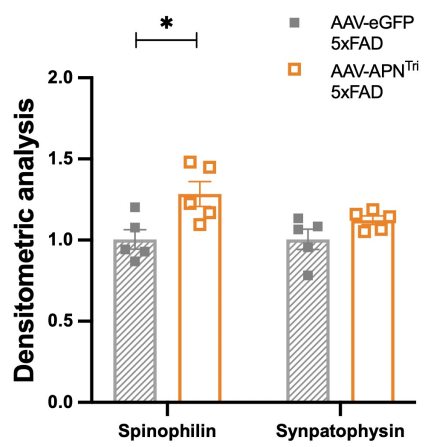
B



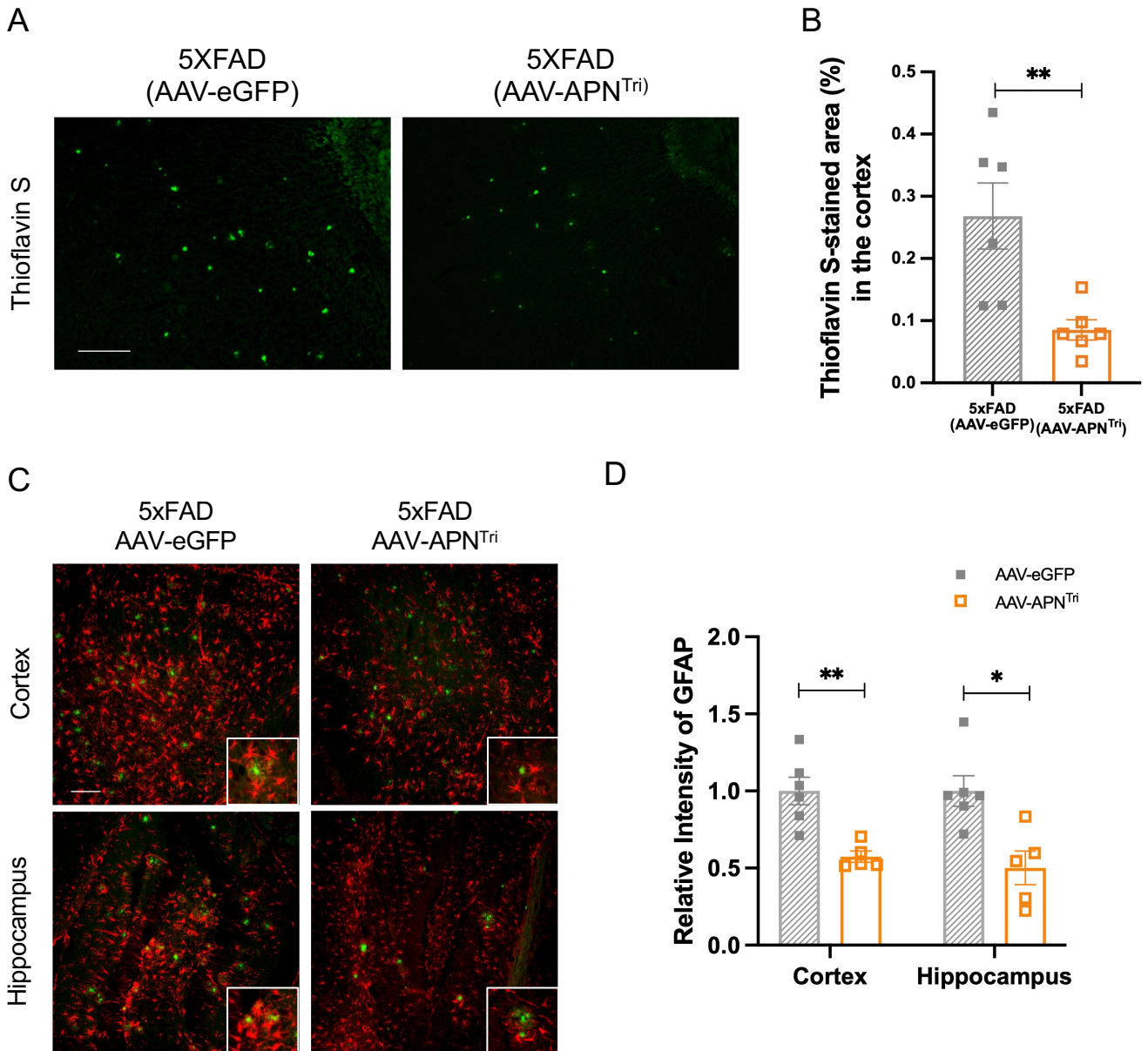
C



D



Supplementary Figure 4



Supplementary Table 1. Body Weights, Weight Changes and Liver Weights 20 weeks after AAV2/8 administration

	Wildtype	5xFAD	5xFAD (AAV-eGFP)	5xFAD (AAV-APN ^{Tri})
Weight (g)	30.600 ± 0.675	28.541 ± 0.799	28.490 ± 0.377	29.403 ± 0.797
Weight Change (g)	1.85 ± 0.3252	0.9075 ± 0.4844	0.7573 ± 0.3975	0.9522 ± 0.1407
Liver (g)	1.720 ± 0.025	1.600 ± 0.384	1.657 ± 0.020	1.682 ± 0.019
Liver weight / Body Weight (mg/g)	59.96 ± 1.07	56.16 ± 1.06	58.25 ± 0.89	57.49 ± 1.14