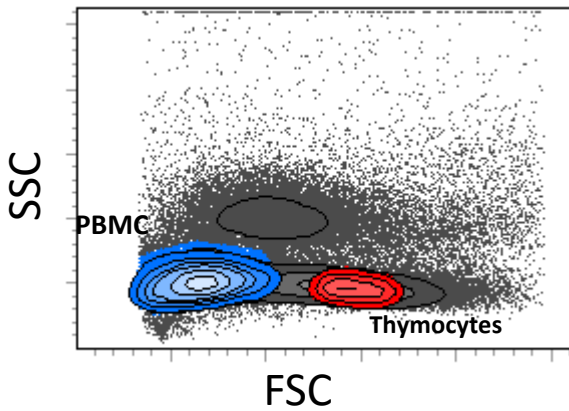
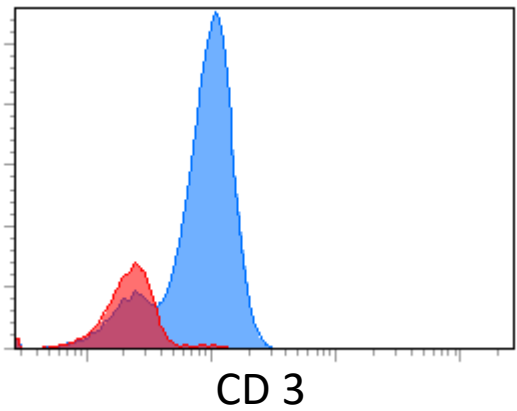


Supplemental figure

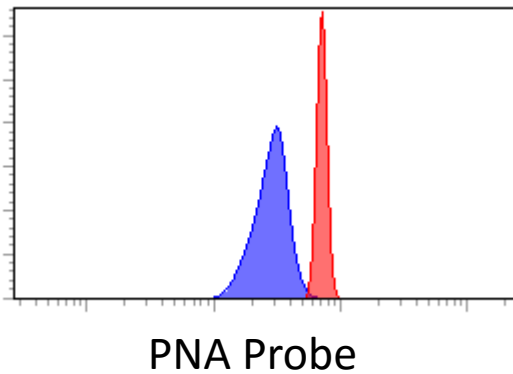
A.



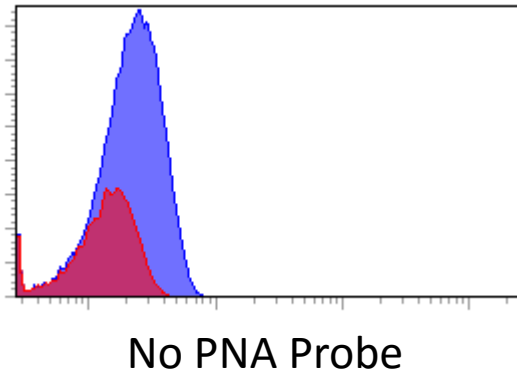
B.



C.



D.



Flowcytometric analysis of telomere length.

Example of flowcytometric analysis of telomere length by flow-FISH, where calf thymocytes (red) can be distinguished from lymphocytes (blue), not only by forward and sideward scatter (left panel) but also by the lack of CD3 expression (right panel) (A&B). The cells were either hybridized to the peptide nucleic acid (PNA) probe (D) or underwent the same experimental conditions without the PNA probe (c) to account for the level of autofluorescence.