

Supplemental Figures

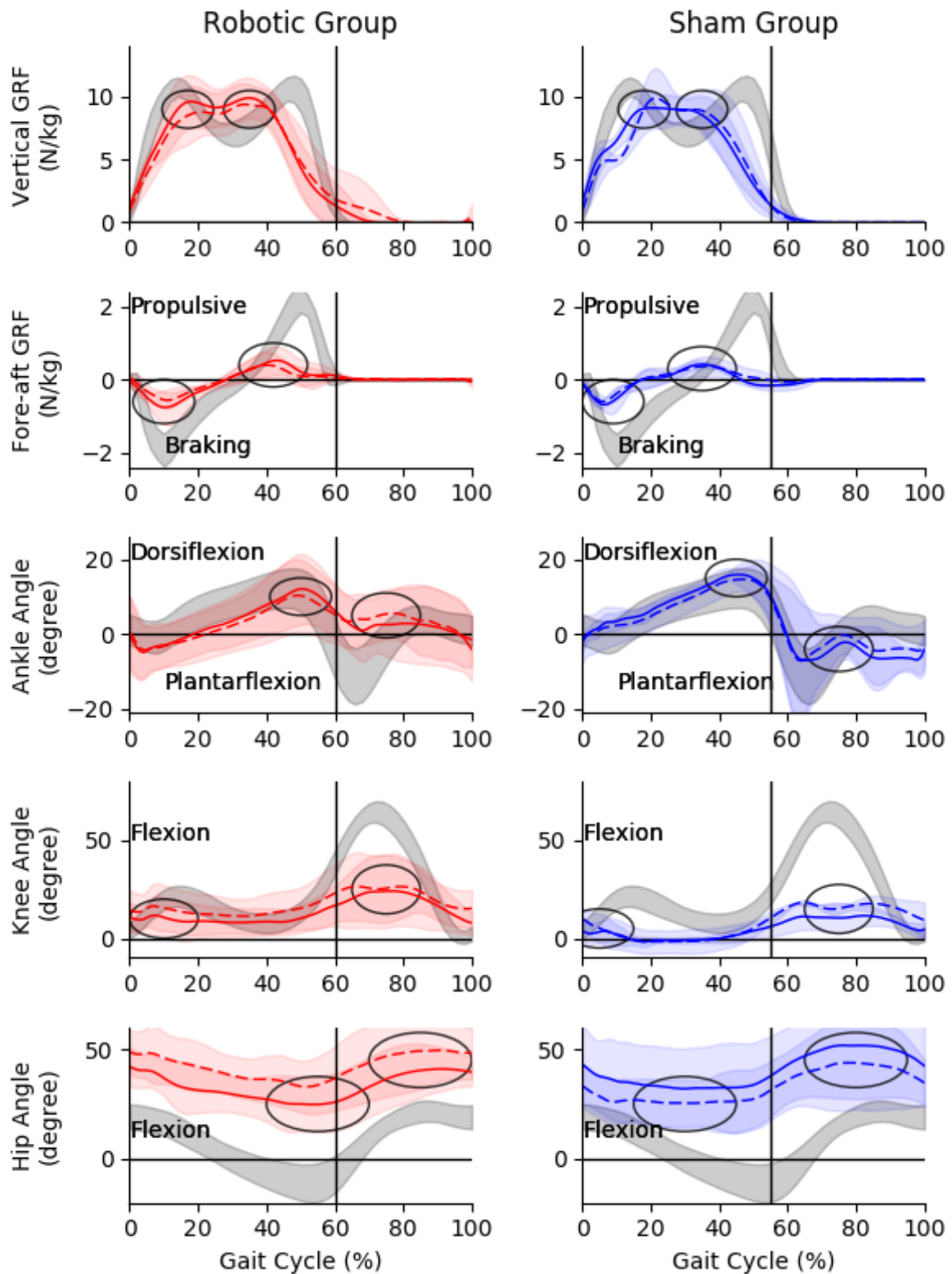


FIGURE I. Affected side kinetic and kinematic gait pattern in the gait analysis before (Pre: dashed line) and after (Post: solid line) the gait training. Local maxima and point of interests were circled. Gait patterns of healthy subject were shaded in grey for reference.

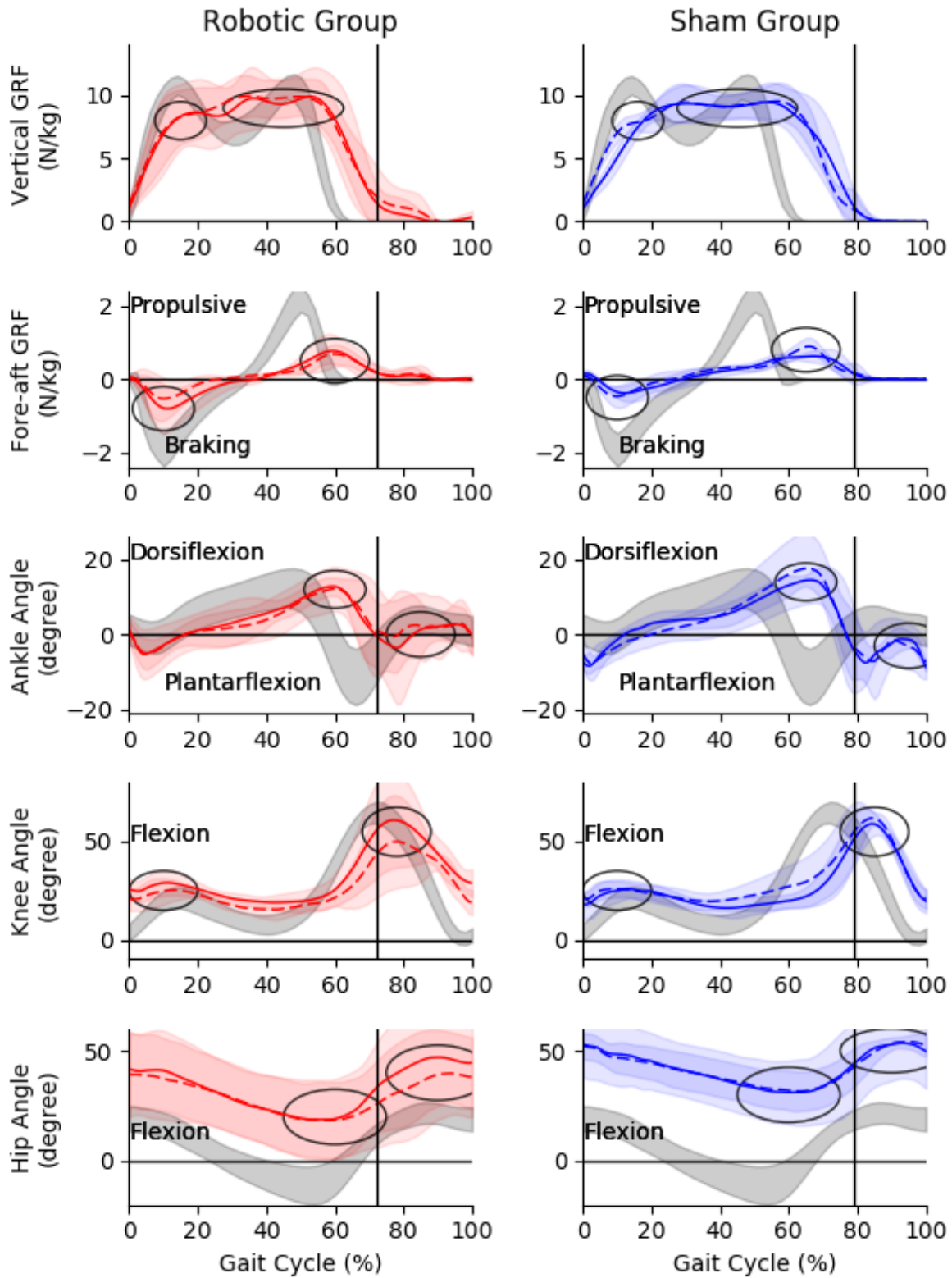


FIGURE II. Unaffected side kinetic and kinematic gait pattern in the gait analysis before (Pre: dashed line) and after (Post: solid line) the gait training. Local maxima and point of interests were circled. Gait patterns of healthy subject were shaded in grey for reference.