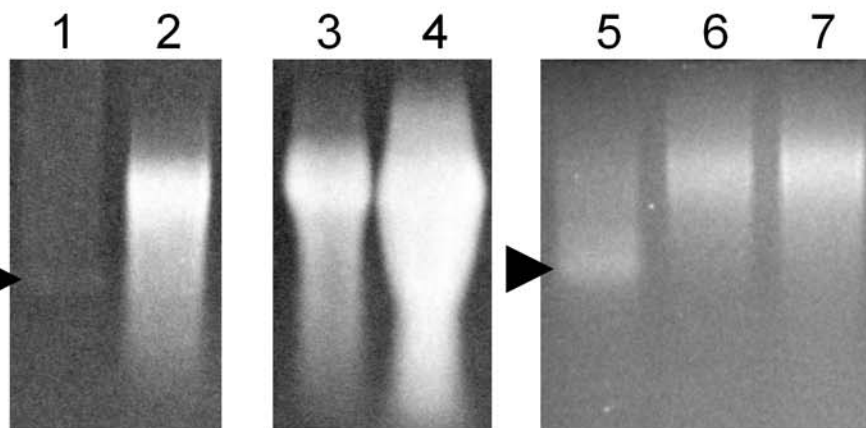


A



B

2601
 AGGCTCTCTCAAT **TATCTGTT** TGTTTTTACTGGAAGCGCT

C

| | PTH signal | |
|--------------|----------------------------|----------------------------------|
| | conserved seq. | T-rich seq. |
| original seq | TATCTGTT | TGTTTTT |
| del PTH5 | TAC CCT A TT | CGT G T TTC |
| del PTH2 | TAC CCT A TT | TGTTTTT |

D

