

Segment 1 (PB2)

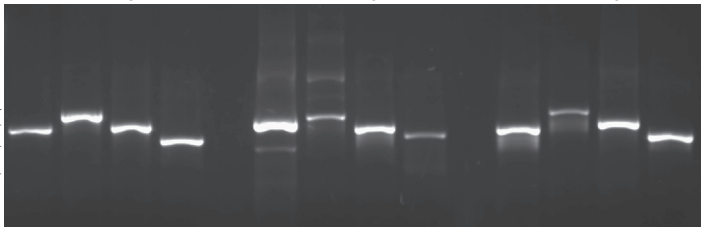
A B C D

Segment 2 (PB1)

A B C D

Segment 3 (PA)

A B C D

1kb
800bp
600bp
400bp**Segment 4 (HA)**

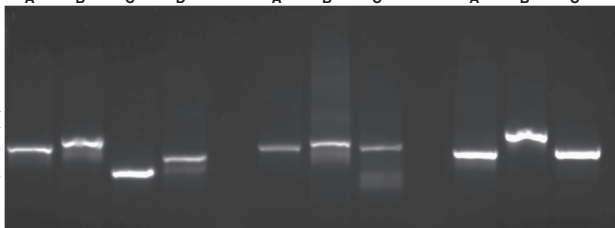
A B C D

Segment 5 (NP)

A B C

Segment 6 (NA)

A B C

1kb
800bp
600bp
400bp**Segment 7 (M)**

A B

Segment 8 (NS)

A B

1kb
800bp
600bp
400bp