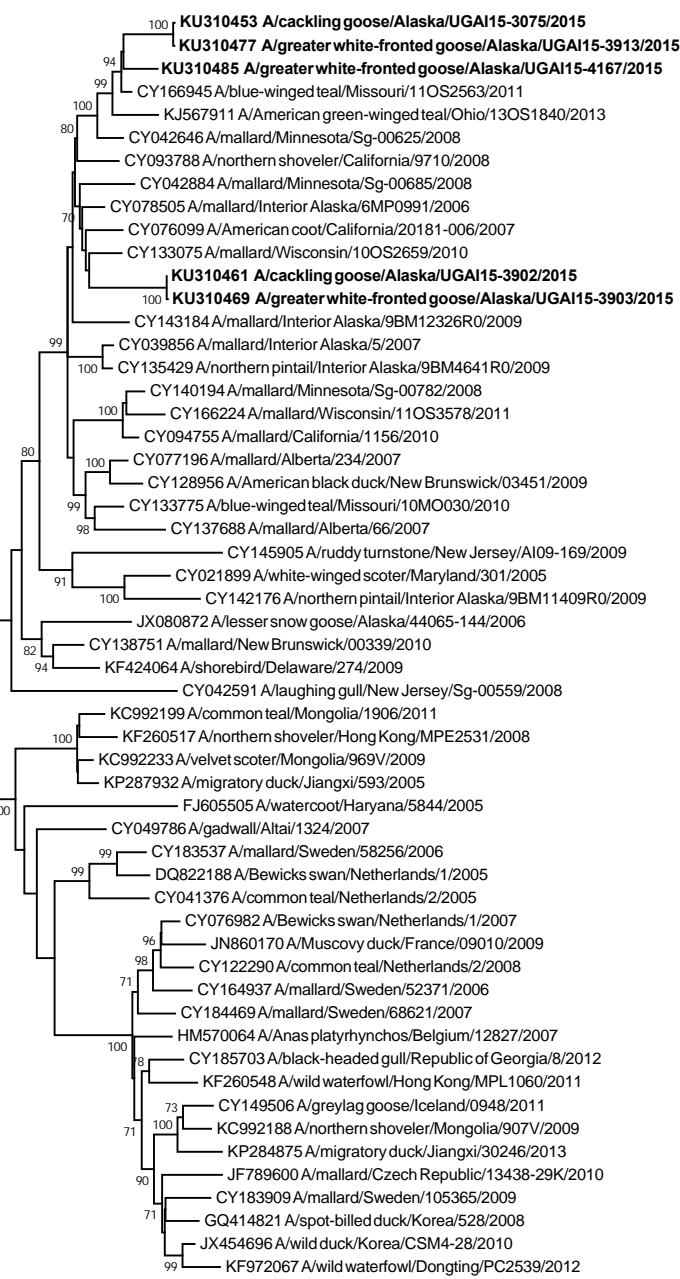
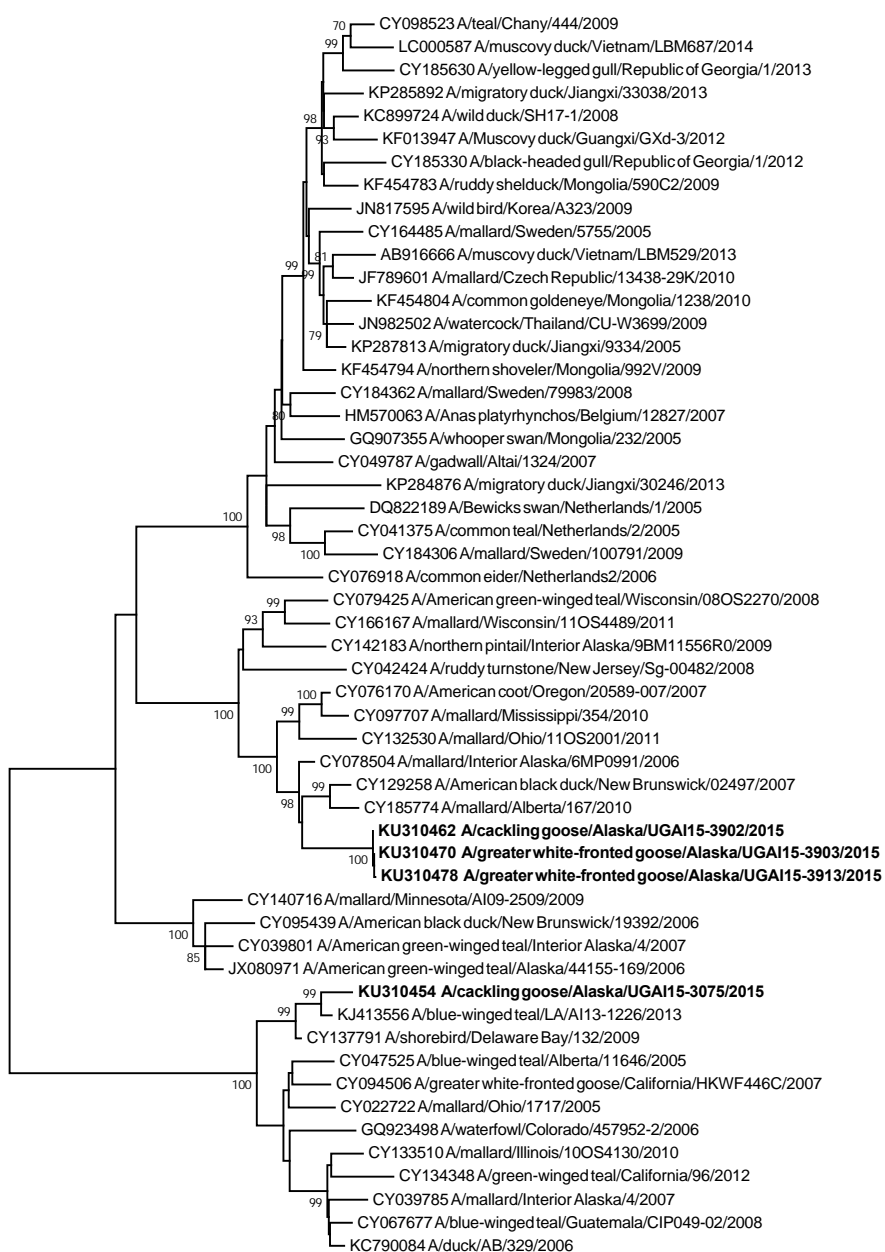


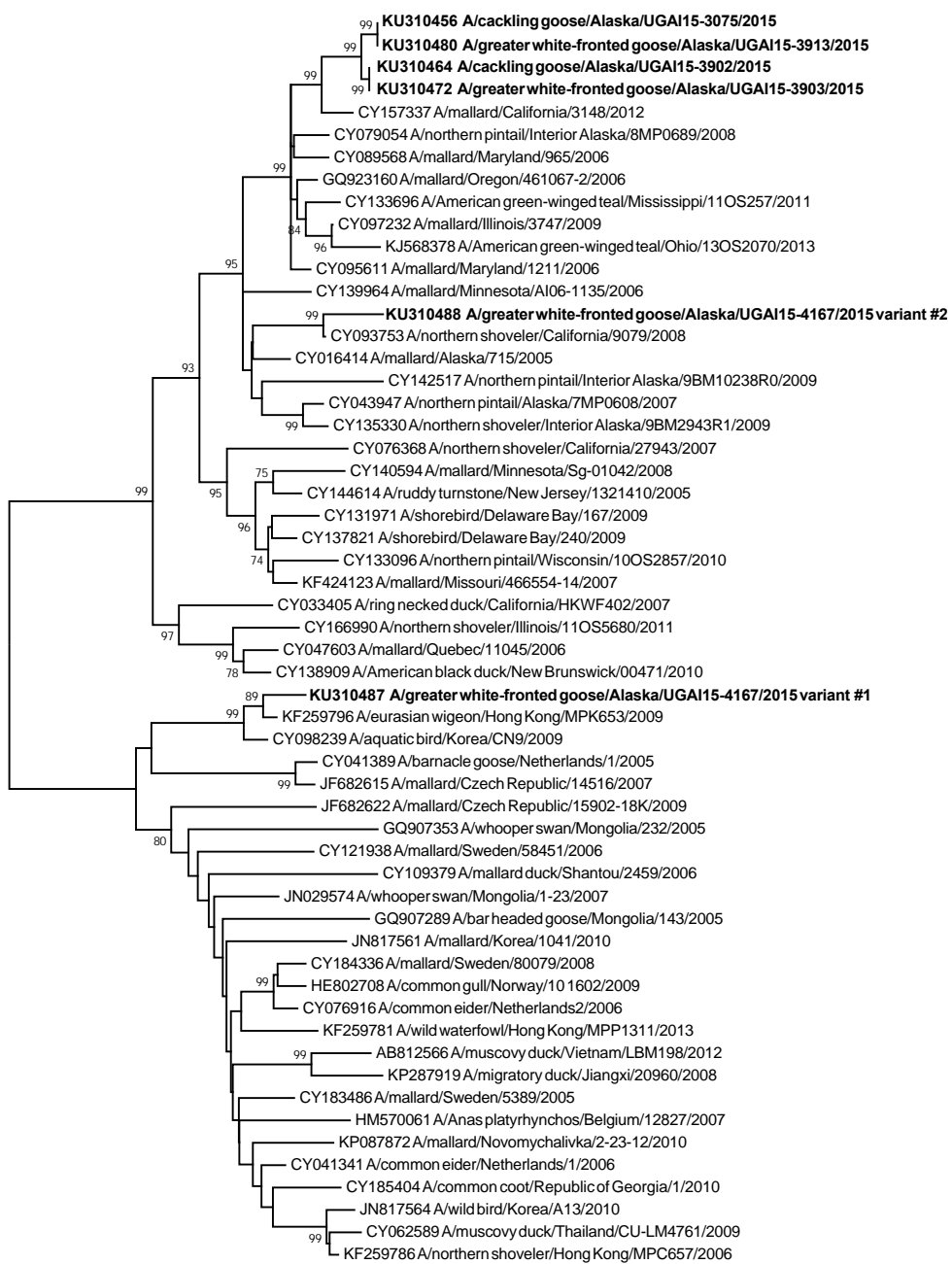
0.05



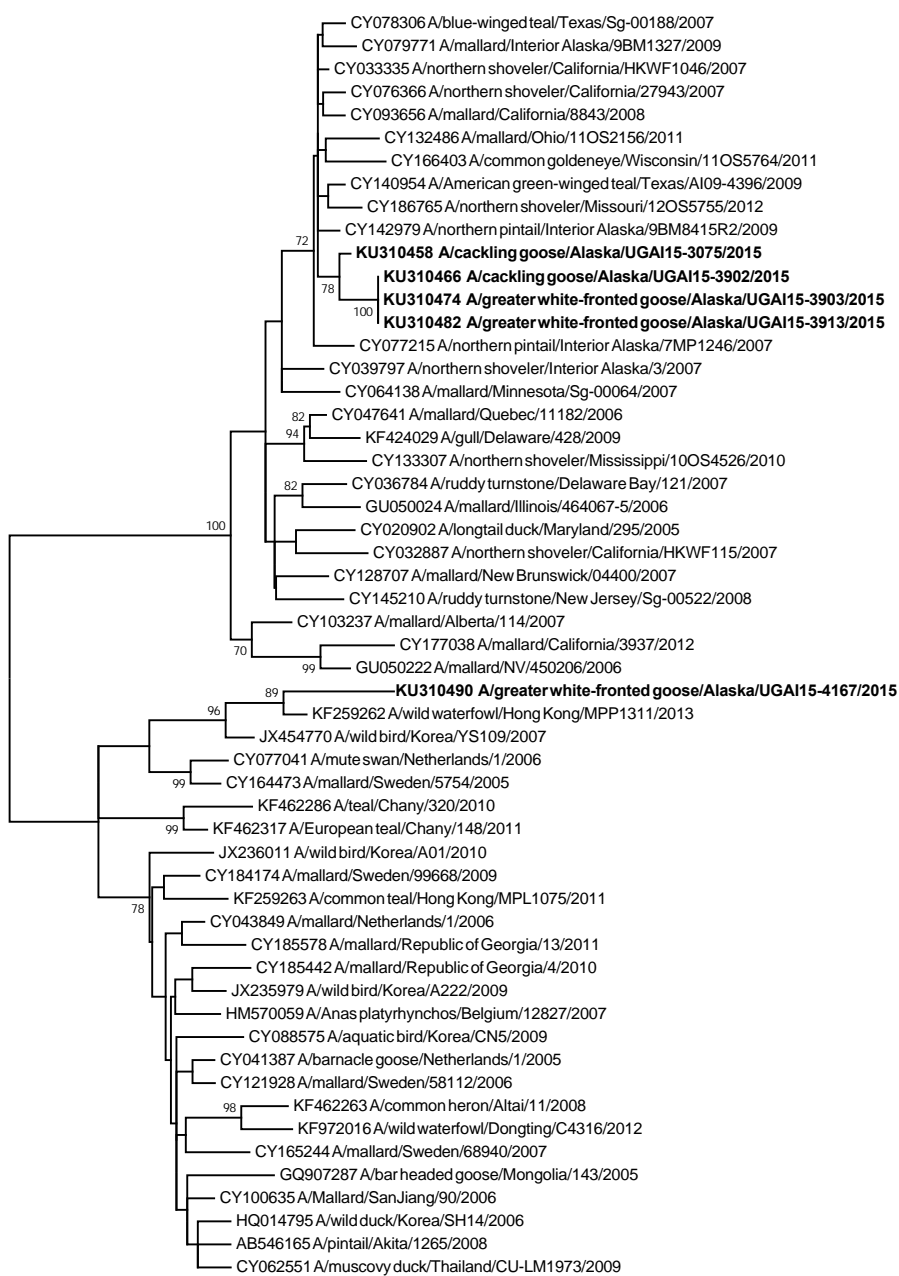
0.02



0.02



0.02



0.01

CY079512 A/northern shoveler/Illinois/08OS3331/2008
 CY166334 A/mallard/Wisconsin/11OS3079/2011
 CY039870 A/mallard/Interior Alaska/3/2007
KU310459 A/cackling goose/Alaska/UGAI15-3075/2015
 CY186736 A/blue-winged teal/Illinois/12OS2929/2012
 CY146541 A/mallard/New Jersey/AI09-6446/2009
 CY093635 A/mallard/California/8457/2008
 CY140757 A/blue-winged Teal/North Dakota/AI09-2912/2009
 95 CY032692 A/northern shoveler/California/HKWF1370/2007
 CY133105 A/blue-winged teal/Wisconsin/10OS2862/2010
 100 CY076465 A/cinnamon teal/California/44287-659/2007
 KC895705 A/common murre/Newfoundland/AB380/2011
 CY047023 A/ruddy turnstone/Delaware/291/2006
 99 CY021689 A/mallard/Missouri/MO32/2005
 CY129241 A/American black duck/New Brunswick/04395/2007
KU310491 A/greater white-fronted goose/Alaska/UGAI15-4167/2015 variant #1
 GQ219715 A/Baikal teal/Hongze/14/2005
 KP284881 A/migratory duck/Jiangxi/30246/2013
 96 CY121987 A/northern shoveler/Georgia/1/2010
 AB593443 A/Muscovy duck/Vietnam/G33/2007
 HE802711 A/common gull/Norway/10 1602/2009
 94 CY041270 A/pink-footed goose/Netherlands/1/2006
 EU518739 A/mallard/Sweden/S90738/2005
 CY041342 A/common eider/Netherlands/1/2006
 CY041382 A/black-headed gull/Netherlands/1/2005
 CY165215 A/mallard/Sweden/68761/2007
 KP287938 A/migratory duck/Jiangxi/593/2005
 GQ414967 A/spot-billed duck/Korea/545/2008
 96 KF260026 A/common teal/Hong Kong/MPL1075/2011
 81 JN029569 A/whooper swan/Mongolia/1-21/2007
 95 KC871433 A/ruddy shelduck/Mongolia/967/2009
 JN029577 A/whooper swan/Mongolia/1-23/2007
 CY185421 A/mallard/Republic of Georgia/1/2010
 CY164476 A/mallard/Sweden/5754/2005
 80 CY043860 A/Eurasian wigeon/Netherlands/3/2005
 83 CY080584 A/shoveler/Koymor/1 18/2009
 93 JN029682 A/white-fronted goose/Mongolia/1-125/2008
 90 CY183722 A/mallard/Sweden/51548/2006
 97 JF682617 A/mallard/Czech Republic/14516/2007
 GQ414961 A/spot-billed duck/Korea/625/2008
 98 KJ764768 A/wild duck/Korea/PSC30-20/2010
 72 CY077306 A/northern shoveler/Interior Alaska/7MP1080/2007
 76 CY142662 A/northern pintail/Interior Alaska/9BM7044R0/2009
 92 JX080997 A/American green-winged teal/Alaska/44493-555/2009
 CY125297 A/American wigeon/New Brunswick/04494/2007
 JF323806 A/Stellers eider/Alaska/44422-253/2008
 99 **KU310492 A/greater white-fronted goose/Alaska/UGAI15-4167/2015 variant #2**
 74 CY097538 A/American black duck/Illinois/4119/2009
 CY166732 A/mallard/Wisconsin/11OS4383/2011
 CY078439 A/green-winged teal/Interior Alaska/6MP0736/2006
 HM193734 A/mallard/Alaska/44430-148/2008
 CY135775 A/northern shoveler/Interior Alaska/10BM05491R0/2010
 CY134177 A/mallard/California/2571P/2011
 75 **KU310483 A/greater white-fronted goose/Alaska/UGAI15-3913/2015**
KU310467 A/cackling goose/Alaska/UGAI15-3902/2015
 99 **KU310475 A/greater white-fronted goose/Alaska/UGAI15-3903/2015**

0.5