

Supplemental table 1

Table A: All mouse weight during 7-day experiment in grams (Mean \pm SD)

Treatment	Days							
	0	1	2	3	4	5	6	7
Control	26.95 \pm 2.07	25.27 \pm 1.82	25.20 \pm 1.65	25.59 \pm 1.64	24.88 \pm 1.49	25.03 \pm 1.61	25.37 \pm 1.52	25.79 \pm 1.83
SWCNT	25.44 \pm 1.85	24.05 \pm 2.23	24.72 \pm 1.88	24.31 \pm 2.21	24.32 \pm 1.87	24.46 \pm 1.74	25.16 \pm 1.75	25.02 \pm 1.69
IAV	25.98 \pm 1.93	24.88 \pm 1.69	24.70 \pm 1.89	24.90 \pm 1.83	24.12 \pm 1.56 *	24.20 \pm 1.30 *	23.33 \pm 1.87 *, #, a	23.06 \pm 1.67 *, #, a, b, c, d
SWCNT+IAV	26.58 \pm 1.30	25.23 \pm 1.36	25.26 \pm 1.33	25.70 \pm 1.35	25.70 \pm 1.48	25.63 \pm 1.46	25.31 \pm 1.86 \$	24.44 \pm 2.07

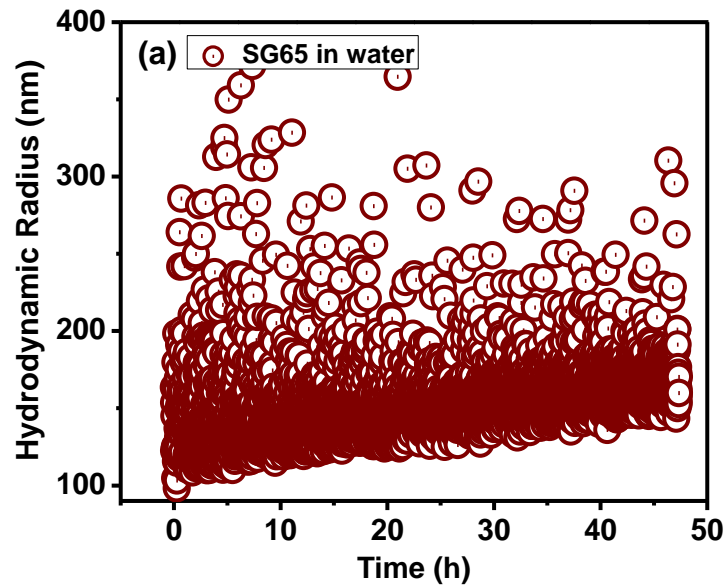
Table B: All mouse weight loss during 7-day experiment as % change from day 0 (Mean \pm SD)

Treatment	Days						
	1	2	3	4	5	6	7
Control	6.18 \pm 1.75	6.38 \pm 2.46	4.94 \pm 2.13	7.53 \pm 2.82	7.00 \pm 2.58	5.71 \pm 2.93	4.23 \pm 2.04
SWCNT	5.56 \pm 3.46	2.83 \pm 3.52	4.52 \pm 3.32	4.39 \pm 2.80*	3.12 \pm 1.94 *	1.06 \pm 2.57 *, b	1.61 \pm 2.73 b
IAV	4.15 \pm 3.53	4.91 \pm 2.59	4.11 \pm 3.26	6.31 \pm 3.45	5.90 \pm 3.90 #	9.46 \pm 3.73 *, #, b, c, d, e, f	10.41 \pm 4.14 *, #, b, c, d, e, f
SWCNT+IAV	5.04 \pm 3.03	4.94 \pm 2.72	3.31 \pm 2.06	3.35 \pm 1.90*, \$	3.60 \pm 1.82 *	4.87 \pm 3.20 #, \$	8.17 \pm 4.27 *, #, b, c, d, e, f

“*” indicates statistically significant change from control group within each time point; “#” indicates statistically significant change from SWCNT group within each time point; “\$” indicates statistically significant change from IAV group within each time point. “a” indicates statistically significant change from day 0 group within each treatment group; “b” indicates statistically significant change from day 1 group within each treatment group; “c” indicates statistically significant change from day 2 group within each treatment group; “d” indicates statistically significant change from day 3 group within each treatment group; “e” indicates statistically significant change from day 4 group within each treatment group; “f” indicates statistically significant change from day 5 group within each treatment group. ($P < 0.05$)

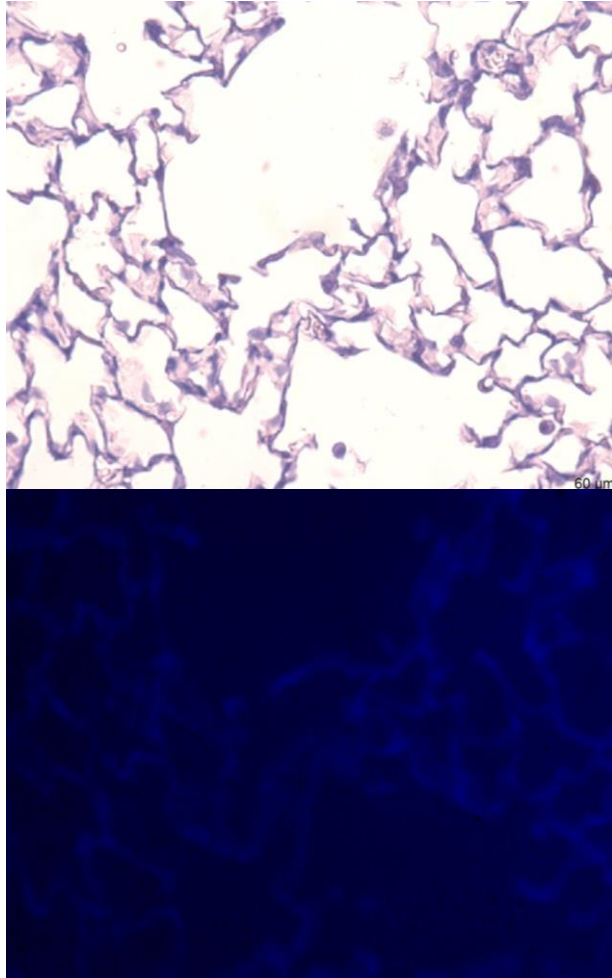
Supplement table 2

Gene name	Forward primer (5'-3')	Reverse primer (5'-3')
<i>gapdh</i>	AGG TCA TCC CAG AGC TGA ACG	CAC CCT GTT GCT GTA GCC GTA T
<i>tlr3</i>	ACC TTT GTC TTC TGC ACG AAC CT	AGT TCT TCA CTT CGC AAC GCA
<i>ifnβ1</i>	GGCTTCCATCATGAACAACAGGT	AGGTGAGGTTGATCTTTCCATTCAG
<i>ifit2</i>	CGGAAAGCAGAGGAAATCAA	TGAAAGTTGCCATACCGAAG
<i>ifit3</i>	GACGATTAACGATGGAGTTC	GGGCTCTCCTTACTGATGAC
<i>rantes</i>	GCTGCTTTGCCTACCTCTCC	TCGAGTGACAAACACGACTGC
<i>il8</i>	CTTGAAGGTGTTGCCCTCAG	TGGGGACACCTTTTAGCATC

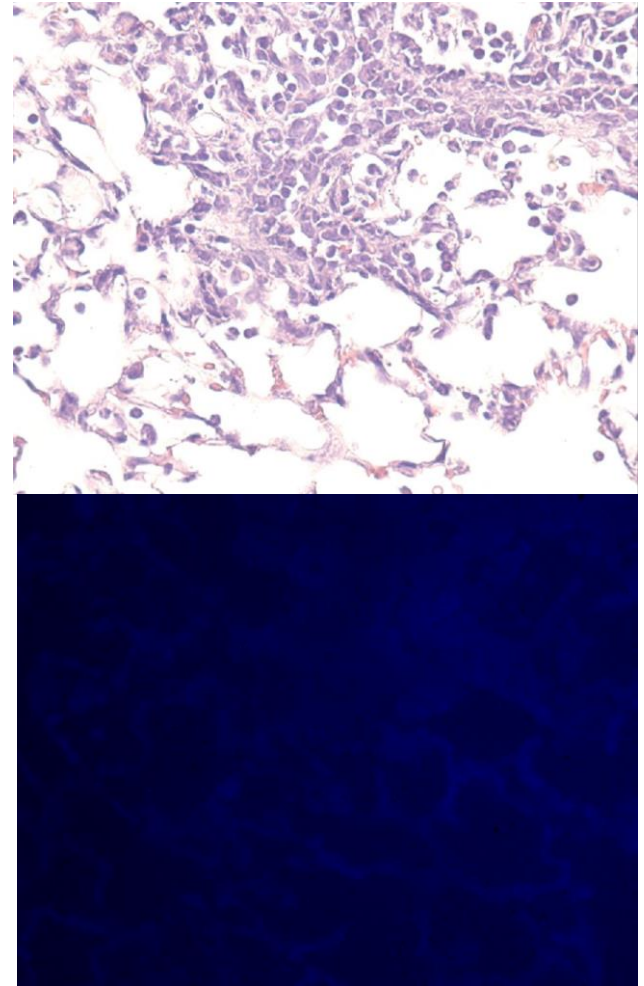


Supplemental Figure 1. Characterization of SWCNT. Hydrodynamic radii plot of SG65i dialyzed SWCNT used in all experiments. All experiments were performed at 37 °C.

A



B



Supplemental Figure 2. NIRF of lung tissues among animals in control and IAV only group. Mouse lung H&E stained tissue sections from a (A) control and (B) IAV exposed animal and corresponding NIRF image, 400X.