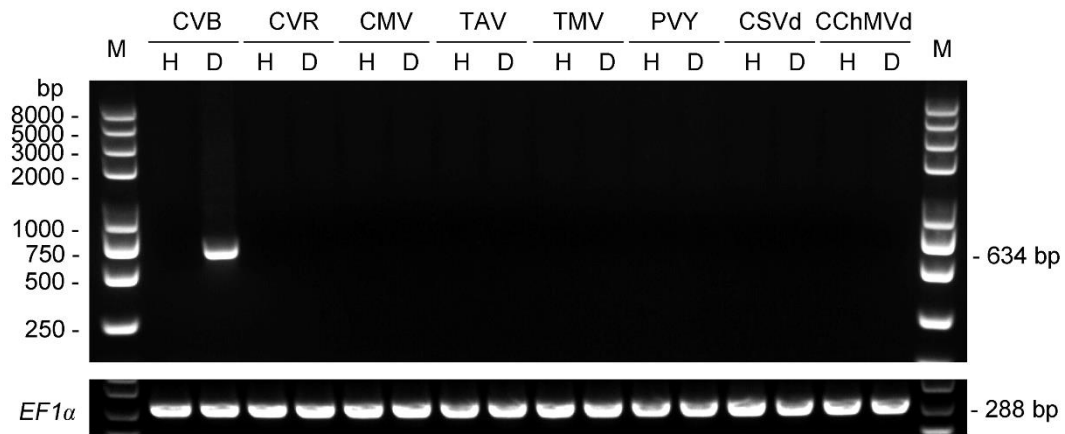


Figure S1



**Figure S1.** Reverse transcription PCR (RT-PCR) analysis of symptomatic *Chrysanthemum morifolium* samples. RT-PCR detection of the chrysanthemum virus B (CVB), chrysanthemum virus R (CVR), cucumber mosaic virus (CMV), tomato aspermy virus (TAV), tobacco mosaic virus (TMV), potato virus Y (PVY), chrysanthemum stunt viroid (CSVd), and chrysanthemum chlorotic mottle viroid (CChMVd). *C. morifolium EF1α* (*CmEF1α*) was used as an internal control. M: DNA marker; H: healthy leaf samples; D: diseased leaf samples.