

Supplementary materials of the full images of gels and blots

Host sex disparity and viral genotype dependence of the glycosylation level of small hepatitis B surface protein in patients with HBeAg-positive chronic hepatitis B

Guomin Ou, Chengyu Zhao, Juan Deng, Hui Zhuang*, Kuanhui Xiang*, Tong Li*

Department of Microbiology and Infectious Disease Center, School of Basic Medical Sciences, Peking University Health Science Center, Beijing 100191, China

*Correspondence:

Hui Zhuang

zhuangbmu@126.com

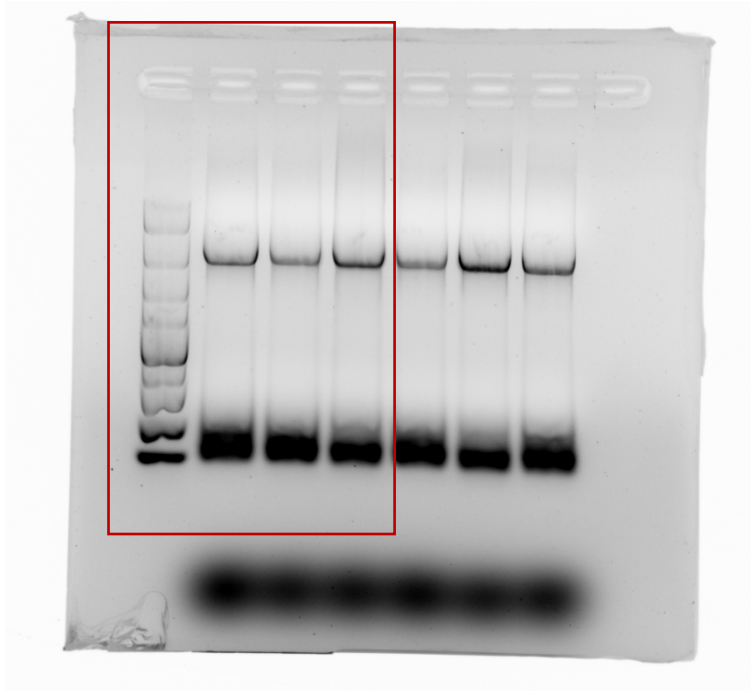
Kuanhui Xiang

kxiang@bjmu.edu.cn

Tong Li

toglii97@bjmu.edu.cn

Figure 1B



Agarose gel electrophoresis image used for the **Figure 1B**. The red rectangular box indicates the part presented in the paper.

Figure 1C left

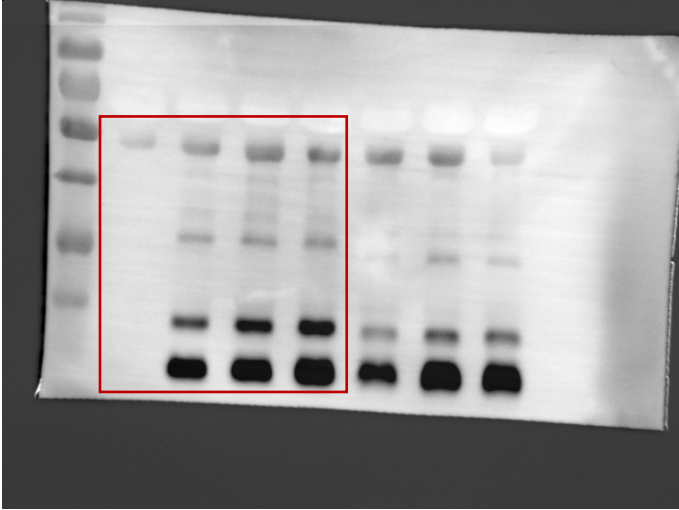


Figure 1C middle

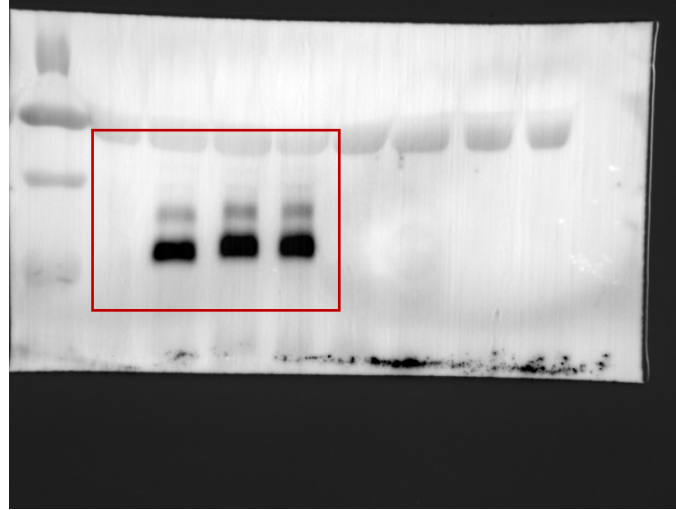
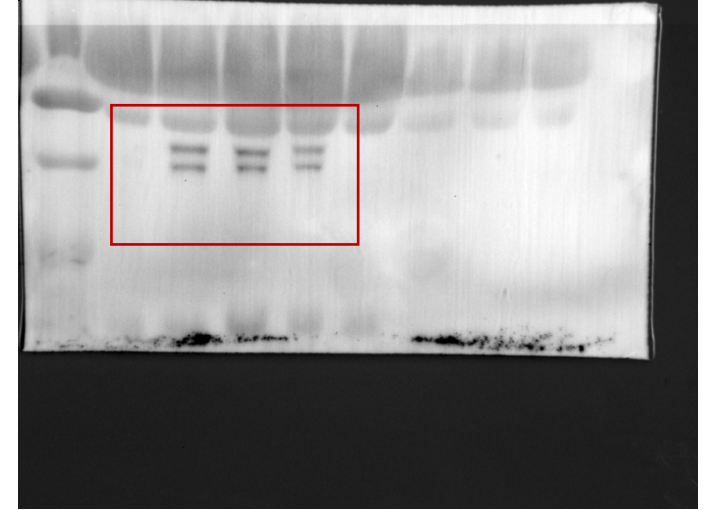


Figure 1C right



Western blot images used for the **Figure 1C**. The red rectangular box indicates the parts presented in the paper.

Figure 1D left

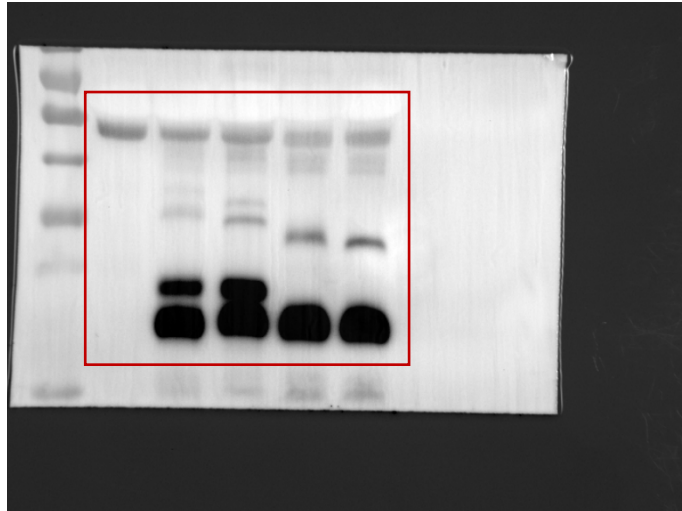


Figure 1D middle

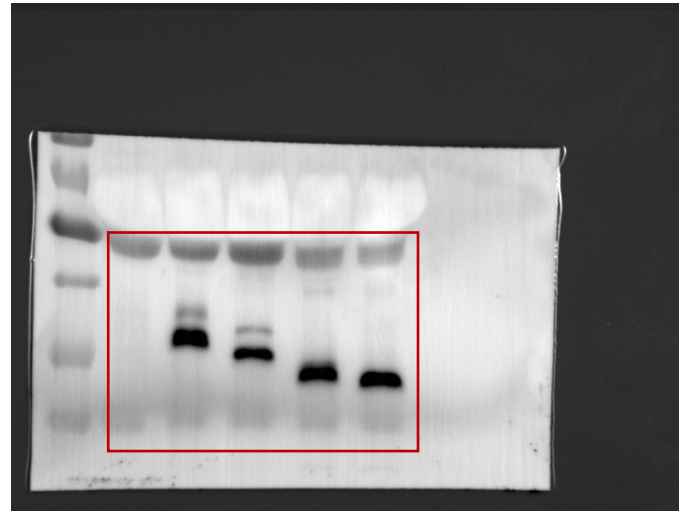
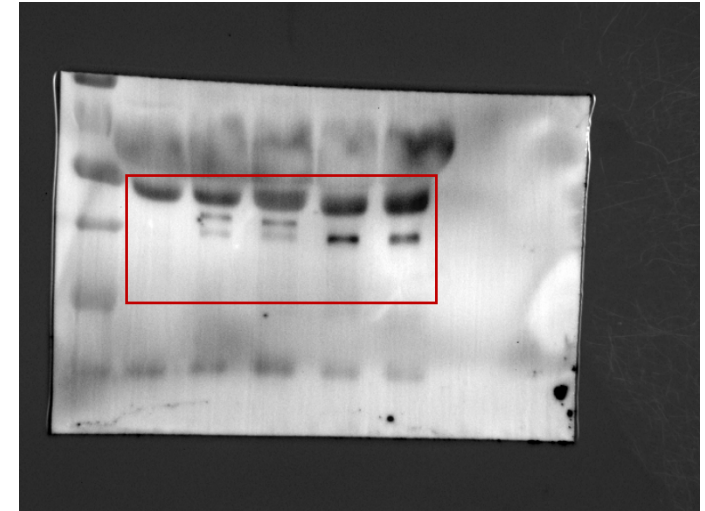
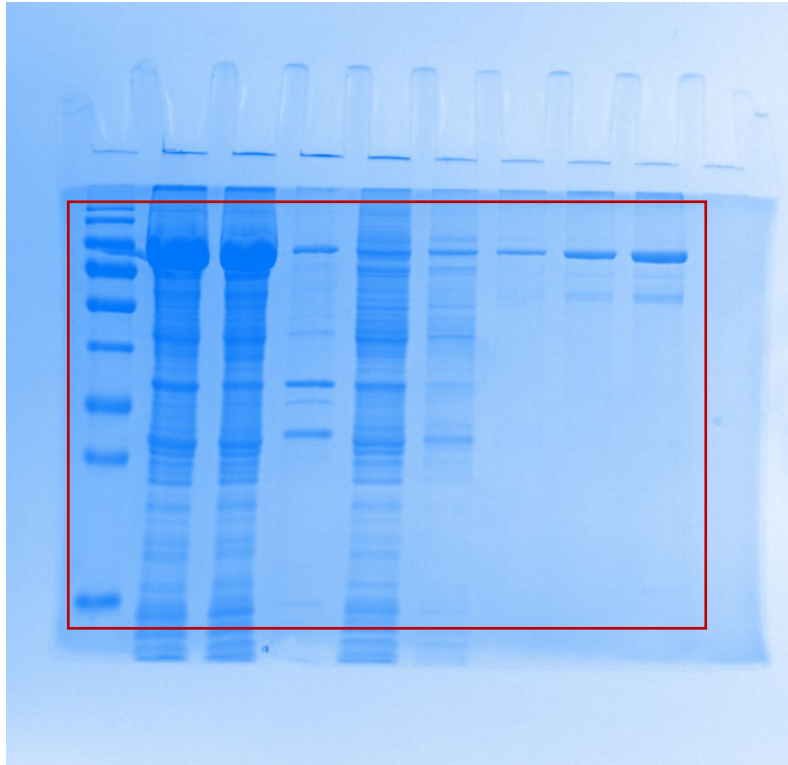


Figure 1D right



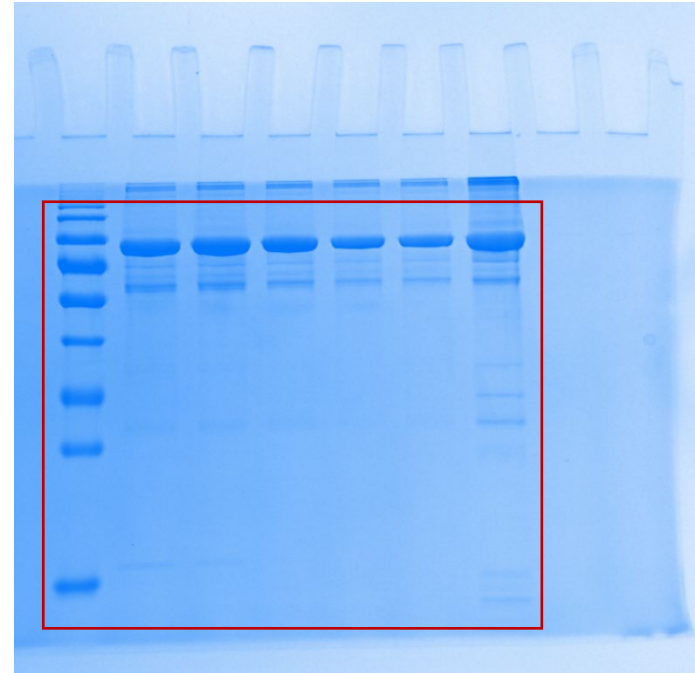
Western blot images used for the **Figure 1D**. The red rectangular box indicates the parts presented in the paper.

Figure 2B left



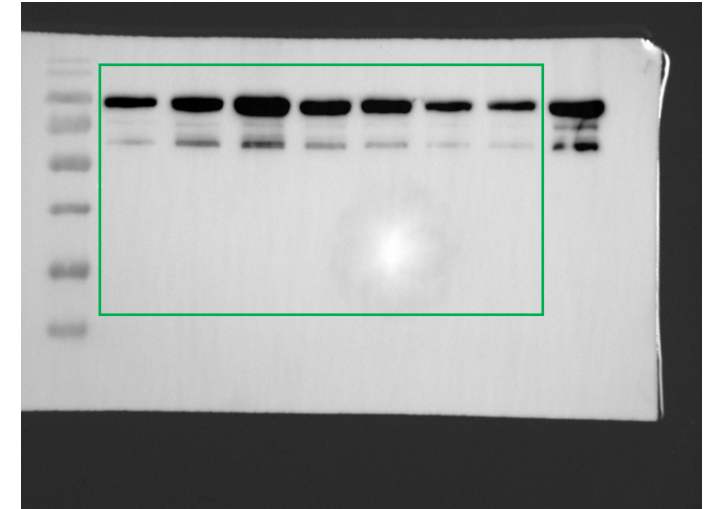
SDS-PAGE

Figure 2B right



SDS-PAGE

Figure 2C

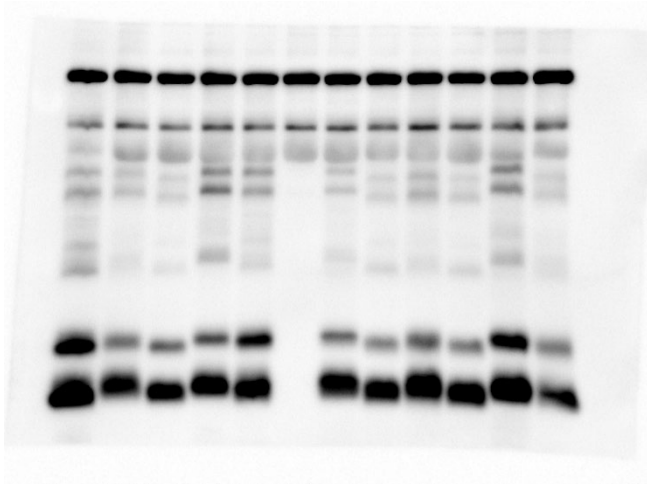


Western blot

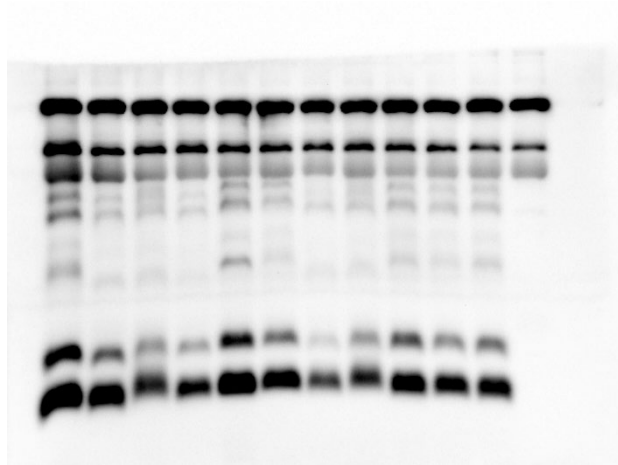
The red and green rectangular boxes indicate the parts presented in the **Figure 2B** and **2C**, respectively.

The pages 7 to 12 contain the Western blot images for the serum samples of patients, negative control (NC) and external control (EC), in which the target SHBs band intensities were measured and statistically analyzed. The data presented in the **Table 2**, **Table 4** and **Table 5** are derived from these images. The image named “Sample 51-60” on page 6 in this file is used as an example and presented in the **Figure 3** of this paper.

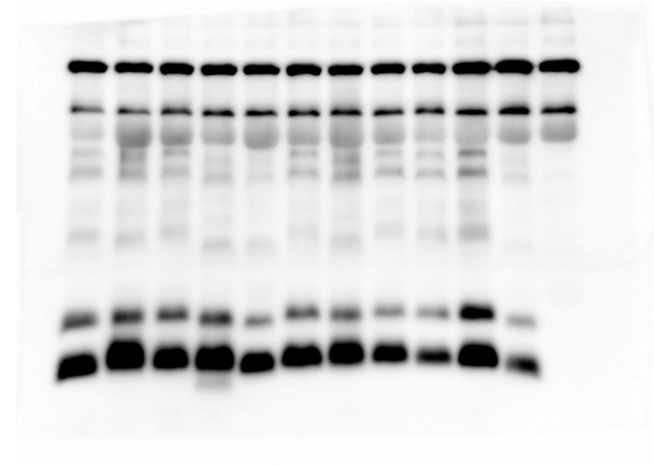
Sample 1-10



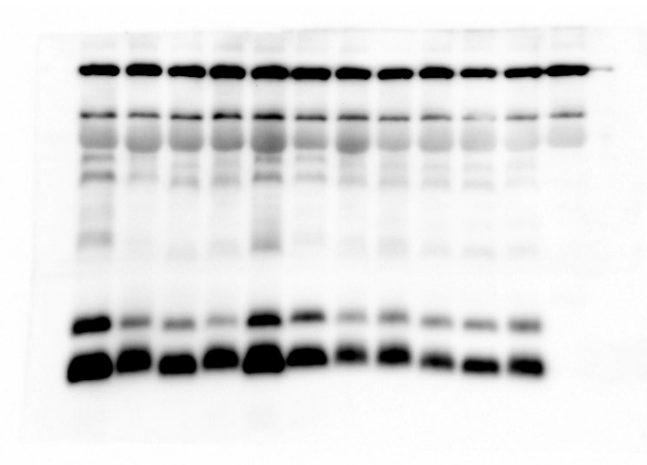
Sample 11-20



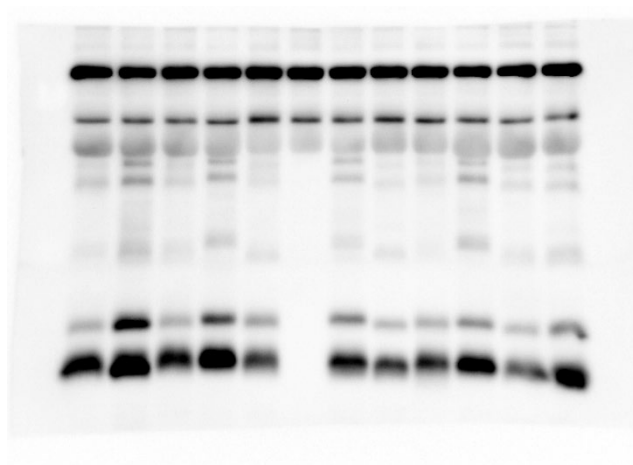
Sample 21-30



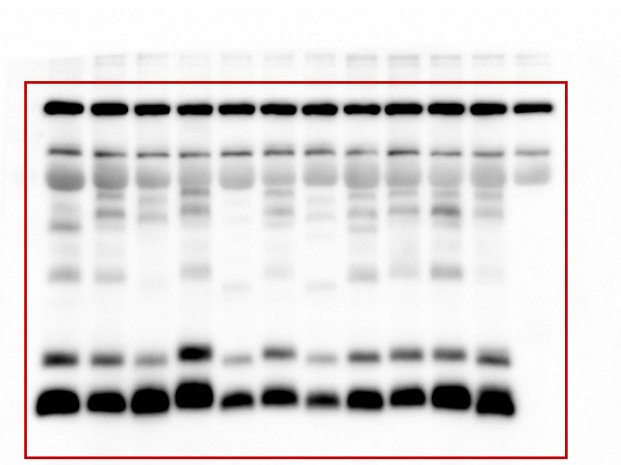
Sample 31-40



Sample 41-50

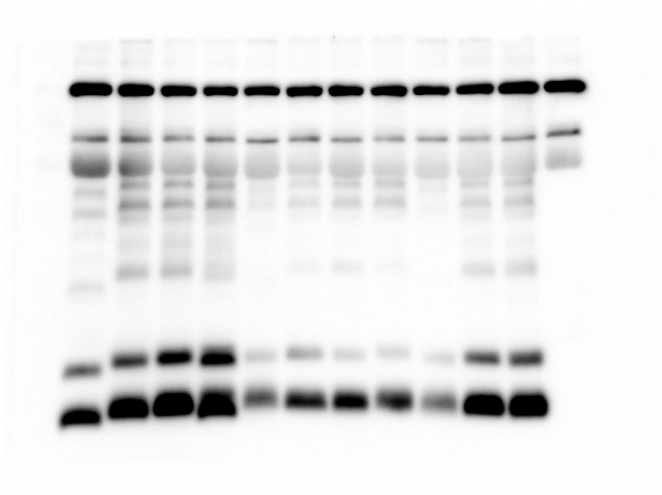


Sample 51-60

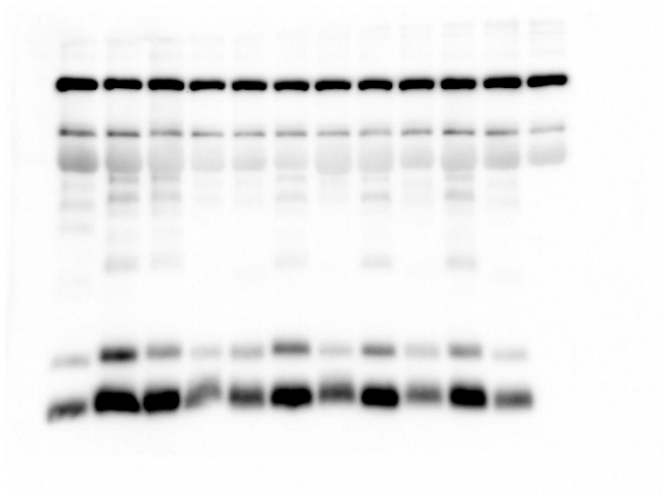


The red rectangular box indicates the parts presented in **Figure 3**.

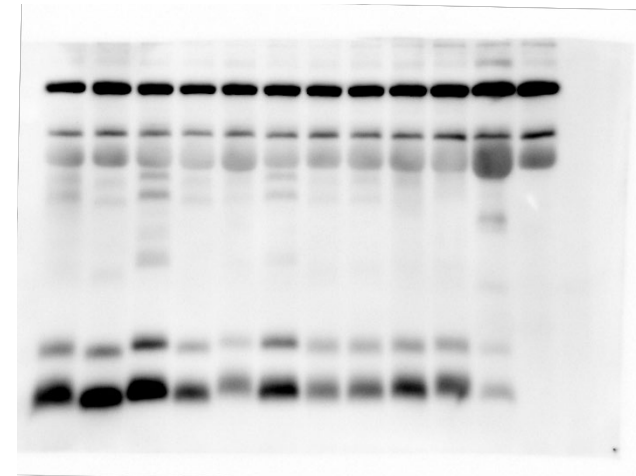
Sample 61-70



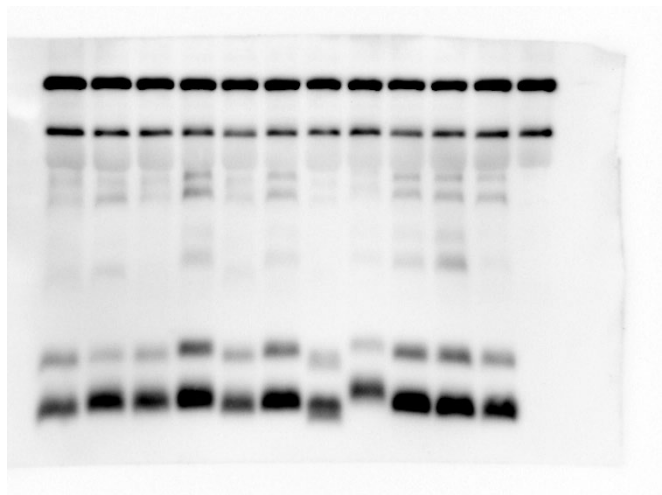
Sample 71-80



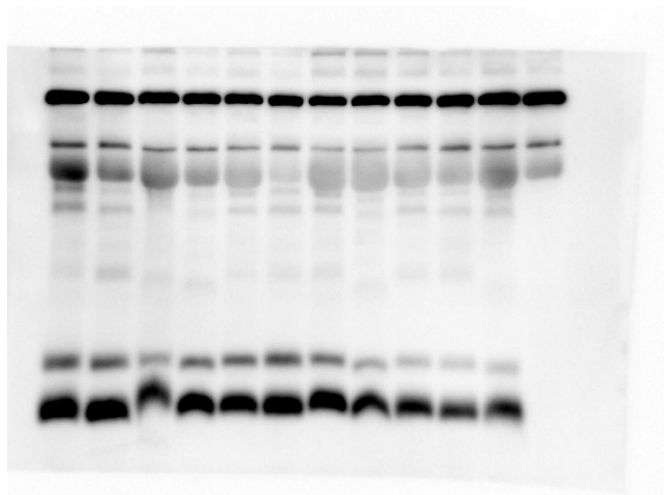
Sample 81-86, 88-91



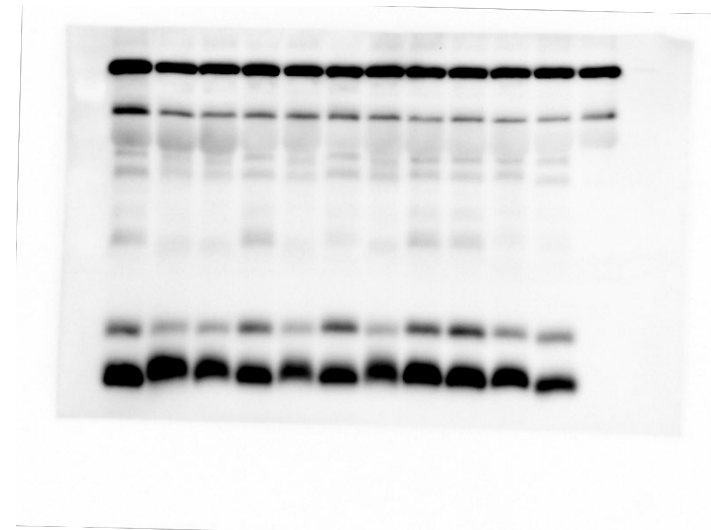
Sample 92-101



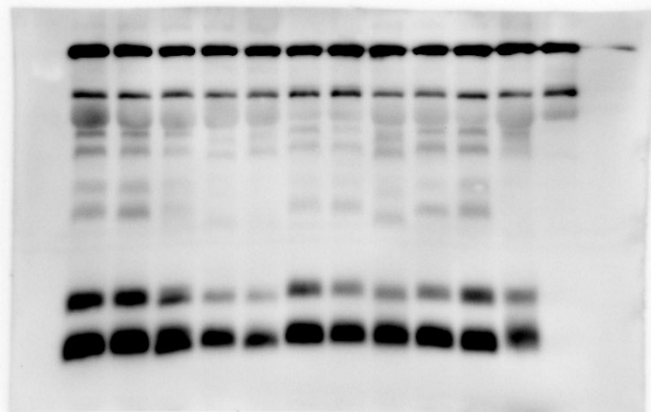
Sample 102-111



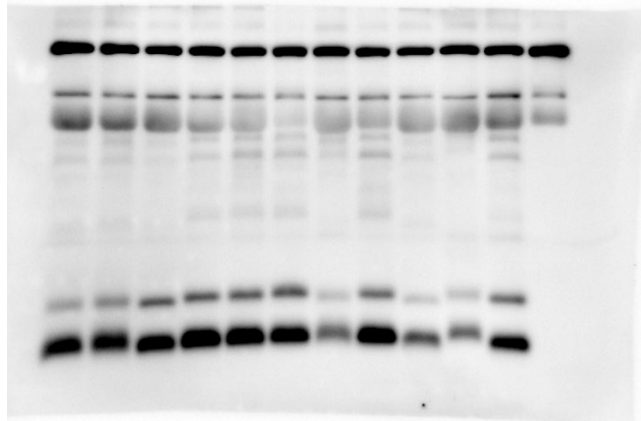
Sample 112-121



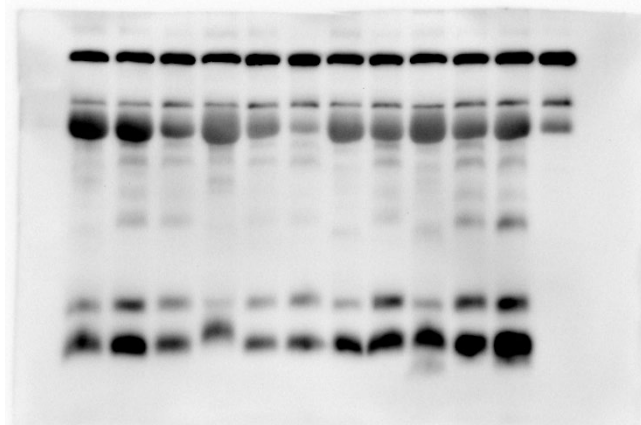
Sample 122-131



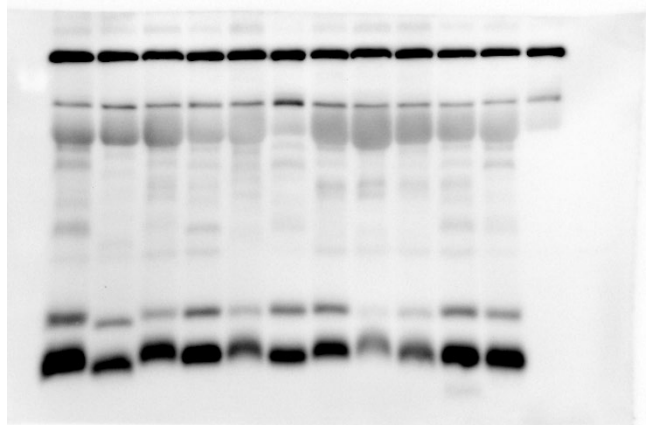
Sample 132-141



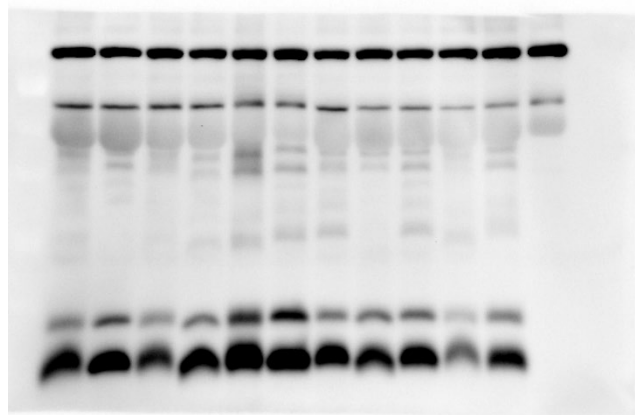
Sample 142-151



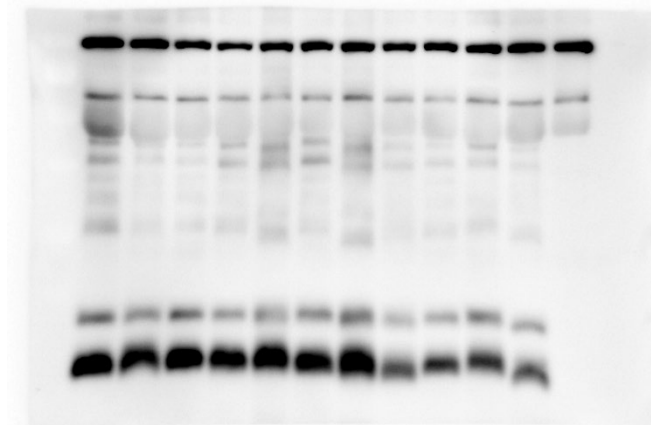
Sample 152-161



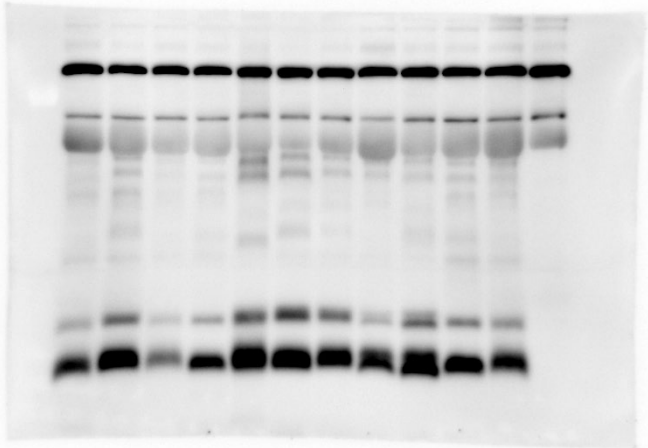
Sample 162-170



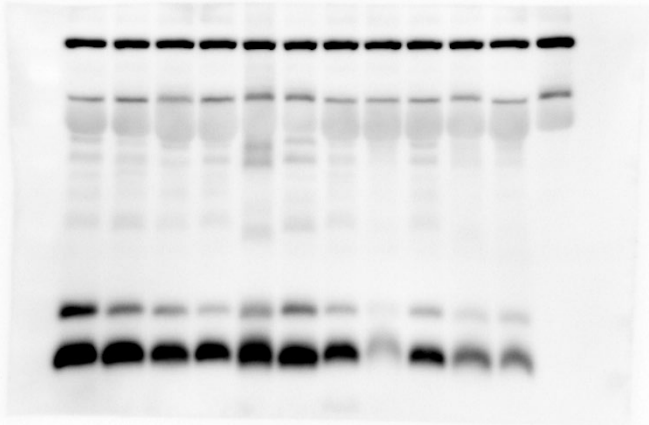
Sample 171-179



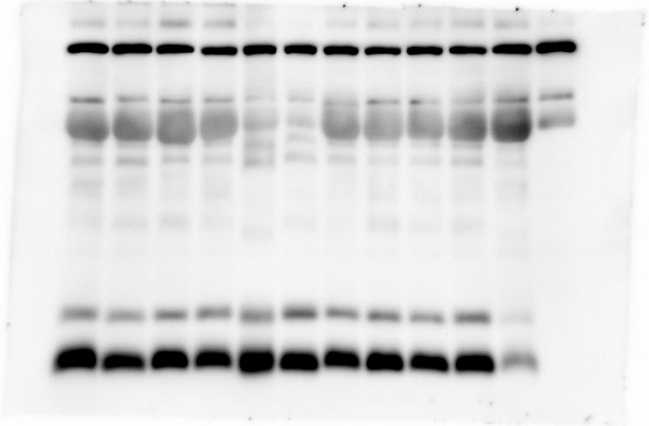
Sample 180-188



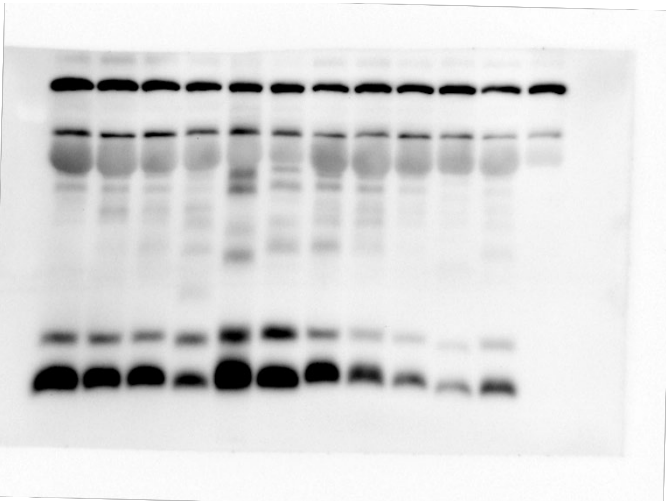
Sample 189-197



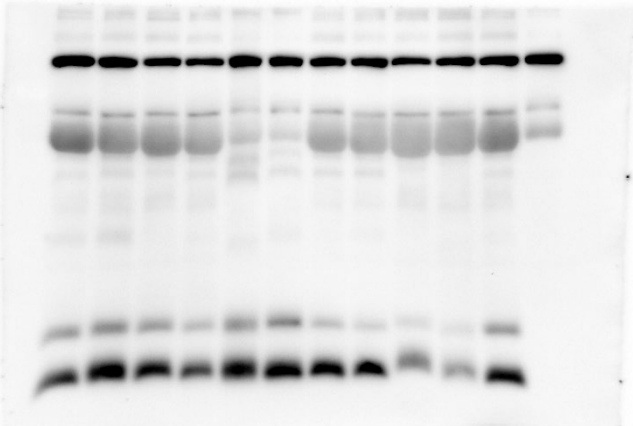
Sample 198-206



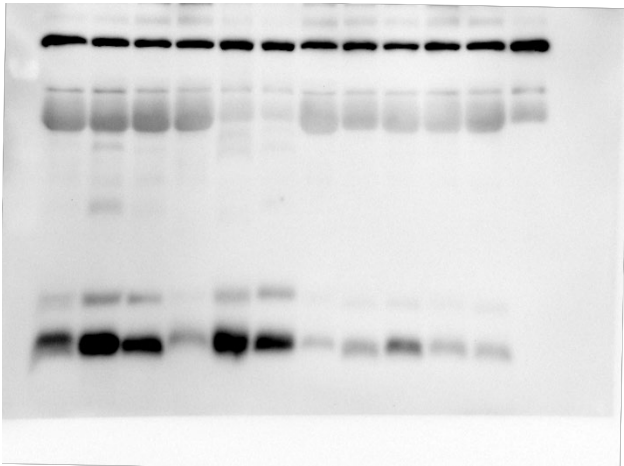
Sample 207-215



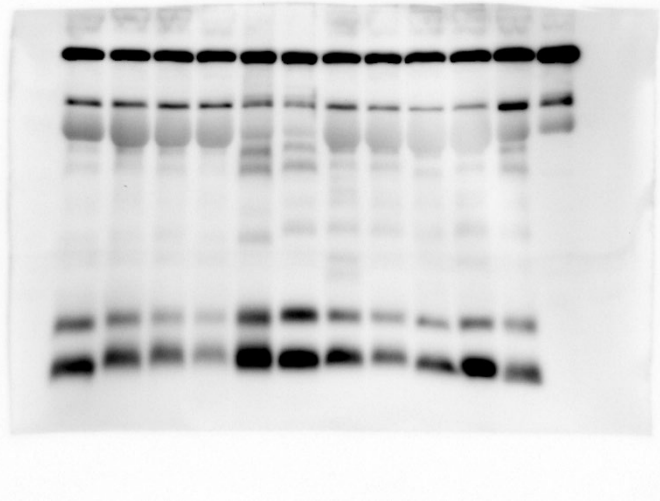
Sample 216-224



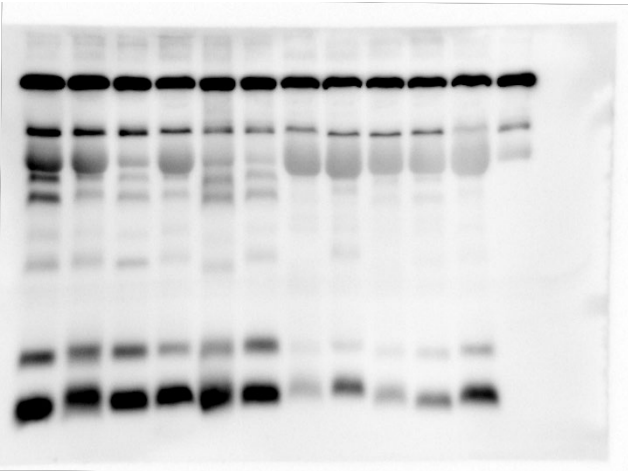
Sample 225-233



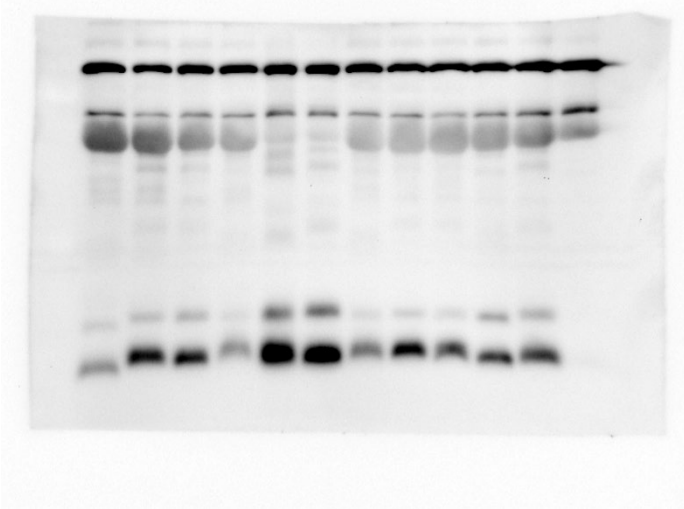
Sample 234-242



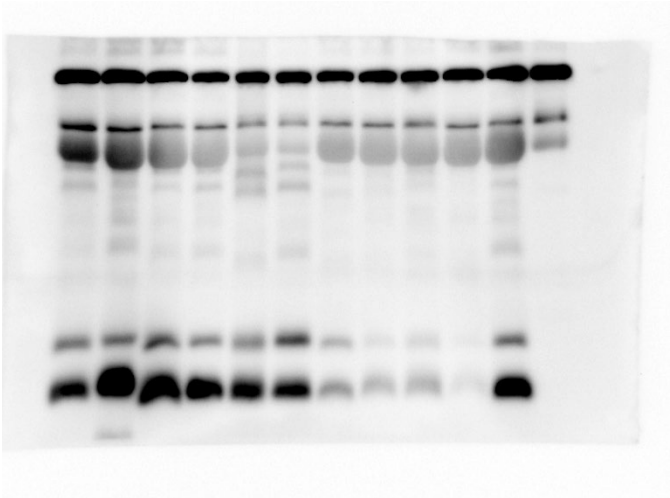
Sample 243-251



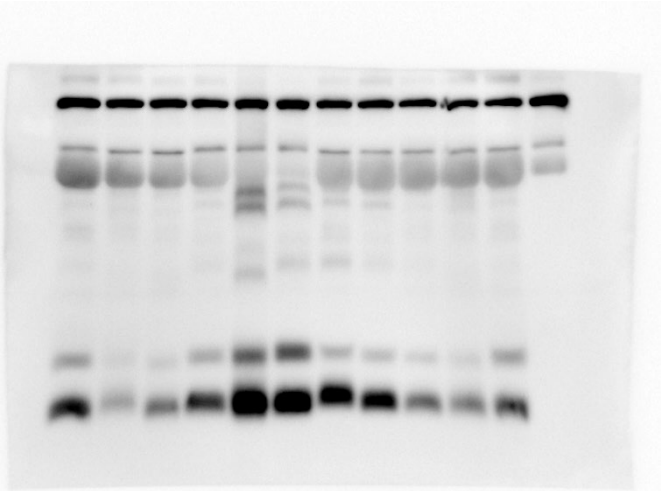
Sample 252-260



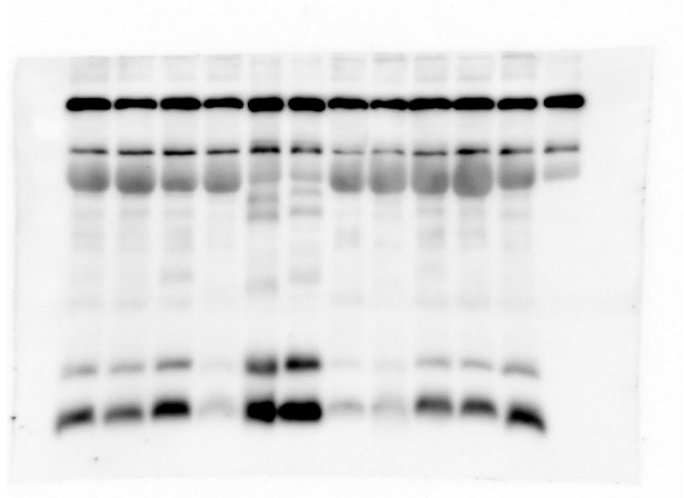
Sample 261-269



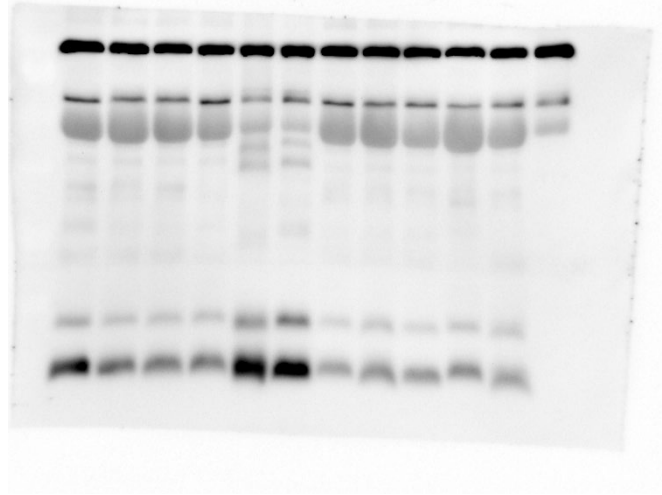
Sample 270-278



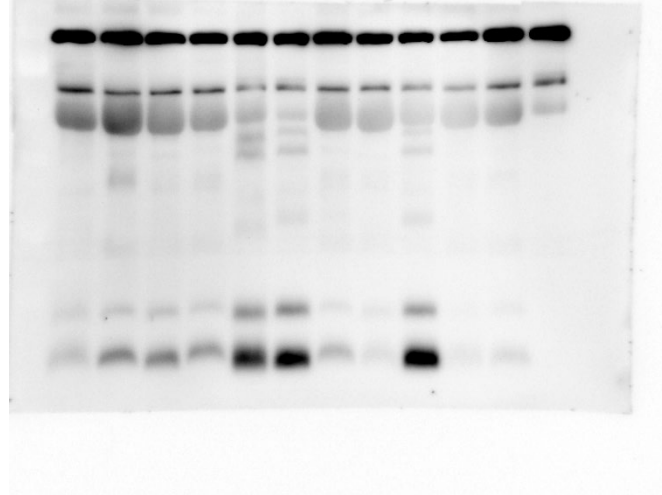
Sample 279-287



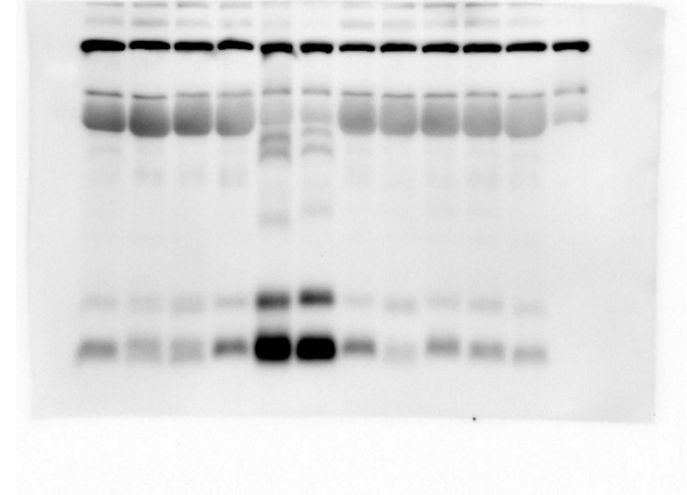
Sample 288-296



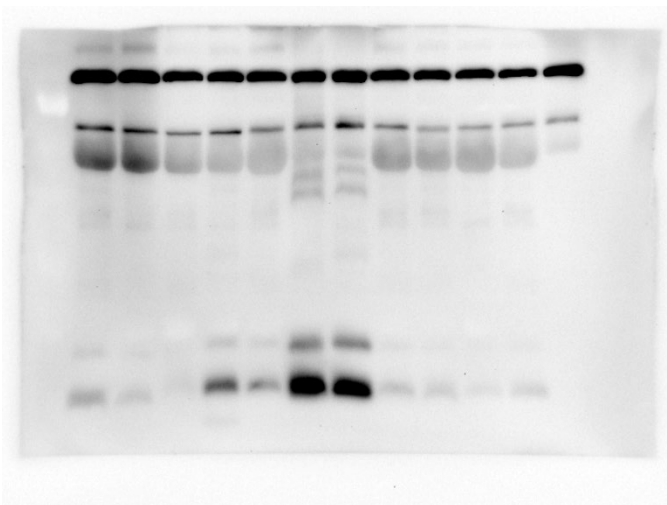
Sample 297-305



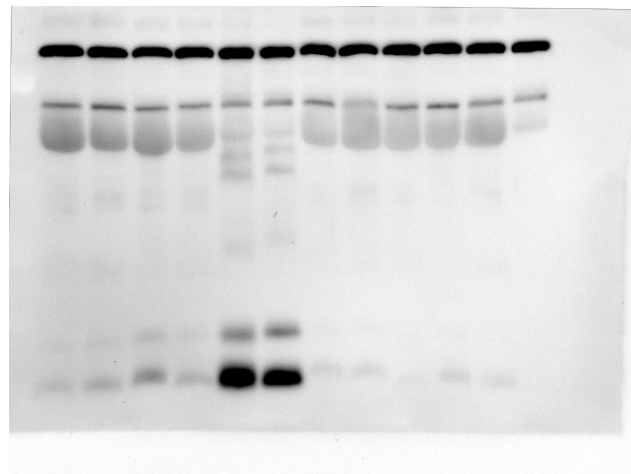
Sample 306-314



Sample 315-323



Sample 324-332



Sample 333-341

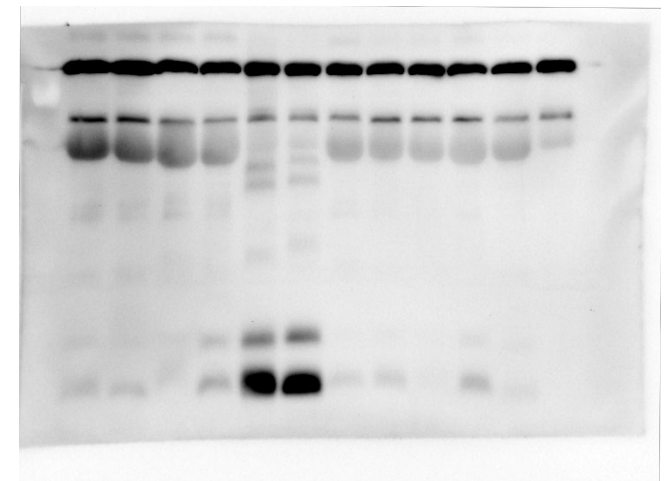


Figure 6C upper

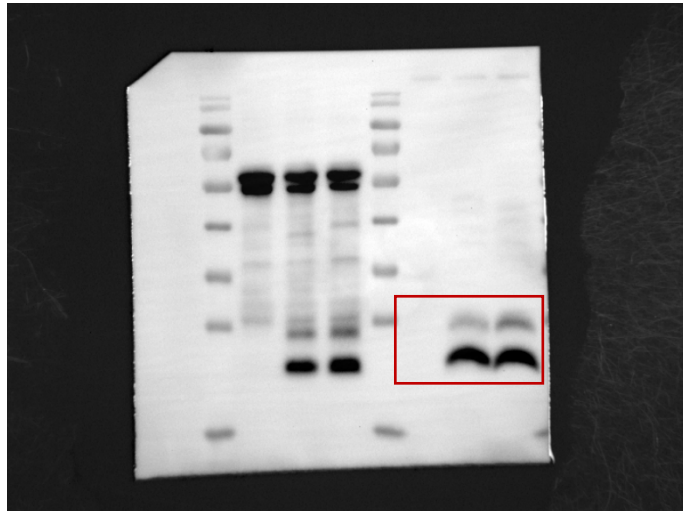


Figure 6C middle

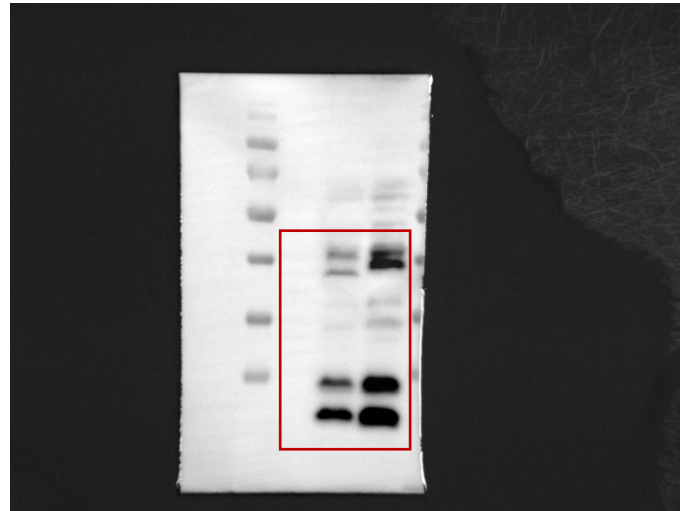
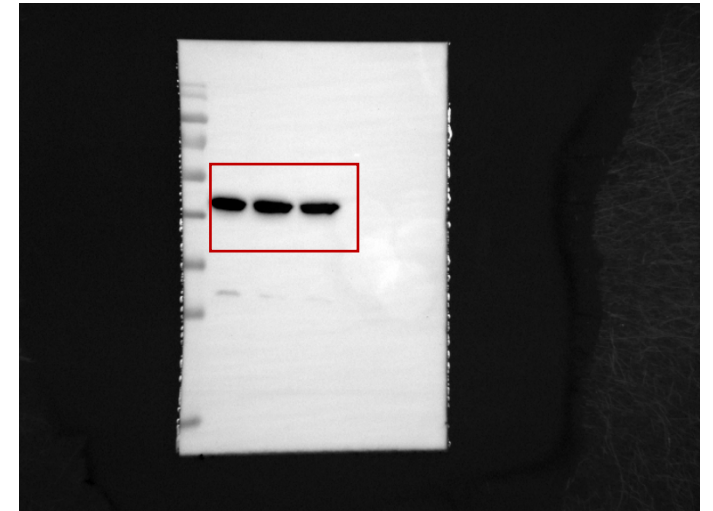


Figure 6C lower



Western blot images used for the **Figure 6C**. The red rectangular box indicates the parts presented in the paper.