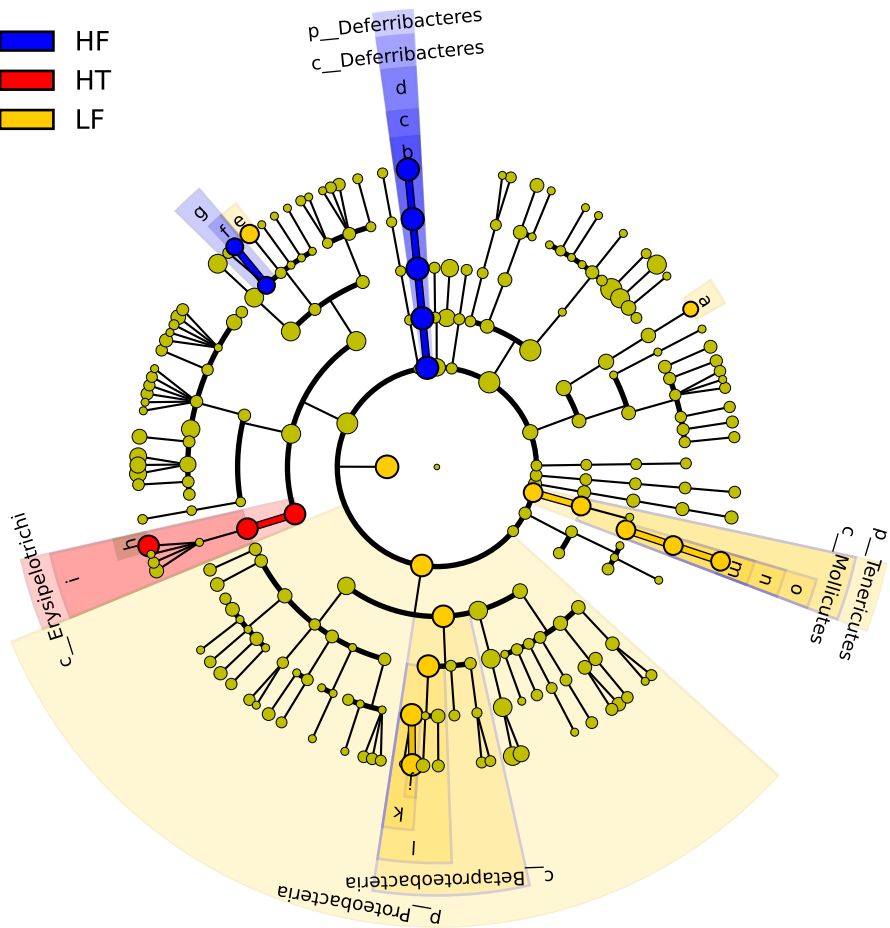


- HF
- HT
- LF



- a: g_Adlercreutzia
- b: g_Mucispirillum
- c: f_Deferribacteraceae
- d: o_Deferribacterales
- e: g_Lactobacillus
- f: g_Lactococcus
- g: f_Streptococcaceae
- h: g_Allobaculum
- i: o_Erysipelotrichales
- j: g_Sutterella
- k: f_Alcaligenaceae
- l: o_Burkholderiales
- m: g_Anaeroplasmataceae
- n: f_Anaeroplasmataceae
- o: o_Anaeroplasmatales