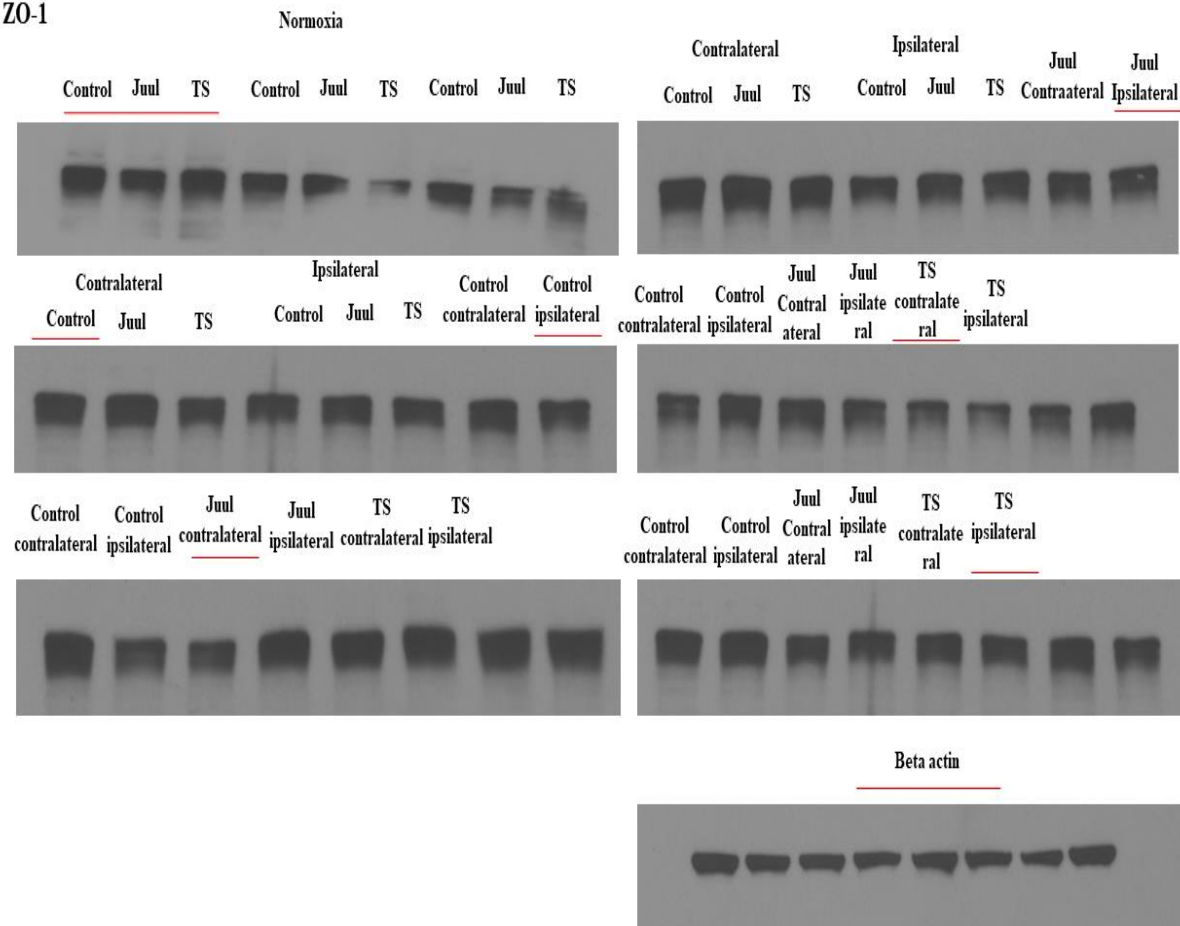


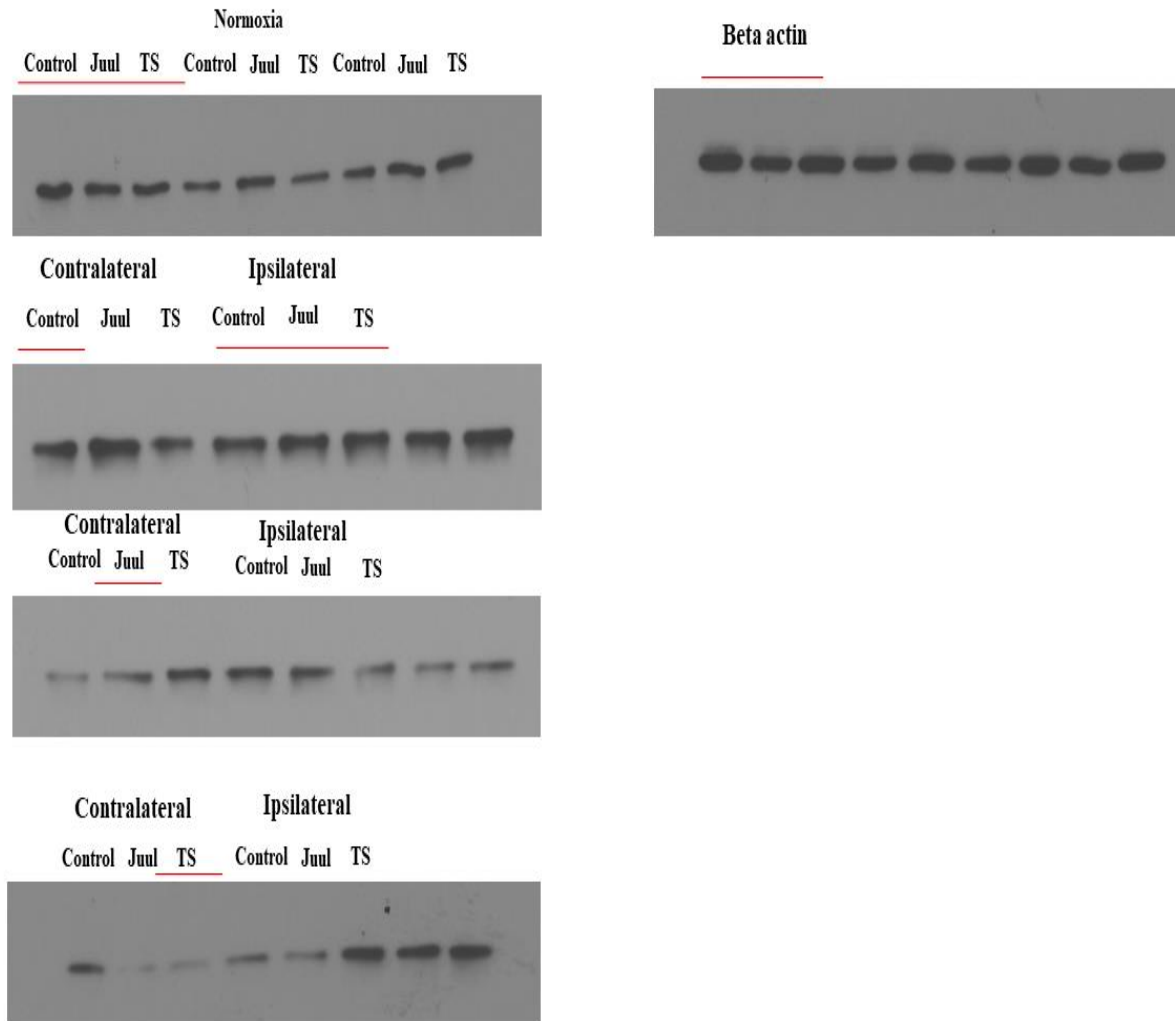
Supplementary Figure S1.

Fig 6A.



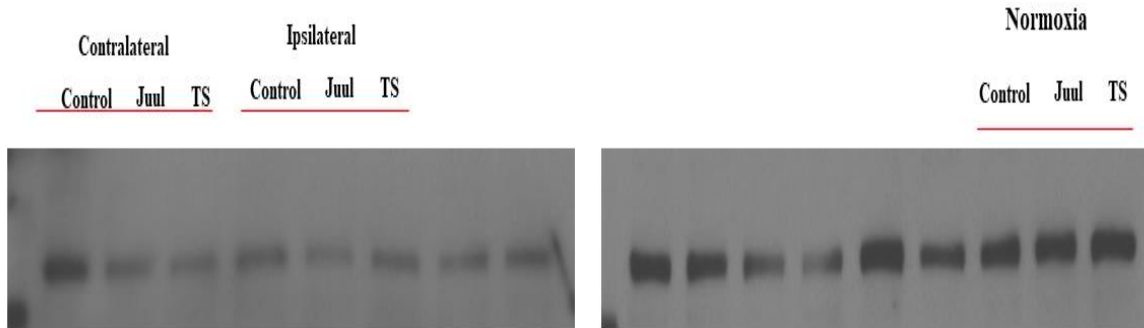
**Fig 6E.**

**Claudin-5**

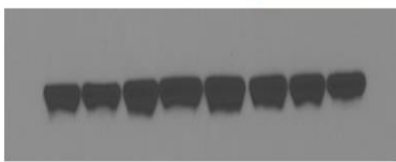


**Fig 6I.**

**Occludin**



Beta  
actin



**Fig 7A.**

**Nrf2**

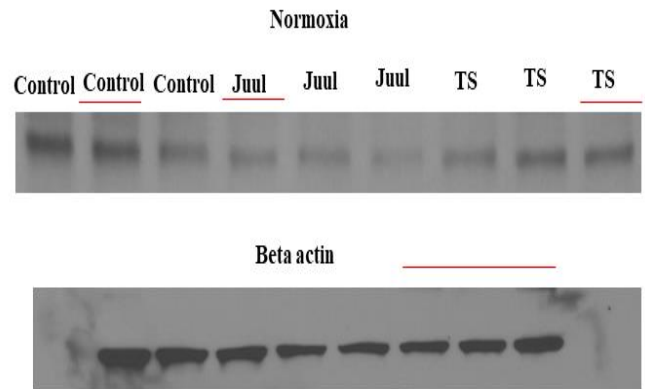
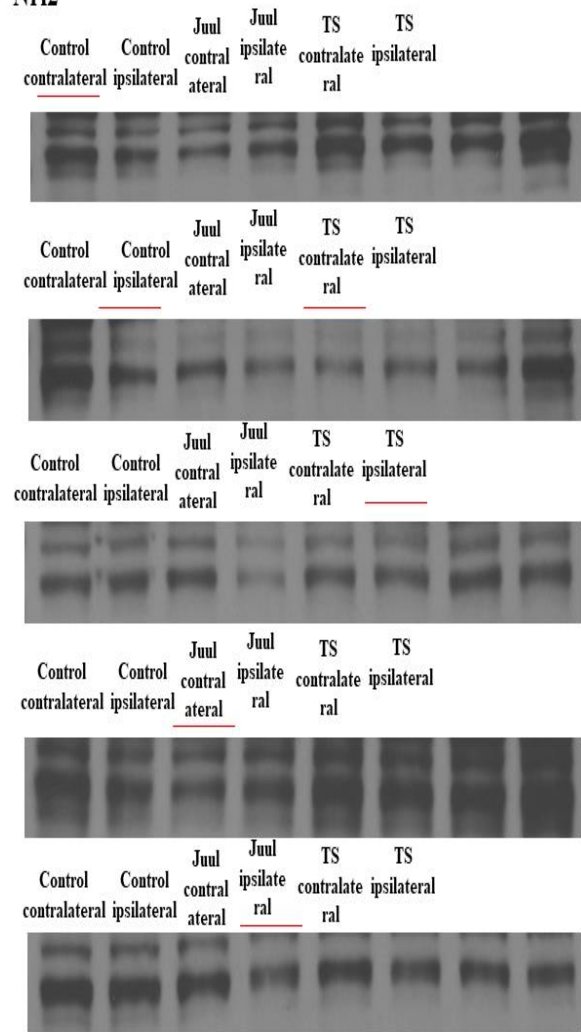
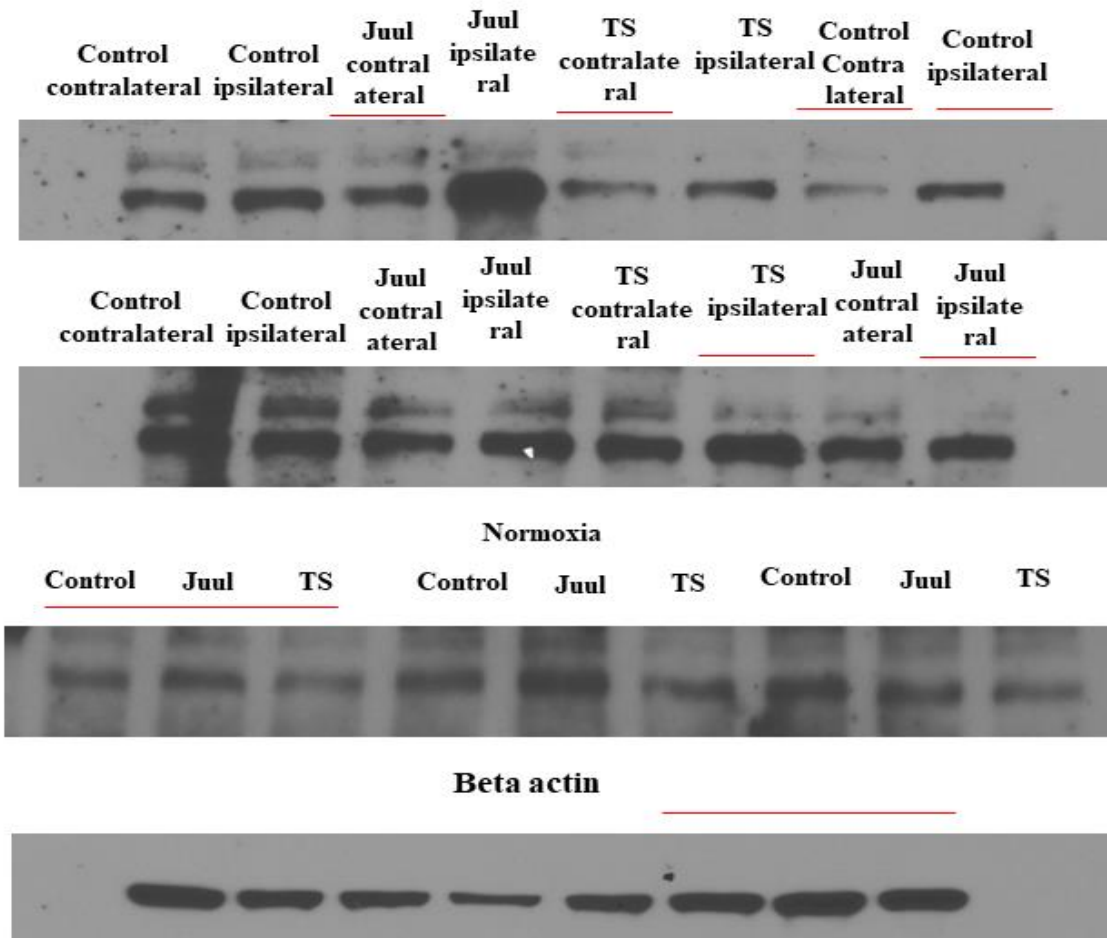


Fig 7E.

**ICAM-1**



**Supplementary Figure S1.** Full-length western blot images developed by X-ray films. The figures depict full length images of the cropped western blot images used in the original manuscript for figure 6A, 6E, 6I, 7A, and 7E representing brain expression of ZO-1, claudin-5, occludin, Nrf2, and ICAM-1, respectively along with beta actin. The portion of the full-length images which were cropped to represent normoxia, contralateral, and ipsilateral brain expression of control, JUUL, and tobacco smoke (TS)-exposed mice after MCAO are marked with a red line.