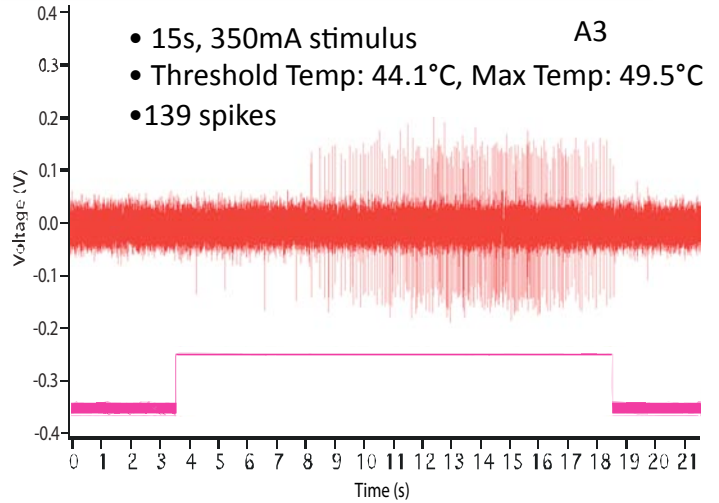
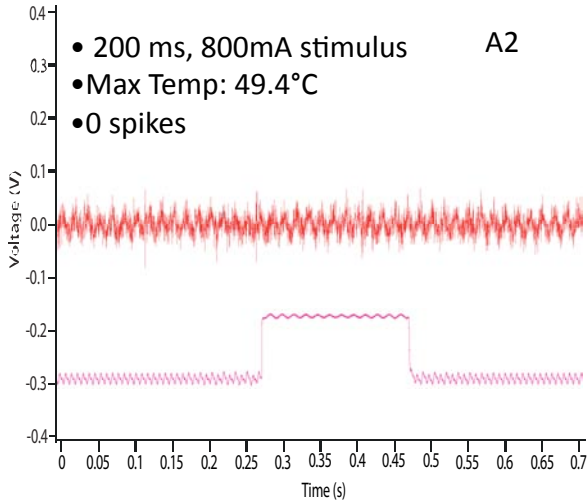
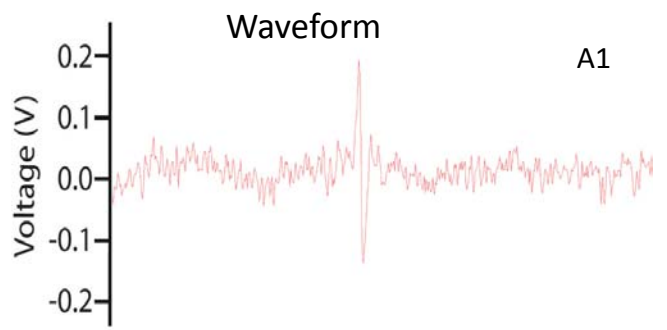


## A. C-fiber Unit (2.21.2008)

- Receptive Field: 5mm caudal, 3mm ventral to eye
- Conduction Velocity: 0.47m/s



## B. A-delta Unit (5.9.2008)

- Receptive Field: 5mm caudal, 3mm ventral to eye
- Conduction Velocity: 2.6m/s

