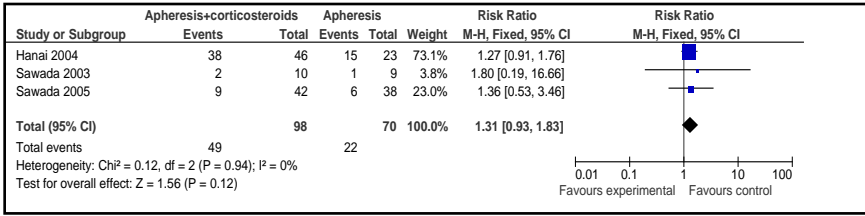
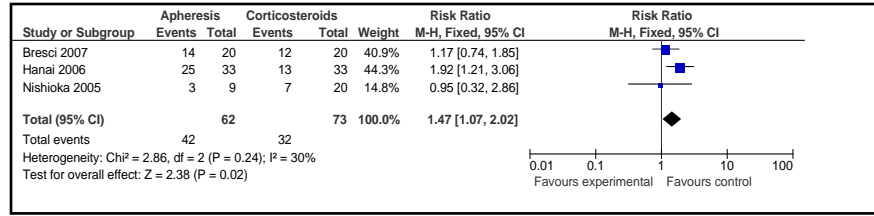


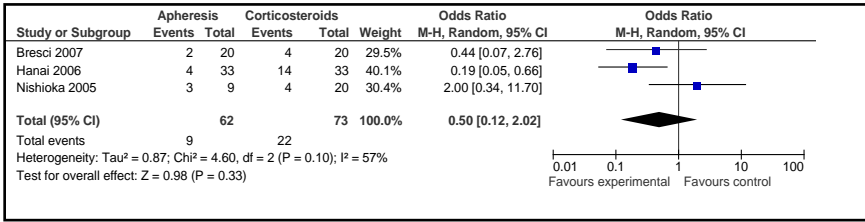
a.



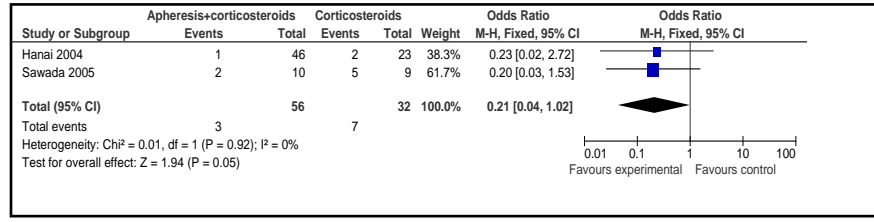
a.



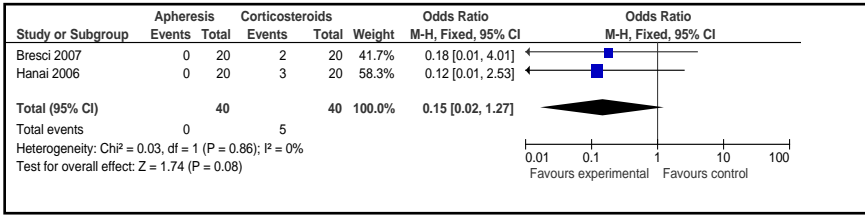
b.



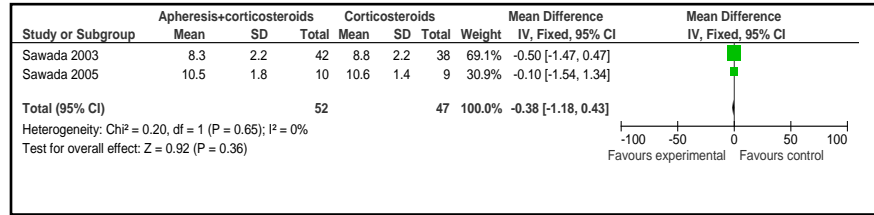
b.



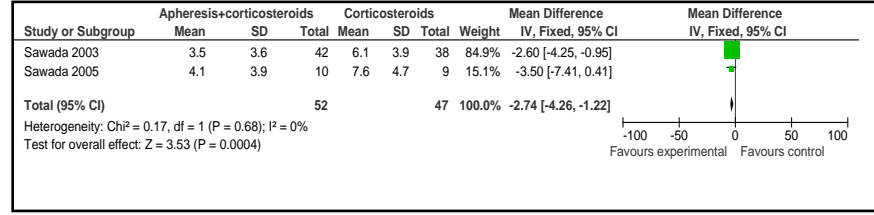
c.



c.



2.



A/ Results for the first question

Metanalysis done for the following outcomes:

- a) Clinical remission;
- b) Percentage of patients with mild adverse effects;
- c) Percentage of patients with moderate to severe adverse effects

B/ Results for the second question

Metanalysis done for the following outcomes:

- a) Clinical remission;
- b) Colectomy Rate;
- c) Endoscopic Index (EI) mean before (1) and after (2) the treatment in both patient groups