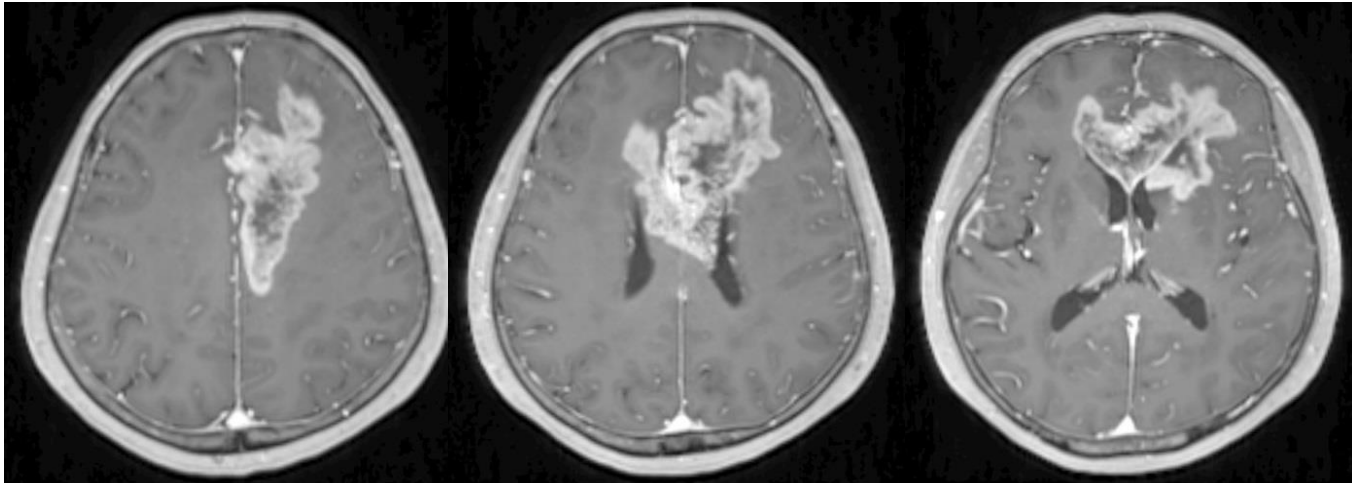
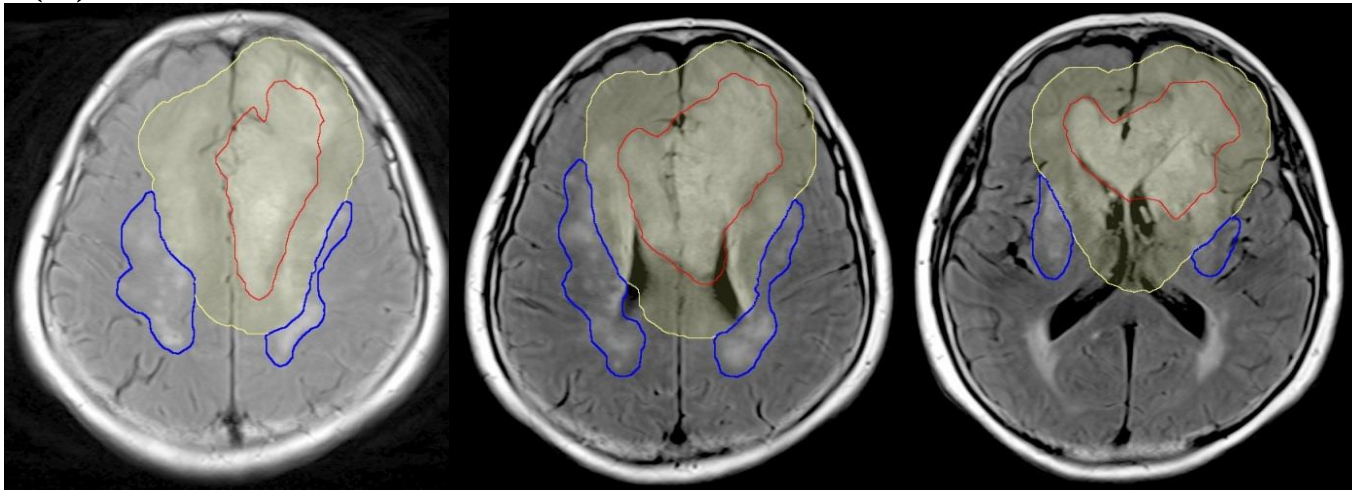


### (a) T1-GdE



### (b) T2-FLAIR



Supplementary 3 Case 5. (a) Post-biopsy gadolinium enhanced T1-weighted (T1-GdE) images. (b)  $GTV_{STAPLE}$  (red) and  $CTV_{STAPLE}$  (yellow) on T2-FLAIR images (areas of T2-high signal intensity uncovered by the  $CTV_{STAPLE}$  shown in blue lines).