

(a) Robustness on pCT

(b) Robustness on cCTs

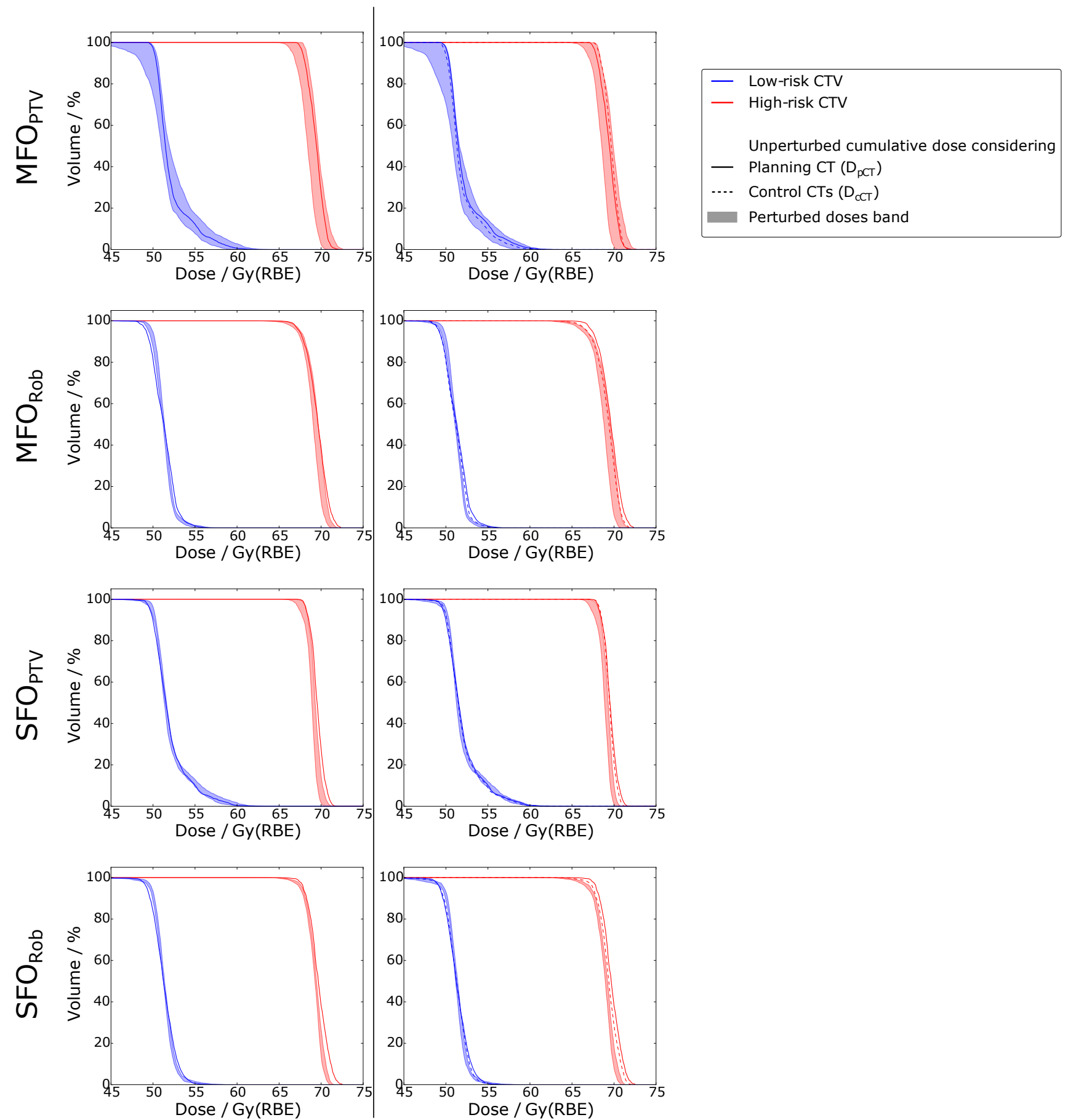


Figure S1. DVHs from the four planning approaches MFO<sub>PTV</sub>, MFO<sub>Rob</sub>, SFO<sub>PTV</sub> and SFO<sub>Rob</sub> (top to bottom) for the low- (blue) and high-risk CTV (red) of an example patient. The DVH from the nominal plan (solid line, shown in all plots for orientation) is complemented by the DVH bands from the 30 perturbed cumulative doses for robustness analysis considering the initial plan and (a) the nominal anatomy ( $\bar{D}_{pCT}$ ), and (b) anatomy in the control CTs ( $\bar{D}_{cCT}$ ).