

Supplementary material

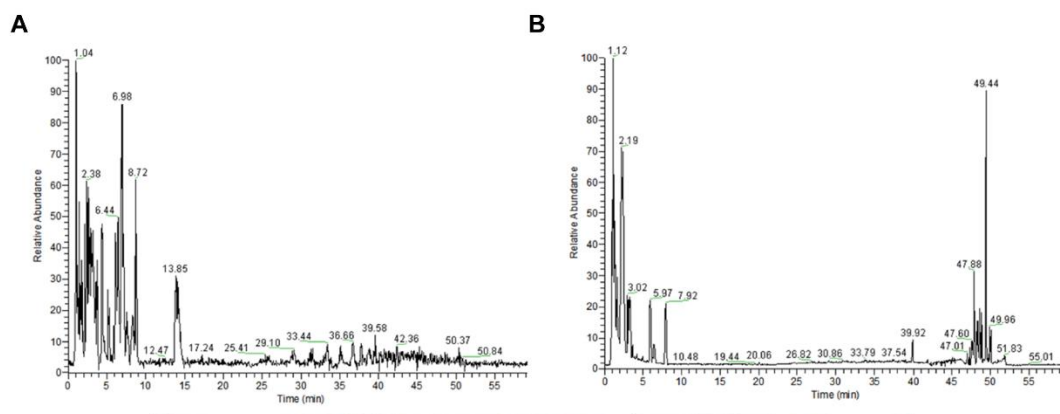


Figure S1. Quality control data of *Cordyceps sinensis* powder (Bailing Capsule). (A- B) TIC diagram of the *Cordyceps sinensis* powder in Bailing Capsule UHPLC-LTQ-Orbitrap-MS, and (A) for positive mode, (B) for negative mode.

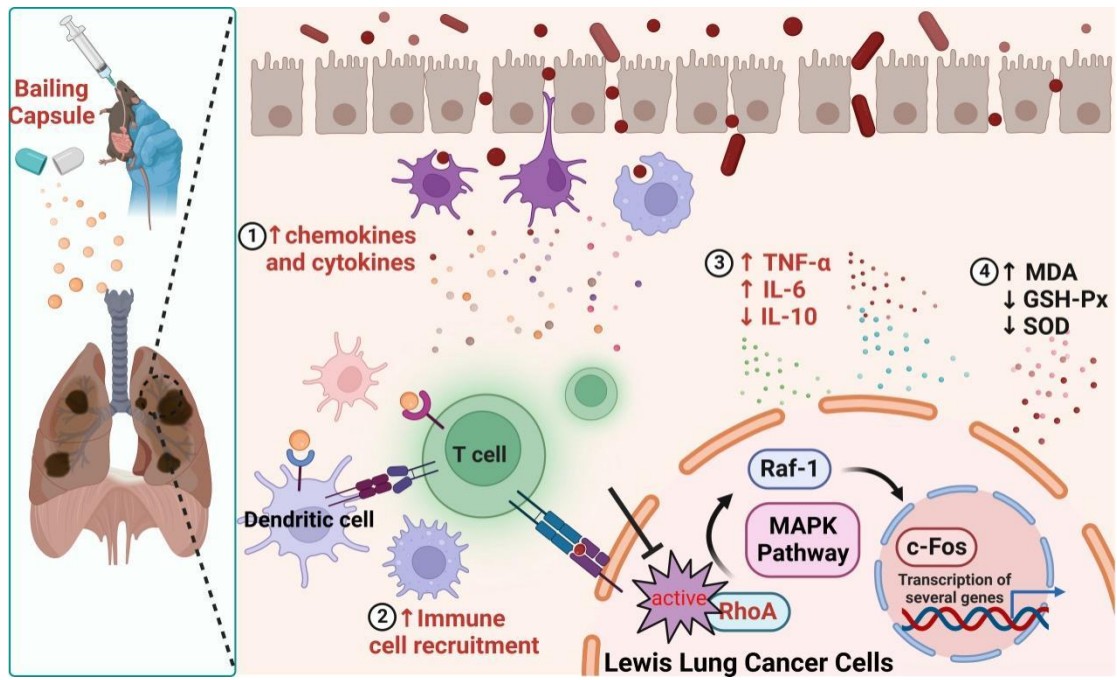


Figure S2 *Cordyceps sinensis* likely exerted a protective effect against NSCLC by suppressing the RhoA gene, then recruiting immune cells, enhancing immune function, and inhibiting lung cancer via the MAPK pathway