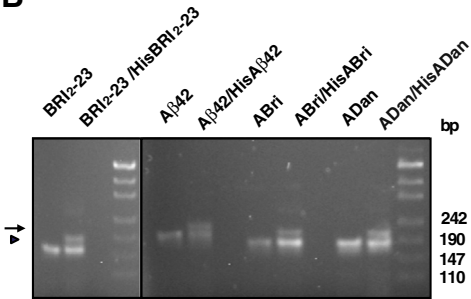


A

1- *nec* -DAEFRHDSGYEVHHQKLVFFAEDVGSNKGAIIGLMVGGVVIA ($A\beta$ 42) 5- *nec*-(H)₆- $A\beta$ 42
 2- *nec* -EASNCFAIRHFENKAVETLIC(S) (BRI2-23) 6- *nec*-(H)₆-BRI2-23
 3- *nec* -EASNCFAIRHFENKAVETLIC(S)RTVKKNIIEEN (ABri) 7- *nec*-(H)₆-ABri
 4- *nec* -EASNCFAIRHFENKAVETLIC(S)FNLFNSQEKHY (ADan) 8- *nec*-(H)₆-ADan

B**C**