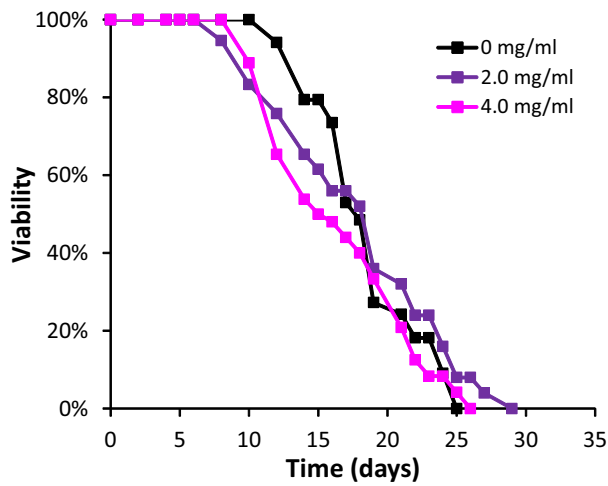
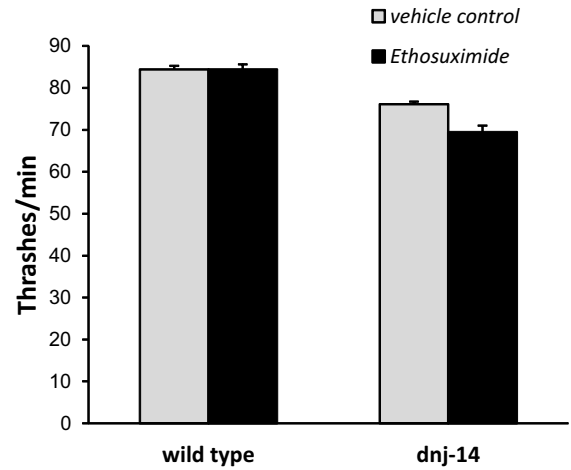
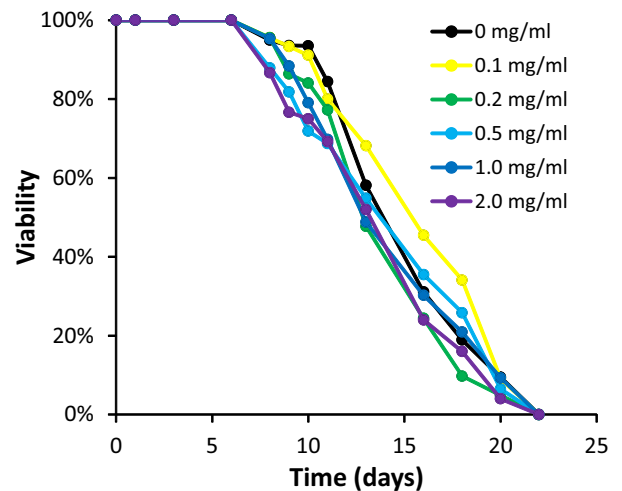
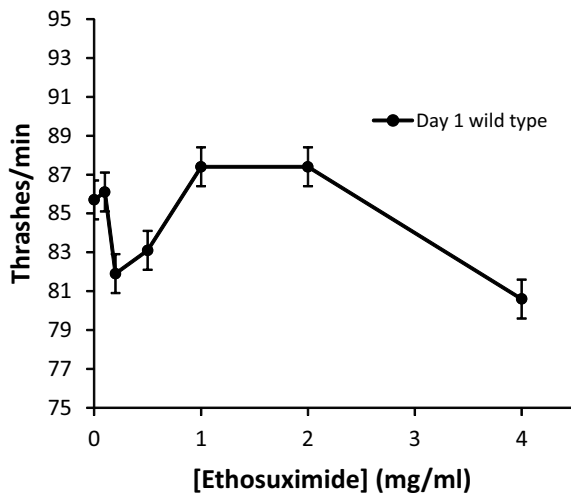


a**b****c**

C. elegans strains. (A) Viability of age-synchronised Bristol N2 wild type control animals grown in the presence of the indicated concentrations of ethosuximide was determined ($n = 50-55$ worms for each concentration). (B, C) Thrashing in solution was measured in the wild type strain CZ1200 grown in the presence of varying concentrations of ethosuximide (B) and in wild type N2 and *dnj-14(tm3223)* worms grown in the presence of 1 mg/ml ethosuximide (C). Data are shown as mean \pm SEM ($n = 20-30$ worms per concentration). (D) Viability of age-synchronised CZ1200 control animals grown in the presence of the indicated concentrations of ethosuximide was determined ($n = 50-102$ worms for each drug concentration).